

Product datasheet for **MG209568**

Smpd1 (NM_011421) Mouse Tagged ORF Clone

Product data:

Product Type:	Expression Plasmids
Product Name:	Smpd1 (NM_011421) Mouse Tagged ORF Clone
Tag:	TurboGFP
Symbol:	Smpd1
Synonyms:	A-SMase; ASM; aSMase; Zn-SMase
Mammalian Cell Selection:	Neomycin
Vector:	pCMV6-AC-GFP (PS100010)
E. coli Selection:	Ampicillin (100 ug/mL)



[View online »](#)

ORF Nucleotide Sequence:

>MG209568 representing NM_011421
 Red=Cloning site Blue=ORF Green=Tags(s)

TTTTGTAATACGACTCACTATAGGGCGGCCGGGAATTCGTCGACTGGATCCGGTACCGAGGAGATCTGCC
 GCCGCGATCGCC

ATGCCCCACCACAGAGCATCATCCGGCCAGGACCCTCAGAGCCGGCTGGGAGCAGAGACTGGAGAGGT
 CCTACCAGCACCAGAGTGGGACTCCTTTGGATGGGGCTGGGCTTGGCGCTGGTTCTGGCTCTGTTTGA
 CTCACCGTTCTTTGGGTTCTGCCAGAGCTTATCCTCTTCTTGAAGGCCATTCTGTCAAATTCAGT
 GCCATAGCGCCGCGCTCCAGAGTGCCTTTGGGTGGCAGAACCTCACTTGCCCGCCTGCAAAGTCTTAT
 TCACTGCTCTCAACCATGGGCTGAAGAAGGAGCCCAATGTGGCACGGGTAGGCTCTGTGGCCATCAAGAT
 ATGCAAGATGCTGAACATAGCACCCTAGATGTGTGCCAGTCAAGCCGTCATCTCTTTGAGGACGATGTG
 GTGGAGGTGTGGACACGTTCACTTCTGAGCCCATCAGAGGCTTGTGGCTTGTCTTGGGCTCCTCTGTG
 GACTGGGACATCTTTTCGACTTGAACATCTCTTTGCCATCAGTGCCGAAGCCACCCCAAAGCCACC
 GAGCCACCGCCCGGTGCCCTGTAGCCGTGCTCTTCTTACTGATCTACTGGGACCATGAG
 TACCTGGAGGGCAGACCCCTTACTGTGAGATCCACTTTGCTGCCGCGGGGGTCCGGATGGCCACCCA
 ACTCCCAGAAGGGGGCTGGGTTCTGGGGCGAGTACAGCAAGTGTGACCTGCCCTTGCAGACGCTAGAAA
 CCTGTTGAAAGGACTGGGCCCTGCCGCCCTTTTGAATGGTGTACTGGACGGGAGATATCCCTGCCCAT
 GATGTCTGGCAACAGTCTCGCAAGATCAGCTGAGGGCCCTGACCACCATCACAGACCTCGTGAGGAAGT
 TCTTGGGCCCAGTGCCAGTGTACCCTGTGTGGCAACCATGAGAGCACTCCTGTCAATGGCTTCCCTCC
 TCCCTTCAATAAGGGAACCAATCTTACAATGGCTCTATGAAGCCATGGCAAGGATGGGAACCTGG
 TTACCAGCTGATGCCCTCACACCCTAAGAATGGGGCTTCTATGCCCTACCCACGCCCTGGCCTCC
 GCCTCATCTCTCAATATGAATTTTTGTCCCGTGAGAATTTGGCTTTGATCAACTCCACAGATCC
 TGCTGGACAACCTCAGTGGCTGGTGGAGAGCTTCAAGGCTGCTGAGAATCGAGGAGACAAAGTGCAATA
 ATTGGCCACATCCCTCCAGGACATTGTCTTAAGAGCTGGAGCTGGAATTATTACAAAATCATAGCCAGT
 ATGAAAACACTCTGGCCGTCAGTCTTTGGCCACACTCACGTGGATGAGTTTGGATCTTCTATGATGA
 GGAAACTCTGAGCCGACCACTAGCTGTAGCCTTCTGGCGCCAGTGTACAACCTTTATCAACCTTAAC
 CCTGGCTACCGAGTTTACCAAATAGATGGAACTACCCCGAAGCTCTCATGTGGTCTGGACCACGAGA
 CCTACATCTTGAATCTGACCCAGGCCAACGCAGCAGGAGGCACACCAAGCTGGAAGCGCCTACAGGGC
 TCGAGAAACCTATGGACTTCCAGATGCGATGCCTGCCCTCTGGCACAACCTGGTCTACCGCATGAGGGAT
 GATGAGCAACTTCCAGACCTTCTGGTTCTCTACCATAAGGGCCACCCACCTCAGAGCCCTGCGGCA
 CACCCTGCCGCCCTGGCCACTCTGTGTGCCAGCTCTCAGCCGAGCAGACAGCCCTGCTTTGTGTGCCA
 CTTGATGCCCAATGGGAGCCTCCAGATGCTAATAGGTTGTGGTACGCCCCCTGTTGTGC

ACGCGTACGCGGCCGCTCGAG - GFP Tag - GTTTAA

Protein Sequence:

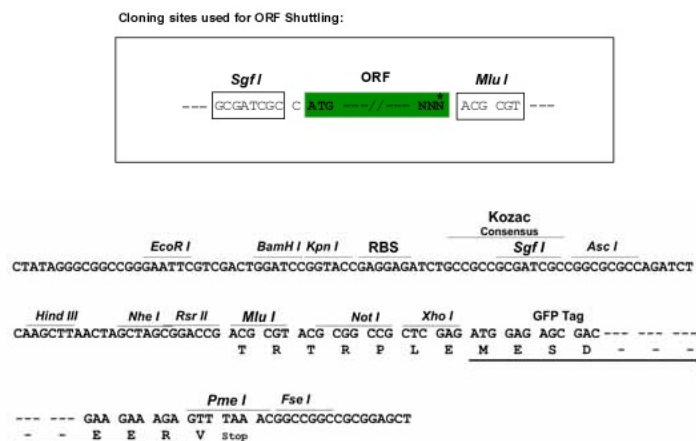
>MG209568 representing NM_011421
 Red=Cloning site Green=Tags(s)

MPHHRASSGDHLRAGWEQRLERSLPAPRVGLLWMGLGLALVLAFLDSTVLWVPARAYPLPSEGHVSVKFS
 AIAPPLQSAFGWQNLTPACKVLFALNHGLKKEPNVARVGSVAIKICKMLNIAPLDVCSAVHLFEDDV
 VEVWTRSVLSPSEACGLLLGSSCGHWDIFSTWNIISLPSVPKPPKPPSPPAGAPVSRVFLDHLHWDHE
 YLEGTDPYCADPLCCRRGSGWPPNSQKAGFWGEYSKCDLPLRLETSLKGLGPAGPFEMVYWTGDIPAH
 DVWQSRQDQLRALTTITDLVRKFLGPVPVYPAVGNHSTPVNGFPPPF IKGNQSSQWL YEAMAKAWEPW
 LPADALHLRIGGFYALTPRPGLRLISLNMNFC SRENFWLLINSTDPAGLQWLVEELQAENRDKVHI
 IGHIPPGHCLKSWSNYKIIARYENTLAGQFFGHTHVDEFEIFYDEETLSRPLAVAFAPSATTFINLN
 PGYRVYQIDGNYPGSSHVLDHETYILNLTQANAAGGTPSWKRLYRARETYGLPDAMPASWHNLVYRMRD
 DEQLFQTFWFLYHKGHPPEPCGTPCRLATLCAQLSARADSPALCRHLMPNGSLPDANRLWSRPLLC

TRTRPLE - GFP Tag - V

Restriction Sites:

Sgfl-MluI

Cloning Scheme:


ACCN: NM_011421

ORF Size: 1881 bp

OTI Disclaimer: The molecular sequence of this clone aligns with the gene accession number as a point of reference only. However, individual transcript sequences of the same gene can differ through naturally occurring variations (e.g. polymorphisms), each with its own valid existence. This clone is substantially in agreement with the reference, but a complete review of all prevailing variants is recommended prior to use. [More info](#)

OTI Annotation: This clone was engineered to express the complete ORF with an expression tag. Expression varies depending on the nature of the gene.

Components: The ORF clone is ion-exchange column purified and shipped in a 2D barcoded Matrix tube containing 10ug of transfection-ready, dried plasmid DNA (reconstitute with 100 ul of water).

Reconstitution Method:

1. Centrifuge at 5,000xg for 5min.
2. Carefully open the tube and add 100ul of sterile water to dissolve the DNA.
3. Close the tube and incubate for 10 minutes at room temperature.
4. Briefly vortex the tube and then do a quick spin (less than 5000xg) to concentrate the liquid at the bottom.
5. Store the suspended plasmid at -20°C. The DNA is stable for at least one year from date of shipping when stored at -20°C.

RefSeq: [NM_011421.2](#), [NP_035551.1](#)

RefSeq Size: 2430 bp

RefSeq ORF: 1884 bp

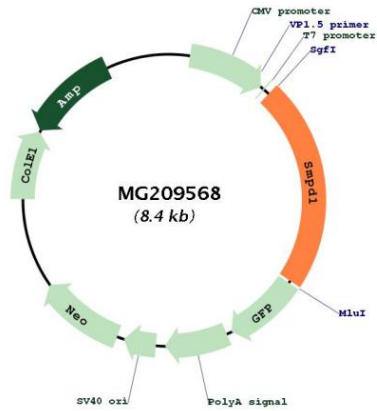
Locus ID: 20597

UniProt ID: [Q04519](#)

Cytogenetics: 7 55.9 cM

Gene Summary: Converts sphingomyelin to ceramide. Also has phospholipase C activities toward 1,2-diacylglycerolphosphocholine and 1,2-diacylglycerolphosphoglycerol.[UniProtKB/Swiss-Prot Function]

Product images:



Circular map for MG209568