

Product datasheet for **MG209551**

Trim25 (BC006908) Mouse Tagged ORF Clone

Product data:

Product Type:	Expression Plasmids
Product Name:	Trim25 (BC006908) Mouse Tagged ORF Clone
Tag:	TurboGFP
Symbol:	Trim25
Synonyms:	AA960166; AL022677; EFP; Zfp147
Mammalian Cell Selection:	Neomycin
Vector:	pCMV6-AC-GFP (PS100010)
E. coli Selection:	Ampicillin (100 ug/mL)



[View online »](#)

ORF Nucleotide Sequence:

>MG209551 representing BC006908
 Red=Cloning site Blue=ORF Green=Tags(s)

TTTTGTAATACGACTCACTATAGGGCGGCCGGGAATTCGTCGACTGGATCCGGTACCGAGGAGATCTGCC
 GCC**CGGATCGCC**

ATGGCGGAGCTGAATCCTCTGGCCGAGGAGCTGTCTGCTCCGTGCTGCTGGAGCTTTCAGGAACCTG
 TACCACCCCGTGCGCCACAACCTCTGCATGTATGCCTGGATGAGACGTGGGTCTCCAGGGCCCGCC
 GTACCGGTGCCCGCAGTGTGCGAAAGTGTACCAGGTGCGCCCGCAGCTGCAAAAGAACACGGTAATGTGC
 GCGGTGGTGGAGCAGTTCTGACAGGCTGAGCAGGCGCGGACCCCGGTGAACGACTGGACGCCCTGCC
 GCTCCTCCGCTTCCAGCGCAGCCACCCAGGTGGCCTGCGACCACTGCCTGACGGAGATCGCAGTGAAGAC
 GTGCTCGTGTGCATGGCTCTTTCTGCCAGGAGCACTTGAGGCCTCACTTCGACAGTCCGGCTTCCAG
 GATCACCCCTGCAGTCGCCATCCGTGACCTTCTGCGCCGAAATGTACCCAGCACAACCGCTTCGGG
 AATTGTTTTGTCGGAGCATGGCGAGTGCATCTGCCATATCTGCTTGGTAGAGCACAAGACTGCTCCCC
 TACGACCTAAGTCAAGCCAGCGCCGACCTGGAGTACAAACTGAGGAATAAACTCACTATCATGCACAGC
 CACATCAATGGGGCAACCAAGCATTGGAGGATGTGAGATCCAAGCAACAGTGTGTGCAGGATTCTATGA
 AGAGGAAGATGGAACAGCTGAGACAGGAGTATATGAAATGAAGGCTGTCATCGACGCAGCAGAGACCAG
 CTCCTTGGCAGGTTGAAGGAGGAGGAGAAGAGAGTCTACGAAAATTCGACACCATCTACCAGGTTCTC
 GTCAAGAAGAAGAGTGAAGTGCAGAACTGAAGGCAGAGGTTGAGCTCATTATGGACAAAGGGGATGAGT
 TTGAGTTTCTGGAGAAAGCTGCAAAATGCAAGGAGAGTCAACAAAACAGTCTACATCCCTAAGATAGA
 TCTGGATCATGATTTGATAATGGAACTACCAAGGGCGCGGACCTCAAGAGTGAAGTGAAGCACTCC
 ATTAAGAAGCTACAGAAGAAGTCTGAGGAGCACAATGGCTCAGGTAACAAGGGAGACCAGACACAGTCCA
 CTTTTAAACCCGTACAACCTTGAAGAAGACCACTTCTGTTGCTCCCGGCTCTCCCTCCCCTTCCACC
 TAACAAGTTGCCACCTTTGGAGCTCCTGGCCAATCACTGGATTCAAAGCAACTTCCCCTGATGCCGCA
 CCCAAAGCCAGTCTGCACAGCCAGACTCTGTAGGAGTCAAGGCTAAGGTGCTAGAAAATCTTAAACCA
 AGTCCAGAACGGAGCTTCTGGAGTATTTCTGAAAGTCACTTTCGACTACAATACCGCCACAACAAAGT
 GTCTCTGTCAAACAAGTACACCACCGCCTCTGTGTCTGATGGGCTCCAGCACTACCGGTCCCATCCCAG
 AGGTTACCTACTGCTCTCAGGTCTGGGGTGCCTGCTACAAGAACGGCATTCACTACTGGGAGGTGG
 AACTACAGAAGAACAACCTTCTGCGGCTAGGCATCTGCTACGGCAGCATGGAACGGCAGGGCCCGAGAG
 CCGGCTGGGCCGCAACCCCAACTCATGGTGTGTGGAGTGGTTCAATAACAAGATCTCCGCTGGCACAAC
 AACGTGGAGAAGACTCTGCCCTCCCAAGGCCACTCGAGTCGGGCTGCTCAACTGTGACCACGGCT
 TCGTCATTTCTTTGCGGTACCGAAAAGGTGCACCTGATGTACAAGTCAAGGTGGACTTACCGAAGC
 TCTGTACCCAGCCTTCTGGGTGTTCTCGGCCGGTACCACCTCTCTATCTGCTCCAAA

ACGCGTACGCGGCCGCTCGAG – GFP Tag – GTTTAA

Protein Sequence:

>MG209551 representing BC006908
 Red=Cloning site Green=Tags(s)

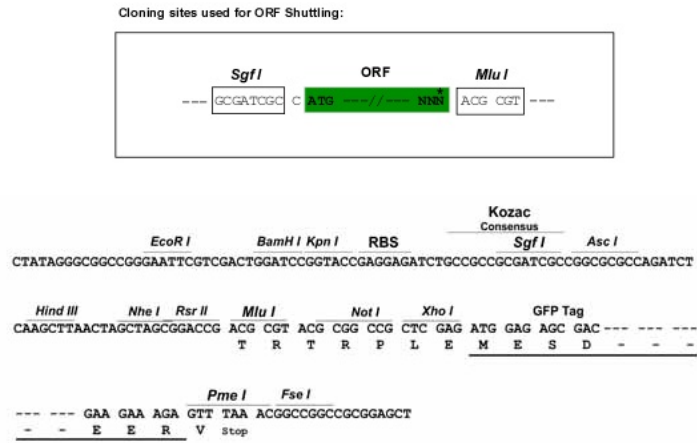
MAELNPLAEELSCSVCLELKFEPVTPCGHNFMSCLDETWVVQGPYRCPQCRKVVYQVRPQLQKNTVMC
 AVVEQFLQAEQARTPVNDWTPPARSSASSAATQVACDHCLTEIAVKTCLVCMASFQCEHLRPHFDSAPAFQ
 DHPLQSPIRDLRLRRKCTQHNRLRELFCEHGEICHIICLVEHKTCSPPTLSQASADLEYKLRNKLTIMHS
 HINGATKALEDVRSKQQCVDQSMKRKMEQLRQYEMEMKAVIDAAETSSLRRLKEEEKRVYKFDTIYQVL
 VKKKSEMQLKAEVELIMDKGDEFEFLEKAAKLQGESTKPVYIPKIDLDHDLIMGIYQGAADLKSELKHS
 IKKLQKKSEEHNGSGNKGDQTSFKPVQPSKKTIPVAPGSPSHFSPNKLPTFGAPGQSLDSKATSPDAA
 PKASAAQPDQSVGKAKVLENFLTKSRTELLEYFVKVIFDYNTAHNKVSLSNKYTTASVSDGLQHYRSHQP
 RFTYCSQVGLHCYKNGIHYWEVELQKNNFCGVGICYGSMERQGPESRLGRPNPNSWCVEWFNKKISAWHN
 NVEKTLPSKATRVGLLNCDHGFVIFFAVTEKVLHMYKFKVDFTEALYPAFWVFSAGTTLSICSK

TRTRPLE – GFP Tag – V

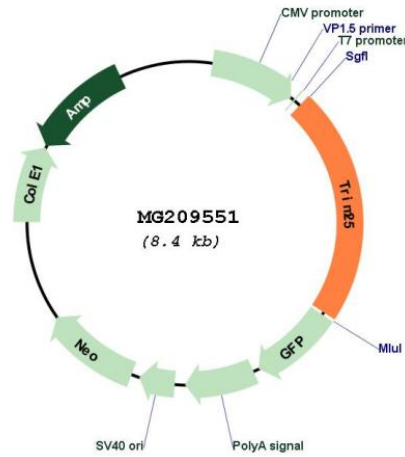
Restriction Sites:

Sgfl-MluI

Cloning Scheme:



Plasmid Map:



ACCN: BC006908
 ORF Size: 1880 bp

OTI Disclaimer:	The molecular sequence of this clone aligns with the gene accession number as a point of reference only. However, individual transcript sequences of the same gene can differ through naturally occurring variations (e.g. polymorphisms), each with its own valid existence. This clone is substantially in agreement with the reference, but a complete review of all prevailing variants is recommended prior to use. More info
OTI Annotation:	This clone was engineered to express the complete ORF with an expression tag. Expression varies depending on the nature of the gene.
Components:	The ORF clone is ion-exchange column purified and shipped in a 2D barcoded Matrix tube containing 10ug of transfection-ready, dried plasmid DNA (reconstitute with 100 ul of water).
Reconstitution Method:	<ol style="list-style-type: none">1. Centrifuge at 5,000xg for 5min.2. Carefully open the tube and add 100ul of sterile water to dissolve the DNA.3. Close the tube and incubate for 10 minutes at room temperature.4. Briefly vortex the tube and then do a quick spin (less than 5000xg) to concentrate the liquid at the bottom.5. Store the suspended plasmid at -20°C. The DNA is stable for at least one year from date of shipping when stored at -20°C.
RefSeq:	BC006908 , AAH06908
RefSeq Size:	2602 bp
RefSeq ORF:	1880 bp
Locus ID:	217069
Cytogenetics:	11 C
Gene Summary:	Functions as a ubiquitin E3 ligase and as an ISG15 E3 ligase. Involved in innate immune defense against viruses by mediating ubiquitination of DDX58 and IFIH1. Mediates 'Lys-63'-linked polyubiquitination of the DDX58 N-terminal CARD-like region which is crucial for triggering the cytosolic signal transduction that leads to the production of interferons in response to viral infection. Mediates 'Lys-63'-linked polyubiquitination of IFIH1. Promotes ISGylation of 14-3-3 sigma (SFN), an adapter protein implicated in the regulation of a large spectrum signaling pathway. Mediates estrogen action in various target organs. Mediates the ubiquitination and subsequent proteasomal degradation of ZFX3.[UniProtKB/Swiss-Prot Function]