

Product datasheet for **MG209547**

Map3k3 (NM_011947) Mouse Tagged ORF Clone

Product data:

Product Type:	Expression Plasmids
Product Name:	Map3k3 (NM_011947) Mouse Tagged ORF Clone
Tag:	TurboGFP
Symbol:	Map3k3
Synonyms:	AW548911; MAPKKK3; Mekk3; mKIAA4031
Mammalian Cell Selection:	Neomycin
Vector:	pCMV6-AC-GFP (PS100010)
E. coli Selection:	Ampicillin (100 ug/mL)



[View online »](#)

ORF Nucleotide Sequence:

>MG209547 representing NM_011947
 Red=Cloning site Blue=ORF Green=Tags(s)

TTTTGTAATACGACTCACTATAGGGCGGCCGGAATTCGTCGACTGGATCCGGTACCGAGGAGATCTGCC
 GCC**CGGATCGCC**

ATGGATGAACAAGAGGCATTAGACTCGATCATGAAGACCTGGTGCCCTCCAGATGAGCCGACGAACCC
 GGTTGTCTGGATATGAGACCATGAAGAATAAGGACACAGGTCACCCAAACAGGCAGAGTGACGTCAGAAT
 CAAGTTTGAACACAATGGGGAGAGACGAATTATAGCATTAGCCGGCCTGTGAGATACGAAGATGTGGAG
 CACAAGGTGACAACAGTCTTTGGGCAGCCTCTTGATTTGCATTATATGAATAATGAGCTCTCCATCTGT
 TGAAAAACCAAGATGATCTCGATAAAGCCATTGACATTTGGATAGAAGCTCAAGTATGAAAAGCCTTAG
 GATACTACTGTTATCCCAAGACAGAAACCATACTAGTTCCTCTCCCACTCTGGAGTGTCCAGGCAGGTT
 CGGATCAAGCCTCCAGTCTGCAGGGGATATAAATACCATCTACCAAGCTCCTGAGCCAGAAGCAGGC
 ACCTGTCTGTGAGTCCCAGAACCTGGCCGAAGCTCTCCTCCCGGGATATGTACCTGAGCGACAACA
 GCACATTGCCCGCAAGGATCCTATACGAGCATCAACAGCGAAGGTGAATTCATCCAGAGACCAGCGAA
 CAGTGTATGCTAGATCCCTCAGCAGTGCCGAAAATTCCTTGTCAGGAAGCTGCCAATCCTTGGACAGGT
 CAGCAGACAGCCATCCTTCAGGAAATCACAATGTCCCGAGCCCGGAGCTTCCAGACAACAGAAAGGA
 ATGCTCAGATCGGGAGACCCAGCTCTATGATAAAGGTGTCAAAGGTGGAACCTATCCAGGCGCTACCAT
 GTGTCTGTGCATCAAAAGACTACAATGATGGCAGAAGAACATTTCCCGAATACGACGGCATCAAGGCA
 ACCTATCACTCTGGTGCCCTCAAGTCGCTCCTTGAGCACAATGGCGAGAACATGGGTGTAGCTGTGCA
 ATACCTGGACCCCGTGGGCGCCTACGGAGTGCAGACAGTGAGAATGCCCTCACTGTGCAGGAAAGGAAT
 GTGCCAACCAAACTCCTAGTGTCCCATCAATTGGCGTCGGGGGAAGCTCCTGGGTCAAGTGCCTTCG
 GCAGGGTCACTTGTGCTATGATGTGGACACAGGACGTGAACCTGCTTCTAAGCAGGTCCAGTTTGACCC
 AGATAGTCTGAGACAAGCAAGGAGGTGAGTGTCTGGAGTGTGAGATCCAGTTGCTGAAGAACCTGCAG
 CATGAGCGCATTGTGCAGTACTACGGCTGCCTGCGGGACCGTGCTGAGAAGATCCTCACCATCTTTATGG
 AGTATATGCCAGGGGGCTCTGTAAAAGACCAGTTGAAGGCCTACGGAGCTCTGACAGAGAGTGTGACCCG
 CAAGTACACCCGGCAGATTCTGGAGGGCATGTCATACCTGCACAGCAACATGATTGTGCATCGGGACATC
 AAGGGAGCCAATATCCTCCGAGACTCAGCTGGGAATGTGAAGCTTGGGGATTTGGGGCCAGCAAACGCC
 TACAGACCATCTGCATGTGAGGACAGGCATTCGCTCTGCTACTGGCACACCCTACTGGATGAGTCTGGA
 AGTCAATCAGTGGCGAGGGCTATGGAAGAAAGGCAGACGTGTGGAGCCTGGGCTGTACTGTGGTGAATG
 CTGACAGAGAAACCACCTTGGGCAGAGTATGAAGCTATGGCTGCCATTTCAAGATTGCCACCCAGCCTA
 CCAATCCTCAGCTGCCCTCTACATCTCAGAACACGGCAGGGACTTCTGAGGCGCATATTTGTGGAAGC
 TCGTCAGAGACCCCTCAGCTGAGGAGCTGCTCACACACCCTTTGCACAGCTAGTGTAC

ACGCGTACGCGGCCGCTCGAG – GFP Tag – GTTTAA

Protein Sequence:

>MG209547 representing NM_011947
 Red=Cloning site Green=Tags(s)

MDEQEALDSIMKDLVALQMSRRRLSGYETMKNKDTGHPNRQSDVRIKFEHNGERRIIAFSRPVRYEDVE
 HKVTVTFGQPLDLHYMNNELSILLKNQDDLKAIDILDRSSMKSRLRILLLSQDRNHTSSSPHSGVSRQV
 RIKPSQSAGDINTIYQAPEPRSRHLSVSSQNPGRSSPPPGYVPERQQHIARQGSYTSINSEGEFIPETSE
 QCMLDPLSSAENSLSGSCQSLDRSADSPSFRKSQMSRARSFPDNRKECSRETQLYDKGVKGGTYPRRYH
 VSVHHKDYNDGRRTFPRIRRHQGNLFTLVPSSRSLSTNGENMGVAVQYLDPRGRLRSADSENALTVQERN
 VPTKSPSAPINWRRGKLLGQAFGRVYLCYDVTGRELASKQVQFDPDSPETSKEVSALECEIQLLKNLQ
 HERIVQYYGCLRDRAEKILTIIFMEYMPGGSVKDQLKAYGALTESVTRKYTRQILEGMSYLHSNMIVHRDI
 KGANILRDSAGNVKLGDFGASKRLQITCMSGTGIRSVTGTPTYWMSPEVISGEGYGRKADVWSLGGCTVVM
 LTEKPPWAEYEAMAAIFKIATQPTNPQLPSHISEHGRDFLRRIFVEARQRPSAEELLTHHFAQLVY

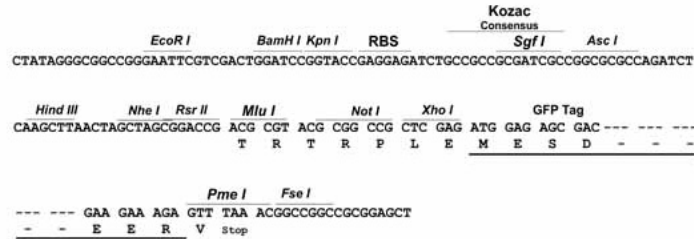
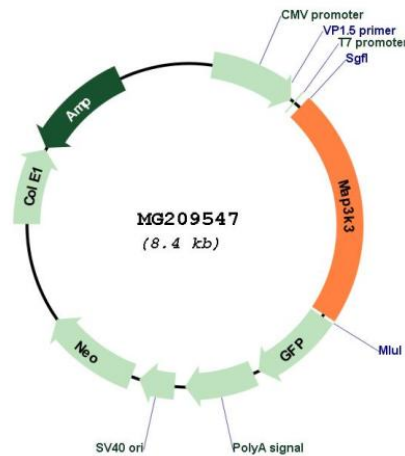
TRTRPLE – GFP Tag – V

Restriction Sites:

SgfI-MluI

Cloning Scheme:

Cloning sites used for ORF Shutting:


Plasmid Map:


ACCN: NM_011947
 ORF Size: 1878 bp

OTI Disclaimer:	The molecular sequence of this clone aligns with the gene accession number as a point of reference only. However, individual transcript sequences of the same gene can differ through naturally occurring variations (e.g. polymorphisms), each with its own valid existence. This clone is substantially in agreement with the reference, but a complete review of all prevailing variants is recommended prior to use. More info
OTI Annotation:	This clone was engineered to express the complete ORF with an expression tag. Expression varies depending on the nature of the gene.
Components:	The ORF clone is ion-exchange column purified and shipped in a 2D barcoded Matrix tube containing 10ug of transfection-ready, dried plasmid DNA (reconstitute with 100 ul of water).
Reconstitution Method:	<ol style="list-style-type: none">1. Centrifuge at 5,000xg for 5min.2. Carefully open the tube and add 100ul of sterile water to dissolve the DNA.3. Close the tube and incubate for 10 minutes at room temperature.4. Briefly vortex the tube and then do a quick spin (less than 5000xg) to concentrate the liquid at the bottom.5. Store the suspended plasmid at -20°C. The DNA is stable for at least one year from date of shipping when stored at -20°C.
RefSeq:	NM_011947.4
RefSeq Size:	3166 bp
RefSeq ORF:	1881 bp
Locus ID:	26406
UniProt ID:	Q61084
Cytogenetics:	11 E1
Gene Summary:	Component of a protein kinase signal transduction cascade. Mediates activation of the NF-kappa-B, AP1 and DDIT3 transcriptional regulators.[UniProtKB/Swiss-Prot Function]