

Product datasheet for **MG209539**

Msln (NM_018857) Mouse Tagged ORF Clone

Product data:

Product Type:	Expression Plasmids
Product Name:	Msln (NM_018857) Mouse Tagged ORF Clone
Tag:	TurboGFP
Symbol:	Msln
Synonyms:	MPF
Mammalian Cell Selection:	Neomycin
Vector:	pCMV6-AC-GFP (PS100010)
E. coli Selection:	Ampicillin (100 ug/mL)



[View online »](#)

ORF Nucleotide Sequence:

>MG209539 representing NM_018857
 Red=Cloning site Blue=ORF Green=Tags(s)

TTTTGTAATACGACTCACTATAGGGCGGCCGGAATTCGTCGACTGGATCCGGTACCGAGGAGATCTGCC
 GCC**CGGATCGCC**

ATGGCCTTGCCAACAGCTCGACCCTGCTGGGGTCTGTGGAAGTCCCATCTGCAGCCGAAGCTTCTCTAC
 TGCTTCTCCTTAGTCTTGGGTGGATACACGCTCTGCAGACCCAGACTACAAAGACAAGCCAGGAGGCCAC
 ACTCCTCCATGCTGTGAACGGTGCCTGACTTTGCCAGTCTCCACACAGGCCTCTTTCTTGGCCTCACA
 TGTGAGGAGGTATCTGACCTGAGCATGGAACAAGCCAAGGGGCTGGCTATGGCTGTAAGACAGAAGAACA
 TTACACTCCGGGGACATCAGCTGCGTTGTCTGGCACGTCGCCCTTCTAGGCACCTCACCGACGAGGAACT
 GAATGCTCTTCCACTGGACCTGCTGCTTCTCAACCCAGCCATGTTTCCAGGGCAACAGGCTTGTGCC
 CACTTCTTCTCCCTCATCTCTAAAGCCAATGTGGATGACTCCCACGGAGGTCTCTGGAGCGCCAGAGGC
 TGCTGATGGAGGCTCTGAAGTCCAGGGCGTGTATGGATTTCAAGTGAGTGAGGCAGATGTGCGGGCTCT
 CGGAGGCTTGGCCTGTGACCTGCCTGGGAAATTTGTGGCCAGATCTTCCGAAGTTCTCTCCCTGGCTG
 GCAGGATGCCAAGGACCCCTGGACCAGAGCCAGGAAAAGGCAGTCAGGGAGGTTCTGAGGAGTGGAGAA
 CCCAATATGGCCCCCATCGAAGTGGTCACTCCACCCTGGATGCCCTGCAGAGCTTGGTAGCAGTGT
 GGATGAGTCCATCGTCCAGAGCATCCCCAAGGATGTCAAAGCTGAATGGCTGCAACACATCTCCAGAGAC
 CCCTCCAGGCTGGGGTCTAAGCTGACCGTCATACACCAAGGTTCCGACGGGATGCAGAACAGAAAGCCT
 GCCCTCCAGGGAAGGAGCCCTACAAGGTGGATGAAGACCTCATCTTACCAGAATTGGGAGCTGGAGGC
 TTGTGTAGATGGACCATGCTGGCCAGACAAATGGACCTTGTGAACGAGATTCCCTTACCTATGAGCAG
 CTCAGTATCTTTAAGCACAACCTGGACAAGACCTACCCACAAGGCTATCCTGAGTCCCTGATCCAGCAGC
 TGGGCTACTTCTCAGATATGTTAGCCCTGAAGACATCCACCAGTGAATGTGACCTCACCAGACACAGT
 GAAAACCTGCTCAAAGTCAGCAAAGGACAAGGATGAATGCTCAGGCGATTGCCTTGGTCGCCTGCTAT
 CTTCCGGGAGGAGGCCAGCTGGACGAGGATATGGTAAAAGCCCTGGGCGACATCCCGTTAAGCTATCTAT
 GTGACTTCAGCCCCAGGATCTGCACTCGGTACCTCCAGTGTGATGTGGCTGGTTGGGCCCAAGACCT
 GGACAAGTGCAGCCAGAGGCATCTGGGTCTCCTTACCAGAAGGCCTGCTCAGCCTTCCAGAATGTGAGC
 GGCCTAGAATACTTTGAGAAAATCAAGACATCTGGGTGGGGCTCCGTGAAGGACCTGCGGGCCCTCA
 GCCAGCACAATGTGAGCATGGACATAGCCACTTCAAGAGGCTGCAGGTGGATTCCCTGGTGGGGCTGAG
 TGTGGCTGAGGTACAGAACTTCTGGGGCCAAACATTGTGGACCTGAAGACCGAGGAGGATAAAAGCCCT
 GTCCTGACTGGCTGTTCCGGCAGCATCAGAAAGACCTAGACAGGCTGGGTTTGGGACTCAGGGTGGCA
 TCCCAATGGCTACCTGGTCTGGACTTCAATGTCCGAGAGGCCTTCTCCAGCAGAGCCTCACTCCTTGG
 GCCAGGATTTGTATTAATATGGATTCCAGCTCTGCTCCAGCTTTAAGGCTGAGC

ACGCGTACGCGGCCGCTCGAG - GFP Tag - GTTTAA

Protein Sequence:

>MG209539 representing NM_018857
 Red=Cloning site Green=Tags(s)

MALPTARPLLGSCGSPICSRFLLLLLSLWIPRLQTQTKTSQEATLLHAVNGAADFASLPTGLFLGLT
 CEEVSDLMEQAKGLAMAVRQKNITLRGHQLRCLARRLPRHLTDEELNALPLDLLFLNPAMFPGQQA
 HFFSLISKANVDVLPRLSLERQRLMEALKCQGVYGFQVSEADVRALGGLACDLPKGFVARSEVLLPWL
 AGCQGPLDQSQEKAVREVLRSRGTQYGPSSKWSVSTLDALQSLVAVLDESIVQSIKPKDKVAEWLQHSR
 PSRLGSKLTVIHPFRFRRDAEQKACPPGKPYKVEDLIFYQNWELACVDGTMRLARQMDLVNEIPFTYEQ
 LSIFKHKLDKTYPQYPESLIQQLGHFFRYVSPEDIHQWNVTSPTVKTLLKVSQKGMNAQAIALVACY
 LRGQQQLDEDVMKALGDIPLSYLCDFSPQDLHSPSSVMWLVPQDLDKCSQRHLGLLYQKACSAFQNV
 GLEYFEKIKTFLGGASVKDLRALSQHNVSMDIATFKRLQVDSL VGLSVAEVQKLLGPNIVDLKTEEDKSP
 VRDWLFRQHQLDRLGLGLQGGIPNGYLVLDFNVREAFSSRASLLGPGFVLIWIPALLPALRLS

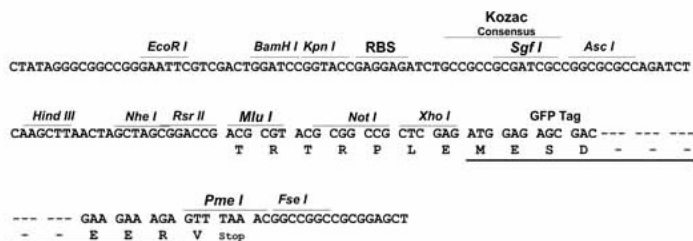
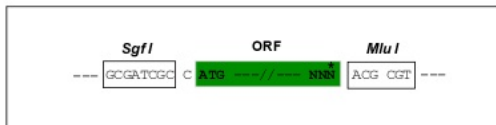
TRTRPLE - GFP Tag - V

Restriction Sites:

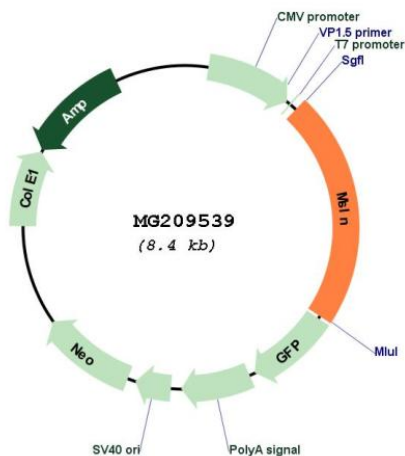
Sgfl-MluI

Cloning Scheme:

Cloning sites used for ORF Shutting:



Plasmid Map:



ACCN: NM_018857
 ORF Size: 1875 bp

OTI Disclaimer:	The molecular sequence of this clone aligns with the gene accession number as a point of reference only. However, individual transcript sequences of the same gene can differ through naturally occurring variations (e.g. polymorphisms), each with its own valid existence. This clone is substantially in agreement with the reference, but a complete review of all prevailing variants is recommended prior to use. More info
OTI Annotation:	This clone was engineered to express the complete ORF with an expression tag. Expression varies depending on the nature of the gene.
Components:	The ORF clone is ion-exchange column purified and shipped in a 2D barcoded Matrix tube containing 10ug of transfection-ready, dried plasmid DNA (reconstitute with 100 ul of water).
Reconstitution Method:	<ol style="list-style-type: none">1. Centrifuge at 5,000xg for 5min.2. Carefully open the tube and add 100ul of sterile water to dissolve the DNA.3. Close the tube and incubate for 10 minutes at room temperature.4. Briefly vortex the tube and then do a quick spin (less than 5000xg) to concentrate the liquid at the bottom.5. Store the suspended plasmid at -20°C. The DNA is stable for at least one year from date of shipping when stored at -20°C.
RefSeq:	NM_018857.2
RefSeq Size:	2135 bp
RefSeq ORF:	1878 bp
Locus ID:	56047
UniProt ID:	Q61468
Cytogenetics:	17 A3.3
Gene Summary:	Membrane-anchored forms may play a role in cellular adhesion.[UniProtKB/Swiss-Prot Function]