

Product datasheet for **MG209530**

D8Ertd354e (BC024084) Mouse Tagged ORF Clone

Product data:

Product Type:	Expression Plasmids
Product Name:	D8Ertd354e (BC024084) Mouse Tagged ORF Clone
Tag:	TurboGFP
Symbol:	D8Ertd354e
Synonyms:	9430010M12Rik; AW208455; D8Ertd354e; Tmem76
Mammalian Cell Selection:	Neomycin
Vector:	pCMV6-AC-GFP (PS100010)
E. coli Selection:	Ampicillin (100 ug/mL)



[View online »](#)

ORF Nucleotide Sequence:

>MG209530 representing BC024084
 Red=Cloning site Blue=ORF Green=Tags(s)

TTTTGTAATACGACTCACTATAGGGCGGCCGGGAATTCGTCGACTGGATCCGGTACCGAGGAGATCTGCC
 GCC**GCGATCGCC**

ATGGGCGCGGGCCCGGCGCTGGCAGCGCTGCTGCTGGCCGGTGGTCTGAGCGCCACGCTGCTGGCCC
 CCGGCCGCGGGCGGAGCCAGATTTAGATGAAAAAAGGAACGTGGAGCTGAAGATGGATCAGGCTTTGCT
 GCTTATTCACAATGAACTCTTGGGGACGAGCTGACTGTGTAAGTCTGACGACTGTTACCAATGC
 ACCTTCCAGCCACTGGCGAACGTCTCTCATGGTGGAAAGCCAGCAAGCCAAGCGTGGCACCTGTCTCTG
 TGAGCACCCAGCAGGGTCCATCCTGCAGGTTAACTCCACCTCGGAGGAGAGAGCAGCTTGCAGGCTGGA
 ATACAAATTTGGAGAATTTGAAACTATCCCTTTTGGTGCAGCATGCTTCCAGCGGGGCCAATAAAATT
 GCCTGTGACATCATCGTCAATGAGAATCCAGTGGACAGTAACCTTCTGTGAGCATCGCATTCTTGTG
 GTCTAGCCCTCATCGTCGAGTATCCCTCCTGAGGCTCTTGTGAGTTTGGATGATGTCAATAACTGGAT
 ATCTAAGGCAATAGCTTCTCGAGAACTGACCGTCTCATCAATTCTGAGCTAGGGTCTCCAGCAGAGCA
 GACCCTCTCAGCGCTGATTACCAACCAGAACTCGGCGTTCTTCTGCGAACCGTCTCCGATGTGTGGACA
 CATTAGGGGTTAGCTCTCGTCTCATGGTCTTTGTTAACTATGGAGGAGGAAAGTATTGGTACTTCAA
 ACATTCAGTTGGAACGGACTGACTGTGGCCGACCTCGTCTTCCCATGGTTTGTATTTATATGGGAACT
 TCAATTTTCTATCAATGACTTCTATCTGCAACGAGGATGTTCAAAACTCAAAGTCTGGGGAAGATTG
 TGTGGAGAAGCTTCTGCTAATCTGTATAGGAGTTATCATTGTCAACCCCAATTATTGCCTTGGTCCATT
 GTCTTGGGATAAAGTGGGATCCCTGGTGTCTGCAGCGGTTGGGAGTGACATACTTCGTGGTGGTGTG
 TTGGAGTTCTTTTCTGGAAGCCTGTGCCTGACAGTTGTACCTTGGAAAGCAGCTGCTTCTCTCCGAG
 ACATCAGTCCAGCTGGCCCCAGTGGCTCACCATCTGACGCTGGAAAGCATTGGCTGGCTTTGACATT
 CTTTCTGCCTGTCCCTGGGTGCCCTACTGGCTACCTTGGCCCTGGCGGTATAGGGGACTTGGGGAAGTAT
 CCTCATTGTAAGGAGCAGCTGGCTACATCGACCGCCTGCTCCTGGGAGACAATCACCTGTACCAGC
 ACCCATCTCCACCGTGTGTATCACACAGAGGTGGCCTACGACCCTGAAGGAGTCTTAGGGACTATCAA
 CTCAATTTGTATGGCGTTTTTAGGAGTTCAGGCAGGAAAAATACTGGTGTATTACAAGGATCAGACGAAA
 GCCATCTGACCCGATTTGCCGCTGGTGTGTATCCTTGGGCTTATTTCTATTGTGTGACAAAAGTGT
 CTGCAATGAAGTTTTATTCCAATAAACAAGAATCTCTGGTCCATCTCGTACGTACCACACTGAGCTG
 CTTTGCCTTCTTATCCTCCTCATTCTCTACCCAGTTGTGGATGTGAAGGCCTGTGGACGGGAACCCCT
 TTCTTCTATCCAGGATGAACCTCATCCTGGTGTATGTTGGCCAGAGGTGTTGGAGAATACTTCCCT
 TCCAGTGGAAAGCTGGCGGATGAGCAGTCACACAAGAGCATCTCATTAGAACATAGTCGCCACGGCTCT
 CTGGGTGCTCATCGCTACGTGCTCTATAAAAAGAAGCTGTTTTGGAAAATC

ACGCGTACGCGGCCGCTCGAG - GFP Tag - GTTTAA

Protein Sequence:

>MG209530 representing BC024084
 Red=Cloning site Green=Tags(s)

MGAGPALAALLLAGSVLSATLLAPGRRAPDLDEKRNVELKMDQALLL IHNELLGTSLVYWKSDDCYQC
 TFQPLANVSHGGKPAKPSVAPVSVSTQHGSI LQVNSTSEERAACRLEYKFGFEGNYSLLVQHASSGANKI
 ACDIIVNENPVDSNLPVSI AFLVGLALIVAVSLRLRLSLDDVNNWISKAIASRETDRLINSELGSPSRA
 DPLSADYQPETRSSANRLRCVDTFRGLALVLMVFVNYGGGKYWYFKHSSWNLTVADLVFPWFVFMGT
 SIFLSMTSILQRGCSKLKLLGKIVWRSFLLICIGV IIVNPNYCLGPLSWDKVRIPGVLQRLGVTYFVVAV
 LEFFFWKVPVDSCTLESSCFSLRDITSSWPQWL TILTLESIWLALTFFLPVPGPCPTGYLPGGGIGDLGKY
 PHCTGGAAGYIDRLLLDGNHLYQHPSSVLYHTEVAYDPEGVLGTINSIVMAFLGVQAGKILVYYKDQTK
 AILTRFAAWCCILGLISIVLTKVSANEGFIPINKNLWSISYVTTLSCAFFILLILYPPVDVKGWLTGTP
 FFYPGMNSILVYVGVHEVLENYFPFQWKL ADEQSHKEHLIQNIVATALWVLIAYVLYKKKLFWKI

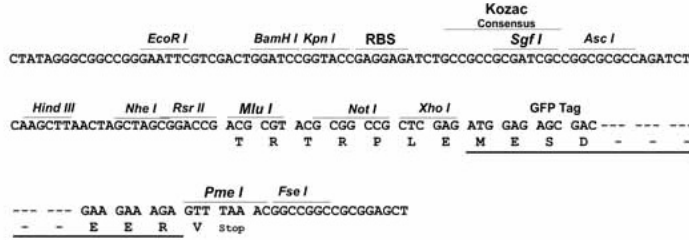
TRTRPLE - GFP Tag - V

Restriction Sites:

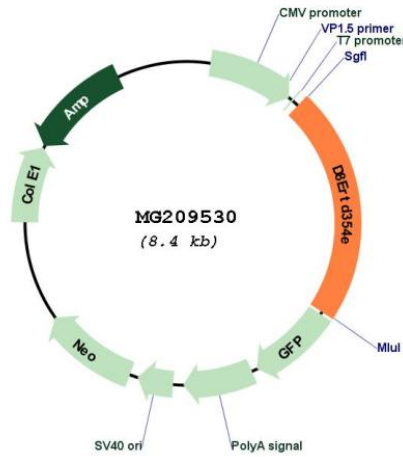
Sgfl-MluI

Cloning Scheme:

Cloning sites used for ORF Shutting:



Plasmid Map:



ACCN: BC024084
 ORF Size: 1872 bp

OTI Disclaimer:	The molecular sequence of this clone aligns with the gene accession number as a point of reference only. However, individual transcript sequences of the same gene can differ through naturally occurring variations (e.g. polymorphisms), each with its own valid existence. This clone is substantially in agreement with the reference, but a complete review of all prevailing variants is recommended prior to use. More info
OTI Annotation:	This clone was engineered to express the complete ORF with an expression tag. Expression varies depending on the nature of the gene.
Components:	The ORF clone is ion-exchange column purified and shipped in a 2D barcoded Matrix tube containing 10ug of transfection-ready, dried plasmid DNA (reconstitute with 100 ul of water).
Reconstitution Method:	<ol style="list-style-type: none">1. Centrifuge at 5,000xg for 5min.2. Carefully open the tube and add 100ul of sterile water to dissolve the DNA.3. Close the tube and incubate for 10 minutes at room temperature.4. Briefly vortex the tube and then do a quick spin (less than 5000xg) to concentrate the liquid at the bottom.5. Store the suspended plasmid at -20°C. The DNA is stable for at least one year from date of shipping when stored at -20°C.
RefSeq:	BC024084.1
RefSeq Size:	2417 bp
RefSeq ORF:	1874 bp
Locus ID:	52120
Cytogenetics:	8 14.22 cM
Gene Summary:	Lysosomal acetyltransferase that acetylates the non-reducing terminal alpha-glucosamine residue of intralysosomal heparin or heparan sulfate, converting it into a substrate for luminal alpha-N-acetyl glucosaminidase.[UniProtKB/Swiss-Prot Function]