

## Product datasheet for **MG209525**

### Keap1 (NM\_016679) Mouse Tagged ORF Clone

#### Product data:

Product Type:	Expression Plasmids
Product Name:	Keap1 (NM_016679) Mouse Tagged ORF Clone
Tag:	TurboGFP
Symbol:	Keap1
Synonyms:	INRF2; mKIAA0132
Mammalian Cell Selection:	Neomycin
Vector:	pCMV6-AC-GFP (PS100010)
E. coli Selection:	Ampicillin (100 ug/mL)



[View online »](#)

**ORF Nucleotide Sequence:**

>MG209525 representing NM\_016679  
 Red=Cloning site Blue=ORF Green=Tags(s)

TTTTGTAATACGACTCACTATAGGGCGGCCGGAATTCGTCGACTGGATCCGGTACCGAGGAGATCTGCC  
 GCC**CGGATCGCC**

ATGCAGCCGAACCAAGCTTAGCGGGCTCCCCGACGACGCAGTTCTGCCCTGTGGTCAAAGTGCC  
 CCGAGGGGGCCGGGACGCAGTGATGTATGCCTCCACGGAGTGAAGGCAGAGGTGACGCCCTCGCAGGA  
 CCGTAACCGAACCTTCAGCTACACACTAGAGGATCACACCAAGCAGGCTTTTGGCGTCATGAACGAGCTT  
 CGCCTGAGCCAGCAACTCTGTGACGTGACCCTGCAGGTCAAATATGAGGACATCCAGCTGCCCAATTCA  
 TGGCTCACAAAGTGGTGTGGCTCCTCCAGCCAGTCTTTAAAGCCATGTTACCAACGGGCTTCGGGA  
 GCAGGGCATGGAGGTGGTGTCCATCGAAGGCATCCACCCTAAGGTCATGGAAAGGCTTATTGAGTTCGCC  
 TACACGGCTCCATCTCCGTGGGCGAGAAGTGTGTCTGCACGTGATGAACGGGGCGGTCATGTACCAGA  
 TTGACAGCGTGGTTCGAGCTGCAGCGACTTCTCGTGCACGAGTGGACCCAGCAACGCCATTGGCAT  
 CGCCAACCTTCGCGGAGCAGATCGGCTGCACTGAACTGCACCAGCGTGCCCGGGAGTATATCTACATGCAC  
 TTCGGGGAGGTGGCAAGCAGGAGGAGTTCTTCAACCTGTCACACTGCCAGCTGGCCACGCTCATCAGCC  
 GGGATGATCTGAACGTACGCTGCGAGTCCGAGGTGTTCCACGCGTGCATCGACTGGGTCAAATACGACTG  
 CCCGACGCGCGCTTCTACGTGCAGGCACTGCTGCGGGCCGTGCGCTGCCATGCGCTCACGCCGCGCTTC  
 CTGCAGACACAGCTGCAGAAAGTGTGAGATCCTGCAGGCCGACGCGCGCTGCAAGGACTACCTGGTGCAGA  
 TATTCAGGAGCTCACGCTGCACAAGCCACGCAGGCACTGCCCTGCCGCGCGCCAAAGTGGGCCGCGCT  
 CATCTACACAGCGGGCGGTTACTCCGACAGTCGCTCAGTACCTGGAGGCTACAACCCGAGCAATGGC  
 TCCTGGCTGCGCTGGCCGATCTACAGGTGCCGCGCAGTGGGCTGGCAGGCTGCGTGGTGGTGGCTGC  
 TATACGCTGTGGGCGGCCGAACAACCTCCGGATGGCAACACTGACTCCAGCGCCCTGGACTGTACAA  
 CCCATGACCAACCAGTGGTCCGCTGTGCTCTATGAGCGTGCCACGCAACCGCATCGGGGTGGGGGTC  
 ATAGATGGCCACATCTACGCACTCGGGGTTCCACGGCTGCATCCACCACAGCAGCGTGGAGAGATATG  
 AGCCAGAGCGGGACGAGTGGCATCTAGTCGCGCCAATGTTGACACGGAGGATTGGCGTGGGCGTGGCAGT  
 GCTCAACCGCTTGTGTATGCAGTGGGGGCTTTGACGGGACTAACCGGCTTAACCCGAGAATGTTAC  
 TATCCAGAGAGGAATGAGTGGCGGATGATCACACCGATGAATACCATCCGAGCGGGGCCGGGTCTGCG  
 TGCTGCACAAGTGTATCTATGCAGCAGGGGCTACGATGGCAGGACCAGTTGAACAGTGTGGAGCGCTA  
 CGAGTGGAGACAGAGACCTGGACTTTCGTAGCCCCATGAGGCATCACCGTAGTGGCTGGGATTACT  
 GTGCACCAGGGCAAGATCTACGTCCTCGGAGGCTATGATGGCCACTTTTCTGGACAGTGTGGAATGCT  
 ATGACCCGGACAGTGATACCTGGAGTGAAGTGACCCGATGACATCTGGCCGACGCGGGTGGGTGTGGC  
 CGTCACCATGGAACCCTGTCCGAAGCAAATTGATCAACAAAACCTGTACCTGC

AG**CGGACCG**ACGCGTACGCGGCCGCTCGAG - GFP Tag - GTTTAA

**Protein Sequence:**

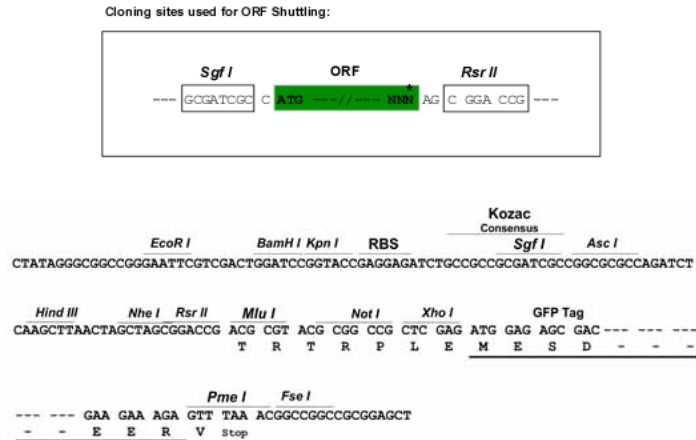
>MG209525 representing NM\_016679  
 Red=Cloning site Green=Tags(s)

MQPEPKLSGAPRSSQFLPLWSKCEGAGDAVMYASTECKAEVTPSQDGNRTFSYTLLEDHTKQAFGVMNEL  
 RLSQQLCDVTLQVKYEDIPAAQFMAHKVVLASSPVFKAMFTNGLREQGMEVVSIEGIHPKVMERLIEFA  
 YTASISVGEKCVLHMNGAVMYQIDSVVRACSDFLVQQLDPSNAIGIANFAEQIGCTELHQRAREYIYMH  
 FGEVAKQEELFNL SHCQLATLISRDDLNRCESEVFHACIDWVKYDCPQRRFYVQALLRAVRCHALTPRF  
 LQTQLQKCEILQADARCKDYL VQIFQEL TLHKPTQAVPCRAPKVGRLIYTAGGYFRQSL SYLEAYNPSNG  
 SWLRLADLQVPRSLAGCVVGGLLYAVGGRNNSPDGNTDSSALDCYNPMTNQWSPCASMSVPRNRIGVGV  
 IDGHIYAVGGSHGCIHHSVERYEPERDEWHLVAPMLTRRIGVGVAVLNRLLYAVGGFDGTRNLNSAECY  
 YPERNEWRMITPMNTIRSGAGVCVLHNCIYAAGGYDGDQLNSVERYDVETETWTFVAPMRHRSALGIT  
 VHQKGIYVLGGYDGHFTFLDSVECYDPSDWTWSEVTRMTSGRSGVGVAVTMEPCRKQIDQQNCTC

SGPTRRRLE - GFP Tag - V

**Restriction Sites:**

Sgfl-RsrII

**Cloning Scheme:**


**ACCN:** NM\_016679

**ORF Size:** 4467 bp

**OTI Disclaimer:** Due to the inherent nature of this plasmid, standard methods to replicate additional amounts of DNA in E. coli are highly likely to result in mutations and/or rearrangements. Therefore, OriGene does not guarantee the capability to replicate this plasmid DNA. Additional amounts of DNA can be purchased from OriGene with batch-specific, full-sequence verification at a reduced cost. Please contact our customer care team at [custsupport@origene.com](mailto:custsupport@origene.com) or by calling 301.340.3188 option 3 for pricing and delivery.

The molecular sequence of this clone aligns with the gene accession number as a point of reference only. However, individual transcript sequences of the same gene can differ through naturally occurring variations (e.g. polymorphisms), each with its own valid existence. This clone is substantially in agreement with the reference, but a complete review of all prevailing variants is recommended prior to use. [More info](#)

**OTI Annotation:** This clone was engineered to express the complete ORF with an expression tag. Expression varies depending on the nature of the gene.

**Components:** The ORF clone is ion-exchange column purified and shipped in a 2D barcoded Matrix tube containing 10ug of transfection-ready, dried plasmid DNA (reconstitute with 100 ul of water).

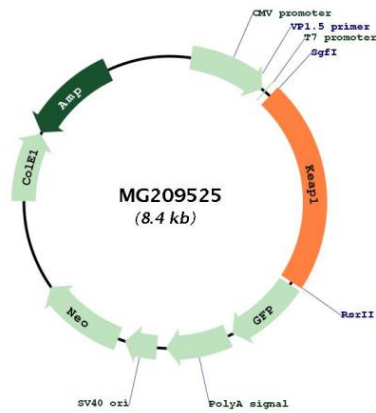
- Reconstitution Method:**
1. Centrifuge at 5,000xg for 5min.
  2. Carefully open the tube and add 100ul of sterile water to dissolve the DNA.
  3. Close the tube and incubate for 10 minutes at room temperature.
  4. Briefly vortex the tube and then do a quick spin (less than 5000xg) to concentrate the liquid at the bottom.
  5. Store the suspended plasmid at -20°C. The DNA is stable for at least one year from date of shipping when stored at -20°C.

**RefSeq:** [NM\\_016679.2](#)

RefSeq Size: 3619 bp  
 RefSeq ORF: 1875 bp  
 Locus ID: 50868  
 UniProt ID: [Q9Z2X8](#)  
 Cytogenetics: 9 A3

**Gene Summary:** Acts as a substrate adapter protein for the E3 ubiquitin ligase complex formed by CUL3 and RBX1 and targets NFE2L2/NRF2 for ubiquitination and degradation by the proteasome, thus resulting in the suppression of its transcriptional activity and the repression of antioxidant response element-mediated detoxifying enzyme gene expression. Retains NFE2L2/NRF2 and may also retain BPTF in the cytosol. Targets PGAM5 for ubiquitination and degradation by the proteasome (By similarity).[UniProtKB/Swiss-Prot Function]

**Product images:**



Circular map for MG209525