

## Product datasheet for **MG209524**

### **Nfatc2 (BC064006) Mouse Tagged ORF Clone**

#### **Product data:**

Product Type:	Expression Plasmids
Product Name:	Nfatc2 (BC064006) Mouse Tagged ORF Clone
Tag:	TurboGFP
Symbol:	Nfatc2
Synonyms:	NFAT1, NFAT1-D
Mammalian Cell Selection:	Neomycin
Vector:	pCMV6-AC-GFP (PS100010)
E. coli Selection:	Ampicillin (100 ug/mL)



[View online »](#)

**ORF Nucleotide Sequence:**

>MG209524 representing BC064006  
 Red=Cloning site Blue=ORF Green=Tags(s)

TTTTGTAATACGACTCACTATAGGGCGGCCGGAATTCGTCGACTGGATCCGGTACCGAGGAGATCTGCC  
 GCC**CGGATCGCC**

ATGGACGTCCCGAGCCGACGCCGACCCCGATGGCGGGACGGCCCGCCACGAGCCCGGGGACGTC  
 CCCAAGACGAGCTGGACTTTTCCATCCTCTCGATTATGACTATCTGAACCTATCGAAGAAGAACCGAT  
 CGCACATAAGGCCATCAGCTCACCTCCGGACTCGCATACCCGGATGATGTCCTGGACTATGGCCTCAAG  
 CCATGCAACCCCTTGCCAGTCTCTCTGGCGAGCCCCCTGGCCGGTTCGGAGAGCCGGATAGTATAGGGT  
 TCCAGAACTTTCTGAGCCGGTCAAGCCAGCAGGGGCTTCGGGCCGAGCCCTCGGATCGAGATCACTCC  
 ATCCCACGAACTGATGCAGGCAGGGGGGCCCTCCGTGGGAGAGACGCCGGCTGTCCCCGAGCAGCCG  
 GCCCTGGCCCTGGCCGGCTGGCCGCCAGCCGAGGTTACACTGCCCGTGCCGGCTACGAGGGCTACC  
 GCGAGCCGCTTTGCTTGAGCCCCGCTAGCAGCGGCTCCTCTGCCAGCTTCATTTCTGACACCTTCTCCCC  
 CTACACCTCGCCCTGCGTCTACCCAATAACGCCGGGCCGACGACCTGTGTCCCAAGTTTCAAACATC  
 CCTGCTCATTATCCCCAGAACCTCTCCAATAATGTCACCTCGAACAGCCTCGCCGAGGACAGCTGCC  
 TGGGCCGACACTCGCCCGTCCCGCTCCGGCATCCCGCTCCTCCTCACCCGGTGCCAAGCGGAGGCATTC  
 GTGCGCAGAGGCTTTGGTTGCTCCTCTGCCCGCAGCCTCACCCAGCGCTCCCGGAGCCCTCGCCACAG  
 CCCTCGCCTCACGTGGCACTGCAGGACGACAGCATCCCGCTGGGTACCCCCACGCGCCGGCTCTGCTG  
 TTCTCATGGATGCCCTCAACACCTGGCCACCGACTCGCCCTGCGGGATCCCTCCAAGATATGGAAGAC  
 CAGTCTGACCCGACGCTGTGTCCACCCTCCGTCCAAGGTGGCTGGCCGCCACATCTACCCTACT  
 GTGGAGTCTCTGGGGCCATGTGAGCAGGAGGAGAGGAATTCGCTCCAGAGTCCATCCTGCTGGTAC  
 CACCTACTTGGCCAAGCAGTTGGTGGCCGCAATCCCATCTGCAGCATCCCTGTGACTGCTCCTCC  
 ACCACTCGAGTGGCCACTCTCCAATCAGTCGGGCTCCTATGAGCTACGGATTGAGGTCCAACCCAAGCCC  
 CATCACCGGGCCACTATGAGACGGAGGCGAGCCGTGGCGCTGTCAAAGCCCCAACAGGAGGACACCCTG  
 TGGTGCAGCTCCACGGCTACATGGAGAACAAGCCTCTGGGGCTTCAGATCTTCATTGGGACAGCAGATGA  
 GAGGATCCTTAAGCCGCACGCTTCTACCAAGTACACAGGATCACTGGGAAAACGGTACCACCACGAGC  
 TATGAGAAGATCGTAGGCAACACCAAGTCTGGAGATCCCTGGAGCCAAAGAACAACATGAGAGCCA  
 CCATCGACTGTGCAGGCATCCTGAAGCTCCGAAACGCTGACATCGAGCTGCGGAAGGGCAGACGGACAT  
 CGGCAGGAAGAACACGCGTGTGGCCTGGTGTCCGCTGCACGTCCCAGAGCCAGTGGGCGCATCGTC  
 TCCTGCAGGCTGCGTCCAACCCATCGAGTGTGTAAGTCAGGGCTGAGGAAGGGGCATGTGAGCATCC  
 CCCTGGGCGAGGTGACCTGCAGGAATCCACCGTCTGTGGTGACCCAAAGGGCAGACACTGTGCCAGGT  
 TTTGATGTCTGCTTCTGTCTGTTGGAGACTTCTCTCAGGAAATAAAACA

AG**CGGACCG**ACGCGTACGCGGCCGCTCGAG - GFP Tag - GTTTAA

**Protein Sequence:**

>MG209524 representing BC064006  
 Red=Cloning site Green=Tags(s)

MDVPEPQPDGDDGPGHEPGGSPQDELDFSIKFDYDYLNPIDEEPIAHKAISSPSGLAYPDDVLDYGLK  
 PCNPLASLSGEPGRFGEPDSIGFQNFSPVKPAGASGSPRIEITPSHELMQAGGALRGRDAGLSPEQP  
 ALALAGVAASPRFTLPVPGYEGYREPLCLSPASSGSSASFISDTFSPYTPCVSPNAGPDDLCPQFQNI  
 PAHYSRPTSPIMSPRTSLAEDSCLGRHSPVPRPASRSSSPGAKRRHSCEALVAPLPAASPQRSRSPSPQ  
 PSPHVALQDSSIPAGYPPTAGSAVLMALNLTATDPCGIPSKIWKTSPPDPTPVSTAPSKAGLARHIYPT  
 VEFLGPCEQEERRNSAPESILLVPPTWPKQLVPAIPICSIPTASLPLEWPLSNQSGSYELRIEVQPKP  
 HHRAYHETEGSRGAVKAPTGGHPVYQLHGYMENKPLGLQIFIGTADERILKPHAFYQVHRITGKVTVTTTS  
 YEKIVGNTKVLEIPLPKNNMRATIDCAGILKLRNADIELRKGETDIGRKNTRVRLVFRVHVPEPSGRIV  
 SLQAASNPICCKSGLRKGHVSIPPGQVTCRNPVCGDPKGRHCAQVLMASVCLWRLLSGNKT

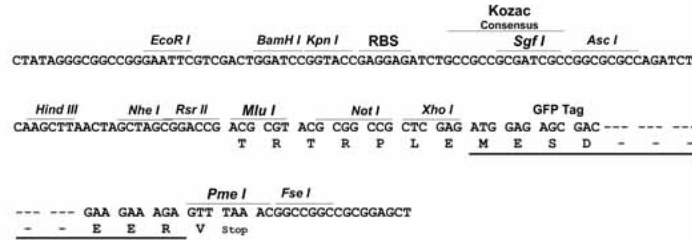
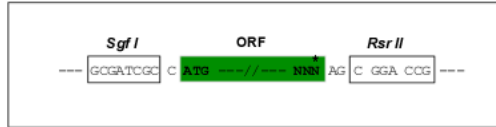
SGP**TRRRLE** - GFP Tag - V

**Restriction Sites:**

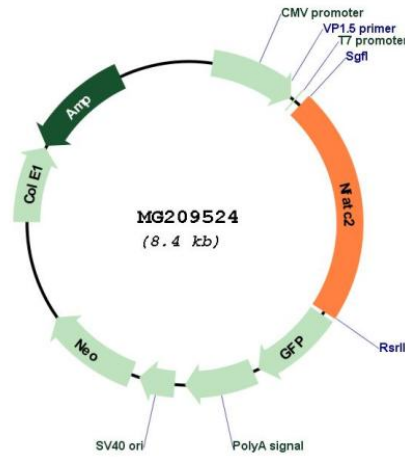
Sgfl-RsrII

Cloning Scheme:

Cloning sites used for ORF Shuttling:



Plasmid Map:



ACCN: BC064006  
 ORF Size: 1872 bp

<b>OTI Disclaimer:</b>	The molecular sequence of this clone aligns with the gene accession number as a point of reference only. However, individual transcript sequences of the same gene can differ through naturally occurring variations (e.g. polymorphisms), each with its own valid existence. This clone is substantially in agreement with the reference, but a complete review of all prevailing variants is recommended prior to use. <a href="#">More info</a>
<b>OTI Annotation:</b>	This clone was engineered to express the complete ORF with an expression tag. Expression varies depending on the nature of the gene.
<b>Components:</b>	The ORF clone is ion-exchange column purified and shipped in a 2D barcoded Matrix tube containing 10ug of transfection-ready, dried plasmid DNA (reconstitute with 100 ul of water).
<b>Reconstitution Method:</b>	<ol style="list-style-type: none"> <li>1. Centrifuge at 5,000xg for 5min.</li> <li>2. Carefully open the tube and add 100ul of sterile water to dissolve the DNA.</li> <li>3. Close the tube and incubate for 10 minutes at room temperature.</li> <li>4. Briefly vortex the tube and then do a quick spin (less than 5000xg) to concentrate the liquid at the bottom.</li> <li>5. Store the suspended plasmid at -20°C. The DNA is stable for at least one year from date of shipping when stored at -20°C.</li> </ol>
<b>RefSeq:</b>	<a href="#">BC064006.1</a>
<b>RefSeq Size:</b>	2080 bp
<b>RefSeq ORF:</b>	1874 bp
<b>Locus ID:</b>	18019
<b>Cytogenetics:</b>	2 88.91 cM
<b>Gene Summary:</b>	Plays a role in the inducible expression of cytokine genes in T-cells, especially in the induction of the IL-2, IL-3, IL-4, TNF-alpha or GM-CSF. Promotes invasive migration through the activation of GPC6 expression and WNT5A signaling pathway.[UniProtKB/Swiss-Prot Function]