

Product datasheet for **MG209502**

Pgm2l1 (NM_027629) Mouse Tagged ORF Clone

Product data:

Product Type:	Expression Plasmids
Product Name:	Pgm2l1 (NM_027629) Mouse Tagged ORF Clone
Tag:	TurboGFP
Symbol:	Pgm2l1
Synonyms:	4931406N15Rik; AI553438; BM32A
Mammalian Cell Selection:	Neomycin
Vector:	pCMV6-AC-GFP (PS100010)
E. coli Selection:	Ampicillin (100 ug/mL)



[View online »](#)

ORF Nucleotide Sequence:

>MG209502 representing NM_027629
 Red=Cloning site Blue=ORF Green=Tags(s)

TTTTGTAATACGACTCACTATAGGGCGGCCGGAATTCGTCGACTGGATCCGGTACCGAGGAGATCTGCC
 GCC**CGGATCGCC**

ATGGCTGAGAACGCAGATGATGACCTGAACTCTAACCTGCTCCACGCCCCCTACCTCACTGGGGACCCCC
 AGCTAGACACGGCCATCGGGCAGTGGCTGCGTTGGGACAAGAATCCCAAAACAAAAGAGCAGATTGAAAA
 TCTCTTGCGGAATGGGATGAACAAGGAATTGCGTGATCGTCTTTGTTGCCGGATGACTTTTGGGACTGCA
 GGACTTCGATCTGCCATGGGAGCAGGGTTTGTCTACATCAATGACCTTACAGTAATACAGTCAACACAGG
 GGATGTACAAATACCTGGAGAGATGTTTTTTCAGACTTCAAGCAAAGAGGCTTTGTTGTGGCTATGACAC
 TCGGGGTCAAGTACTAGCAGCTGCAGCAGCCAGAGGCTTGCTAAACTCACAGCTGCAGTCTGCTTGTCT
 AAAGATATTCCTGTTTACCTTTTCTCAAGATACGTTTCTACACCTTTCTGACCATATGCCGTTCCAGGAGC
 TCAAAGCAGTTGCAGGTGTGATGATTACTGCATCTCATAACCGCAAAGAGGACAACGGGTACAAGTTTAA
 TTGGGAAACTGGTCTCAATCACATCTCCACATGATAAAGAAATCTGAAATGTATAGAAGAGTGTGTG
 GAACCCTGGAATGATTCTTGGAAATGATAATTTAGTGGACACCAGCCCACTGAAGAAAGATCCTCTGCAGG
 ACATTTGCAAGAAATACATGGAAGATCTGAAGAAGATCTGTTTTTACAGGACTTAAATCAAAGACCAC
 CTTGAAATTTGTTTACATCCTCCTCCATGGAGTTGGACATGACTACGTGCAGTTGGCTTTTCAAGTATTT
 GGTTTTAAAGCCTCCAATTCAGTCCCAGAACAGAAAGATCCAGATCCAGACTTTTCTACTGTTAAATGTC
 CAAACCCTGAAGAAGGAGAATCTGTGCTGGAAGTGTCCCTGAGACTGGCAGAGAAAGAAATGCCCGGAT
 AGTGCTAGCCACAGATCCTGATGCCGACCGGCTGGCTGTGGCAGAACTCAGGAGAATGGCCGTTGGAAA
 GTTTTTCACAGGAAATGAGCTGGCAGCTTTGTTGGTGGTGGATGTTGATTGCTGGAAGAAAAACAAAC
 CAAACCGCGATGTGAAGAATGTTTACATGCTAGCCACCCTGTCTTTCTAAAATTTTAAAGGCAATTGC
 ACTTAAAGAAGGATTTTCATTTTGAAGAAACATTACCAGGCTTTAAATGGATTGGAAGTAGGATAAAAGAC
 CTCTAGGAAATGGAAAAGAAGTCTTTTTGCATTTGAAGAGTCTATTGGCTTTCTGTGTGGAACCTCCG
 GTTGGACAAAGATGGAGTGAAGTGCAGCTGCTGTTGTTGCTGAGATGGCCTTTTCTGGATACCAGGAA
 GGTAACACTGATGGAGCAACTGACAAAAGTGTATGAAATATACGGTTACCATATGTCCAAAACCTTCATAT
 TTCTTGTGTTATGATCCACCTACCATCAAACCATATTTGAAAGGATTCGAAATTTTGTGCTCCAAAGG
 AATATCCAAAATTTTGTGGGCTTTTGTATTTGTCATGTACGGGACATAACCACTGGATATGATAGCAG
 CCAGCCAAATAAGAAATCAGTACTGCCTGTGAGTAAAAACAGCCAAATGATTACATTTACCTTCCAAAAC
 GGCTGTGTCGCTACTCTCGAACAAGTGGGACAGAACCGAAGATAAAGTATTATGCAGAGATGTGTGCAT
 CGCTGGCCAGAGTGACACTACCTTCTGGAAGAAGAATTAAGAAACTCATTGACGCGCTGATAGAGAA
 TTTTCTTGAGCCAGTAAGAACGCACTGGTCTGGCGCTCTGTG

ACGCGTACGCGGCCGCTCGAG - GFP Tag - GTTTAA

Protein Sequence:

>MG209502 representing NM_027629
 Red=Cloning site Green=Tags(s)

MAENADDDLNSNLLHAPYL T GDPQLDTAIGQWLRWDKNPKTKEQIENLLRNGMKNELRDRLCCRMTFGTA
 GLRSAMGAGFCYINDLTVIQSTQGMKYLERCF SDFKQRFVVGVDTRGQVTSSCSSQRLAKLTAAVLLA
 KDIPVYLF SRYVPTPFVYAVQELKAVAGVMITASHNRKEDNGYKVVYWGTAQITSPHDKEILKCIIECV
 EPWNDSWNDNLVDT S PLK D PLQDICKYMEDLKKICFYRDLNSKTTLKFVHTSFHGVGHYVQLAFQVF
 GFKPPIPVPEQKDPDPDFSTVKCPNPEEGESVLELSLRLAEKENARIVLATDPDADRLAVAE LQENGRWK
 VFTGNEL AALFGWWMFDCWKKKNPNADVKNVYMLATTVSSKILKAIALKEGFHFEETLPGFKWI G SRIKD
 LLGNGKEVLF AFEESIGFLCGTSVLDKDGVSAAAVVAEMASFLDTRKVTLMQLTKVYIEIYGHM SKTSY
 FLCYDPPTIKTIFERIRNFESPKEYPKFCGAFAILHVRDITTTGYDSSQPNKKS VLPVSKNSQMITFTFQN
 GCVATLRTSGTEPKIKYYAEMCASPGQSDTTFLEEELKKLIDALIENFLEPSKNALVWRVS

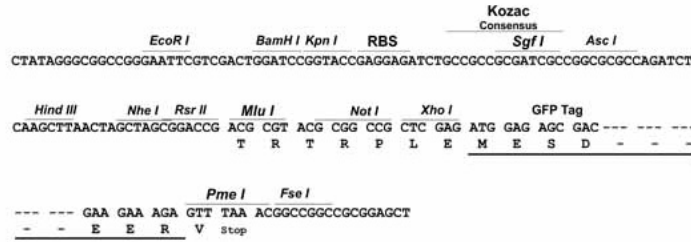
TRTRPLE - GFP Tag - V

Restriction Sites:

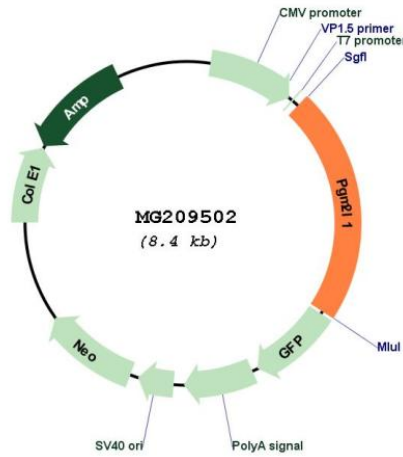
Sgfl-MluI

Cloning Scheme:

Cloning sites used for ORF Shutting:



Plasmid Map:



ACCN: NM_027629
 ORF Size: 1863 bp

OTI Disclaimer:	The molecular sequence of this clone aligns with the gene accession number as a point of reference only. However, individual transcript sequences of the same gene can differ through naturally occurring variations (e.g. polymorphisms), each with its own valid existence. This clone is substantially in agreement with the reference, but a complete review of all prevailing variants is recommended prior to use. More info
OTI Annotation:	This clone was engineered to express the complete ORF with an expression tag. Expression varies depending on the nature of the gene.
Components:	The ORF clone is ion-exchange column purified and shipped in a 2D barcoded Matrix tube containing 10ug of transfection-ready, dried plasmid DNA (reconstitute with 100 ul of water).
Reconstitution Method:	<ol style="list-style-type: none">1. Centrifuge at 5,000xg for 5min.2. Carefully open the tube and add 100ul of sterile water to dissolve the DNA.3. Close the tube and incubate for 10 minutes at room temperature.4. Briefly vortex the tube and then do a quick spin (less than 5000xg) to concentrate the liquid at the bottom.5. Store the suspended plasmid at -20°C. The DNA is stable for at least one year from date of shipping when stored at -20°C.
RefSeq:	NM_027629.3
RefSeq Size:	5076 bp
RefSeq ORF:	1866 bp
Locus ID:	70974
UniProt ID:	Q8CAA7
Cytogenetics:	7 E2
Gene Summary:	Glucose 1,6-bisphosphate synthase using 1,3-bisphosphoglycerate as a phosphate donor and a series of 1-phosphate sugars as acceptors, including glucose 1-phosphate, mannose 1-phosphate, ribose 1-phosphate and deoxyribose 1-phosphate. 5 or 6-phosphosugars are bad substrates, with the exception of glucose 6-phosphate. Also synthesizes ribose 1,5-bisphosphate. Has only low phosphopentomutase and phosphoglucomutase activities (By similarity).[UniProtKB/Swiss-Prot Function]