

Product datasheet for **MG209501**

Gpaa1 (NM_010331) Mouse Tagged ORF Clone

Product data:

Product Type:	Expression Plasmids
Product Name:	Gpaa1 (NM_010331) Mouse Tagged ORF Clone
Tag:	TurboGFP
Symbol:	Gpaa1
Synonyms:	C80044; mGAA1
Mammalian Cell Selection:	Neomycin
Vector:	pCMV6-AC-GFP (PS100010)
E. coli Selection:	Ampicillin (100 ug/mL)



[View online »](#)

ORF Nucleotide Sequence:

>MG209501 representing NM_010331
 Red=Cloning site Blue=ORF Green=Tags(s)

TTTTGTAATACGACTCACTATAGGGCGGCCGGGAATTCGTCGACTGGATCCGGTACCGAGGAGATCTGCC
 GCC**GCGATCGCC**

ATGGGTCTCTGTGCGACCCGGTGCGCCGGCGCGCTCGCCCGCATCGTCTTGCGCCTTAACACACCTC
 TCTGTGTGCTGAGCTACGTGGCCGGGATCGCCTGGTTTCTGGCGCTGGCTTTCCGCCGTTAACCCAGCG
 CACTTACATGTCTGAGAATGCCATGGGCTCCACCATGGTGGAGGAACAGTTTGTAGTGGAGACCCGCT
 CGGAGCTTTGCCCGGACTTCGCTGCCACCCGCAAGAAGCCGGGGCTCTGCCAGTAGCCTGGTGGAAAC
 GGTCCATGCGATCCGTAGGGCTGGAGGTCTACACCAGAGCTTCTCCGCAAACTACCCTCCCGGATGA
 GACCCACGAGCGCTATATGGTGTGAGTACCAACGTGTATGGCATCTGCGGGCCCCACGTTCTGCCAGT
 ACCGAGTCCCTGGTGCTACTGTACCCTGTGGTCCAGATGCCACCAATAGCCAGGCTGTGGGGTTGTTGT
 TGGCACTTGTGCCATTTCCGAGGGCAGATTTACTGGGCCAAAGATATCATTCTTCTGGTAACAGACCA
 TGATCTTCTGGGCACCGAGGCTTGGCTCGAAGCCTACCATGACATTAATGTTACAGGCATACAGTCACT
 CCCTGCAGGGCAGGGCTGGAGCCATCCAGGCTGCTGTAGCTCTGGAGCTGAGCAGCGACGTGGTACCA
 GCCTCGATGTGACAGTGGAGGGACTCAACGGTCAGCTGCCCAACCTTGATCTGCTCAACCTCTCCAGAC
 CTTCTGCCAGAAAGGGGGCTGTTGTGTACTCCAGGGCAAGCTGCAGCCCCAGGACTGGACGTCCTC
 GAAGGGCCGTTGACGGGTTTGCAGACACTGCTACTCATGGTGTGCGGCAGGCTCTGGCCGGCCCCACG
 GCCCCACGGCCTTTTCTGCGCTACGGAGTGGAGGCACTAACCTACCGGCATCAATAGCTTCCGCCA
 ATACAAGTATGATTTGGCGACAGTGGGCAAGGCTCTGGAGGGCATGTTCCGCAAGCTCAACCACCTCCTG
 GAGCGCTGCACCAAGTCACTTCTTCTACCTGCTGCCGGCCTCTCCGCTTTGTCTCCATCGGACTCT
 ACATGCCCGCCACGGGCTTCTGCTCCTAGTCTTGGACTCAAGGCTCTGGAGCTGTGGTCAAGTACA
 CCAGGCTGGAGTCAACCCGGAGGAGGCTGGGAAGGCCCTAGTCCCGGGACTCCACTCTTGCCAACACAG
 GGTGTGGGCTGCGCTCACTTACGGCACCCCTGCTGATCTCTCAGGCCATGGGTCTGGCCCTCTATTTC
 TGCTGTGCTGGGCCAACATTTAGTACTCAGCATTTCCAGTGGCCGAAGCCGAGGCTGTTGTGTGAC
 GCTGCTCGGATTTATGTAGCCGGCTGGCCCTCCACACAACACCCACCGAGTGGTCAACTCACAGGTC
 CCAGACAGGGCTGGATGGCACTGAAACTAGTGGCCCTCATCTACCTGGCACTGCAGTGGGTTGCATTG
 CTCTCCTCAATTTCTCCCTGGGCTTCTGCTGGCTGCCACCATGGTCCCTGCTGCTGCACCTGCCAAGCC
 CCATGGGCCCCGACACTGTATGCTGCCCTGCTGGTAGTACCAGCCAGCAGTCACTCTTCGGTAGC
 CTGTTCTGTGGCGGAGCTGCTGGAGGTACCGCTGTCTTGGCAGAGGTTGGCAGCTCTTCTCACAG
 CATTGGCCAGGGTGTGCTGGAACACTACACTATGGCGCCCTCTCTCCAATACTGGCCTTGGGTCT
 GTATCCTTGTGCTGCTTTTCTGGAATGCTCTTCTGGAAG

ACGCGTACGCGGCCGCTCGAG – GFP Tag – GTTTAA

Protein Sequence:

>MG209501 representing NM_010331
 Red=Cloning site Green=Tags(s)

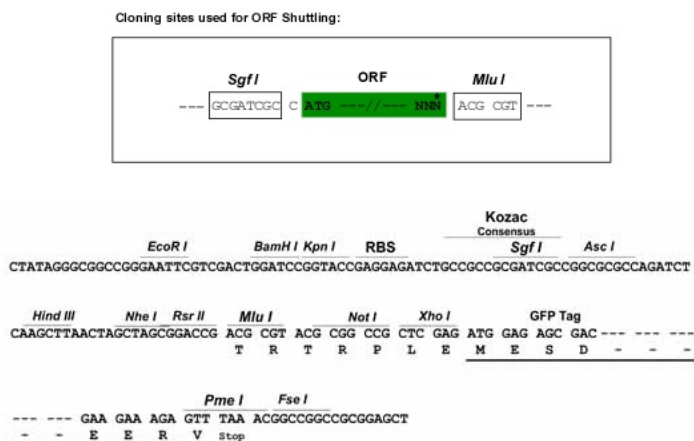
MGLLSDPVRRLARIVLRLNTPLCVLSYVAGIAWFLALAFPPLTQRTYMSNAMGSTMVEEQFVGGDRA
 RSFARDFAAHRKPGALPVAWLERSMRVSGLEVYTSQFSRKLPPDETHRYMVSNTVYVILRAPSAS
 TESLVLTVPCPDATNSQAVGLLLALAAHFRGQIYWAKDIIIFLVDHDLGTEAWLEAYHDINVTGIQSS
 PLQGRAGAIQAVALLELSSDVVTSLDVTVGLNGQLPNLDLLNLFQTFQCQKGLLCTLQGLQPDWTS
 EGPLQGLQTLMLVLRQASGRPHGPHGLFLRYGVEALTLRGINSFRQYKYDLATVGKALEGMFRKLNHLL
 ERLHQSFYLLPALSRFVSIPLYMPATGFLLLVLGLKALELWMQLHQAGVNPPEEAGKAPSPGTPLLPTQ
 VGGLASLTAPLLISQAMGLALYFLPVLGQHLATQHFPVAEAEAVVLTLLAIYVAGLALPHNTHRVNSQV
 PDRGWMALKLVALIYLALQLGCIALLNFSLGFLLAATMVPAAALAKPHGPRTLAAALLVVTSPAVTLFGS
 LFLWRELLEVPVSLAEGWQLFLTALAQQVLEHYTYGALLFPILALGLYPCWLLFNNVLFWK

TRTRPLE – GFP Tag – V

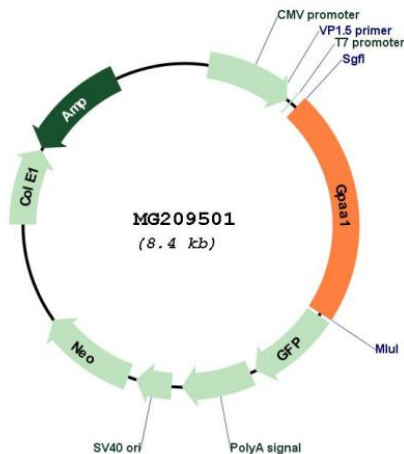
Restriction Sites:

Sgfl-MluI

Cloning Scheme:



Plasmid Map:



ACCN: NM_010331
 ORF Size: 1863 bp

OTI Disclaimer:	The molecular sequence of this clone aligns with the gene accession number as a point of reference only. However, individual transcript sequences of the same gene can differ through naturally occurring variations (e.g. polymorphisms), each with its own valid existence. This clone is substantially in agreement with the reference, but a complete review of all prevailing variants is recommended prior to use. More info
OTI Annotation:	This clone was engineered to express the complete ORF with an expression tag. Expression varies depending on the nature of the gene.
Components:	The ORF clone is ion-exchange column purified and shipped in a 2D barcoded Matrix tube containing 10ug of transfection-ready, dried plasmid DNA (reconstitute with 100 ul of water).
Reconstitution Method:	<ol style="list-style-type: none"> 1. Centrifuge at 5,000xg for 5min. 2. Carefully open the tube and add 100ul of sterile water to dissolve the DNA. 3. Close the tube and incubate for 10 minutes at room temperature. 4. Briefly vortex the tube and then do a quick spin (less than 5000xg) to concentrate the liquid at the bottom. 5. Store the suspended plasmid at -20°C. The DNA is stable for at least one year from date of shipping when stored at -20°C.
RefSeq:	NM_010331.2 , NP_034461.1
RefSeq Size:	2036 bp
RefSeq ORF:	1866 bp
Locus ID:	14731
UniProt ID:	Q9WTK3
Cytogenetics:	15 D3
Gene Summary:	Essential for GPI-anchoring of precursor proteins but not for GPI synthesis. Acts before or during formation of the carbonyl intermediate.[UniProtKB/Swiss-Prot Function]