

Product datasheet for **MG209494**

Amot (BC057638) Mouse Tagged ORF Clone

Product data:

Product Type:	Expression Plasmids
Product Name:	Amot (BC057638) Mouse Tagged ORF Clone
Tag:	TurboGFP
Symbol:	Amot
Synonyms:	CAG-2, mKIAA1071
Mammalian Cell Selection:	Neomycin
Vector:	pCMV6-AC-GFP (PS100010)
E. coli Selection:	Ampicillin (100 ug/mL)



[View online »](#)

ORF Nucleotide Sequence:

>MG209494 representing BC057638
 Red=Cloning site Blue=ORF Green=Tags(s)

TTTTGTAATACGACTCACTATAGGGCGGCCGGAATTCGTCGACTGGATCCGGTACCGAGGAGATCTGCC
 GCC**CGCATCGCC**

ATGGAACACCGAGGTCCCCGCCAGAATACCCTTTCAAGGGCGTGCCATCCCAGTCTGTAGTGTGCAAGT
 CCCAAGAGCCAGGGCACTTCTATAGTGAGCATCGCCTGAACCAGCCAGGGAACAGAGGGGCAACTGAT
 GAGGTATCAGCACCCCTGAGTATGGGCGAGCCAGGCAACACAGGACATCTCCTCGCTGTCTTTGTCA
 GCCAGAACTCTCAACCTCATAGCCCTACTTCTTCCCTGACAGCTGGGGCTTCCAGCTTGCCTTGTCTGC
 AGTCTCCGCCGTCCACTAGATTGCCTCTGGTCAACACCTGGTCCCGAACCAAGGTGACCACTCTGCTCA
 CCTGTCAAGGCATCAGCAGCATCTTCTTTCGAGTCAGAGTCATCAGGGGGACCACTACCGTCACGCCACG
 GCCAGCCTGACTTCAGCGCAGCAGCAGCCAGGAGAAGCCTACTCAGCTATGCCTCGGGCTCAGCAGTCTG
 CTTCTTATCAGCCCATGCCAGCTGACCCCTTTGCTATCGTCTCTAGAGCTCAGCAGATGGTTGAGATCCT
 GTCTGATGAGAAATCGCAACTTGCAGCAGGAGTTGGATGGATGCTATGAGAAGGTGGCGAGACTGCAGAAG
 GTGGAGACAGAAATCCAACGGGTCTCAGAGGCTTATGAGAAGTGGTGAAGTCACTTCCAAAAGAGAGG
 CTCTGGAGAAAGCCATGAGGAACAAGCTGGAGGGCGAGATTAGAAGGATGCATGACTTCAACAGAGATCT
 GAGAGACCGTCTAGAGACTGCCAACAAGCAGCTGGCAGAGAAGGAGTACGAGGGTCCGAGGACACCAGG
 AAGACCATCTCGCAGCTCTTTGCCAAACATAAAGAAAACCAGCGGGAGAAGGAGAAGCTGGAAGCTGAGC
 TGGCTACTGCCGTTCTACCAATGAAGACCAAAGGCGACACATTGAAATCCGAGACCAGGCATTGAGCAA
 TGCCCAGGCGAAGGTGGTGAAGCTGGAAGAAGAGCTGAAAAGAAGCAAGTGTACGTAGATAAGGTGGAG
 AAGATGCAGCAGGCCCTTGTGCAGCTCCAGGCCCTGTGAGAAGCGTGAGCAGCTGGAACACCCGCTCC
 GGACACGCTTTGGAGAGGGAAGTGAATCCCTTGAATCCAGCAGCGCCAGGGCACTCCAGCCCACTAA
 TGCTTTCAGAAATACAATGCCGCTGCACTGATGGAGCTCCTCCGGGAGAAGGAAGAGAGAATCTGGCCCTG
 GAAGCAGATATGACCAAGTGGGAGCAAAAAGTATTTGGAAGAGAATGTGATGAGACACTTTGCTCTGGATG
 CTGCTGCAACTGTGGCTGCACAGAGAGACACAACAGTCATTAGCCACTCTCCTAACACCAGCTATGACAC
 AGCCTTAGAGGCCCGCATCCAGAAGGAAGAGGAAGAAATCCTGATGGCCAACAAGCGTTGCTTGACATG
 GAAGGAAGGATTAAGACCCTCCATGCCAGATTATTGAAAAGGATGCCATGATCAAGGTGCTGCAGCAGC
 GCTCCAGAAGGAGCCGAGTAAACAGAGCAACTCTCATCCATGCGGCCAGCAAAGTCTCTGATGCCAT
 TTCCAATGCTGGATCAGGCTCCTTGCATACTCCTCTACCTTGACTGGTGCGCCATTATGGAGGAGAAG
 CGTGATGACAAGAGCTGGAAGGGGAGCCTAGTTAAGGAAAAGGAAAGCAACAGAAGCAAAGGCACAGTGA
 CAGACTTAGAAAAGTGCCTGACTCTGTTACACACAGCAAGGAAAAGGACAAATGGTCCAGGTTCTAGAGA
 GGAGAATTTGGAGTCCCCCTCTCAATGAATTAGATTTA

ACGCGTACGCGGCCGCTCGAG – GFP Tag – GTTTAA

Protein Sequence:

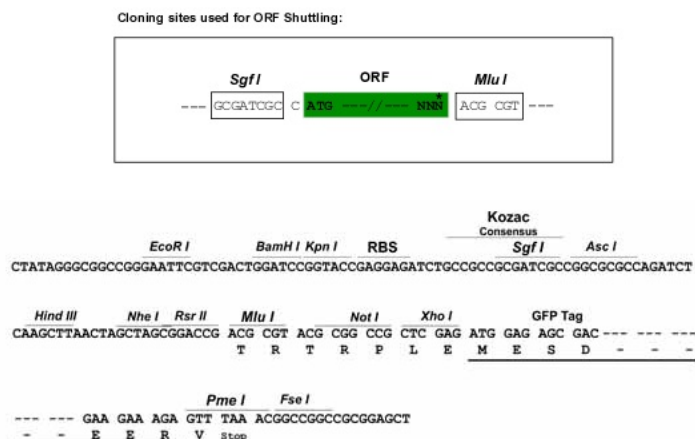
>MG209494 representing BC057638
 Red=Cloning site Green=Tags(s)

MEHRGPPPEYFPKGVPSQSVVCKSQEPGHFYSEHRLNQGRTEGQLMRYQHPPEYGAARATQDISSLSS
 ARNSQPHSPTSSLTAGASSLPLQLSPPSTRLLPGQHLVPNQGDHSAHL SRHQHLLSSQSHQGDHYRHAQ
 ASLTSAQQPGEAYSAMPRAQSSASYQMPADPFAIVSRAQQMVEILSDENRNLRQELDGCYEVARLQK
 VETEIQRVSEAYENLVKSSSKREALEKAMRNKLEGEIRRMHDFNRDLRDRELETANKQLAEKEYEGSEDTR
 KTI SQLFAKHKENQREKEKLEAELATARSTNEDQRRHIEIRDQAL SNAQAKVVKLEELKKKQVYVDKVE
 KMQQALVQLQAACEKREQLERHLRTRLERELSLRIQQRQNSQPTNASEYNAAALMELLREKEERILAL
 EADMTKWEQKYLEENVMRHFALDAAATVAAQRDTTVISHPNTSYDTALEARIQKEEEEILMANKRCLDM
 EGRIKTLHAQIIEKDAMIKVLQQRSRKEPSKTEQLSSMRPAKSLMSISNAGSGLLAYSSTLTGAPIMEEK
 RDDKSWKGLGKEKESNRSGKVTDLSEVLTLTARKRDNGPGSREENLESPLSMELDL

TRTRPLE – GFP Tag – V

Restriction Sites:

Sgfl-MluI

Cloning Scheme:


ACCN: BC057638

ORF Size: 1860 bp

OTI Disclaimer: The molecular sequence of this clone aligns with the gene accession number as a point of reference only. However, individual transcript sequences of the same gene can differ through naturally occurring variations (e.g. polymorphisms), each with its own valid existence. This clone is substantially in agreement with the reference, but a complete review of all prevailing variants is recommended prior to use. [More info](#)

OTI Annotation: This clone was engineered to express the complete ORF with an expression tag. Expression varies depending on the nature of the gene.

Components: The ORF clone is ion-exchange column purified and shipped in a 2D barcoded Matrix tube containing 10ug of transfection-ready, dried plasmid DNA (reconstitute with 100 ul of water).

Reconstitution Method:

1. Centrifuge at 5,000xg for 5min.
2. Carefully open the tube and add 100ul of sterile water to dissolve the DNA.
3. Close the tube and incubate for 10 minutes at room temperature.
4. Briefly vortex the tube and then do a quick spin (less than 5000xg) to concentrate the liquid at the bottom.
5. Store the suspended plasmid at -20°C. The DNA is stable for at least one year from date of shipping when stored at -20°C.

RefSeq: [BC057638.1](#)

RefSeq Size: 2405 bp

RefSeq ORF: 1862 bp

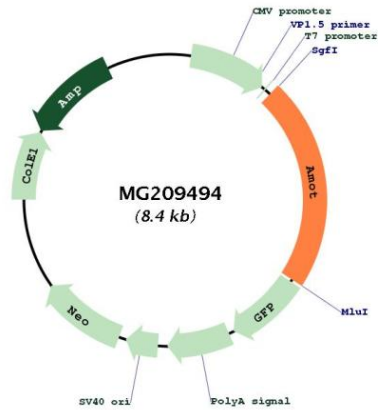
Locus ID: 27494

Cytogenetics: X F2

Gene Summary:

Plays a central role in tight junction maintenance via the complex formed with ARHGAP17, which acts by regulating the uptake of polarity proteins at tight junctions. Appears to regulate endothelial cell migration and tube formation. May also play a role in the assembly of endothelial cell-cell junctions (By similarity).[UniProtKB/Swiss-Prot Function]

Product images:



Circular map for MG209494