

Product datasheet for **MG209491**

Vps52 (BC063329) Mouse Tagged ORF Clone

Product data:

Product Type:	Expression Plasmids
Product Name:	Vps52 (BC063329) Mouse Tagged ORF Clone
Tag:	TurboGFP
Symbol:	Vps52
Synonyms:	D130068D18, ARE1
Mammalian Cell Selection:	Neomycin
Vector:	pCMV6-AC-GFP (PS100010)
E. coli Selection:	Ampicillin (100 ug/mL)



[View online »](#)

ORF Nucleotide Sequence:

>MG209491 representing BC063329
 Red=Cloning site Blue=ORF Green=Tags(s)

TTTTGTAATACGACTCACTATAGGGCGGCCGGAATTCGTCGACTGGATCCGGTACCGAGGAGATCTGCC
 GCC**CGGATCGCC**

ATGGCAGCCGCAGCGACCATGGCGGCCGCTGCCGGGAGCTGGTGTTCGGGCTGGGGCCTCAGATGTGG
 AGGAGGAGGAGGGCCCGCTGGGGGGGGTTCTGGACTCCAAGAACCCTACAACCTGGAGAGTTGGACAT
 CACCTCTGATGAATTCATCTTGATGAAGTGGATGTTACATCCAGGCAAACCTGGAGGATGAGTTAGTG
 AAGGAAGCTCTAAAACGGGTGTGGATCTTCGACACTATCAAAGCAGGTGGAGCTGGAGCTGCAGCAGA
 TTGAGCAGAAAGTCAATCCGGGACTATATCCAAGAGAGTGAGAACATAGCGTCTCTGCACAATCAGATCAC
 GGCCTGTGACGCCGCTCTGGAGCCAGGTTCTGGAGCAGCTGCAGGAGCTGGATGCCAAGGCAGCCGCG
 GTGAGAGAGCAGGAGGCTATGGGCACCGCTGCCTGTGCTGACGTGAGGAGTGTGGACCGGCTCCGGG
 TCAAGGCAGTGACGAAGATCCGGGAGTTCATTCTCCAGAAGATCTACTCCTTCAGAAAGCCCATGACCAA
 CTACCAGATCCCCAGGCGGCCCTGCTGAAGTACAGGTTTTCTATCAGTTCCTGCTGGCAATGAGCGT
 GCTACAGCCAAAGAGATCAGGGATGAGTACGTAGAGACGCTGAGCAAGATCTACCTGTCTACTACCGAT
 CCTATGTGGGGCGGCTCATGAAAGTGCAGTACGAGGAAGTTGCTGAGAAAAGCAGCCTAATGGGTGTTGA
 AGACACAGCAAAGAAAGGCTTCTTCTCGAAGCCGTCCTCCGAAGCAGGAACACCATCTTTACCCTTGGC
 ACTCGTGGTACTGTATCTCACCAGGCGGAGCTGGAGGCCCCATCCTAGTGCCCATACTGCCAACGTCG
 GAGAGCAGAGGTATCCATTCGAAGCGCTTCCGAGCCAGCACTATGCCTCCTCGACAATCTTGCCG
 TGAATATCTTTTCATCTGTGAATTTTCATCGTGTCTGGCCCGGCTGCACATGACCTGTTCCACGCCGTC
 ATGGGCCGACGCTCTCCATGACACTGAAACACCTGGAGTCTACCTGGCTGACTGCTACGACGCCATTG
 CTGTTTTCTCTGTATCCACATTTGTTCTCCGGTCCGCAACATTGCGAGGAAGAGGGAGCTCCCTGCCCT
 GGACAGGTACTGGGAGCAGGTGCTTGCCTTGTGTCGCTCGGTTTGGAGCTGATCCTGGAGATGAATGTC
 CAGAGTGTCCGAGCACTGACCCAGCGCCTTGGGGACTGGCACTCGGCCCACTATATCACACGCC
 GCTATGCTGAGTTCTCTCTGCACTTGTGAGCATCAACCAGACGATCCCCAATGAACGCAGCTGCAGCT
 CCTGGGACAGCTCCAGGTGGAGGTGGAGAAATTTGTCCTCCGAGTGGCTGCAGAGTTCTCTCCAGGAAG
 GAGCAGCTTGTGTTCTGATCAACAATGACATGATGCTCGGGGTGCTGATGGAGCGGGCTGCTGATG
 ACAGCAAAGAGGTGGAGAGTTCCAGCAGCTGCTCAATGCTCGGACACAGGAGTTCATTGAGGAGCTGCT
 GTCTCCCCCTTCGGGGTCTGGTGGCATTGCTGAAGGAGGCTGAAGCCTTGATTGAGCGTGGCAGGCT
 GAGCGGCTCCGAGGGAGGAAGCCGAGTCACTCAGCTGATCCGTGGCTTTGGTAGTTCCTGGAAGCGCT
 CAGTGGAGTCCCTGAGTCAAGATGTAATGCGAAGTTTTACCAACTCCGAAATGGAACCAGCATCATCCA
 GGGGCACTGACCCAGCTGAAGAAACACAAGCCGAAGCTTC

ACGCGTACGCGGCCGCTCGAG – GFP Tag – GTTTAA

Protein Sequence:

>MG209491 representing BC063329
 Red=Cloning site Green=Tags(s)

MAAAATMAAAARELVLRAGASDVEEEGPLGGGSGLQEPLQLGELDITSDEFILDEVDVHIQANLEDELV
 KEALKTGVDLRHYSKQVELELQQIEQKSIQDYIQESENIAASLHNQITACDAVLEPRFLEQLQELDAKAAA
 VREQEAMGTAACADVRLDRLRVKAVTKIREFILQKIYSFRKPMNTNYQIPQAALLKYRFFYQFLGNER
 ATAKEIRDEYVETLSKIYLSYYRSYVGRMLMKVQYEEVAEKDDLGMVEDTAKKGFVSKPSLRSRNTIFTLG
 TRGTVISPAELEAPILVPHTAQRGEQRYPFALFRSQHYALLDNSCREYLFICEFFIVSGPAAHDLFHAV
 MGRTLSMTLKHLESYLADCYDAIAVFLCIHIVLRFNRNIAGKRDVPALDRYWEQVLLALLWPRFELILEMNV
 QSVRSTDPQRLGGLDTRPHYITRRIAESSALVSNQIPNERTLQLLQQLQVEVENFVLRVAAEFSSRK
 EQLVFLINNYDMLGVLMERAADDSSKEVESFQQLLNARTQEFIEELLSPFPGGLVAFVKEAEALIERGQA
 ERLRGEEARVTQLIRFGSSWKASVESLSQDVMRSFTNFRNGTSIIQGALTQLKKHKPNF

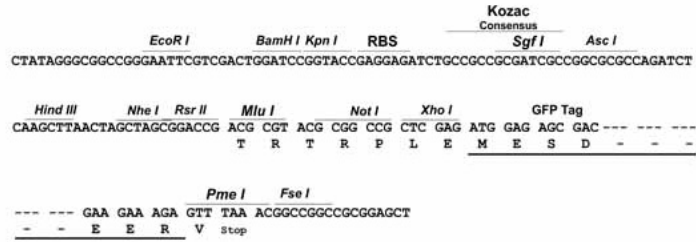
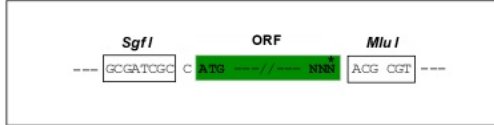
TRTRPLE – GFP Tag – V

Restriction Sites:

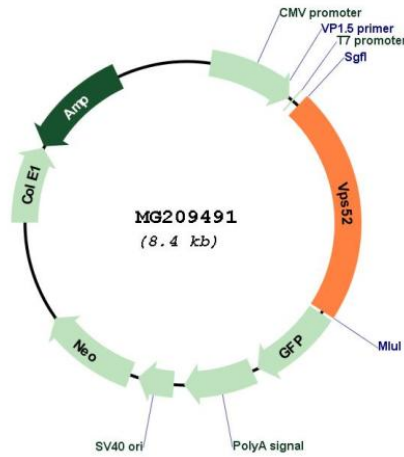
Sgfl-MluI

Cloning Scheme:

Cloning sites used for ORF Shutting:



Plasmid Map:



ACCN: BC063329
 ORF Size: 1860 bp

OTI Disclaimer:	The molecular sequence of this clone aligns with the gene accession number as a point of reference only. However, individual transcript sequences of the same gene can differ through naturally occurring variations (e.g. polymorphisms), each with its own valid existence. This clone is substantially in agreement with the reference, but a complete review of all prevailing variants is recommended prior to use. More info
OTI Annotation:	This clone was engineered to express the complete ORF with an expression tag. Expression varies depending on the nature of the gene.
Components:	The ORF clone is ion-exchange column purified and shipped in a 2D barcoded Matrix tube containing 10ug of transfection-ready, dried plasmid DNA (reconstitute with 100 ul of water).
Reconstitution Method:	<ol style="list-style-type: none">1. Centrifuge at 5,000xg for 5min.2. Carefully open the tube and add 100ul of sterile water to dissolve the DNA.3. Close the tube and incubate for 10 minutes at room temperature.4. Briefly vortex the tube and then do a quick spin (less than 5000xg) to concentrate the liquid at the bottom.5. Store the suspended plasmid at -20°C. The DNA is stable for at least one year from date of shipping when stored at -20°C.
RefSeq:	BC063329.1
RefSeq Size:	2460 bp
RefSeq ORF:	1862 bp
Locus ID:	224705
Cytogenetics:	17 B1
Gene Summary:	Acts as component of the GARP complex that is involved in retrograde transport from early and late endosomes to the trans-Golgi network (TGN). The GARP complex is required for the maintenance of the cycling of mannose 6-phosphate receptors between the TGN and endosomes, this cycling is necessary for proper lysosomal sorting of acid hydrolases such as CTSD. Acts as component of the EARP complex that is involved in endocytic recycling. The EARP complex associates with Rab4-positive endosomes and promotes recycling of internalized transferrin receptor (TFRC) to the plasma membrane.[UniProtKB/Swiss-Prot Function]