

Product datasheet for **MG209489**

Rhot2 (NM_145999) Mouse Tagged ORF Clone

Product data:

Product Type:	Expression Plasmids
Product Name:	Rhot2 (NM_145999) Mouse Tagged ORF Clone
Tag:	TurboGFP
Symbol:	Rhot2
Synonyms:	Arht2; Miro2
Mammalian Cell Selection:	Neomycin
Vector:	pCMV6-AC-GFP (PS100010)
E. coli Selection:	Ampicillin (100 ug/mL)



[View online »](#)

ORF Nucleotide Sequence:

>MG209489 representing NM_145999
 Red=Cloning site Blue=ORF Green=Tags(s)

TTTTGTAATACGACTCACTATAGGGCGGCCGGAATTCGTCGACTGGATCCGGTACCGAGGAGATCTGCC
 GCC**GCGATCGCC**

ATGCGGCGGATGTTTCGATCCTGCTGCTGGGCGAGGCCAGGTGGGAAGACGTCTCTGATCCTGTGCG
 TGGTTCGGCGAGGAGTTTCCCGAGGAGTCCCTGCCGCGCGGAGGAGATAACCATCCCCGCCGACGTCAC
 CCCGGAGAAGGTGCCCACTCATATCGTGGATTACTCAGAAGCGGAGCAGACAGAGGAAGAACTTCAGGAG
 GAGATCCACAAGGCAAATGTAGTGTGTGGTGTACGATGTGTCTGAGGAGACCACCATTGAGAAGATCC
 GAACCAAGTGGATCCCGCTTGTGAATGGCAGGACGGCGACAGGGCCAGGTTGCCCATCATCCTGGTGGG
 CAATAAGTCTGACCTGCGGCCGGGAGTACCATGGAGGCTGTGCTGCCCATCATGAGCCAGTTTCTGAG
 ATAGAGACCTGCGTGGAGTGTTCAGCCAAGCACTTGAGGAATATCTCAGAGCTGTCTACTATGCCCAGA
 AGGCTGTTCTGCATCCCACAGCCCCCTTTATGACCCTGAGGCCAAACAGCTCAGGCCTGCATGCCCCA
 GGGCTCACACGCATCTCAGGCTGTGCGACCAGGACCGAGACCAGGGCTGAGCGACGAGGAACCTAAT
 GCCTTCCAGAAGTCTGCTTTGGCCATCCCTGGCCCCACAGGCCCTGGAGGATGTGAAGAGGGTGGTGT
 GCAAGAACGTGTGAGGTGGTGTGCAGAATGACCGGCTGACCCCTGGAAGGCTTCTCTTCTGAACACACT
 CTTTCATCCAGCGTGGCCGGCAGGAGACCAGTGGACCATCCTGCGGCGCTTTGGTTACAGTGACTCACTG
 GAGCTAACGCCGACTACCTCTATCCAGCGCTCCATGTCCCCCTGGCTGCAGCAGAGACTCAACCATC
 GTGGCTACCAGTTTGTGACGCGGATGTTTCGAGAAGCATGACCAGGACCATGATGGTGTCTCTCGCCAC
 GGAACACAGAATCTCTCAGTGTGTTCTCAGGTGCTCCATGGGGCCCTGAACTTTACACACAGTCCCC
 ACTCAGGCTGGCTGTGCTGCTTTGCATGGCTATCTCTGCCAGTGGACCCCTCATGACCTACTTGGATGTC
 AGCAATGCCTTGACACACTTGGTACCTGGGTTACCTACCCTCTGTGAACAGGACTCTCAGGCACAGGC
 TATCACAGTTACCCGCGAGAAGAAGCTGGACCAGGAGAAAGGGCAGACACAGCGCAGCGTTCTCATGTGT
 AAGGTGCTGGGAGCCCGAGGAGTGGCAAGTCAAGCCTTCTTGAAGCCTTCTTGGCAACAGCCTTGGGG
 AAGCCAGGACCCCTGAGAAATCCCCCTGCATACCATCAATACAGTGCGGGTCAACGGGCAGGAGAA
 GTACCTGATTCTGTGGAAGTGAATGCTGACAGCCTGCTGGACACCTCTCTAGACACTACCTGTGATGTC
 GCCTGCTTAATGTTTACAGCAGTATCCCAAGACCTTTGTACACTGTGCTACCATATAAAGCCTTATT
 ACATGGATGGGCAGACCCCTGCCTCTTATTGCCTCAAAGCTGATCTCCCTGAAGGTGTTGCCCCCC
 AGGGCTGTACCCGCTGAGTTCTGCCGGAGGCACCGGCTGCCTGCCCCAGCTTCTTCTCCTGCTGGGA
 CCCGCAATGCCACAGCAGATGTCTTTACCAACTTGCTACCATGGCCACTTTCCACACCTGGTGCACA
 CAGAGCTGCACCCACCTCTTCTGGCTCCGAGGAGTGTGGTGGCTGTGGCACGGCTGTGGCTGCTGT
 CCTTAGCTTCTACTATACAGGGTCTAGTGAAGAGCCGA

ACGCGTACGCGGCCGCTCGAG - GFP Tag - GTTTAA

Protein Sequence:

>MG209489 representing NM_145999
 Red=Cloning site Green=Tags(s)

MRRDVRILLLGEAQVGTKSLILSLVGEFPEEVPARAEEITIPADVTPEKVPTHTIVDYSEAEQTEEELQE
 EIHKANVVCVVYDVSEETIEKIRTKWIPLVNGRTATGPRLPIILVGNKSDLRPGSTMEAVLPIMSQFPE
 IETCVECSAKHLRNISELFYAQKAVLHPTAPLYDPEAKQLRPACAQALTRIFRLSDQDRDHGLSDEELN
 AFQKSCFGHPLAPQALEDVKRVCKNVSGGVQNDRLTLEGFLFLNTLFIQRGRHETTWTILRRFGYSDSL
 ELTPDYLYPALHVPPGCSTELNHRGYQFVQRMFEKHDQDHDGVLSPTELQNLFSVFSGAPWGPPELLHTVP
 TQAGCLPLHGYLCQWTLMTYLDVQQCLAHLGYLGYPTLCEQDSQAQAITVTREKLDQEKGTQRSVLMC
 KVLGARGVGS AFLQAFLGNSLGEARDPPEKFPPLHTINTVRVNGQEKYLILCEVNADSLDTSDDTCDV
 ACLMFDSSDPKTFVHCATIKRYMDGQTPCLFIASKADLPEGVAPPGLSPAEFRRHRLPAPASFSLCLG
 PAMPSTDVFTQLATMATFPHLVHTELHPTSFWLRGVLVAVGTAVAAVLSFSLYRVLVKS

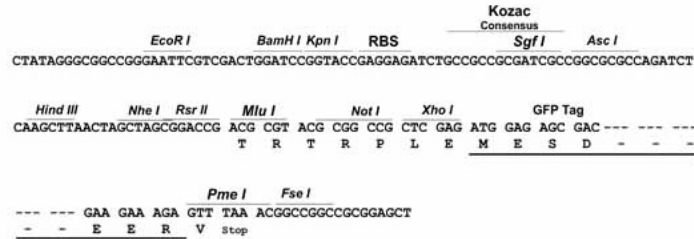
TRTRPLE - GFP Tag - V

Restriction Sites:

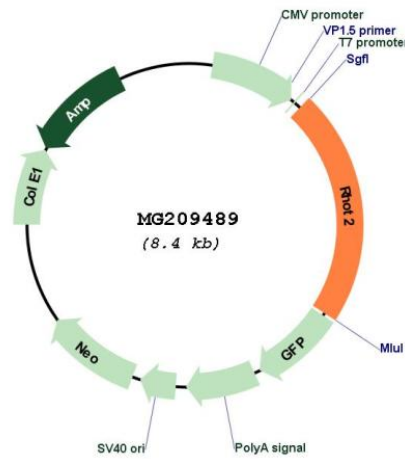
SgfI-MluI

Cloning Scheme:

Cloning sites used for ORF Shutting:



Plasmid Map:



ACCN: NM_145999
 ORF Size: 1860 bp

OTI Disclaimer:	The molecular sequence of this clone aligns with the gene accession number as a point of reference only. However, individual transcript sequences of the same gene can differ through naturally occurring variations (e.g. polymorphisms), each with its own valid existence. This clone is substantially in agreement with the reference, but a complete review of all prevailing variants is recommended prior to use. More info
OTI Annotation:	This clone was engineered to express the complete ORF with an expression tag. Expression varies depending on the nature of the gene.
Components:	The ORF clone is ion-exchange column purified and shipped in a 2D barcoded Matrix tube containing 10ug of transfection-ready, dried plasmid DNA (reconstitute with 100 ul of water).
Reconstitution Method:	<ol style="list-style-type: none">1. Centrifuge at 5,000xg for 5min.2. Carefully open the tube and add 100ul of sterile water to dissolve the DNA.3. Close the tube and incubate for 10 minutes at room temperature.4. Briefly vortex the tube and then do a quick spin (less than 5000xg) to concentrate the liquid at the bottom.5. Store the suspended plasmid at -20°C. The DNA is stable for at least one year from date of shipping when stored at -20°C.
RefSeq:	NM_145999.3
RefSeq Size:	2825 bp
RefSeq ORF:	1863 bp
Locus ID:	214952
UniProt ID:	Q8JZN7
Cytogenetics:	17 12.93 cM
Gene Summary:	Mitochondrial GTPase involved in mitochondrial trafficking. Probably involved in control of anterograde transport of mitochondria and their subcellular distribution (By similarity). [UniProtKB/Swiss-Prot Function]