

## Product datasheet for **MG209468**

### **Gpr123 (BC056493) Mouse Tagged ORF Clone**

#### **Product data:**

Product Type:	Expression Plasmids
Product Name:	Gpr123 (BC056493) Mouse Tagged ORF Clone
Tag:	TurboGFP
Symbol:	Gpr123
Synonyms:	2900059M17Rik; D7Ertd680e; Gpr123
Mammalian Cell Selection:	Neomycin
Vector:	pCMV6-AC-GFP (PS100010)
E. coli Selection:	Ampicillin (100 ug/mL)



[View online »](#)

**ORF Nucleotide Sequence:**

>MG209468 representing BC056493  
 Red=Cloning site Blue=ORF Green=Tags(s)

TTTTGTAATACGACTCACTATAGGGCGGCCGGAATTCGTCGACTGGATCCGGTACCGAGGAGATCTGCC  
 GCC**CGGATCGCC**

ATGACTCAGTGGGATTTGAAGACTGTCCTCTCCCTGCCCCAGTACCCAGGGGAGTTCCTGCATCCTGTGG  
 TGTATGCCTGCACCGCGTCATGCTCCTGTGTCTCCTTGCTCTGTGCATCACCTACATCTTGCATCAGAG  
 TGCCATCCGATAAGCCGAAAGGCCGGCAGCAGCTCCTCAACTTCTGCTTCCACGCCGCTCGACCTTC  
 ACCGTGTTTGTGGTGGCATCAATCGCACCCAACACCCCATCCTGTGCCAAGCAGTGGGCATTGCTCTGC  
 ACTATTCACGCTTTCTACCATGCTGTGGATCGGTGTGACTGCTAGGAACATCTACAAACAGGTGACCAA  
 GAAGGCCCTGCCATGTCTGGAGCAGACCAGCCACCGTACCCTAAGCAGCCCTTGCTCAGTTTCTACCTC  
 ATCAGCGGAGGGTCCCTTTCATCATCTGTGGGTACAGCTGCCACAAACATCAGAAATATGGCACCG  
 AGGATGAGGACGTGGCATACTGCTGGATGGCTGGAAACCAGCCTGGGTGCGTTCTATGGCCGGCTGC  
 CTTCAATTGCCCTGGTACCTGCGTGTACTTCTCTGCACCTACGTGCAGCTGCGGCGTCAACCGGAGCGC  
 AGGTATGAGCTCAGAGAGCGCACGGAGGAGCAGCAGCAGCTGGCTGTGCCAGAGAGCGGCCATCGCCACG  
 GAGTCCGTCGCCGGACCCACCCACCTGTGATGCCCTGACTGCCTCGCAGCTGCAGAACGAGCATTCCCTT  
 CAAGGCTCAGCTTCGTGCCGCTGCCTTCACACTGTTTCTGTTACAGCTACATGGACCTTTGGGGCCCTG  
 GCTGTGTCTCAGGGCCACTTCTGGACATGATCTTCAGCTGTCTGTACGGCGCCTTCTGCGTGACTGG  
 GACTCTTTGTACTTATCCATCACTGCGCAAGCGGGAGGAGCTGTGGCAGTGTGGTGGTCTGTGCC  
 TTCCCGGGGAGACACCTCCACCACCAAGCCCGGCCCATCTACACTCGATGCCAACGGGGATGCGCTG  
 GGCATACGGCCTGCCTGCAGGACTCACCATGCCCTGGGAACTCAGAGGTTTTGGCCATCCACCAGCCA  
 GCCACTGCAAGATGACCAACCTGCAGGCTGCCAGGGCCATGTCAGCTGTCTGTCACTGCCACCCCGTG  
 CTGTGCCAAGATGCACTGTGAGCAGTTAATGGAGGAGGAGCGGCCACATCCACATGGCTGAGGAGGAC  
 GTCTACCCACACGATCCCCACCTGCATGACCCTCACCTGCACAGGTGCCTCAAGGGCAGAATAAGTCCC  
 ACTACTTCAGCCGGCACCAGGCAGCTGCGGCTGAGAGGGAGTATGCTTACCACATCCCCTCCAGCCTGGA  
 TGGCAGTCCCCACAGTTCAGTTTCGAGAGCCCCACCAGCTCTCTGGAGGGCCCAATGGGGATGCACACA  
 TTGGCCTGCTGTGCCAGGCTGACCCCTTCCCATGGTCAGCCAGCCTGAGGGTGGAGACACAAGCCCTG  
 GGCTCTATGGCTGCCCCCCACCTATCCCAGGCCCTGCCACTTGGAGATGCTACGAAGGACACAGTCC  
 CTGCCCTTTGGGGCCCCAGCCAGAATGGGCTGCTCCAGGGTATGTTTCGAGAAGCCTGCCATTTGGCA  
 CTGATGGGACAGGGAACATCCGAACAGGACCCTGGAAAAATGAACTACAGTGTAGCCAGGTTGGGAACA  
 CAACTTCTTCGCCAGTGCCACCAGTGTCCCTGGAGGAGCTTTCAGAGCAGGGAGTGGCCCTTGTATGT  
 GGACTGGAAGGGCCATCAATGACCAAGTGGTTC

**ACGCGTACGCGGCCGCTCGAG** – GFP Tag – GTTTAA

**Protein Sequence:**

>MG209468 representing BC056493  
 Red=Cloning site Green=Tags(s)

MTQWDLKTVLSLPQYPGEFLHPVYACTAVMLLCLLASVITYILHQSAIRISRKGRHALLNFCFHAALTF  
 TVFAGGINRTQHPILCQAVGIALHYSTLSTMLWIGVTARNIYKQVTKKALPCPGADQPPYPKQPLLRFYI  
 ISGGVPIICGVTAATNIRNYGTEDEDVAYCWMWEPVSLGAFYGPAAFIALVTCVYFLCTYVQLRRHPER  
 RYELRRETEEQRLAVPESGHRHGVRPGTPPTCDALTASQLQNEHSFKAQLRAAAFTLFLFTATWTFGAL  
 AVSQGHFLDMIFSCLYGAFVTLGLFVL IHHCAKREDVWQCWWSCCPSRGDTSTTKPGAHTLDANGDAL  
 GHTACLQDSPCPGKLRGFGHPPASHCKMTNLQAAQGHVSCLSPATPCCAKMHCEQLMEEEAAHIHMAEED  
 VYPHDPHLHDPHLHRCLKGRKSHYFSRHQAAAEREYAYHIPSSLDGSPHSSRSESPSSLEPGMGMHT  
 LACCAQADPFPMVVSQPEGDTSPGLYGCPTYPQALPTWRCYEGHSPCLLGAPARMGCSRVMFEKACHLA  
 LMGQGTSEQDPGKMKLQCSQVGNNTSSVPPRVPVGGASEQGVALCYVDWKGHQMTKWF

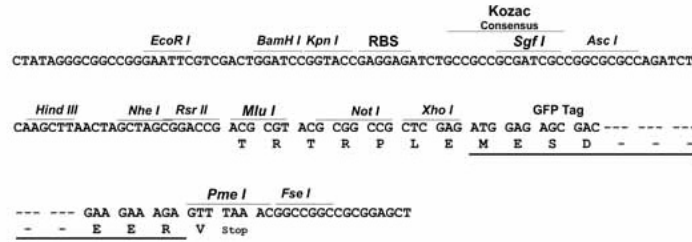
**TRTRPLE** – GFP Tag – V

**Restriction Sites:**

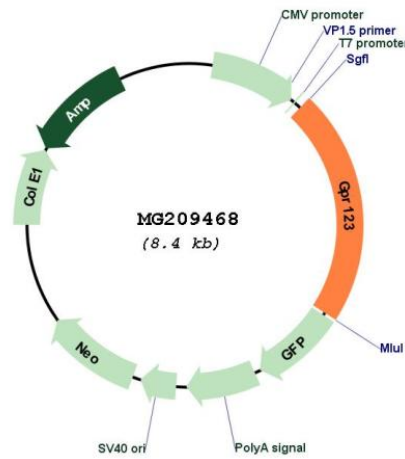
SgfI-MluI

Cloning Scheme:

Cloning sites used for ORF Shutting:



Plasmid Map:



ACCN: BC056493  
 ORF Size: 1856 bp

<b>OTI Disclaimer:</b>	The molecular sequence of this clone aligns with the gene accession number as a point of reference only. However, individual transcript sequences of the same gene can differ through naturally occurring variations (e.g. polymorphisms), each with its own valid existence. This clone is substantially in agreement with the reference, but a complete review of all prevailing variants is recommended prior to use. <a href="#">More info</a>
<b>OTI Annotation:</b>	This clone was engineered to express the complete ORF with an expression tag. Expression varies depending on the nature of the gene.
<b>Components:</b>	The ORF clone is ion-exchange column purified and shipped in a 2D barcoded Matrix tube containing 10ug of transfection-ready, dried plasmid DNA (reconstitute with 100 ul of water).
<b>Reconstitution Method:</b>	<ol style="list-style-type: none"><li>1. Centrifuge at 5,000xg for 5min.</li><li>2. Carefully open the tube and add 100ul of sterile water to dissolve the DNA.</li><li>3. Close the tube and incubate for 10 minutes at room temperature.</li><li>4. Briefly vortex the tube and then do a quick spin (less than 5000xg) to concentrate the liquid at the bottom.</li><li>5. Store the suspended plasmid at -20°C. The DNA is stable for at least one year from date of shipping when stored at -20°C.</li></ol>
<b>RefSeq:</b>	<a href="#">BC056493</a> , <a href="#">AAH56493</a>
<b>RefSeq Size:</b>	4067 bp
<b>RefSeq ORF:</b>	1856 bp
<b>Locus ID:</b>	52389
<b>Cytogenetics:</b>	7 84.89 cM