

Product datasheet for **MG209453**

Mtmr6 (NM_144843) Mouse Tagged ORF Clone

Product data:

Product Type:	Expression Plasmids
Product Name:	Mtmr6 (NM_144843) Mouse Tagged ORF Clone
Tag:	TurboGFP
Symbol:	Mtmr6
Synonyms:	4022440C11Rik; AI428804; AU041072
Mammalian Cell Selection:	Neomycin
Vector:	pCMV6-AC-GFP (PS100010)
E. coli Selection:	Ampicillin (100 ug/mL)



[View online »](#)

ORF Nucleotide Sequence:

>MG209453 representing NM_144843
 Red=Cloning site Blue=ORF Green=Tags(s)

TTTTGTAATACGACTCACTATAGGGCGGCCGGAATTCGTCGACTGGATCCGGTACCGAGGAGATCTGCC
 GCC**CGGATCGCC**

ATGGAGCACATCCGGACAACCAAGTTGAACAAGTAAAGTTACTTGACCGGTTTAGTACCAACAACAAGT
 CACTGACAGGAACACTGTATCTTACGGCCACACACCTATTATTTATTGACGCTCAGCAAAAAGAAACCTG
 GATACTACACCACCATATTGCCTCTGTGGAGAACTTGCTCTGACCACTTCTGGATGCCACTTGTGATT
 CAGTGAAGAAGTTCAGGATTGTGCATTTATTGTTCCAGGGAAAGAGATTGCCACGATATTTATAACT
 CTCTCTGCGACTATCAAAAAGCAAAAATGAAGATCTCTATGCCTTCTTTAATCCCAAGCAAAA
 TGATACTGAACGACGGAATGTTGGCAGCTTATTGACCTTGCTGCGGAGTATGAGAGGATGGGAGTGCC
 AATGCAAACTGGCAACTGTCGGATGCCAACCGAGAGTACAAGGTCTGTGAGACTTATCCAGAGAGCTGT
 ATGTTCTCGGACAGCTAGCCGGCCGGTATCGTGGGCAGTTCCAACCTCCGGAGCAAGGGCAGACTTCC
 GGTCTATCTACTGCCGCGAGGCACTGAGGCTGCCATTTGTCGATGTAGTCAGCCATTGTCAGGCTTC
 AGTGCCAGGTGCCTAGAGGATGAGCATTGCTTCAAGCCATTAGTAAAGCCAACCCAGGAAACCGCTACA
 TGTATGTTGTTGGATACCAGGCCAAGCTCAATGCAATAGCTAACAGAGCAGCTGGAAAAGGTTATGAAAA
 TGAAGACAATATTCTAATATTAGATTTAGTTGTTGGAATAGAAAATATTCATGTGATGAGATCCAGC
 CTTCAGAAATTACTGGAAGTGAATGGTAGCAAGGGGCTTCTGTCAATGATTTCTACTCTGGTTTGGAAA
 GTTCAGGATGGCTTCGCCATATCAAGGCTGTTTGGATGCTGCAATCTTCTTAGCCAAAGCAATAGTGGT
 TGAAGATGCAAGTGTGTTGGTCCACTGTCCGATGGGTGGGACAGGACCTCCAAGTGTGCTCCCTCGGC
 TCACTGTTGTTGGATTCCTACTACAGGACAATGAAAGGATTCATGGTTTTAATAGAAAAAGATTGGATAT
 CATTTGGGCATAAATTTTCAGAGAGGTGTGGCCATTTGGATGGAGACCCGAGGAGGTCTACCAGTGT
 CACTCAGTTCTTGAGTGTGCTGGCACCTGACTCAGCAGTTCCACAAGCCTTCGAGTTCAACGAAGCG
 TTTCTTCTCAGATCCATGAGCACATTCATTCATGCCAATTTGGGAACCTCCTTGCAACTGTGAGAAGG
 AGAGAGAGGAACTCAGGTTAAAGGAGAAAACTTACTCCCTGTGGCCTTTTCTTTGGATGACAAAAAGAA
 GTACTTAAATCCTCTCTACAGTTCCAAATCTCAGAGACTGACAGTCTTGAGCCAAATACAGCCTTTTC
 AATTTTAAAGTTTGGAGAAACATGTACCACCAGTTTGTGCGACGCTCCATCCTCGGCAGTCTGTGCTGA
 GCATAATTATGAATATGAATGAGCAAAGCAAGCAGTTAGAGGAAGACATTAAGACCTCGAGGCTAAAT
 TAAGCAATGCAAAAATGGCATCCTAACGAAGGAGTTGCTGCATGCTGTCCACCCTGAATCACCTGCCCTG
 AAAACCTCGCTGTGCTCAAAGAGCCGAGTCTGCTTCCCGTGAAGGACACACTCCGAGCTATAGAGGGCA
 GCAGCCCAGCAGATAATCGCTACTGTGACTATGCCGAGGAATTTCTAAGTCGGAGCCTACCGTGGTCAG
 CTTGGAGTACGGGTGGCCAGAATGACTTGT

ACGCGTACGCGGCCGCTCGAG - GFP Tag - GTTTAA

Protein Sequence:

>MG209453 representing NM_144843
 Red=Cloning site Green=Tags(s)

MEHIRTTKVEQVKLLDRFSTNNKSLTGTYL TATHLLFIDAQQKETWILHHHIASVEKLALTTSGCPLVI
 QCKNFRIVHFIVPRERDCHDIYNSLLQLSKQAKYEDLYAFSYNPKQNDTERRNGWQLIDLAAEYERMGP
 NANWQLSDANREYKVCETYPREL YVPRASRPVIVGSSNFRSKGRLPVL SYCRQGTEAAICRCSQPLSGF
 SARCLEDEHLLQAI SKANPGNRYMYVVDTRPKLNAIANRAAGKGYENEDNYSNIRFQFVGIENIHVMRSS
 LQKLLLEVNGSKGLSVNDFYSGLESSGWLRIKAVLDAAI FLAKAIVVENASVLVHCSGDGWDRTSQC
 SLG SLLLLDSYRTMKGMVL IEKDWISFGHKF SERCGHLDGDPREVSPVFTQFLECVWHLTQQFPQAFEFNEA
 FLLQIHEHIHSCQF GNFLGNCQKEREELRLKEKTYSLWPFLLDDKKKYL NPLYSSKSQRLTVLEPNTASF
 NFKFWRNMYHQFDRTLHPRQSVLSIIMMNEQSKQLEEDIKDLEAKIKQCKNGILTKELLHAVHPESPAL
 KTSLSLKEPSLLPVKDTLRAIEGSSPADNRYCDYAEFSKSEPTVVSLEYGVARMT

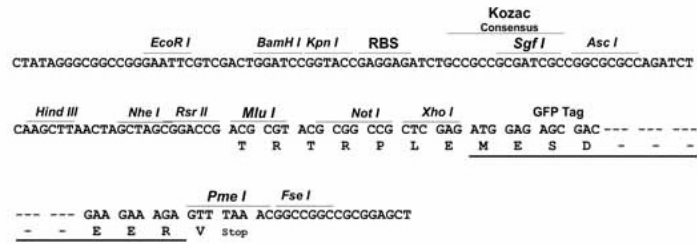
TRTRPLE - GFP Tag - V

Restriction Sites:

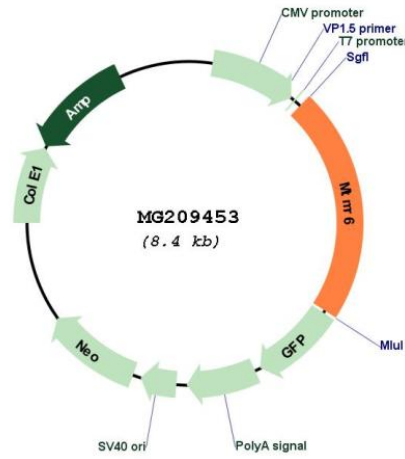
Sgfl-MluI

Cloning Scheme:

Cloning sites used for ORF Shutting:



Plasmid Map:



ACCN: NM_144843
ORF Size: 1851 bp

OTI Disclaimer:	The molecular sequence of this clone aligns with the gene accession number as a point of reference only. However, individual transcript sequences of the same gene can differ through naturally occurring variations (e.g. polymorphisms), each with its own valid existence. This clone is substantially in agreement with the reference, but a complete review of all prevailing variants is recommended prior to use. More info
OTI Annotation:	This clone was engineered to express the complete ORF with an expression tag. Expression varies depending on the nature of the gene.
Components:	The ORF clone is ion-exchange column purified and shipped in a 2D barcoded Matrix tube containing 10ug of transfection-ready, dried plasmid DNA (reconstitute with 100 ul of water).
Reconstitution Method:	<ol style="list-style-type: none">1. Centrifuge at 5,000xg for 5min.2. Carefully open the tube and add 100ul of sterile water to dissolve the DNA.3. Close the tube and incubate for 10 minutes at room temperature.4. Briefly vortex the tube and then do a quick spin (less than 5000xg) to concentrate the liquid at the bottom.5. Store the suspended plasmid at -20°C. The DNA is stable for at least one year from date of shipping when stored at -20°C.
RefSeq:	NM_144843.4
RefSeq Size:	3813 bp
RefSeq ORF:	1854 bp
Locus ID:	219135
UniProt ID:	Q8VE11
Cytogenetics:	14 D1
Gene Summary:	Phosphatase that acts on lipids with a phosphoinositol headgroup. Dephosphorylates phosphatidylinositol 3-phosphate (PtdIns(3)P) and phosphatidylinositol 3,5-bisphosphate. Binds with high affinity to phosphatidylinositol 3,5-bisphosphate (PtdIns(3,5)P2) but also to phosphatidylinositol 3-phosphate (PtdIns(3)P), phosphatidylinositol 4-phosphate (PtdIns(4)P), and phosphatidylinositol 5-phosphate (PtdIns(5)P), phosphatidic acid and phosphatidylserine (By similarity). Negatively regulates ER-Golgi protein transport (By similarity). Probably in association with MTMR9, plays a role in the late stages of macropinocytosis by dephosphorylating phosphatidylinositol 3-phosphate in membrane ruffles (PubMed:24591580). Acts as a negative regulator of KCNN4/KCa3.1 channel activity in CD4(+) T-cells possibly by decreasing intracellular levels of phosphatidylinositol 3-phosphate. Negatively regulates proliferation of reactivated CD4(+) T-cells. In complex with MTMR9, negatively regulates DNA damage-induced apoptosis. The formation of the MTMR6-MTMR9 complex stabilizes both MTMR6 and MTMR9 protein levels (By similarity).[UniProtKB/Swiss-Prot Function]