

## Product datasheet for **MG209445**

### **Muc20 (NM\_146071) Mouse Tagged ORF Clone**

#### **Product data:**

Product Type:	Expression Plasmids
Product Name:	Muc20 (NM_146071) Mouse Tagged ORF Clone
Tag:	TurboGFP
Symbol:	Muc20
Synonyms:	BC026367
Mammalian Cell Selection:	Neomycin
Vector:	pCMV6-AC-GFP (PS100010)
E. coli Selection:	Ampicillin (100 ug/mL)



[View online »](#)

**ORF Nucleotide Sequence:**

>MG209445 representing NM\_146071  
 Red=Cloning site Blue=ORF Green=Tags(s)

TTTTGTAATACGACTCACTATAGGGCGGCCGGAATTCGTCGACTGGATCCGGTACCGAGGAGATCTGCC  
 GCC**CGGATCGCC**

ATGGAAGTGTCCACCTTCACTCAAAGGGACAGGCCAGCTCAGAGAGAGCTTTCCAGACCACCAACCTGA  
 TTCAGTATGTACCTCTAGACACGCAAACCTCAGCACTGAATCTGCTTCTAATGCTTAAAGTCAACTAG  
 TATCAGTTCAGAGGTCAATTCAGAGACACTCAGACCACCTCTTTTGTAAACAAAGACCAGGAAGACACAT  
 ACTACCACTCCTGCAGCATCATCCCTAGAGGCCAGACCACCTCTCCTAATTTGTCAACCCTGAATATTC  
 AGATTACCTCCCAATAGCATCGTCCCTGGATGCTCAGACCATTTTTCTGTATCATTATCCCTGAGTAC  
 CCAGACCATTCTCCTGCACCATCATTCTGGATACCCAAACCACTTCCCCTGAACCATCATCTCTGACC  
 ACTTCCCCTGCACCATCATCTCTGATCACTTCTCTACTCCATCATCTCTAACTACATCCCCTGCACCAT  
 CATTCTGGATACCCAGACCCTTCCCCTGCACCATCATCTCTGACCCTTCCCCTGCACCATCATCCCT  
 AGATACCCAGACCATCTCACCTATTGAATTGACCTAAAGACCCAAACCTTTCCACTGTAAACGGAGACC  
 AGAACGGTTTCAATAAGAATACCTTCTGACCTCACGGTTATGCACACCATCCCTACAGAGACATTGGCAC  
 CAAGCAACAGCCCCAGAACTGGGATGAGCACTGTCCAAACTGGCACAGTGTGGGACTCCATAGAAGCCGT  
 CTTTGACACCTTTGTACCGATGACAGCTCTGAAGAGGCAAGGAAGATCACAGTTGACCTCCTGACGTTG  
 GCACACACCTCCACGGAAGTGGAGTACCTGTCTCAGAGAGCAGCTTCTCCTCTGACAGTTCAGCTGGGG  
 TCCTCAGCAGCTCAGGAGTCTGGGACCCGACAGTGAACCTCCAGCCAAGGGGTTGGTTGCCTTCAACAT  
 CACTCATATTAACCTCAGCAACTGCATCACAGAAATAGAAACAACCATCACCATCTCTGGGGCCCCAGGC  
 GCGAGCCTCAGCCCTACAGAAGCGACGGCAGCTTTGTTCACTTCTGAGATTAATACTTTGCCTCCACCCA  
 CTGAGGCCAAAACCAATTTTCCCAGACCCACAAGCTTATCTGGGATCCTGTCAACTGCTGGCACCCTGGC  
 CCTTGCCACCACCTTGAGGGGACAGTCTCCACTAGTGAATCACAGAAAGCGAAACAGCAGTGGCCCGAG  
 ACTCTTACCTCTGTTGGAACCTTCGGTGACAGTTAGAAGGAACCCCTGGAAAACACTTCAACACTCTCTA  
 TTGAGACACAAAGCCACACTGAGGTCTTGGGCACCATCACAGTCCCATGGTTGCTGGATCAACAATGGG  
 AGAAGCAGCTCCTTCGTGAGTTTACGGCTCTCGACAGCAGCAGTCTCTCAGTGGTGGTACCACCGAG  
 AGCTCTGCTACCTCAGAGACTTTAACACAGGCAATACAACCAACAGCTCCTTCTCACAGAGAGCCACC  
 CTCCTTTTTCTATCTATTCAACTACAGCTAGCACCAGCAAAAACCCAAACATCACCTTAACCAAGACCAC  
 AGCCTCACAAAGCCCCGACGCATCTACAACATCTGCATCCACTGCTTGGATAAGGAAAACCAAAAA  
 CATGATCCAGGTGAAGATGGAGGCTTCTCCTTGTACGGCTGACCGTGGCCTCCCCTAAGGACCTACTG  
 AGCACAACGCCAGAGAGAAGCTGATGAACCAGCTCCGCCGTGAAGTGCACGCCCGCATGCCACTTGCCA  
 CATGTCTTCTGAGCATCAGGAGGGGT

**ACGCGT**ACGCGGCCGCTCGAG – GFP Tag – GTTTAA

**Protein Sequence:**

>MG209445 representing NM\_146071  
 Red=Cloning site Green=Tags(s)

MEVSTFTQRDRPSSERAFQTTNLIQYVPLDTQTLSTESASNALSATSISSEVNSRDTQTTSFVTKRKH  
 TTTPAASSLEAQTTPNLSTLNIQITSPIASSLDAQTIFPVSLSLSTQTTSPAPFLDTQTTSPPESSLT  
 TSPAPSSLITSPSSLTTPAPFLDTQTTSPAPSSLTTPAPSLDTQTTISPIELTLKTQITSTVET  
 RTVSIRIPSDLVMHTIPTETLAPSNPRGTMSTVQGTWVDSIEAVFDLCTDDSEEARKITVDLLTL  
 AHTSTEVEYLSSESSSSDSSAGVLSRRVLPDSATPAKGLVAFNITHIKLSNCITEIETITISGAPG  
 ASLSPTEATAALFTSEILTLPPPTEAKPIFPETTSLSGILSTAGTPALATTLEGTVSTSAITESETAVAQ  
 TLTSVGTSVTVRRNPLENTSLSIETQSHTEVLGTITVPMVAGSTMGEAASFVSFTALDSSLSVVVTE  
 SSATSETLTTGNTNSSFLETSHPPFSIYSTASTSKNPNILTKTTASPKPPTHPTTSASTAWIRKTKT  
 HDPGEDGGFLLVRLTVASPKDLTEHNAREKLMNQLRRELHARMPLVHMSFLSIRRG

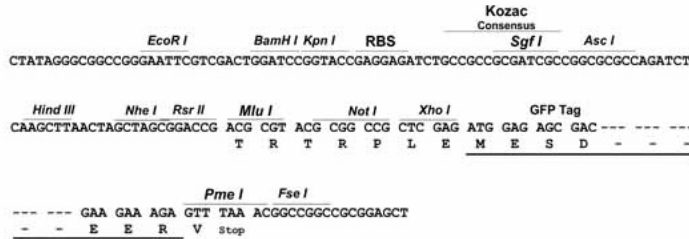
**TRTRPLE** – GFP Tag – V

**Restriction Sites:**

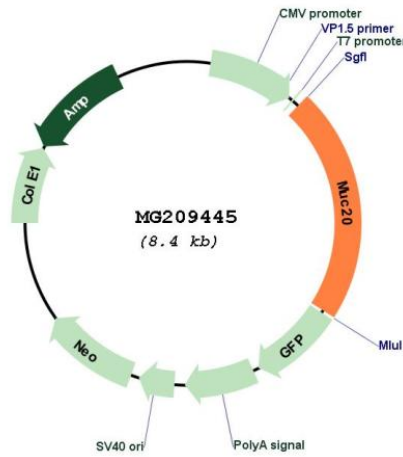
SgfI-MluI

Cloning Scheme:

Cloning sites used for ORF Shutting:



Plasmid Map:



ACCN: NM\_146071  
 ORF Size: 1848 bp

<b>OTI Disclaimer:</b>	The molecular sequence of this clone aligns with the gene accession number as a point of reference only. However, individual transcript sequences of the same gene can differ through naturally occurring variations (e.g. polymorphisms), each with its own valid existence. This clone is substantially in agreement with the reference, but a complete review of all prevailing variants is recommended prior to use. <a href="#">More info</a>
<b>OTI Annotation:</b>	This clone was engineered to express the complete ORF with an expression tag. Expression varies depending on the nature of the gene.
<b>Components:</b>	The ORF clone is ion-exchange column purified and shipped in a 2D barcoded Matrix tube containing 10ug of transfection-ready, dried plasmid DNA (reconstitute with 100 ul of water).
<b>Reconstitution Method:</b>	<ol style="list-style-type: none"><li>1. Centrifuge at 5,000xg for 5min.</li><li>2. Carefully open the tube and add 100ul of sterile water to dissolve the DNA.</li><li>3. Close the tube and incubate for 10 minutes at room temperature.</li><li>4. Briefly vortex the tube and then do a quick spin (less than 5000xg) to concentrate the liquid at the bottom.</li><li>5. Store the suspended plasmid at -20°C. The DNA is stable for at least one year from date of shipping when stored at -20°C.</li></ol>
<b>RefSeq:</b>	<a href="#">NM_146071.1</a> , <a href="#">NP_666183.1</a>
<b>RefSeq Size:</b>	2296 bp
<b>RefSeq ORF:</b>	1971 bp
<b>Locus ID:</b>	224116
<b>UniProt ID:</b>	<a href="#">Q8BUE7</a>
<b>Cytogenetics:</b>	16 B3
<b>Gene Summary:</b>	May regulate MET signaling cascade. Seems to decrease hepatocyte growth factor (HGF)-induced transient MAPK activation. Blocks GRB2 recruitment to MET thus suppressing the GRB2-RAS pathway. Inhibits HGF-induced proliferation of MMP1 and MMP9 expression (By similarity).[UniProtKB/Swiss-Prot Function]