

## Product datasheet for **MG209443**

### **Dtx4 (NM\_172442) Mouse Tagged ORF Clone**

#### **Product data:**

Product Type:	Expression Plasmids
Product Name:	Dtx4 (NM_172442) Mouse Tagged ORF Clone
Tag:	TurboGFP
Symbol:	Dtx4
Synonyms:	A1449438; BC044798; D930042H13; RNF155
Mammalian Cell Selection:	Neomycin
Vector:	pCMV6-AC-GFP (PS100010)
E. coli Selection:	Ampicillin (100 ug/mL)



[View online »](#)

**ORF Nucleotide Sequence:**

>MG209443 representing NM\_172442  
 Red=Cloning site Blue=ORF Green=Tags(s)

TTTTGTAATACGACTCACTATAGGGCGGCCGGAATTCGTCGACTGGATCCGGTACCGAGGAGATCTGCC  
 GCC**CGGATCGCC**

ATGCTCCTGGCCTCGGCAGTGGTGGTGTGGGAATGGCTGAACGAACACGGCCGCTGGCGTCCCTACAGCC  
 CAGCCGTGAGTACCACATCGAGGCGGTGGTGC GCGCTGGTCCCCGCGCCGGGGCAGCGTGGTGTGGG  
 CCAGGTGGACAGCCGGCTCGCGCCCTACATCATCGACCTGCAGTCCATGAACCAGTTCGCCCAAGACACG  
 GGGACCTCCGCCAGTTCGACGAACTACTATGACCCATCCTCAGCCCTGGTAAGGGAGTCGTGTGGG  
 AATGGGAGAATGACAATGGTTCCTGGACTCCCTATGACATGGAAGTCGGCATCACCATCCAGTATGCCTA  
 TGAGAAGCAGCACCCATGGATCGACCTCACCTCCATTGGCTTCAGCTACATAATAGACTTCAGCACCATG  
 GGCCAGATCAACAGGCAGACCCAAGCCAGCGCCGTGTCAGACGACGACTAGACCTCATCTACCCCATGG  
 TCACGGGCACTATGCCAAAGACTCAGTCTGGCCAGTCAGTCTGGACCGGCAGCTCCTCCCTGCACC  
 ACCTTGCTCCTGTCCACAGTGTGTTTTGGTGTGAGCGTCAAGGCTGCTGTGGTCCATGGGGGACTGGG  
 CCTCCAGCAGTACGAAAGAACATGGCCCTCTCTGGAGTGGCAAGCTGCCCCAGCCACCTGGCCCTGGAG  
 CAAAGCCACTAGACACCACTGGCACCATTTCGAGGCCAGGGAAGACAGCCCCATCGCAGGTTATCAGAAG  
 ACAAGTCTCTAATGCACCAGCTGGGGGACTGTAGGCTCCCTACCAGCCACAAGGAAGCAACAGGAAG  
 ACTGGAAGGGTGGCACTGGCCACTTTGAATCGGTCCAATCTGCAGCGACTGGCCATTGCCAGTCCCGGG  
 TGCTGATTGCCTCCGGGTTCCCACTGTGCCTGTGAAAACTTGAATGGGTCCAGCCCTGTTAATCTGC  
 CTTGGCAGGAATACCGGGATACTCATGAGTGCAGCGGGATTGCCTGTGTGCCTCACTCGCCACCAAAG  
 CTGGTCTCCACCCGCCCTGTGAGCAAGAGTGAAGTAAAGTCCATCCCAGGGTCTCGAACACGAGCC  
 CGAAGACCACAAAAGCAAGCCAAGAAAGGTAAGAAACCCAGAGGAAGTGCTAAAGAAGTACCTGCAGAA  
 GGTCCGGCACCCACCAGAAGAGGATTGTACCATCTGTATGGAGCGTCTCACAGCCCCCTCTGGCTACAAA  
 GGCCACAGCCTACAGTCAAGCCTGACCTGGTGGAAAGCTGTCCAGGTGTGGCCACATCTACCACATCT  
 ACTGCCTGGTGGCTATGTACAACAATGGGAACAAGGATGGGAGTTTACAGTGCCCAACATGTAAGACCAT  
 TTATGGCGTCAAGACAGGCACCCAGCCTCCAGGGAAGTGAATACCACCTCATCCCCACTCCTTGCT  
 GGCCATCCGGACTGCAAGACCATCCGGATCATCTACAGTATCCCCCTGGCATTCCAGGGACCAGAGCATC  
 CGAATCCTGGGAAGGCTTCAGTCCCGTGGCTTCCCACGACATTGTTACCTTCCAGACAGCGAGAAGGG  
 GAGAAAAGTTCTGAAGCTGCTTCTAGTGGCCTGGGACCGCGTCTCATCTTGGCATTGGAACCTCCAGC  
 ACCACGGGCGAGTCCGATACTGTATCTGGAATGAGGTTACCACAAAACAGAATTTGGCTAATCTCA  
 CTGGCCATGGCTACCCAGATGCCAATTACCTGGATAACGTGCTGGCTGAAGTGGCTGCCAGGGTATCTC  
 TGAAGACAGCACTTCCCATGAAAAGGAC

**ACGCGT**ACGCGGCCGCTCGAG - GFP Tag - GTTTAA

**Protein Sequence:**

>MG209443 representing NM\_172442  
 Red=Cloning site Green=Tags(s)

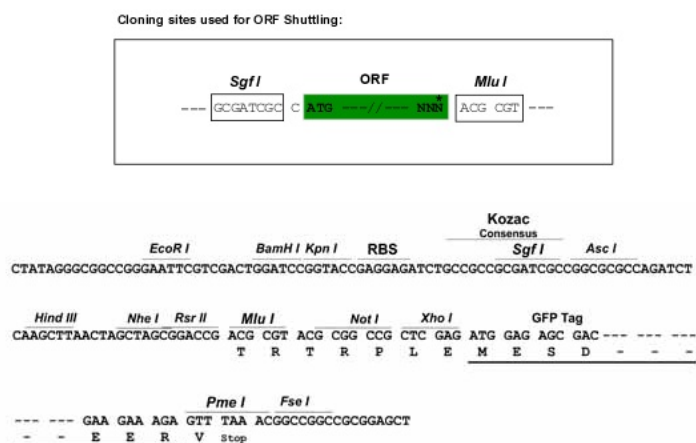
MLLASAVVWELNEHGRWRPYPSPAVSHHIEAVVRAGPRAGGSVVLGQVDSRLAPYIIDLQSMNQFRQDT  
 GTLRPVRRNYDPSSAPGKGVVWVWENDNGSWTPYDMEVGITIQYAYEKQHPWIDLTSIGFSYIIDFSTM  
 GQINRQTQRQRVRRRLDLIYPMVTGTMPTQSWPVSPGPATSSPAPPCSCPQCVLMSVKAADVHGGTG  
 PPAVRKNMALSGVGKLPQPPGPGAKPLDITGIRGPGKTAPSQVIRRQVSNAPAGATVGSPTSPQGSNRK  
 TGRVALATLNRNLQRLAIAQSRVLIASGVPTVPVKNLNGSSPVNPALAGITGILMSAAGLPVCLTRPPK  
 LVLHPPPVSKSEIKSIPGVSNTSRKTTKKQAKKGTPEEVLKKYLQKVRHPPEEDCTICMERLTAPSGYK  
 GPQPTVKPDLVGKLSRCGHIYHIYCLVAMYNNNGKDGSLQCPTCKTIYGVKTGTQPPGKMEYHLIPHS  
 LPHDCKTIRIYSIPPGIQGPEHPNPGKFSARGFPRHCYLPDSEKGRKVLKLLLVAWDRRLIFAIGTSS  
 TTGESDVIWNEVHHKTEFGSNLTGHGYPDANYLDNVLAELAAQGISDSTSHKED

**TRTRPLE** - GFP Tag - V

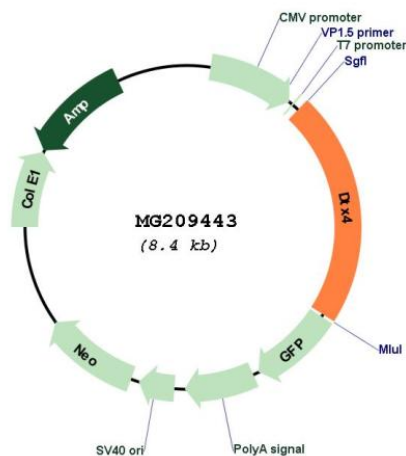
**Restriction Sites:**

Sgfl-MluI

## Cloning Scheme:



## Plasmid Map:



ACCN: NM\_172442

ORF Size: 1848 bp

<b>OTI Disclaimer:</b>	The molecular sequence of this clone aligns with the gene accession number as a point of reference only. However, individual transcript sequences of the same gene can differ through naturally occurring variations (e.g. polymorphisms), each with its own valid existence. This clone is substantially in agreement with the reference, but a complete review of all prevailing variants is recommended prior to use. <a href="#">More info</a>
<b>OTI Annotation:</b>	This clone was engineered to express the complete ORF with an expression tag. Expression varies depending on the nature of the gene.
<b>Components:</b>	The ORF clone is ion-exchange column purified and shipped in a 2D barcoded Matrix tube containing 10ug of transfection-ready, dried plasmid DNA (reconstitute with 100 ul of water).
<b>Reconstitution Method:</b>	<ol style="list-style-type: none"><li>1. Centrifuge at 5,000xg for 5min.</li><li>2. Carefully open the tube and add 100ul of sterile water to dissolve the DNA.</li><li>3. Close the tube and incubate for 10 minutes at room temperature.</li><li>4. Briefly vortex the tube and then do a quick spin (less than 5000xg) to concentrate the liquid at the bottom.</li><li>5. Store the suspended plasmid at -20°C. The DNA is stable for at least one year from date of shipping when stored at -20°C.</li></ol>
<b>RefSeq:</b>	<a href="#">NM_172442.2</a> , <a href="#">NP_766030.2</a>
<b>RefSeq Size:</b>	5243 bp
<b>RefSeq ORF:</b>	1851 bp
<b>Locus ID:</b>	207521
<b>UniProt ID:</b>	<a href="#">Q6PDK8</a>
<b>Cytogenetics:</b>	19 A
<b>Gene Summary:</b>	Functions as a ubiquitin ligase protein in vivo, mediating 'Lys48'-linked polyubiquitination and promoting degradation of TBK1, targeting to TBK1 requires interaction with NLRP4 (By similarity). Regulator of Notch signaling, a signaling pathway involved in cell-cell communications that regulates a broad spectrum of cell-fate determinations. [UniProtKB/Swiss-Prot Function]