

Product datasheet for **MG209435**

Ssx2ip (NM_138744) Mouse Tagged ORF Clone

Product data:

Product Type:	Expression Plasmids
Product Name:	Ssx2ip (NM_138744) Mouse Tagged ORF Clone
Tag:	TurboGFP
Symbol:	Ssx2ip
Synonyms:	Adip; AU014939; AU042321
Mammalian Cell Selection:	Neomycin
Vector:	pCMV6-AC-GFP (PS100010)
E. coli Selection:	Ampicillin (100 ug/mL)



[View online »](#)

ORF Nucleotide Sequence:

>MG209435 representing NM_138744
 Red=Cloning site Blue=ORF Green=Tags(s)

TTTTGTAATACGACTCACTATAGGGCGGCCGGAATTCGTCGACTGGATCCGGTACCGAGGAGATCTGCC
 GCC**CGGATCGCC**

ATGGGAGATTGGATGACTGTGACAGATCCAGTTCTGTGTACAGAAAACAAAAATCTCTCAATATACCT
 CAGAAACAAGATGTCTCCGTCCAGTTTGTACTCCAGCAAGTTCTGTGCTCTTACGTACCTTTATCCAA
 AAACGTGCATGGTGTTCGTTCTTCTGCACAGGAGAGAACATTGAACAAAGTATTCCTATCTTGAT
 CAGGAGCTGACCACCTTCGGGTTTCTTCTTGTATGAAGAATCCAAAAGTAAAGAGGCAAAGAGAGAAT
 TAAATATAGTCGCTGTTCTGAAGTGTATGAACGAGCTGCTCGTCTTACGCGGAAGAACTTGCTGGCCAA
 GGAGAGCGTGGAGACACAGAAGTGAAGCTGGGCAGTGCATGGACCACCTGCAGAGCTGCTACGCCAAA
 CTTAAGGAGCAGTTGAAACGTCCAGGCGGGAGATGATCGGGCTCAAGAGAGAGACAGGCAGCTGCAGT
 GCAAGAACAGGAGTTGCATCAGCTCCTGAAGAATGAGAAAGATGAGGTACAAAAATTACAAAATATCAT
 AGCCAGCCGGGCTACTCAGTATAATCATGATGTGAAGAGGAAGGAGCGTGAATATAATAAGCTAAAGGAG
 CGCTGCATCAGCTCGTTATGAACAAGAAGGATAAAAACATAGCCATGGATGTTTTAAATATGTGGGTC
 GAGCTGATGGCAAACGAGGCTCATGGAGGACTGACAAAACAGAAGCCAGGAATGAAGATGAGATGTACAA
 AATTCTGTTGAATGATTATGAGTACCGCCAGAAGCAGATCCTGATGGAGAACCGGGAGCTGAAGAAGGTC
 CTCCAGCAGATGAAGAAGGAGATGATCTCTCTCTCTCCTCAGAAGAAGAAGCCAGGGAAAGAGCAG
 AGGACGGCACAGGCACTGTTGCTATCTCCGATATAGAAGTACTCTGGGAACTGAGCAGAGACAGCGT
 GTGGGGCTTTCTGTGACACTGTGAGAGAGCAGCTGACAAAACAGCATCAGGAAACAGTGGAGAATTTG
 AAAAGTCATGTAGAAAACTCGATAACCAAGCTTCGAAGGTACTCTCAGAGGGCTTAATGAGGAGGACG
 TCATCTCACGACAAGACCATGAGCAAGAGACTGAGAACTGGAGCTGGAGATTGAGCGGTAAAGAGAT
 GATCAAGGCTCAGCAGCAGCTCTTACAGCAGCAGCTGGCCACCAGTGTGATGATGACACCACCTCACTG
 TTGCGAGACTGTTACTTCTGGAAGAAAAGGAACGCCTTAAAGAAGAGTGACCCCTTTTTAAAGAGCAAA
 AAAAGAATTTTGAGAGAGAAAGCGAAGCTTTACAGAAGTCCATTGATTGGGGTTGGAGAGAAAGGC
 GTTTGAAGAAGAGCGAGCCAGCTGGGTAAGCAGCAGTTTTTAAACATGACGAACTTTGACCACCAGAAC
 TCAGAAAATGTGAACTTTTTCAGTGCTTCTCAGGAAGTCTGATCCAGACAATCTTATAGTCCACTCAC
 GGCCACGGCAAAAGAAGCTACACAGTGTGGCTAATGGGGTCCAGCTTGCACATCAAACACTGACTAAATC
 TCTTCTGCCTCACCTTCTACTTACAGCTTTCCGACACACATTCATGTGTGTCTGAACACAGTTCCATC
 AGTGTGCTGAATATAACTCCTGAAGAAAGTAAACCAAGTGAAGTTGCAAGAGAAAGCAGGATCAGAAGT
 GGAGCGTGCAGTCGAGGCCAGCTCGCGGGAGGGGTGCTACAGCGGATGCTCCTCGGCCTCAGGAGCGC
 TCACGGGGACCGAGATGACTTACCT

ACGCGTACGCGGCCGCTCGAG – GFP Tag – GTTTAA

Protein Sequence:

>MG209435 representing NM_138744
 Red=Cloning site Green=Tags(s)

MGDWMVTDPVLCNENKLSQYTSKMSPLSYQQVLCSSVPLSKNVHGVFVFTGENIEQISISYLD
 QELTTFGFPSLYEESKSKEAKRELNIVAVLNCMNELLVLQRKNLLAQESVETQNLKLGSDMDHLQSCYAK
 LKEQLETSRREMIGLQERDRQLQCKNRSLLHQLLQKNEKDEVQKLQNI IASRATQYNHDKREREYNKLE
 RLHQLVMNKKDKNIAMDVLNYVGRADGKRGSWRTDKTEARNEDEMYKILLNDYEYRQKQILMENAELKKV
 LQQMKKEMISLLSPQKKKPRERAEDGTVAISDIEDDSGELSRDSVWGLSCDVTREQLTNSIRKQWRIL
 KSHVEKLDNQASKVHSEGLNEEDVISRQDHEQTEKLELEIERCKEMIKAQQQLLQQQLATTCDDDTTSL
 LRDCYLLKEERLKEEWTLFKEQKKNFERERRSFTEAAIRLGLERKAFFEEERASWVKQFLNMTNFDHQN
 SENVKLFSAFSGSSDPDNLIVHSRPRQKLLHSVANGVPACTSKLTKSLPASPSTSDFRQTHSCVSEHSSI
 SVLNITPEESKPSEVARESTDQKWSVQSRPSSREGCYSGCSSAFRSAHGDRDDL

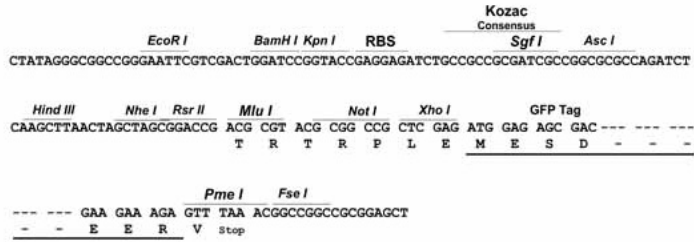
TRTRPLE – GFP Tag – V

Restriction Sites:

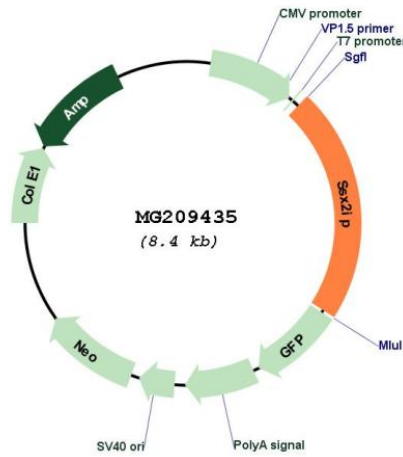
SgfI-MluI

Cloning Scheme:

Cloning sites used for ORF Shutting:



Plasmid Map:



ACCN: NM_138744
 ORF Size: 1845 bp

OTI Disclaimer:	The molecular sequence of this clone aligns with the gene accession number as a point of reference only. However, individual transcript sequences of the same gene can differ through naturally occurring variations (e.g. polymorphisms), each with its own valid existence. This clone is substantially in agreement with the reference, but a complete review of all prevailing variants is recommended prior to use. More info
OTI Annotation:	This clone was engineered to express the complete ORF with an expression tag. Expression varies depending on the nature of the gene.
Components:	The ORF clone is ion-exchange column purified and shipped in a 2D barcoded Matrix tube containing 10ug of transfection-ready, dried plasmid DNA (reconstitute with 100 ul of water).
Reconstitution Method:	<ol style="list-style-type: none">1. Centrifuge at 5,000xg for 5min.2. Carefully open the tube and add 100ul of sterile water to dissolve the DNA.3. Close the tube and incubate for 10 minutes at room temperature.4. Briefly vortex the tube and then do a quick spin (less than 5000xg) to concentrate the liquid at the bottom.5. Store the suspended plasmid at -20°C. The DNA is stable for at least one year from date of shipping when stored at -20°C.
RefSeq:	NM_138744.1
RefSeq Size:	3396 bp
RefSeq ORF:	1848 bp
Locus ID:	99167
UniProt ID:	Q8VC66
Cytogenetics:	3 H2
Gene Summary:	Belongs to an adhesion system, which plays a role in the organization of homotypic, interneuronal and heterotypic cell-cell adherens junctions (AJs). May connect the nectin-afadin and E-cadherin-catenin system through alpha-actinin and may be involved in organization of the actin cytoskeleton at AJs through afadin and alpha-actinin (PubMed:12446711). Acts as a centrosome maturation factor, probably by maintaining the integrity of the pericentriolar material and proper microtubule nucleation at mitotic spindle poles. The function seems to implicate at least in part WRAP73; the SSX2IP:WRAP73 complex is proposed to act as regulator of spindle anchoring at the mitotic centrosome (By similarity). Involved in cell movement: localizes at the leading edge of moving cells in response to PDGF and is required for the formation of the leading edge and the promotion of cell movement, possibly via activation of Rac signaling (PubMed:22027834). Involved in ciliogenesis (By similarity). It is required for targeted recruitment of the BBSome, CEP290, RAB8, and SSTR3 to the cilia (By similarity).[UniProtKB/Swiss-Prot Function]