

Product datasheet for **MG209431**

Nr1d1 (NM_145434) Mouse Tagged ORF Clone

Product data:

| | |
|---------------------------|--|
| Product Type: | Expression Plasmids |
| Product Name: | Nr1d1 (NM_145434) Mouse Tagged ORF Clone |
| Tag: | TurboGFP |
| Symbol: | Nr1d1 |
| Synonyms: | A530070C09Rik; R75201 |
| Mammalian Cell Selection: | Neomycin |
| Vector: | pCMV6-AC-GFP (PS100010) |
| E. coli Selection: | Ampicillin (100 ug/mL) |



[View online »](#)

ORF Nucleotide Sequence:

>MG209431 representing NM_145434
 Red=Cloning site Blue=ORF Green=Tags(s)

TTTTGTAATACGACTCACTATAGGGCGGCCGGAATTCGTCGACTGGATCCGGTACCGAGGAGATCTGCC
 GCC**GCGATCGCC**

ATGACGACCTGGACTCCAATAACAACACAGGTGGTGTATCACCTACATTGGCTCTAGTGGCTCCTCCC
 CGAGCCGACCAGCCCGAGTCCCTCTACAGTGACAGCTCCAATGGCAGCTTCCAGTCCCTGACTCAAGG
 TTGTCACACATACTTCCACCATCACCTACTGGCTCCCTCACCCAGGACCCTGCCCGCTCTTTTGGCAGT
 GCGCCACCAGTCTCAGTGATGATAGCTCCCTTCTTCTACATCATCGTCATCCTCTTTCATCCTCCTCCT
 CCTTCTATAACGGGAGCCCCCAGGAAGTCTACAAGTGGCCATGGAAGACAGCAGCCGAGTGTCCCCAG
 CAAGGGCACAAGCAACATTACCAAGCTGAATGGCATGGTGTACTGTGTAAGGTGTGTGGGACGTGGCC
 TCAGGCTTCCACTATGGAGTGCACGCCTGTGAGGGCTGCAAGGGCTTTTTTCGCCGGAGCATCCAACAGA
 ATATCCAGTACAAACGGTGTCTGAAAAACGAAACTGCTCCATCGTTCGCATCAATCGAACCGCTGCCA
 GCAGTGTGCTTCAAGAAGTGTCTCTCCGTTGGCATGTCTAGAGATGCTGTGCGTTTTGGCGCATCCCC
 AAGAGAGAGAAGCAACGGATGCTTGCCGAGATGCAGAGCGCCATGAACTTGGCCAACAACCAACTGAGCA
 GCCTGTGCCCTCTAGAGACCTCACCTACTCCACATCCCACCTCTGGCTCCATGGGCCCCCTCACCTCCTCC
 TGCACCAGCCCCACACCTTTGGTGGGCTTCTCTCAGTTCACACAACAGCTGACACCACCCAGGTCTCCC
 AGCCCTGAGCCCACCATGGAGGATGTGATATCCAGGTGCCCCGGGCCATCGAGAAATCTTACCTATG
 CCCATGACAAGTTAGGCACCTCACCTGGTAACTTCAATGCCAATCATGCATCAGGTAGCCCTTACAGTAC
 AACTCCACACCGCTGGGAGAGTCAGGGATGCCCGTCTGCCCCAACGACAACAACCTTTTGGCGGCTCAG
 CGTCATAATGAAGCGCTGAATGGTCTACGCCAGGGCCCTTCTCTACCCGCTACCTGGCCTTCTGGCC
 CCACCACCACAGCTGCCACCAACCTAACAGCAATGGGCACCGTCTGTGCCCCACCACGATATATTCGGC
 CCACAGAAGGGGAGGCACCTGCCAACAGTCTACGGCAAGGCAACCAAGAATGTTCTGTGGCATGTCCC
 ATGAACATGTATCCCATGGACGCAGCGCCGGACTGTGCAGGAGATCTGGGAAGACTTCTCTATGAGCT
 TCACGCCTGCCGTTGGGAGGTGGTAGAGTTTGCCAAACACATCCCAGGCTTCCGTGACCTTTCTCAGCA
 CGACCAGGTGACCCTGCTTAAGGCTGGCACCTTTGAGGTGCTGATGGTGCCTTTGCATCGTTGTTCAAC
 GTGAAGGACCAGACAGTGTGTTCTGAGCCGACAACTACAGTCTGCAGGAGCTCGGTGCCATGGGCA
 TGGGGCAGCTGCTCAATGCCATGTTGACTTCAGCGAGAAGCTCAACTCCCTGGCACTTACCAGGAGGA
 GCTGGGCTATTACCGCGGTGGTCTTGTCTCTGCAGACCGCTCGGAATGGAGAATCCGCTTCGGTG
 GAGCAGCTCCAGGAGACGCTGCTGCGGGCTCTTGGGCTCTGGTGTGAAGAACCAGCCCTCGGAGACTT
 CCCGCTTACCAAGCTGCTGCTCAAGCTGCCGGACCTGCCGACCTGAACAACATGCATTCGAGAAAGCT
 GCTGTCTTCCGGGTGGACGCCAG

ACGCGTACGCGGCCGCTCGAG - GFP Tag - GTTTAA

Protein Sequence:

>MG209431 representing NM_145434
 Red=Cloning site Green=Tags(s)

MTTLDNNNTGGVITYIGSSGSSPSRTSPESLYSDSSNGSFQSLTQGCPTYFPPSPTGSLTQDPARSFGS
 APPSLSDSSPSSTSSSSSSSSSFYNGSPPGSLQVAMEDSSRVSPSKGTSNITKLNGLMVLCKVCGDVA
 SGFHYGVHACEGCKGFFRRSIQQNIQYKRCLKNENCSIVRINRNRQCRCRKKCLSVGMSRDAVRFGRIP
 KREKQRMLAEMQSAMNLANQLSSLCPLETSPTPHPTSGSMGSPPPAPAPTPLVGFSSQFPQQLTPPRSP
 SPEPTMEDVISQVARAHREIFTYAHDKLGTSNGFNANHASGSPSATTPHRWESQGCPSAPNDNNLLAAQ
 RHNEALNGLRQGPSSYPPTWPSGPTTHSCHQPNSNGHRLCPHVVYSAPEGEAPANSLRQGNLTKNVLAC
 MNMYPHGRSGRTVQEIWEDFSMSFTPAVREVEFAKHIPGFRDLQHDQVTLLKAGTFEVLVRFASLFLN
 VKDQTVMFLSRTTYSLQELGAMGMGDLNAMFDFSEKLNLSLALTEEELGLFTAVVLVSADRSKMENSASV
 EQLQETLLRALRALVLKNRPSETSRFTKLLKLPDLRLTLNMHSEKLLSFRVDAQ

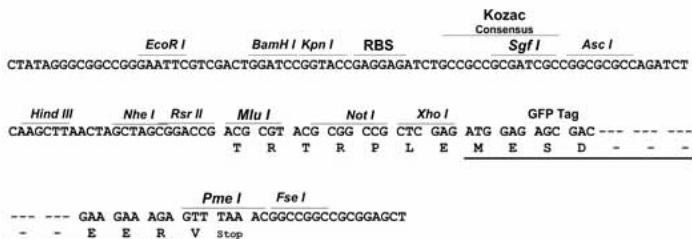
TRTRPLE - GFP Tag - V

Restriction Sites:

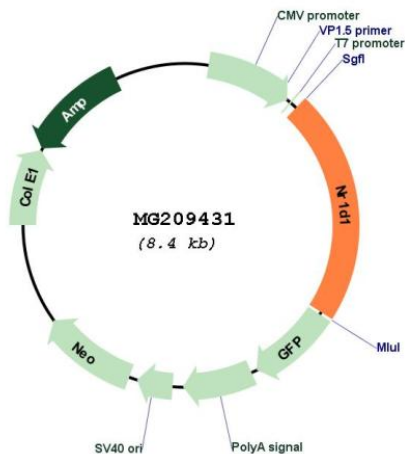
SgfI-MluI

Cloning Scheme:

Cloning sites used for ORF Shutting:



Plasmid Map:



ACCN: NM_145434
 ORF Size: 1845 bp

| | |
|-------------------------------|---|
| OTI Disclaimer: | The molecular sequence of this clone aligns with the gene accession number as a point of reference only. However, individual transcript sequences of the same gene can differ through naturally occurring variations (e.g. polymorphisms), each with its own valid existence. This clone is substantially in agreement with the reference, but a complete review of all prevailing variants is recommended prior to use. More info |
| OTI Annotation: | This clone was engineered to express the complete ORF with an expression tag. Expression varies depending on the nature of the gene. |
| Components: | The ORF clone is ion-exchange column purified and shipped in a 2D barcoded Matrix tube containing 10ug of transfection-ready, dried plasmid DNA (reconstitute with 100 ul of water). |
| Reconstitution Method: | <ol style="list-style-type: none">1. Centrifuge at 5,000xg for 5min.2. Carefully open the tube and add 100ul of sterile water to dissolve the DNA.3. Close the tube and incubate for 10 minutes at room temperature.4. Briefly vortex the tube and then do a quick spin (less than 5000xg) to concentrate the liquid at the bottom.5. Store the suspended plasmid at -20°C. The DNA is stable for at least one year from date of shipping when stored at -20°C. |
| RefSeq: | NM_145434.1 |
| RefSeq Size: | 2627 bp |
| RefSeq ORF: | 1848 bp |
| Locus ID: | 217166 |
| UniProt ID: | Q3UV55 |
| Cytogenetics: | 11 D |
| Gene Summary: | This gene encodes a transcription factor that is a member of the nuclear receptor subfamily 1. The encoded protein is a ligand-sensitive transcription factor that negatively regulates the expression of core clock proteins. In particular this protein represses the circadian clock transcription factor aryl hydrocarbon receptor nuclear translocator-like protein 1 (Arntl). This protein may also be involved in regulating genes that function in metabolic, inflammatory and cardiovascular processes. [provided by RefSeq, Feb 2014] |