

Product datasheet for **MG209425**

Zscan2 (NM_009553) Mouse Tagged ORF Clone

Product data:

Product Type:	Expression Plasmids
Product Name:	Zscan2 (NM_009553) Mouse Tagged ORF Clone
Tag:	TurboGFP
Symbol:	Zscan2
Synonyms:	Zfp-29; Zfp29
Mammalian Cell Selection:	Neomycin
Vector:	pCMV6-AC-GFP (PS100010)
E. coli Selection:	Ampicillin (100 ug/mL)



[View online »](#)

ORF Nucleotide Sequence:

>MG209425 representing NM_009553
 Red=Cloning site Blue=ORF Green=Tags(s)

TTTTGTAATACGACTCACTATAGGGCGGCCGGAATTCGTCGACTGGATCCGGTACCGAGGAGATCTGCC
 GCC**CGGATCGCC**

ATGGCAGCCGAAGTGCCAGCAGTGAGCACTCCCCTCAGCCCTTTGGTTACAGTACCTCAAGAAGAAGATG
 AACAGGCAGAGGTCACCACTATGATCCTGGAGGATGACGCGTGGGTGCAGGAAGCAGTGCTGCAGGAGGA
 TGGCCCTGAGTCTGAGCCCTTTCCCAAGAGTGCTGAAAAAGCAGCCCCAGGAGGAGGACGCAGCCGAG
 GGACCCAGGGTCTCTTGTCCGATTTCCGGAGCTCTGTCGGCGCTGGCTGAGGCCAGAGGTGCACACTA
 AGGAGCAGATGCTAACTGTGCTGCCAAGAGAAATTCAGGCCTGGCTGCAAGAACATCGGCCCTGAGAGCAG
 TGAGGAGGCAGTGGCCCTGGTGAAGACCTGACCCAGACTTTTCGGCACAGTGATTTTGAGATACAGAGC
 GAGAATGGGGAGAACTCAAATGAAGACATGTTTGGGGTGTGGAGTACATGGGATGTTCTTGAACATCT
 CTGGAGGGGAAGGTGGTCAAGCTGATGGGGACAGTACTTTGAGAGAGACTGTGGCTCTGGAGGCC
 CCAGGGACATGCCCGGGTGGAGACCCAGGGTCTGCCATCGGAAGGAAGGGAAGTTGGCCAGCTAATA
 GGCTTACAGGGCACCTACCTGGGTGAGAAGCCGTATGAATGTCCCAAGTGTGGGAAAACCTTTAGCCGGA
 AATCCACCTTATCACCCATGAGCGGACCCACACAGGAGAAAAACTACAAATGTGATGAATGTGGGAA
 GAGCTTTAGTGACGGCTCGAACTTTAGTAGACACCAACGACTCACACTGGAGAGAAGCCCTACAAATGC
 AGGGACTGCGGGAAGAGCTTTAGCCGGAGTGCGAACCTTATCACGCACCAGAGGATCCACACCGGCGAGA
 AGCCTTTCCAGTGTGCCGAGTGTGGCAAGATTTGAGCAGGAGCCCCAACCTCATCGCCATCAGCGCAC
 GCACACAGGGGAAAAGCCGACTCGTGCCCGAGTGTGGCAAGAGCTTTGGCAACCGGTCCAGCCTTAAT
 ACTCACAGGGCATTACACCCGAGAAAAACCTACGCGTGCAAGGAATGCGGCGAAAAGCTTCAGTTACA
 ACTCCAACCTGATCCGACACAGAGAATCCACACGGGAGAGAAACCATACAAATGCACCGAGTGGCGCCA
 GAAGTTACGCCAGAGCTCCGCGCTATTACGCACCCGAGAACGCACACCCGGGAGAAAGCCCTATCAGTGC
 GCGAGTGCAGCAAGAACTTACGCCGAGCTCCAACTGGCCACTCACCGCGCACCCACCTGGTGGAGA
 AGCCGTACAAGTGCGGGCTGTGCGGCAAGAGCTTACGCCAGAGCTCCAGCCTGATCGCGCACCCAGGGCAC
 GCACACCGGCGAGAAGCCCTACGAGTGCCTCACGTGCGGCGAGAGCTTACGCTGGAGCTCCAACCTCATC
 AAGCACAGCGGACGCACACCGGCGAGAAGCCCTACAGATGCGGCGACTGTGGAAAGGGCTTACGCCAGC
 GCTCGCAGCTCGTGGTGCACCAGCGGACGCACACCGGCGAGAAGCCCTACAAGTGCCTCATGTGTGGCAA
 GAGCTTACGCCGGGGCTCCATTCTGGTGTGCACCAGCGAGCGCCTTGGGAGACAAGCCTTACAGGTGC
 CCGGAGTGCAGGAAAGGGCTTACGCTGGAATCCGTTCTCATCATCCACCAGCGCATCCACACGGGAGAGA
 AGCCCTACAGATGCCCGAGTGCAGCAAGGCTTACGCAACAGCTCCAACCTCATCACACACAGAGGAC
 GCACCTGAAAGAGAAGCTTAC

AG**CGGACCG**ACGCGTACGCGGCCGCTCGAG - GFP Tag - GTTTAA

Protein Sequence:

>MG209425 representing NM_009553
 Red=Cloning site Green=Tags(s)

MAAEVPAVSTPLSPLVQVPQEEDQAEVTTMILEDDAWVQEAVALQEDGPESEFPFQSAGKSPQEEDAAE
 GPQALVRFRELRRWLRPEVHTKEQMLTVLPREIQAWLQHRPESSEEAVALVEDLTQTFRHSDFEIQS
 ENGENSEDMFEGVESHGMFLNISGEGGQQSDGDSDFERDCGSGGAQGHAPGEDPRVVPSEGREVGQLI
 GLQGTYLGEKPYECPQCGKTF SRKSHLITHTERTHTGEKYKDCGKSFSDGSNFSRHTTHTGEKPYK
 RDCGKFSRSPANLITHQRIHTGEKPFQCAECGKFSRSPNLIAHQRTHTGEKPYSCPEGKSFGNRSSLN
 THQGIHTGEKPYACKECGESFSYNSNLIRHQRIHTGEKPYKTECGQKFSQSSALITHRRHTHTGEKPYQ
 GECGNFSRSSLNATHRRTHLVEKPYKGLCGKFSQSSSLIAHQGHTHTGEKPYECLTCGESFSWSSNLI
 KHQRTHTGEKPYRCGDCGKFSQRSQLVVHQRTHTGEKPYKCLMCGKFSRGSILVMHQRAHLGDKPYRC
 PEGKGF SWNSVLIHQRIHTGEKPYRCECGKFSNSSFITHQRTHLKEKLY

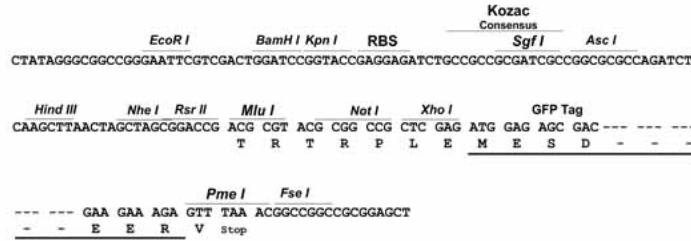
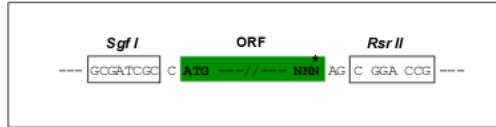
SGP**TRRRLE** - GFP Tag - V

Restriction Sites:

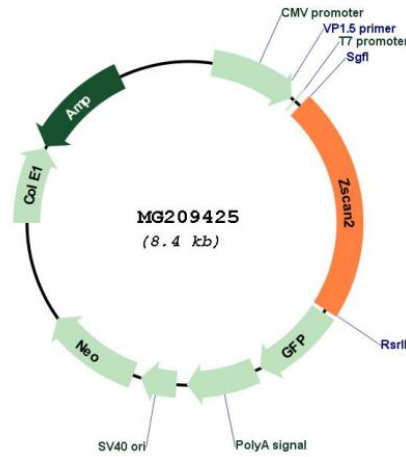
Sgfl-RsrII

Cloning Scheme:

Cloning sites used for ORF Shuttling:



Plasmid Map:



ACCN: NM_009553
 ORF Size: 1842 bp

OTI Disclaimer:	The molecular sequence of this clone aligns with the gene accession number as a point of reference only. However, individual transcript sequences of the same gene can differ through naturally occurring variations (e.g. polymorphisms), each with its own valid existence. This clone is substantially in agreement with the reference, but a complete review of all prevailing variants is recommended prior to use. More info
OTI Annotation:	This clone was engineered to express the complete ORF with an expression tag. Expression varies depending on the nature of the gene.
Components:	The ORF clone is ion-exchange column purified and shipped in a 2D barcoded Matrix tube containing 10ug of transfection-ready, dried plasmid DNA (reconstitute with 100 ul of water).
Reconstitution Method:	<ol style="list-style-type: none">1. Centrifuge at 5,000xg for 5min.2. Carefully open the tube and add 100ul of sterile water to dissolve the DNA.3. Close the tube and incubate for 10 minutes at room temperature.4. Briefly vortex the tube and then do a quick spin (less than 5000xg) to concentrate the liquid at the bottom.5. Store the suspended plasmid at -20°C. The DNA is stable for at least one year from date of shipping when stored at -20°C.
RefSeq:	NM_009553.2 , NP_033579.1
RefSeq Size:	2302 bp
RefSeq ORF:	1845 bp
Locus ID:	22691
UniProt ID:	Q07230
Cytogenetics:	7 45.71 cM
Gene Summary:	May be involved in transcriptional regulation during the post-meiotic stages of spermatogenesis.[UniProtKB/Swiss-Prot Function]