

## Product datasheet for **MG209423**

### Igh (BC053409) Mouse Tagged ORF Clone

#### Product data:

Product Type:	Expression Plasmids
Product Name:	Igh (BC053409) Mouse Tagged ORF Clone
Tag:	TurboGFP
Symbol:	Igh
Synonyms:	Igh6, muH, Igm, IGHM
Mammalian Cell Selection:	Neomycin
Vector:	pCMV6-AC-GFP (PS100010)
E. coli Selection:	Ampicillin (100 ug/mL)



[View online »](#)

**ORF Nucleotide Sequence:**

>MG209423 representing BC053409  
 Red=Cloning site Blue=ORF Green=Tags(s)

TTTTGTAATACGACTCACTATAGGGCGGCCGGGAATTCGTCGACTGGATCCGGTACCGAGGAGATCTGCC  
 GCC**CGGATCGCC**

ATGGAATGGCCTTGATCTTTCTTCTCCTCTGTGACTGAAGGTGTCCACTCCAGGTTAGCTGC  
 AGCAGTCTGGACCTGAGCTGGTGAAGCCTGGGGCCTCAGTGAAGATTTCCCTGCAAGGCTTCTGGCTACGC  
 ATTCAGTAGTCTCGGATGAAGTGGGTGAAGCAGAGGCCTGAAAAGGGTCTTGAGTGGATTGGACGGGTT  
 TATCCTGGAGATGGAGATACTAACTACAATGGGAAGTTCAAGGGCAAGGCCACACTGACTGCAGACAAA  
 CCTCCAGCACAGCCTACATGCAACTCAGCAGCCTGACATCTGAGGACTCTGCGGTCTACTTCTGTCAAG  
 AGACTACGGTAGTAGCTATAGGTTTGCTTACTGGGGCCAAGGGACTCTGGTCACTGTCTCTGCAGAGAGT  
 CAGTCTTCCCAAATGTCTTCCCCTCGTCTCCTGCGAGAGCCCCCTGTCTGATAAGAATCTGGTGGCCA  
 TGGGCTGCCTGGCCGGGACTTCTGCCAGCACCATTTCTTCCCTGGAAGTACCAGAACACCGTGA  
 AGTCATCCAGGATCAGAACCTTCCCAACTGAGGACAGGGGGCAAGTACCTAGCCACCTCGCAGGTG  
 TTGCTGTCTCCCAAGAGCATCCTTGAAGGTTGAGTGAATACCTGGTATGCAAAAACCACTACCGAGGCA  
 AAAACAAAGATCTGCATGTGCCATTCCAGCTGTGCGAGAGATGAACCCCAATGTAAATGTGTTCTGTC  
 ACCACGGGATGGCTTCTCTGGCCCTGCACCACGCAAGTCTAAACTCATCTGCGAGGCCACGAACTTCACT  
 CCAAAACCGATCACAGTATCCTGGCTAAAGGATGGGAAGCTCGTGGAACTGCGTTCACACAGATCCGG  
 TGACCATCGAGAACAAAGGATCCACACCCCAAACTACAAGGTGATAAGCACACTTACCATCTGAAAT  
 CGACTGGCTGAACCTGAATGTGTACACCTGCCGTGGATCACAGGGTCTCACCTTCTTGAAGAAGCTG  
 TCCTCCACATGTGCTGCCAGTCCCTCCACAGACATCCTAACCTTACCATCCCCCCTCTTTGCCGACA  
 TCTTCTCAGCAAGTCCGTAACCTGACCTGTCTGGTCTCAAACCTGGCAACTATGAAACCTGAATAT  
 CTCTGGGCTTCTCAAAGTGGTGAACCACTGGAACCAAAATTAATCATGGAAGCCATCCCAATGGC  
 ACCTTCAGTGCTAAGGGTGGCTAGTGTGTTGTGGAAGACTGGAATAACAGGAAGGAATTTGTGTGTA  
 CTGTGACTCACAGGGATCTGCCTTACCACAGAAGAAATCATCTCAAAACCAATGAGGTGCACAAACA  
 TCCACCTGCTGTACCTGCTGCCACCAGCTCGTGAAGCACTGAACCTGAGGGAGTACAGCCACAGTACC  
 TGCCTGGTGAAGGGCTTCTCTCCTGCAGACATCAGTGTGAGTGGCTTACAGAGGGCAACTTTGCCCC  
 AAGAGAAGTATGTGACAGTGCCTCGATGCCAGAGCCTGGGGCCAGGCTTCTACTTTACCCACAGCAT  
 CCTGACTGTGACAGAGGAGGAATGGAACCTCCGGAGAGACCTATACCTGTGTTGTAAGCCACGAGGCCCTG  
 CCACACCTGGTGAAGGAGGACCGTGGACAAGTCCACTGAGGGGAGGTGAATGCTGAGGAGGAAGGCT  
 TTGAGAACCTGTGAGCACTGCCTCCACCTTCATCGTCTCTTCTCCTGAGCCTTCTACAGCACCAC  
 CGTACCCTGTCAAGGTGAAA

**ACGCGTACGCGGCCGCTCGAG** – GFP Tag – GTTTAA

**Protein Sequence:**

>MG209423 representing BC053409  
 Red=Cloning site Green=Tags(s)

MEWPCIFLFLLSVTEGVHSQVQLQQSGPELVKPGASVKISCKASGYAFSSSWMNWVKQRPKGLEWIGRV  
 YPGDGDNTNYNGKFKGKATLTADKSSSTAYMQLSSLSEDSAVYFCARDYGSSYRFAYWGQGLVTVSAES  
 QSFNPFVPLVSCESPLSDKNLVAMGCLARDFLPSTISFTWNYQNNAEVIQGIPTLRTGGKYLATSQV  
 LLSPKSILEGSDEYLVKIHYGGKNKDLHVPPIVAEMNPNVNFVPPRDGFSGPAPRKSGLICEATNFT  
 PKPITVSWLKDGLVESGFTTDPVTIENKSTPQTYKVISLTISEIDWLNLVYTCRVDHRGLTFLKNV  
 SSTCAASPSTDILTFTIPPSFADIFLSKSANLTCLVSNLATYETLNI SWASQSGEPLKIKIMESHPNG  
 TFSAGVASVCVEDWNNRKEFVCTVTHRDLPSPQKFKISKPNVHKHPPAVYLLPPAREQLNLRRESATVT  
 CLVKGFSPADISVQWLQRGQLLPQEKYVTSAPMPEPGAGFYFTHSILTVTEEWNSGETYTCVVSHEAL  
 PHLVTERTVDKSTEGEVNAEEGFENLWTTASTFIVLFLLSLFYSTTVTLFKVK

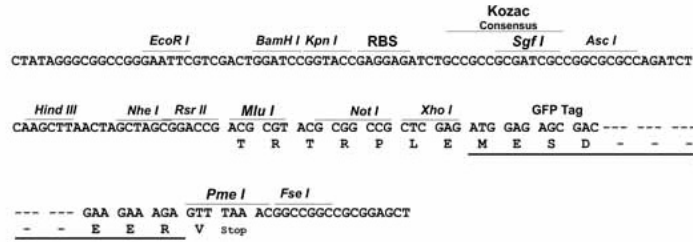
**TRTRPLE** – GFP Tag – V

**Restriction Sites:**

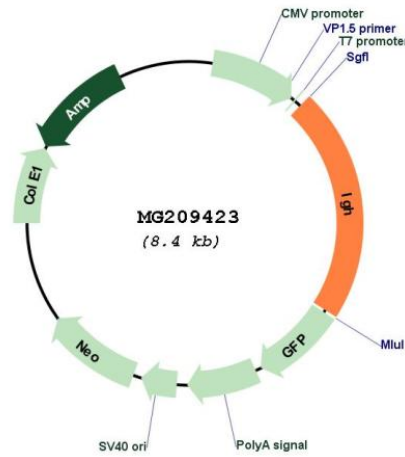
Sgfl-MluI

Cloning Scheme:

Cloning sites used for ORF Shutting:



Plasmid Map:



ACCN: BC053409  
 ORF Size: 1844 bp

<b>OTI Disclaimer:</b>	The molecular sequence of this clone aligns with the gene accession number as a point of reference only. However, individual transcript sequences of the same gene can differ through naturally occurring variations (e.g. polymorphisms), each with its own valid existence. This clone is substantially in agreement with the reference, but a complete review of all prevailing variants is recommended prior to use. <a href="#">More info</a>
<b>OTI Annotation:</b>	This clone was engineered to express the complete ORF with an expression tag. Expression varies depending on the nature of the gene.
<b>Components:</b>	The ORF clone is ion-exchange column purified and shipped in a 2D barcoded Matrix tube containing 10ug of transfection-ready, dried plasmid DNA (reconstitute with 100 ul of water).
<b>Reconstitution Method:</b>	<ol style="list-style-type: none"><li>1. Centrifuge at 5,000xg for 5min.</li><li>2. Carefully open the tube and add 100ul of sterile water to dissolve the DNA.</li><li>3. Close the tube and incubate for 10 minutes at room temperature.</li><li>4. Briefly vortex the tube and then do a quick spin (less than 5000xg) to concentrate the liquid at the bottom.</li><li>5. Store the suspended plasmid at -20°C. The DNA is stable for at least one year from date of shipping when stored at -20°C.</li></ol>
<b>RefSeq:</b>	<a href="#">BC053409</a>
<b>RefSeq Size:</b>	2172 bp
<b>RefSeq ORF:</b>	1844 bp
<b>Locus ID:</b>	16019
<b>Cytogenetics:</b>	12 62.1 cM