

Product datasheet for **MG209396**

Wdr78 (NM_146254) Mouse Tagged ORF Clone

Product data:

Product Type:	Expression Plasmids
Product Name:	Wdr78 (NM_146254) Mouse Tagged ORF Clone
Tag:	TurboGFP
Symbol:	Wdr78
Synonyms:	BC028975
Mammalian Cell Selection:	Neomycin
Vector:	pCMV6-AC-GFP (PS100010)
E. coli Selection:	Ampicillin (100 ug/mL)



[View online »](#)

ORF Nucleotide Sequence:

>MG209396 representing NM_146254
 Red=Cloning site Blue=ORF Green=Tags(s)

TTTTGTAATACGACTCACTATAGGGCGGCCGGAATTCGTCGACTGGATCCGGTACCGAGGAGATCTGCC
 GCC**CGCATCGCC**

ATGCATAGCTCTCCGACGAGCACCCGCAAGCAGGCCAGCTTCGCCGCGAGTGCCAGTGCACAACCAAGGA
 AGTCCATCAGCTTTATTAACCCATCAAAATCAAGTGCAGGGAAAGGATATGCTGCCTCAAACCCAAACAA
 ATTGGCCGTATCAAGAACTATGGTTTTTTAACTGACATGAAGCCGCGCAGAAAACTAAACGTTCTTAGC
 GCTAAACAGTACAGGTGCTTGATTCAAAGGAGTTGATGTCACACCCCGACCTCTTACCATCCAGATC
 CACATGCTGCGTCAGCAAAGCCAAACAACTCTTGACATCACAAGAAGGATCGCTTGGATCAGATTATAT
 TTCTTCTATAGCCTCTATCAGAATACACTAAACCCTAGCATGTTAGGGCAGTACACAAGGTCAGTCCTG
 GGGAGCAGTTCAGTGTGAAGTCAAGCATCTCAACAAGTGAAGTGTGAGGACCTTGAAGATTCTCT
 CTTACAAGAGGGATAGATTGGCCAGTTTTACAGATGTACGAGTTCGAGGTCCACAGCTGAGGCAGCCAT
 ATCAAAGGAAGAGCTGGAGAAGACTATAGAAATCATCCTCACTGAGACGGAACACTGAGATTCTTTGAC
 CTGCCAACAGTCATGTTCTCAACAGAGTCTGAAGAAGCTGAGAAAATAATAGAGAAAAATAAGAAGTATG
 AAACCCCTTTGTAGAAATAGATTAGGCAATGACTTATACGTAGAAAAGATGATGCAGACATTTAATGGAGC
 ACCAAAGAATAAAGAGGTTCAAGTGTGAAAAATCATACTGGAAAGAAAAGGTGTAGTGGCCACTACCTGG
 GATTTGTATGATTCTTACAACATTCAGAACTTTGCTAGCTGCAAAACGATCTGGATATCAAGTAAAG
 GAAGTTTGCCCTGCTAAAGACCGGACCCAAAAATACAAGACAGTGAAGTAGTTCTCTAATGGACATAGA
 AAATGTAATCTGGCTAAAGTTCAGAGGATGAAGAAGACAACCTCAGAGGCAATATTAAGTCTGATAAG
 CTTTCATCAAGACTTATTTACATGGAAAGGTTTTAATGGAAAATGTGTTTCAGCCGAAGCTTGACGCCCT
 ACCGCAACTCCCTGTTTATAAAGAACACGAACCTGAAGAGCCTGAAGAAAATTTGCAAGTGGAAAATCT
 TAAGGTAGCAGAGGACGAGCCGAAGAAGGAAGATGAAGAAGAAGTGGAAAATGGAACCTAGAGCTAGAGATA
 GCTACGGAACAGTCAACAATACCGGCTAATTTGGAACGGCTCTGGTCTTTCTCCTGTGACTTAACGAAAG
 GCCTCAACGTGAGCAGCCTTTCTGGAATAAAGCAAACCCAGACCTTTTGGCTGTTGGCTATGGAACCTT
 TGGATTTAGAGAACAAAAAAGGAATGGCCTGCTGCTGGTCAATAAAGAACCCCATGTGGCCAGAGCGT
 ATTTATCAGAGTTCATATGGAGTTACTTCTGTGGACTTTTCAAACAGCTCACCTAATCTGCTAGCAGTTG
 GCTACCACAATGGCACCCTTGCATTTACAATGTGCAGAGCAGCCACAACATTCCAGTTCGGACAGTAG
 TGAATCACCTCAAAAACATTTGGGACCTGTTTGGCAAGTGCAGTGGATAGAGCAAGACAGAGGAAGTACT
 GGGGATGACAAGAGAGAAATCTTGGTGTCCATATCAGCCGATGGAAGGATCTCCAAGTGGATCATCCGCA
 AAGGACTGGATTGTCATGGACACGAACATCTATCTGGCTGGTACAGAAGAAGGCCTTATTCACAAGTGT
 CTTGTTTCATACAA

ACGCGTACGCGGCCGCTCGAG – GFP Tag – GTTTAA

Protein Sequence:

>MG209396 representing NM_146254
 Red=Cloning site Green=Tags(s)

MHSSPTSTRKQASFAASASAPRKSISFINPSKSSAGKGYAASNPNKLAVSRMGLTDMKPAEKLNVPS
 AKTVQVLDSKGVDPVTPRPLYPHPDPAASAKPNKLLTSQEGSLGSDYISSYSLYQNTLNPSMLGQYTRSVL
 GSSSVSKSSISTTESMSLEDSSYKRDRLASFTDVRVLRSTAEAAISKEELEKTIIEIILTETETLRFDD
 LPTVMFSTEEAEKIIIEKNKYEIETLCRNRLGNDLYVERMMQTFNGAPKNKEVQCEKIIIEEKGVVATTW
 DLYDSYNIPETLLAAKRSYGSSKGSPLAKDRDPKIQDSESSSLMDIENVILAKVQEDEEDNSEAILKSDK
 LHQDLFYMERVLMENVFQPKLAAYRQLPVYKEHEPEEPEETLQVENLKVAEDEPKKEDDEEEVEMELELEI
 ATEQSTIPANLERLWSFSCDLTKGLNVSSLWNKANPDLLAVGYGNFGFREKKGMACCWSIKNPMWPER
 IYQSSYGVTSVDFSNSSPNLLAVGYHNGTVAIYVQSSHNIIPVLDSESPQKHLGPVWQVQWIEQDRGTT
 GDDKREILVSIADGRISKWIIIRKGLDCHGHEHLSGWYRRRPPYSQVFLFIQ

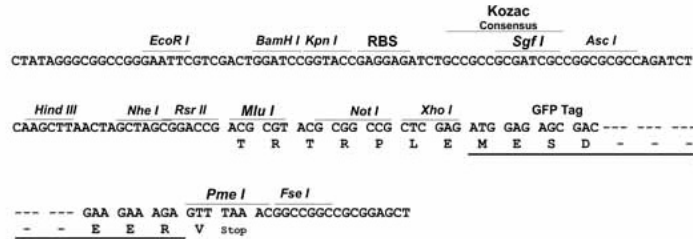
TRTRPLE – GFP Tag – V

Restriction Sites:

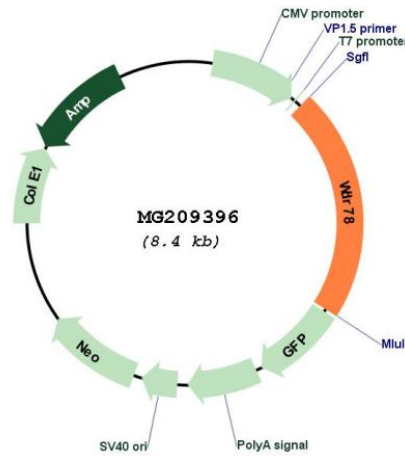
Sgfl-MluI

Cloning Scheme:

Cloning sites used for ORF Shutting:



Plasmid Map:



ACCN: NM_146254
 ORF Size: 1833 bp

OTI Disclaimer:	The molecular sequence of this clone aligns with the gene accession number as a point of reference only. However, individual transcript sequences of the same gene can differ through naturally occurring variations (e.g. polymorphisms), each with its own valid existence. This clone is substantially in agreement with the reference, but a complete review of all prevailing variants is recommended prior to use. More info
OTI Annotation:	This clone was engineered to express the complete ORF with an expression tag. Expression varies depending on the nature of the gene.
Components:	The ORF clone is ion-exchange column purified and shipped in a 2D barcoded Matrix tube containing 10ug of transfection-ready, dried plasmid DNA (reconstitute with 100 ul of water).
Reconstitution Method:	<ol style="list-style-type: none">1. Centrifuge at 5,000xg for 5min.2. Carefully open the tube and add 100ul of sterile water to dissolve the DNA.3. Close the tube and incubate for 10 minutes at room temperature.4. Briefly vortex the tube and then do a quick spin (less than 5000xg) to concentrate the liquid at the bottom.5. Store the suspended plasmid at -20°C. The DNA is stable for at least one year from date of shipping when stored at -20°C.
RefSeq:	NM_146254.1 , NP_666366.1
RefSeq Size:	3376 bp
RefSeq ORF:	2424 bp
Locus ID:	242584
UniProt ID:	E9PYY5
Cytogenetics:	4 C6
Gene Summary:	Plays a critical role in the assembly of axonemal dynein complex, thereby playing a role in ciliary motility.[UniProtKB/Swiss-Prot Function]