

Product datasheet for **MG209378**

Rpn1 (NM_133933) Mouse Tagged ORF Clone

Product data:

Product Type:	Expression Plasmids
Product Name:	Rpn1 (NM_133933) Mouse Tagged ORF Clone
Tag:	TurboGFP
Symbol:	Rpn1
Synonyms:	AU018702; D6Wsu137e; Rpn-1
Mammalian Cell Selection:	Neomycin
Vector:	pCMV6-AC-GFP (PS100010)
E. coli Selection:	Ampicillin (100 ug/mL)



[View online »](#)

ORF Nucleotide Sequence:

>MG209378 representing NM_133933
 Red=Cloning site Blue=ORF Green=Tags(s)

TTTTGTAATACGACTCACTATAGGGCGGCCGGAATTCGTCGACTGGATCCGGTACCGAGGAGATCTGCC
 GCC**CGGATCGCC**

ATGGAGTCGCGGTCGCCTTGCTGTTGCTGCTGCTATGTCTCGGGCCTTGCCCGACGCCGGCA
 GCGCCTCCTCGGAGGCTCCGCCGCTGGTCAACGAGGACGTGAAGCGCACGGTGGACCTGAGCAGCCACCT
 AGCCAAGGTGACGGCTGAGGTGGTCTGTGACACCCGGCGCGGCTCCACATCAGAGCCAGCTCTTTC
 GTTCTGGCCCTGGAGCCAGAAGTGGAGTCGCGGCTTGCACCTAGGCGTGCAGATAAAGGGAGAAGATG
 AGGAAGACAACAACCTAGAAGTACGAGAAACAAAATTAAGGGAAAAGTGGGAGATTTTTCACGGTCAA
 GCTCCAGTTGCTCTTGATCCTGGGTCCAAGATCTCGGTGTTGTGAAACTGTCTACCCCATGTGCTT
 CATCCGTATCCGACTCAGATAACTCAGTCAGAGAAACAGTTCGTCGTGTTGAGGGCAACCATTATTTCT
 ACTCTCCCTATCCAACAAGACCCAGACCATGCGAGTAAACTGGCGTCCCGAAATGTGAAAGCTATAC
 CAAGCTGGGGAACCCCTCGAGATCTGAGGACGTCCTTGATTATGGCCTTTTAAAGACATCCCTGCCTAC
 AGTCAGGACACTTTCAAAGTACATTACGAGAACAATAGCCCTTTCCTGACCATCACCAGTATGACCCGGG
 TCATCGAGGTATCTACTGGGGCAATATTGCTGTGGAAGAGAACGTGGACTTGAAGCACACGGGCGCAGT
 GCTGAAGGGGCTTTCTCCCGTACGATTACCAGAGGCAGCCTGACAGTGGGATCTCCTCCATTCGTTCT
 TTTAAGACCATCCTTCTGCTGCCGCCAGGATGTCTATTACCGGATGAGATTGGTAATGTTTCCACCA
 GCCACCTCCTTATCTGGATGACTCTGTGAAATGAAATCCGGCCTCGATTTCTCTCTTTGGAGGGTG
 GAAGACACACTACATCGTTGGTTACAACCTCCCAAGCTATGAATACCTCTATAATCTGGGTGACCAGTAT
 GCACCTGAAGATGCGGTTTGTAGACCACGTGTTGATGAGCAAGTATAGATTCTCTGACAGTGAAGATCA
 TCTTGCCCGAGGGAGCCAAGAACATCCAGGTGGACAGTCCCTACGATATCAGCCGGGCCAGACAGT
 GCATTATACCTACCTAGACACGTTCCGGCCCGGCTGATTGTGGCTTACAAGAAGAATCTCGTCGAGCAA
 CACATTACAGGACATTGTGGTGCCTACACGTTCAACAAGTTCTCATGCTGCAGGAGCCGCTGCTGGTCTG
 TGGCCGCTTCTACATCCTGTTCTTACCGTCACTCATCTACGTCCTGACTTTTCCATCACCAAGGA
 TCCAGTGCAGAAGCCAGGATGAAAGTGGCCTGTATCACAGAGCAGGCTTAAACCCTGGTCAACAAGAGG
 CTGGCCCTCTACCGTCACTTTGATGAGACTGTCAATAGATAACAAGCAGTCCCGGATATCTTACCTCA
 ACAGTGGCAAGAAGAGCCTAGAGACAGAGCACAAGGCTGTGACCAGCGAGATTGCTGTACTGCAGTCTCG
 GCTGAAGACGGAGGGCTCAGACCTGTGTGACAGGGTGTGAGATGCAGAAGCTGGACGCCAGGTCAAG
 GAGCTGGTCTGAAGTCGCGGTAGAAGCAGAGAGGCTGGTGGCTGGCAAGCTCAAGAAGGATACGTACC
 TGGAAAACGAGAAGCTCAGCTCAGGAAAACGCCAGGAGCTGGTACCAAGATCGACCACATCCTGGATGC
 TCTG

ACGCGTACGCGGCCGCTCGAG – GFP Tag – GTTTAA

Protein Sequence:

>MG209378 representing NM_133933
 Red=Cloning site Green=Tags(s)

MESPVALLLLLLLCLGALAPTPGSASSEAPPLVNEDVKRTVDLSSHLAKVTAEVVLVHPGGGSTRASSF
 VLALEPELESRLAHLGVQIKGEDEEDNNLEVRETKIKGKSGRFFTVKLPVALDPGSKISVVVETVYTHVL
 HPYPTQITQSEKQFVVFEGNHFYSPYPTKTQTMRVKLASRNVESYTKLGNPSRSEDVLDYGPFDIPAY
 SQDTFKVHYENNSPFLTITSMTRVIEVSHWGNIAVEENVLDKHTGAVLKGPFSRYDYQRQPDSSGSIIRS
 FKTIILPAAAQDVYYRDEIGNVSTSHLLILDSSVEMEIRPRFPLFGGWKTHYIVGNLPSYEYLYNLGDQY
 ALKMRFDVHVFDEQVIDSLTVKIIILPEGAKNIQVDSPIYDLSRAPDELHYTYLDTFGRPVIVAYKKNLVEQ
 HIQDIVVHYTFNKVLMLEPLLVAFAFYILFFTVIIYVRLDFSITKDPAAEARMKVACITEQVLTLYNKR
 LGLYRHFDETVNRYKQSRDITLNSGKKSLETEHKAVTSEIAVLQSRKTEGSDLCDRVSEMQLDAQVK
 ELVLKSAVEAERLVAGKLLKDTYLENEKLSGKRQELVTKIDHILDAL

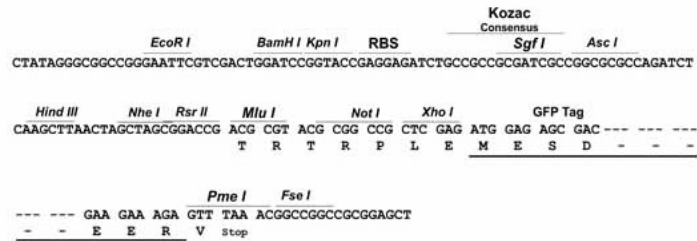
TRTRPLE – GFP Tag – V

Restriction Sites:

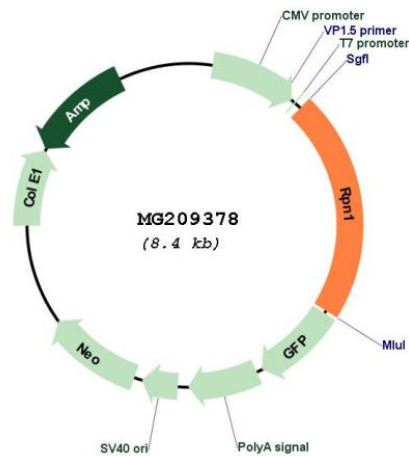
Sgfl-MluI

Cloning Scheme:

Cloning sites used for ORF Shutting:



Plasmid Map:



ACCN: NM_133933
 ORF Size: 3639 bp

OTI Disclaimer:	The molecular sequence of this clone aligns with the gene accession number as a point of reference only. However, individual transcript sequences of the same gene can differ through naturally occurring variations (e.g. polymorphisms), each with its own valid existence. This clone is substantially in agreement with the reference, but a complete review of all prevailing variants is recommended prior to use. More info
OTI Annotation:	This clone was engineered to express the complete ORF with an expression tag. Expression varies depending on the nature of the gene.
Components:	The ORF clone is ion-exchange column purified and shipped in a 2D barcoded Matrix tube containing 10ug of transfection-ready, dried plasmid DNA (reconstitute with 100 ul of water).
Reconstitution Method:	<ol style="list-style-type: none">1. Centrifuge at 5,000xg for 5min.2. Carefully open the tube and add 100ul of sterile water to dissolve the DNA.3. Close the tube and incubate for 10 minutes at room temperature.4. Briefly vortex the tube and then do a quick spin (less than 5000xg) to concentrate the liquid at the bottom.5. Store the suspended plasmid at -20°C. The DNA is stable for at least one year from date of shipping when stored at -20°C.
RefSeq:	NM_133933.4 , NP_598694.3
RefSeq Size:	3601 bp
RefSeq ORF:	1827 bp
Locus ID:	103963
UniProt ID:	Q91YQ5
Cytogenetics:	6 39.13 cM
Gene Summary:	Subunit of the oligosaccharyl transferase (OST) complex that catalyzes the initial transfer of a defined glycan (Glc(3)Man(9)GlcNAc(2) in eukaryotes) from the lipid carrier dolichol-pyrophosphate to an asparagine residue within an Asn-X-Ser/Thr consensus motif in nascent polypeptide chains, the first step in protein N-glycosylation. N-glycosylation occurs cotranslationally and the complex associates with the Sec61 complex at the channel-forming translocon complex that mediates protein translocation across the endoplasmic reticulum (ER). All subunits are required for a maximal enzyme activity.[UniProtKB/Swiss-Prot Function]