

Product datasheet for **MG209361**

Loxl1 (NM_010729) Mouse Tagged ORF Clone

Product data:

Product Type:	Expression Plasmids
Product Name:	Loxl1 (NM_010729) Mouse Tagged ORF Clone
Tag:	TurboGFP
Symbol:	Loxl1
Synonyms:	L; Loxl
Mammalian Cell Selection:	Neomycin
Vector:	pCMV6-AC-GFP (PS100010)
E. coli Selection:	Ampicillin (100 ug/mL)



[View online »](#)

ORF Nucleotide Sequence:

>MG209361 representing NM_010729
 Red=Cloning site Blue=ORF Green=Tags(s)

TTTTGTAATACGACTCACTATAGGGCGGCCGGGAATTCGTCGACTGGATCCGGTACCGAGGAGATCTGCC
 GCC**GCGATCGCC**

ATGGCTCTGGCCGAGCCGGCAGCCAGCTGAGGACCTGGTGTGGAGTGCCTGCCTGTGCGTCTGGTGC
 ACGGGCAGCAAGCGCAGCCAGGACAGGGCTCGGACCCAGGACGCTGGCGGCAGCTGATCCAGTGGGAGAA
 CAACGGGCAGGTGTACAGCTTGTCAACTCGGGCTCTGAGTACGTGCCCGCGGGGCCCAACGAGGGAG
 ACTAGCTCCAGGGTTCTACTGGCAGGCGCGCCCAAACGTCGACGCGGCAGTCAAGGGGGACCCCGGC
 GTCGGCAGGCGCCGTCCCTGCCCTGCCCGACGCGTGGGTTCCGACACTGTGCGCGGCCAAACGCGGCA
 CCCGTTCCGGTTCGGCCAGGTGCCGACAACGGAGAGAGGTGGCCGTCGGGGACAGTACCGGCATGGCT
 CGGGCCCCACCTCCGTCTCCAGCAACGGCACGGGGCTCCGCCTCTCTCGGTTTCGGCTCGGCT
 TCGCCACCACCTATCGCCAGCCATCCTCTACCCGACGAGTTCCCTATCCGACGGCGCCCTTCGTA
 CCAGTATGAGAACTACGATCCCGGTACGGACCTACGAACAGGGCTACGTGTACTACCGTGGTGGGGC
 GCGGCATGGGCGCGGGGCAGCGGCTGTAGCCTCGGCTGGGGTATCTATCCCTTCAGCCCCGGGCGC
 GTTACGAGGACTACGGAGGTGGAGGAGCGAGGAGCAGCCGAGTACCCGGCCAGGGCTTTTACCCAGC
 CCCAGAGAGGCCCTATGTGCCAGCCCAACCCAGCCAGCCAGCCAGCCGACCTCAGCCCCAACCT
 TCCGACGGCTTGACCGTCTACTCGCACAGCCTGTACAATGAAGGCACCCCGGATTTCGAGCAGGCT
 ACCCTGATCCCAGCACCGACGTGTCGACGGCCCCCGGGGGCCGGTGGCACCTACGGTGGCGCTGGCGA
 TCCTCGCTCGGTGGTACCCGCCATGACAGCAATGTGCCACCGAGGCTACGTCCCTCCGCGTGGC
 GTGGAGCCACAGCCCCATTCCGCGTCTGGAGCCACTTACTTGCCCGTGGGAAGCTCTGATGCGCCT
 CCCAGGTGGGAGCGGAACGGCGCCAGCAGGGCCGTCTCAGCGTGGGTAGTGTGTACCGACCCAA
 GAATGGTCGCGGCTCCCTGACTTAGTCCCGACCCCTAACTACGTGCAGGCATCCACATACGTGCAGAGA
 GCCCATCTGACTCCTTGCATGCGCAGCAGAGGAGAAGTGCCTGGCCAGCACAGCCTATGCCCTGAGG
 CTACCGACTATGACCTCCGAGTGTATTGCGCTTCCCCAGCGAGTAAAAACCAAGGCACAGCGGACTT
 TCTCCCCAACGGCCACGCCACACTGGGAGTGGCATAGCTGTCACCAACATTACCACAGCATGGACGAG
 TTCAGCCACTACGACCTGCTTGTGATCCACGGCAAGAAGGTAGCCGAGGGACACAAGGCCAGCTTCT
 GCCTGGAGGACAGCACCTGTGACTTCGGCAACCTCAAGCGCTATGCTGCACCTCTCACACGAGGGCT
 GAGTCCAGGCTGCTATGACACATAAATGCGGACATTGACTGCCAGTGGATCGACATAACTGATGTGAC
 CCTGGAACTACATCCTCAAGGTGCACGTGAACCCCAAGTACATTGTTCTGGAGTCTGACTTCACCAACA
 ACGTGGTGGAGATGCAACATCCACTACACAGGTCGCTACGTTTCTACAACAACTGCAAAATCGTCCAGTC
 C

AG**GCGACCG**ACGCGTACGCGGCCGCTCGAG - GFP Tag - GTTTAA

Protein Sequence:

>MG209361 representing NM_010729
 Red=Cloning site Green=Tags(s)

MALAGAGSQLRTLVSACLVLVHGQQAQPGQSDPGRWRQLIQWENNGQVYSLNLSGSEYVPAGPQRGE
 TSSRVLLAGAPQTSQRRSQGGPRRRQAPSLPLPGRVGS DTVRGQTRHPFGFQVDPDNWREVAVG DSTGMA
 RARTSVSQQRHGGSSASSVSASAFATTYRQPSSYPQFPYPQAPFVNQYENYDPASRTYEQGVVYR GAG
 GGMGAGAAVASAGVIYFPQPRARYEDYGGGGEEQPEYPAQGFYPAPERPYVPQPQPQPQPQPQP
 SDGLDRRYSHSLYNEGTPGFEQAYPDPSTDVVSQAPAGAGGTGGAGDPRLGWYPPYAANVPPEAYVPPRA
 VEPQPPFRVLEPPYL PVRSSDAPSQGGERNGAQQGRLSVGSVYRPNQNGRGLPDLVPDPNYVQASTYVQR
 AHLYSLRCAAEKCLASTAYAPEATDYDLRVLLRFPQRVKNQGTADF LPNRPRHTWEHWSCHQHYSMD E
 FSHYDLLDASTGKVAEGHKASFLEDSTCDFGNLKRYACTSHTQGLSPGCDYTNADIDCQWIDITDVQ
 PGNVILKVHVNPKYIVLESDFTNVVRNCIHYTGRYVSTTNCKIVQS

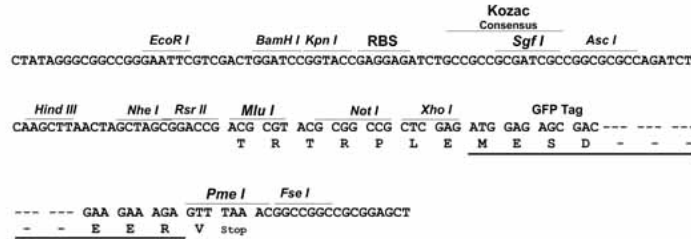
SGP**TRRRLE** - GFP Tag - V

Restriction Sites:

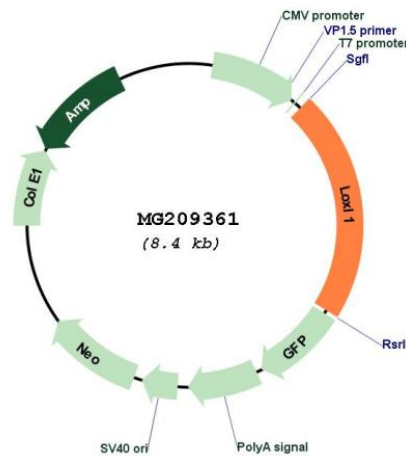
Sgfl-RsrII

Cloning Scheme:

Cloning sites used for ORF Shuttling:



Plasmid Map:



ACCN: NM_010729
 ORF Size: 1821 bp

OTI Disclaimer:	The molecular sequence of this clone aligns with the gene accession number as a point of reference only. However, individual transcript sequences of the same gene can differ through naturally occurring variations (e.g. polymorphisms), each with its own valid existence. This clone is substantially in agreement with the reference, but a complete review of all prevailing variants is recommended prior to use. More info
OTI Annotation:	This clone was engineered to express the complete ORF with an expression tag. Expression varies depending on the nature of the gene.
Components:	The ORF clone is ion-exchange column purified and shipped in a 2D barcoded Matrix tube containing 10ug of transfection-ready, dried plasmid DNA (reconstitute with 100 ul of water).
Reconstitution Method:	<ol style="list-style-type: none">1. Centrifuge at 5,000xg for 5min.2. Carefully open the tube and add 100ul of sterile water to dissolve the DNA.3. Close the tube and incubate for 10 minutes at room temperature.4. Briefly vortex the tube and then do a quick spin (less than 5000xg) to concentrate the liquid at the bottom.5. Store the suspended plasmid at -20°C. The DNA is stable for at least one year from date of shipping when stored at -20°C.
RefSeq:	NM_010729.3
RefSeq Size:	2460 bp
RefSeq ORF:	1824 bp
Locus ID:	16949
UniProt ID:	P97873
Cytogenetics:	9 31.65 cM
Gene Summary:	This gene encodes a member of the lysyl oxidase family of copper-dependent enzymes that catalyze the formation of lysine-derived crosslinks in proteins such as collagen and elastin. The encoded preproprotein undergoes proteolytic processing to generate the mature, functional enzyme. Mice lacking the encoded protein fail to deposit normal elastic fibers in the uterine tract post partum and develop pelvic organ prolapse, enlarged airspaces of the lung, loose skin and vascular abnormalities with concomitant tropoelastin accumulation. [provided by RefSeq, Sep 2016]