

Product datasheet for **MG209350**

Epm2aip1 (NM_175266) Mouse Tagged ORF Clone

Product data:

Product Type:	Expression Plasmids
Product Name:	Epm2aip1 (NM_175266) Mouse Tagged ORF Clone
Tag:	TurboGFP
Symbol:	Epm2aip1
Synonyms:	A930003G21 Rik; mKIAA0766
Mammalian Cell Selection:	Neomycin
Vector:	pCMV6-AC-GFP (PS100010)
E. coli Selection:	Ampicillin (100 ug/mL)



[View online »](#)

ORF Nucleotide Sequence:

>MG209350 representing NM_175266
 Red=Cloning site Blue=ORF Green=Tags(s)

TTTTGTAATACGACTCACTATAGGGCGGCCGGAATTCGTCGACTGGATCCGGTACCGAGGAGATCTGCC
 GCC**CGGATCGCC**

ATGTGGATGACGCCAAGAGATTAGGATGGAAGTCGACGAGGCTCTGGTGTCCGGCCGAGTGGACCC
 AGCGATACCTGGTGGTGGAGCCTGCGGAGGGTGACGGGGCCCTGTGCCTGGTGTGTCGCCGCTGGTTCGC
 CTCTACTCGGGAACGCGACGTGAGGCGCCACTACGAGGCCGAGCACAATTCTACGAGCGGTTTGTAGGG
 GACGAGGAACGCGCGCCCTGGTCGAGCGTCTGCGGCAGGGTGACATGTCTTTGGCCGCGTGTCTACTC
 CGGAGGAGAGAGCGACGCGGGCAGGCCTCGGCCTCTGCCGCTTCTGGCCTTGAAGGGTCGCGGCTGGGG
 TGAGGGTGACTTCGTACACCAGTGCATGGAGGTGTTGCTGAGAGAGGTGCTGCCGGATCACGTGCGGCTC
 CTGGAAGGCATTGACTTGTCTCCAGAGATCACACGGCAGAGGATTCTGAGCATTGACAGCAACCTCCGCA
 GCCAGCTGTTAACCGAGCCAGGGACTTAAGGCCTATCCCTTGTCTTGGATGACCAGGCTTTTGTGGC
 CTATGAGAACTACCTGCTGGTCTTCATCCGTGGCGTCGCGCGCAGCTGGAGGTGCAAGAAGATCTTCTG
 ACGATTATCAACCTGACTCATCACTTCAGTGTGGGGCTCTCATGTCCGCAATTCGGAAGCCCTGCAGA
 CAGCAGGGCTCAGCTTACAGCAATGGTTGGACTGACCACGACCCACACTTAAAGGATGATCGGCGGAA
 CTCCGGACTGGTCTCCTACATGAGAGAGAAGGCCGTGAGTCCCAACTGTTGGAACGTAATCCACTATTCTG
 GGATTTCTTCACTTGGAACTGTTGAGTCTTATGATGTTGATATTAATCAGATCATAAATACCATATCTG
 AATGGGTAGTTATGATTAAGACCAGAGGTGTTAGGCGACCGGAGTTTCAGCCTCTACTAACTGAGTCTGA
 GTCAGAGCATGGTAAAGAGTTAACGGACGGTGTGTTGAACAACGGCTGAGAAGAGGCAAAACGTTAAAA
 CTAATATTTTCTACTAAGAAAAGAAATCGAGGCGTCTTGGTCTCAGTGGGGCAACAACAGTTTATTCT
 CAGACAACGAGTGGCTTTGTGATTTTGGTTCTTGGTAGATATTATGGACTATCTCGAGAGATCAGTGA
 AGAAGTCAGATCAGTAAAGTCTTTGCTGCTGCTGCCTTTGAACGCATCTGCACCTTTGAGGGTAAGCTG
 AGTTCACTTACAGACATATGGAGGAAGTAAATCTAACAGACTTTCCTGCCTTCACTATAATCGTTGATG
 AACTTAAACAGCAGTTTAAAGGAAGATCAAAAAATATTTGATCCTGACAGGTATCAATGGTATCTCCCG
 CCTACAGAAAGATTTTGAAGACATTTTAAAGACCTCAGGTTTCAAAAAAGGACTTAGAACTTTTCTCA
 AATCCATTTAGCTTTAAACCGGAATATGCGCCTATTTCTGTAAGAGTGGAGCTAACAAAACCTCAGGCCA
 AACTGACCTGTGGAATGAGTACAGAGTCAAAGACTTGGGACAGTTTTATGCAGGACTGTCTGGTGAAGC
 TTACCAATTATCAAAGGGTGGCTATAAGGTGGCATCCTATTTGATAGTAACCAGATCTGTGATAAG
 GCTTTTGCATATTTAACTCGAAACCAGCACACATTGAGCCAGCCACTGACGGATGAGCATCTCCAAGCAC
 TGTTTCGAGTTGCCACAACCTGAAATGGATCCTCGTTGGGATGATCTTGTGAGAGAAAAGAAATGATTCC

ACGCGTACGCGGCCGCTCGAG - GFP Tag - GTTTAA

Protein Sequence:

>MG209350 representing NM_175266
 Red=Cloning site Green=Tags(s)

MWMPKIRMEVDEALVFRPEWTQRYLVVEPAEGDGLCLVCRRLVASTRERDVRRHYEAEHEFYERFVG
 DEERAALVERLRQGDMSLA AVL TPEERATRAGLGLCRFLALKGRGWEGDFVHQMEVLLREVLDPHVG
 LEGIDLSP EITRQRILSIDSNLRSQLFNRARDFKAYSLALDDQAFVAYENYLLVIRGVGRDLEVEQEDLL
 TIINLTHHFSV GALMSAILEALQTAGLSLQRMVGLTTHTLRMIGENSGLVSYMREKAVSPNCWNVIHYS
 GFLHLELLSSYVDINQIINTISEWVMIKTRGVRRPEFQPLL TESESEHGERVNGRCLNNWLRRGKTLK
 LIFSLRKEIEAFLVSVGATTVHFSDKQWLCDFGLVDIMDYLREI SEELQISKVFAAAAFERICTFEGKL
 SSLQRHMEEVNL TDFPAFSIIIVDELKQQFKEDQKIFDPDRYQMVISRLQKDFERHFKDLRF IKKDLELFS
 NPFSFKPEYAPISVRVELTKLQANTDLWNEYRVKDLGQFYAGLSGEAYPIIKGVAYKVASLFDNSQICDK
 AFAYLTRNQHTLSQPLTDEHLQALFRVATTEM DPRWDDLVRERND S

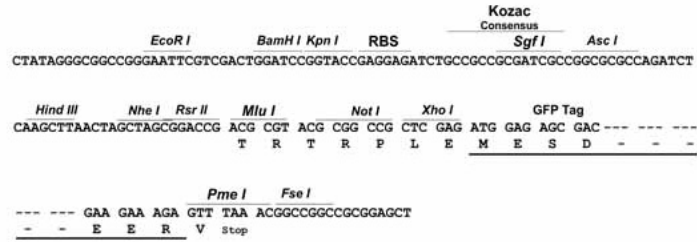
TRTRPLE - GFP Tag - V

Restriction Sites:

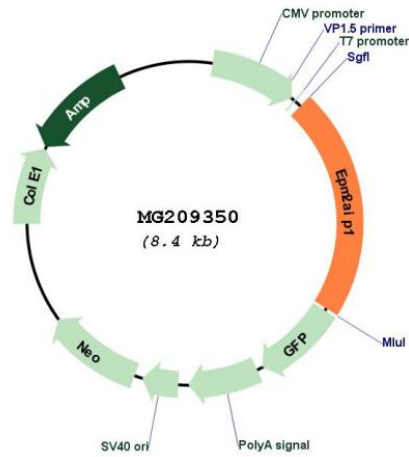
Sgfl-MluI

Cloning Scheme:

Cloning sites used for ORF Shutting:



Plasmid Map:



ACCN: NM_175266
 ORF Size: 1818 bp

OTI Disclaimer:	The molecular sequence of this clone aligns with the gene accession number as a point of reference only. However, individual transcript sequences of the same gene can differ through naturally occurring variations (e.g. polymorphisms), each with its own valid existence. This clone is substantially in agreement with the reference, but a complete review of all prevailing variants is recommended prior to use. More info
OTI Annotation:	This clone was engineered to express the complete ORF with an expression tag. Expression varies depending on the nature of the gene.
Components:	The ORF clone is ion-exchange column purified and shipped in a 2D barcoded Matrix tube containing 10ug of transfection-ready, dried plasmid DNA (reconstitute with 100 ul of water).
Reconstitution Method:	<ol style="list-style-type: none"> 1. Centrifuge at 5,000xg for 5min. 2. Carefully open the tube and add 100ul of sterile water to dissolve the DNA. 3. Close the tube and incubate for 10 minutes at room temperature. 4. Briefly vortex the tube and then do a quick spin (less than 5000xg) to concentrate the liquid at the bottom. 5. Store the suspended plasmid at -20°C. The DNA is stable for at least one year from date of shipping when stored at -20°C.
RefSeq:	NM_175266.2 , NP_780475.1
RefSeq Size:	4246 bp
RefSeq ORF:	1821 bp
Locus ID:	77781
UniProt ID:	Q8VEH5
Cytogenetics:	9 F3