

Product datasheet for **MG209348**

Afp (NM_007423) Mouse Tagged ORF Clone

Product data:

Product Type:	Expression Plasmids
Product Name:	Afp (NM_007423) Mouse Tagged ORF Clone
Tag:	TurboGFP
Symbol:	Afp
Mammalian Cell Selection:	Neomycin
Vector:	pCMV6-AC-GFP (PS100010)
E. coli Selection:	Ampicillin (100 ug/mL)



[View online »](#)

ORF Nucleotide Sequence:

>MG209348 representing NM_007423
 Red=Cloning site Blue=ORF Green=Tags(s)

TTTTGTAATACGACTCACTATAGGGCGGCCGGAATTCGTCGACTGGATCCGGTACCGAGGAGATCTGCC
 GCC**CGCATCGCC**

ATGAAGTGGATCACACCCGCTTCCCTCATCTCCTGCTACATTTGCTGCGTCCAAGCATTGCACGAAA
 ATGAGTTTGGGATAGCTTCCACGTTAGATTCTCCAGTGCGTGACGGAGAAGAATGTGCTTAGCATAGC
 TACCATCACCTTTACCCAGTTTGTTCGGAAGCCACCGAGGAGGAAGTGAACAAAATGACTAGCGATGTG
 TTGGCTGCAATGAAGAAAACTCTGGCGATGGGTGTTAGAAAGCCAGCTATCTGTGTTTCTGGATGAAA
 TTTGTCATGAGACGGAACCTCTAACAAGTATGGACTCTCAGGCTGCTGCAGCCAAAGTGGAGTGGAAAG
 ACATCAGTGTCTGCTGGCAGCAAGAAGACTGCTCCGGCCTCTGTCCACCCTTCCAGTTTCCAGAACCT
 GCCGAGAGTTGCAAAGCACATGAAGAAAACAGGGCAGTTCATGAACAGGTTTCTATGAAGTGTCAA
 GGAGGAACCCCTTCATGTATGCCCCAGCCATTCTGTCTTGGCTGCTCAGTACGACAAGGTCTTCTGGC
 ATGCTGCAAAGCTGACAACAAGGAGGAGTCTCCAGACAAAGAGAGCATCCATTGCAAAGGAATTAAGA
 GAAGGAAGCATGTTAAATGAGCATGTATGTTTCAAGTATAAGAAAATTTGGATCCCGAAACCTCCAGGCAA
 CAACCATTATTAAGCTAAGTCAAAGTTAACTGAAGCAAATTTTACTGAGATTCAGAAGCTGGCCCTGGA
 TGTGGCTCACATCCACGAGGAGTGTGCAAGGAACTCGCTGGAGTGTCTGCAGGATGGGGAAAAAGTC
 ATGACATATATATGTTCTCAACAAAATATTCTGTCAAGCAAAAATAGCAGAGTGTGCAAATACCCATGA
 TCCAAC TAGGCTTCTGCATAATTCACGCAGAGAATGGCGTCAAACCTGAAGGCTTATCTCTAAATCCAAG
 CCAGTTTTTGGGAGACAGAAATTTGCCAATTTTCTTCAGAGGAAAAATCATGTTTATGGCAAGCTTT
 CTTTATGAATACTCAAGAACTCACCCCAACCTTCTGTCTCAGTATTCTAAGAATTGCTAAAACGTACC
 AGGAAATATTGGAGAAGTGTCCAGTCTGGAATCTACCTGGATGTCAGGACAATCTGGAAGAAGAATT
 GCAGAAAACACATCGAGGAGAGCCAGGCACTGTCCAAGCAAAGCTGCGCTCTCTACCAGACCTTAGGAGAC
 TACAAATTACAAAATCTGTTCTTATTGGTTACACGAGGAAAGCCCTCAGCTGACCTCAGCAGAGCTGA
 TCGACCTCACCGGAAGATGGTGAAGTTCCTCCACGTGCTGCCAGCTCAGCGAGGAGAAATGGTCCGG
 CTGTGGTGAAGGAAATGGCCGACATTTTTCATTGGACATTTGTGTATAAGGAATGAAGCAAGCCCTGTGAAC
 TCTGGTATCAGCCACTGCTGCAACTCTTCGATTTCCAACAGGAGGCTATGCATCACCAGTTTTCTGAGGG
 ATGAAACCTATGCCCTCCCCATTCTCTGAGGATAAATTCATCTCCACAAGGATCTGTCCAAGCTCA
 GGGCAAAGCCCTACAGACCATGAAACAAGAGCTTCTCATTAACTGGTGAAGCAAAGCCCTGAAGTACA
 GAGGAGCAGCTGGCGGCTGCTACTGCAGATTTCTCGGCCTTTTGGAGAAGTGTGCAAAGCCAGGACC
 AGGAAGTCTGTTTACAGAAGAGGGTCAAAGTGTATTTCCAAAACCTCGTGATGCTTTGGGCGTT

ACGCGTACGCGGCCGCTCGAG - GFP Tag - GTTTAA

Protein Sequence:

>MG209348 representing NM_007423
 Red=Cloning site Green=Tags(s)

MKWITPASLILLHFAASKALHENEFGIASTLDSSQCVTEKNVLSIATITFTQFVPEATEEEVNMKMTSDV
 LAAMKNSGDGLESQSVFLDEICHETELSNKYGLSGCCSQSGVERHQCLLARKKTAPASVPPFQFPEP
 AESCKAHEENRAVFMNRFIYEVSRRNPFMYAPAILSLAAQYDKVVLACCKADNKEECFQTKRASI AKELR
 EGSMLNEHVCSVIRKFGSRNLQATTIIKLSQKL TEANFTEIQKLALDVAHIHECCQGNLSLECLQDGEKV
 MTYICSQQNILSSKIAECCKLPMIQLGFCCIHAENGVKPEGLSLNPSQFLGDRNFAQFSSEEKIMFMAF
 LHEYSRTHPNLPVSVILRIAKTYQEILEKCSQSGNLPQCQDNLEELQKHIEESQALSKQSCALYQTLGD
 YKLQNLFLIGYTRKAPQLTSAELIDLTKMVSIASTCCQLSEEKWSGCGEGMADIFIGHLCIRNEASPVN
 SGI SHCCNSSYSNRRLCITSFLRDETYAPPPFSEDKFIFHKDL CQAQGGKALQTMKQELLINLVKQKPELT
 EEQLAAVTAADFSGLLEKCKAQDQEVCFTEEGPKLISKTRDALGV

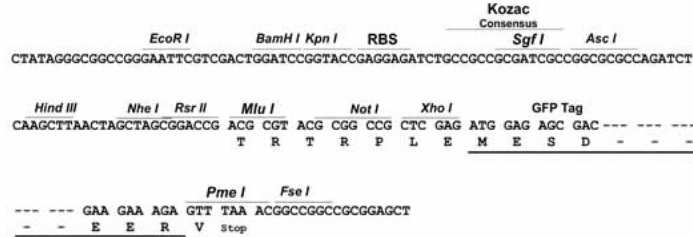
TRTRPLE - GFP Tag - V

Restriction Sites:

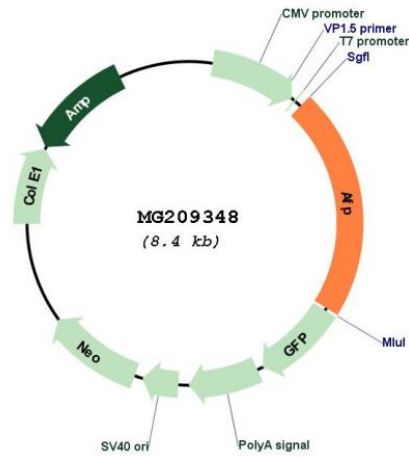
SgfI-MluI

Cloning Scheme:

Cloning sites used for ORF Shutting:



Plasmid Map:



ACCN:

NM_007423

ORF Size:	1815 bp
OTI Disclaimer:	The molecular sequence of this clone aligns with the gene accession number as a point of reference only. However, individual transcript sequences of the same gene can differ through naturally occurring variations (e.g. polymorphisms), each with its own valid existence. This clone is substantially in agreement with the reference, but a complete review of all prevailing variants is recommended prior to use. More info
OTI Annotation:	This clone was engineered to express the complete ORF with an expression tag. Expression varies depending on the nature of the gene.
Components:	The ORF clone is ion-exchange column purified and shipped in a 2D barcoded Matrix tube containing 10ug of transfection-ready, dried plasmid DNA (reconstitute with 100 ul of water).
Reconstitution Method:	<ol style="list-style-type: none">1. Centrifuge at 5,000xg for 5min.2. Carefully open the tube and add 100ul of sterile water to dissolve the DNA.3. Close the tube and incubate for 10 minutes at room temperature.4. Briefly vortex the tube and then do a quick spin (less than 5000xg) to concentrate the liquid at the bottom.5. Store the suspended plasmid at -20°C. The DNA is stable for at least one year from date of shipping when stored at -20°C.
RefSeq:	NM_007423.4
RefSeq Size:	2064 bp
RefSeq ORF:	1818 bp
Locus ID:	11576
UniProt ID:	P02772
Cytogenetics:	5 44.77 cM
Gene Summary:	Binds estrogens, fatty acids and metals.[UniProtKB/Swiss-Prot Function]