

Product datasheet for **MG209343**

Slc44a3 (NM_145394) Mouse Tagged ORF Clone

Product data:

Product Type:	Expression Plasmids
Product Name:	Slc44a3 (NM_145394) Mouse Tagged ORF Clone
Tag:	TurboGFP
Symbol:	Slc44a3
Synonyms:	BC010552
Mammalian Cell Selection:	Neomycin
Vector:	pCMV6-AC-GFP (PS100010)
E. coli Selection:	Ampicillin (100 ug/mL)



[View online »](#)

ORF Nucleotide Sequence:

>MG209343 representing NM_145394
 Red=Cloning site Blue=ORF Green=Tags(s)

TTTTGTAATACGACTCACTATAGGGCGGCCGGAATTCGTCGACTGGATCCGGTACCGAGGAGATCTGCC
 GCC**CGGATCGCC**

ATGGGTTATTCGGTGGTGGCCGGGCGAGCAGGAAGACTCCTCTTTGGATATGACAGCTTTGGCAACGTGT
 GTGGCAAGAAGAACTCCCAAGTGAAGGAGCCCCCTCTCCGGGAGGACATGACTCTAAAAAACACGT
 GTTCTTTATGAATGCCTGCAATCTTGAAGTCAAAGACAGGGTCTTGGTCCACAGCCCTCTGTGTATCC
 AGCTGTCTGAGAAGCAGCTGGACACTCTGGAAGAGGTCCAGCTTTTGGCAACATCAACGGCTCTTTCC
 TGTGTGTGTATAGTTGAATTCCTTCAACTACACTCAGAGTTCAAGTGCAGACACACTGTGTCCCAGGCT
 CCCGGTTCCTCAAGCAAGCCCTTCCCTATTTAACCGGTGCATCCCTCAGACACCCGAGTGCTATTCC
 TTGTTTGCATCAGTCTTGATAAATGATGCGGACGCTCTCCATCGGATTCTAAGTGAATAATGGCGGGAA
 GAGACACCATCCTCGGCCTGTGTCTTACATTCGCCCTGTCTCTGGCCATGTTGTTCCGCTTCCGGTT
 CATCTCGACCCTTCTGATCCACATTATCATCTCCTTGGTCATTTTGGGATTGCTGTTCTGCTGCGGTGTC
 TTATGGTGGCTGTATTATGACTACACCAACGACCTCAGTACAGAAGTGGACACAGAAAAGGAGAATATGA
 ATTGTATGCTAGCCTTTGCCATCATCTCTACAGTCGTGACAGTCTTCTCCTGGCCTTGATTTTTACCTT
 CAGGAAGAGGATAAAATTGACAGTTGAGCTTCTCCACGTCACAAACAAAGCCATCAGCAGCTGCTCTTTC
 CTGCTGTTCCAGCCACTGTGGACGTGTGCCATCCTCATTTTCTTCTGGTCCCTCTGGGTGGCTGTGCTGC
 TGAGCCTGGGCACTGCTGGTACTGCCAGGTGATGGAAGTGGCCAAGTGAATAAAGCCTCTTTCCGG
 CATTCCGTATATGTGGTGGTACCATTTAATTGGCTCATCTGGACTAGCGAATTCATCCTTGATGCCAG
 CGGATGACTGTAGCAGGAGCAATGGTTGCTTGTATTTCAACAGGAATCAAAATGACCCTCTGCCCGTC
 CAATCCTTTCTGCTCTCTTCGACTTTTCTGCTACCATCAAGAACTGCGGTGAAAGGGTCATTTTTACT
 CACTGTGACAAGGATCCCAAGAGTCATTTTCATGTGATTTATAGCACTCTGAAAGAGCCGAGCGCAGT
 GCTTGGTCAAGAGGTGAATTCAGATGCAGCCACTGTGGGCTTTGGTGTCTCCTTAAATATCTGTACCATC
 TCAACCAGGATGCGTACACTGCAACTGCCATTAACGGGACAGACTTTTGTACATCCGAAAAGATGCGCA
 CACAATCATAGCCAAGAATTCAAGTCACTCACGTCTGTTAACTGCTTTGGAACTTTGTCAATTTCTG
 GGAAAGGTGCTAGTGGTGTGCTTACGATTTTCCGGGGTCTGATGGCGTTAACTACAGCCGTGCGCTCC
 AGGTGTGGCCATCCCTCTGCTGCTGGTGCCTTTTTTGCCTGTGTGGTGGCTCACAGTTTCTATCCGT
 GTTTGAACTGCGCTGGATATCCTTTTCTGTGCTTTGCTGTGGACCTGGAACAATGACGGATCGTCC
 GAGAAACCGTACTTTATGGACCCAGGGTTTTTGTGTTATAAAACGGACCAACAACCTTGAACAATGCCA
 AGTCTCAAGGACAAAAGGATGCTTTACCAATGAAGAGGGGACAGAAGTCCAGCCCATTTGTGAGA

ACGCGTACGCGGCCGCTCGAG - GFP Tag - GTTTAA

Protein Sequence:

>MG209343 representing NM_145394
 Red=Cloning site Green=Tags(s)

MGYSVVAGAAGRLLFGYDSFGNVCGKKNPVEGAPLSGQDMTLKKHVFFMNACNLEVKDRGLGPTALCVS
 SCPEKQLDLEEVLQFANINGSFLCVYSLNSFNYSQSSADTLCPRLPVPPSKPFPLFNRCIPQTPECYS
 LFASVLINDADALHRILSGIMAGRDTILGLCVFTFALSLAMLFAFRFISTLLIHIIISLVILGLLFVCGV
 LWWLYDYTNDLSTELDEKENMNCMLAFAIISTVVTVLLLALIFTLRKRIKLTVELLHVTNKAISSCPF
 LLFQPLWTCAILIFFWLVWAVLLSLGTAGTAQVMEGGQVEYKPLSGIRYMWYHLIGLIWTSEFILACQ
 RMTVAGAMVACYFNRNQNDPPARPILSSLFVLFYHQGTAVKGSFLLTVTRIPRIVFMCIYSTLKEPQRS
 AWSRGEFRCSHCGLWCLLKYLYHLNQDAYTATAINGTDFCTSAKDAHTIIAKNSSHLTSVNCFGNFVIFL
 GKVLVVCFSIFGGLMAFNYSRALQVWAIPLLLVAFVACVVAHSFSLVFETALDILFLCFVLDLETNDGSS
 EKPYFMDPGFLSVIKRTNNLNNAKSQGGKDALPNEEGTELQPIVR

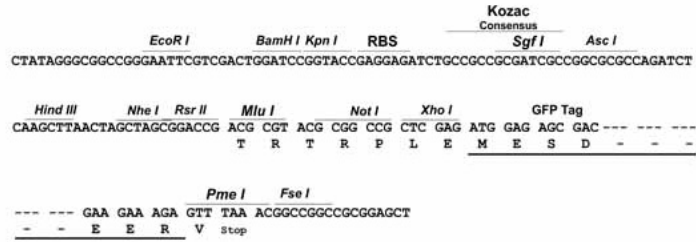
TRTRPLE - GFP Tag - V

Restriction Sites:

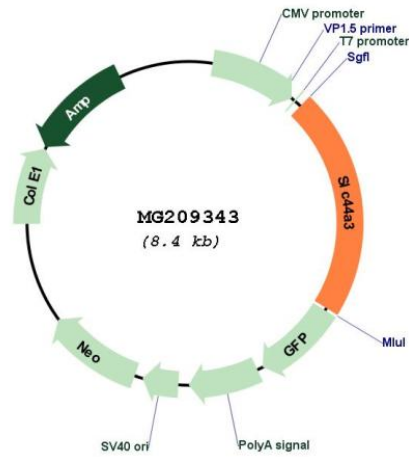
Sgfl-Mlul

Cloning Scheme:

Cloning sites used for ORF Shutting:



Plasmid Map:



ACCN: NM_145394

ORF Size: 1815 bp

OTI Disclaimer:	The molecular sequence of this clone aligns with the gene accession number as a point of reference only. However, individual transcript sequences of the same gene can differ through naturally occurring variations (e.g. polymorphisms), each with its own valid existence. This clone is substantially in agreement with the reference, but a complete review of all prevailing variants is recommended prior to use. More info
OTI Annotation:	This clone was engineered to express the complete ORF with an expression tag. Expression varies depending on the nature of the gene.
Components:	The ORF clone is ion-exchange column purified and shipped in a 2D barcoded Matrix tube containing 10ug of transfection-ready, dried plasmid DNA (reconstitute with 100 ul of water).
Reconstitution Method:	<ol style="list-style-type: none">1. Centrifuge at 5,000xg for 5min.2. Carefully open the tube and add 100ul of sterile water to dissolve the DNA.3. Close the tube and incubate for 10 minutes at room temperature.4. Briefly vortex the tube and then do a quick spin (less than 5000xg) to concentrate the liquid at the bottom.5. Store the suspended plasmid at -20°C. The DNA is stable for at least one year from date of shipping when stored at -20°C.
RefSeq:	NM_145394.1 , NP_663369.1
RefSeq Size:	2572 bp
RefSeq ORF:	1971 bp
Locus ID:	213603
UniProt ID:	Q921V7
Cytogenetics:	3 G1