

## Product datasheet for **MG209319**

### **Dcp1a (NM\_133761) Mouse Tagged ORF Clone**

#### **Product data:**

Product Type:	Expression Plasmids
Product Name:	Dcp1a (NM_133761) Mouse Tagged ORF Clone
Tag:	TurboGFP
Symbol:	Dcp1a
Synonyms:	1110066A22Rik; 4930568L04Rik; AU019772; D14Erttd817e; Mitc1; SMIF
Mammalian Cell Selection:	Neomycin
Vector:	pCMV6-AC-GFP (PS100010)
E. coli Selection:	Ampicillin (100 ug/mL)



[View online »](#)

**ORF Nucleotide Sequence:**

>MG209319 representing NM\_133761  
 Red=Cloning site Blue=ORF Green=Tags(s)

TTTTGTAATACGACTCACTATAGGGCGGCCGGGAATTCGTCGACTGGATCCGGTACCGAGGAGATCTGCC  
 GCC**CGCATCGCC**

ATGGCACTTTCTGTTCCACAGTCCGCCCCCGCCGGAGGGGCTCGGCTCTGAGATCCAAGATGGAGTTGT  
 TGAGTCGAGCTGAGCAAGAGATGAGTCTGGCGGCCTTGAACAACACGACCCCTATATCACCAGCATCGC  
 AGACCTCACGGGCCAGGTCGCCCTGTACTTTCTGCCCAAGCCAACCAAGTGGGAGAAGACTGATATA  
 GAAGGGACGTTATTTGTATACCGAAGGTGAGTTCGCCTTACCATGGCTTACCATTGTCAACCGACTGA  
 ACATGCACAATCTGGTTGAGCCAGTGAATAAGATTTGGAATTTGAGTCCATGAACATTTCTTCTGTA  
 TAGAAATGCAAGTTGTCAATATACAGTATCTGGTTCTATGACAAGAATGACTGTCATCGCATAGCAAAA  
 CTCATGGCTGATGTGGTAGAAGAGGAGACACGGCGATCCCAGCAGGCTGCTCGAGATAAACAGAGTCCCA  
 GCCAGGCCAATGGCTGCAGCGACCAGAGGCCCATAGATATCCTGGAGATGCTGAGCCGGGCCAAGGATGA  
 GTATGAGAGGAATCAGATGGGCGGCTCAAATATCTCCAGTCTGGGCTACAGCCAAGCACTCAGCTCTCT  
 AATCTGGGAAGCACCGAGACTCTAGAAGAGACACCCTCTGGGTACAGGATAAGTCTGCTCCGTCTGGTC  
 ATAAACATCTGACAGTAGAAGAGTTATTTGGAACCTCCTTGCCAAAGGAACAACCAACAGCTATGGGTCT  
 AGAGTCAGAGGACACAGACAAGCTGCTGGGAGATGCATCACAGAAAGAGCCAGCTCATTCTCCCATTT  
 CCCTTTGAGCAGTCAGGGGGAGCCCTCAGTCTGAAAACCTGGGTATCCATTCTGCCGCTCACCACACAG  
 TTCAGCCTGAAGTCAGCACCCCAAGTGTGATCACTCCCGCTCCATTGCACAGTCGGGTGACAAACATCC  
 CCCAAGCTACAGCTCCCACTGAGCCCTGTCTCAGCCCCACTCTGCCAGCTGAAGCTCTACCACACAA  
 GTTCCCACTTACCTCGGAATAGCACCATGATAACAAGCAGTAAAGACCACACCCAGGCAGAAATCTCCAC  
 TCCTGAACCCAGCAGTCCCTGAGCTAAGCCACAGCAGTCTGGTTGCTAGCCAGAGCCCTTCAGAGCCCC  
 GGTGAGCCTAGCAAACCCAGCTGGCACAGCCCTCCCAAGCGTTGATCTGCTTCAGAAACTCAGTTGAGCC  
 CCACAGCATGACCAAATACAAGCACAGCCGCTTGAAAAGGAACCATGGCGCCAGCTTTTCTTCGGCAG  
 CTGGCCAACTGGCCACCCTGAGAGCTTATAGAACCTTCTTCTAAGACAGCAGCAGCAAGAGCAGCAGT  
 CTCAGCCTCCCTGAGCAACATGGTGTCTTCTCAACCCTCCGGTCTATGCAGCAAACAGGATCTGAA  
 GTATTTTCCAGCCTAAGGTGTTACCCAGTGCCATCCCGATTGCAGGCTCTCCATTGGTTCTGCAACCA  
 CCACAGCAGTATCCTCAGTCTGCTGTCCCCAGTGTGTCCAGCAAACGGTTCCAGGGCCGAGACCT  
 AGAGAGGAAAGCCAGTCCCCCTCTCCCCTCACTGTTGGGACAGCAGAGAGTCAAGAAAGCCTTCCATT  
 ATCCTCAGCAAGTCTCAGCTCCAGGACACACTGATACACCTAATAAAGAATGACTCCAGTCTCTCAGTA  
 CGCTTCATGCAGTTTACTTGCAGTTCTGACCAAGAACAAGACAACCACAACCTA

**ACGCGTACGCGGCCGCTCGAG - GFP Tag - GTTTAA**

**Protein Sequence:**

>MG209319 representing NM\_133761  
 Red=Cloning site Green=Tags(s)

MALSCSTVPRRRGSALRSKMELLSRAEQEMSLAALKQHDPYITSIADLTGQVALYTFCKANQWEKTDI  
 EGTLFVYRRSASPYHGFTIVNRLNMHNLVEPVNKDLEFQLHEPFLLYRNASLSIYSIWFYDKNDCHRIAK  
 LMADVVEEETRRSQQAARDKQSPSQANGCSQRPIDILEMLSRKDEYERNQMGSNISSPGLQPSQLS  
 NLGSTETLEETPSGSQDKSAPSGHKHLTVEELFGTSLPKEQPTAMGLESEDTKLLGDASQKEPSSFLPF  
 PFEQSGGAPQSENLGIHSAHHHTVQPEVSTPVLITPASIAQSGDKHPPSYTLPLSPVLSPTLPAEAPTTQ  
 VPHLPRNSTMIQAVKTTTPRQKSPLLNQPVELSHSSLVASQSPFRAPVSLANPAGTALPSVDLLQKLRLT  
 PQHDQIQAPLQKGTMAPSFSSAAGQLATPESFIEPSSKTAARAASVSLSNMVLAPTLRSMQQNQDPE  
 VFSQPKVLP SAIPIAGSPLVPATTTAVSSVLLSPSVFQQTVPRAADLERKASSPSPLTVGTAESQRKPSI  
 ILSKSQLQDTLIHLIKNDSSFLSTLHAYVLQVLTKNKNHNL

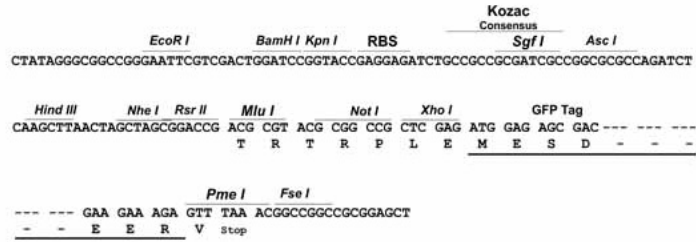
**TRTRPLE - GFP Tag - V**

**Restriction Sites:**

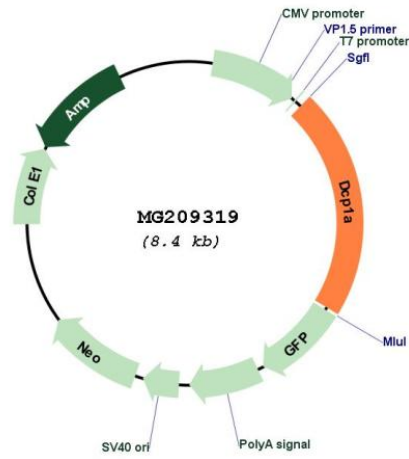
SgfI-MluI

Cloning Scheme:

Cloning sites used for ORF Shutting:



Plasmid Map:



ACCN: NM\_133761

ORF Size: 1806 bp

<b>OTI Disclaimer:</b>	The molecular sequence of this clone aligns with the gene accession number as a point of reference only. However, individual transcript sequences of the same gene can differ through naturally occurring variations (e.g. polymorphisms), each with its own valid existence. This clone is substantially in agreement with the reference, but a complete review of all prevailing variants is recommended prior to use. <a href="#">More info</a>
<b>OTI Annotation:</b>	This clone was engineered to express the complete ORF with an expression tag. Expression varies depending on the nature of the gene.
<b>Components:</b>	The ORF clone is ion-exchange column purified and shipped in a 2D barcoded Matrix tube containing 10ug of transfection-ready, dried plasmid DNA (reconstitute with 100 ul of water).
<b>Reconstitution Method:</b>	<ol style="list-style-type: none"><li>1. Centrifuge at 5,000xg for 5min.</li><li>2. Carefully open the tube and add 100ul of sterile water to dissolve the DNA.</li><li>3. Close the tube and incubate for 10 minutes at room temperature.</li><li>4. Briefly vortex the tube and then do a quick spin (less than 5000xg) to concentrate the liquid at the bottom.</li><li>5. Store the suspended plasmid at -20°C. The DNA is stable for at least one year from date of shipping when stored at -20°C.</li></ol>
<b>RefSeq:</b>	<a href="#">NM_133761.2</a>
<b>RefSeq Size:</b>	5616 bp
<b>RefSeq ORF:</b>	1809 bp
<b>Locus ID:</b>	75901
<b>UniProt ID:</b>	<a href="#">Q91YD3</a>
<b>Cytogenetics:</b>	14 18.75 cM
<b>Gene Summary:</b>	Necessary for the degradation of mRNAs, both in normal mRNA turnover and in nonsense-mediated mRNA decay. Removes the 7-methyl guanine cap structure from mRNA molecules, yielding a 5'-phosphorylated mRNA fragment and 7m-GDP. Contributes to the transactivation of target genes after stimulation by TGFB1 (By similarity).[UniProtKB/Swiss-Prot Function]