

## Product datasheet for **MG209313**

### **Arid3a (NM\_007880) Mouse Tagged ORF Clone**

#### **Product data:**

Product Type:	Expression Plasmids
Product Name:	Arid3a (NM_007880) Mouse Tagged ORF Clone
Tag:	TurboGFP
Symbol:	Arid3a
Synonyms:	Bright; Dri1; Drill1
Mammalian Cell Selection:	Neomycin
Vector:	pCMV6-AC-GFP (PS100010)
E. coli Selection:	Ampicillin (100 ug/mL)



[View online »](#)

**ORF Nucleotide Sequence:**

>MG209313 representing NM\_007880  
 Red=Cloning site Blue=ORF Green=Tags(s)

TTTTGTAATACGACTCACTATAGGGCGGCCGGAATTCGTCGACTGGATCCGGTACCGAGGAGATCTGCC  
 GCC**CGCATCGCC**

ATGAAGCTGCAGGCTGTGATGGAGACTCTCATTACAGAGGCAGCAGCGTGCCCGCAGGAAGTGGAGGCTC  
 GGCAGGCTCCACCACCCACCACCTGAGCCACTGGAGTCCGGGCACGGACCACCATGACAGATGAGGA  
 CAGGGAGCCTGAGAATGCCCGGATGCATAGGACTCAGATGGCCGCACTGGCTGCCATGCGAGCTGCTGCT  
 GCCGGCTTGGGACATCCGTCTCTCCCGGGGGCTCTGAGGATGGGCTCCCATCTCTGGGGATGAAGACA  
 CAGCCCGGAAGGGACTCTGAGTTCACCTGCCCTGCATGGAAGTGTCTGGAGGGAGCAGGACACGCTGA  
 GGGAGATAGGCATTTGATGGACGTGGGCTCTGATGATGATGACACGAAGTCCAAGTGGGAAGAGCAAGAG  
 CTGGAAGAACTGGGGAGGAGGAAGAGGAGGAGGAAGAGGAAGATGACTTTGAAGAAGAGGAGGAGGAAG  
 AAGAAGGCCTGGCCCCCAGAGTCTGCCAGCCTGGGCACTGCAGGCCTGTTACCCCGCAAGGCCCGCC  
 CGCCAGGCTTCCGTGGAGACGGTGGTCCAGGATGCTGAGTGGCCCTGAGCGTCTGGGACCTGGCCCA  
 GCCACCCAGTCATATGGCATCCAGATGCCACCACCGACCATGGGGACTGGACCTTTGAGGAGCAGT  
 TCAAACAGCTCTATGAACTGGATGCGGACCCCAAGAGGAAAGAGTTCTGGATGACCTTTTCAGTTCAT  
 GCAGAAGCGGGCACTCCAGTGAACCGGATCCCATCATGGCGAAGCAGGTCTCGACCTGTTTATGTTG  
 TATGTGCTGGTGACCGAGAAGGGCGGCCTGGTAGAGGTTATCAACAAGAACTGTGGAGGGAGATCACCA  
 AGGGGCTCAACCTGCCTACCTCCATCACCAGTGTGCCTTCACTTCGGACACAGTACATGAAGTATCT  
 TTACCCCTATGAGTGTGAGAGGGCAGGCCTGAGCAGCCCCAACGAGCTCCAGGCCCATAGACAGCAAT  
 CGCAGGGAGGGCAGGCGCCAGAGCTTCGGTGGCTCACTCTTGCCTACTACCCAGTGGAGCCACAGCA  
 TGCTGCCCTCACCAAGCTACCGGTGACTCCCCGGGCTCGCTGCCAGCACCAATGGCAGTCCCATCAC  
 CCCAGCGCCCAAGATCAAGAAAGACTCGGCCATCCCATCACAGTCCAGGCCCGCTACCTGTATCTTTG  
 GCAGGCCACCCTGTTGTGCGAGCCAGGCTGCGGCGGTGCAAGCTGCGGCAGCCCAAGCAGCCGTTGCGG  
 CCCAGGCAGCCGCTGGAGCAACTCCGGGAGAAGCTGGAATCCACAGAGCCTCCAGAAAAGAAGATGGC  
 CCTAGTGGCCGATGAGCAACAGCGACTCATGCAGCGAGCTGTGCAGCAGAGCTTCTGGCCATGACAGCC  
 CAGCTGCCATGAACATCCGCATCAACAGCCAAGCCTCTGAGAGCCGCCAGGACTCAGCCGTGAGTCTCA  
 CCAGTGCCAACGGGAGCAACAGTATTAGCATGTCCGTGGAGATGAATGGTATTGTATACACAGGTGTGT  
 GTTCGCTCAGCCACCACCTCTACAGCACCTTCCGCCCCGCAAAGGGGGCGTCAAGCAGCATCGGTACC  
 AACACCACCAGGGCAGCCGGACAGGAGCCAGTGGCAGCACTGTACAGCGCGGCCAGGTGGGGCTGCCGG  
 GGGTGTCTACACCACCATGTCTTCTACCTCAAACAACCTCTTGCCT

**ACGCGTACGCGGCCGCTCGAG** – GFP Tag – GTTTAA

**Protein Sequence:**

>MG209313 representing NM\_007880  
 Red=Cloning site Green=Tags(s)

MKLQAVMETLIQRQQRARQELEARQAPPPPPPEPTGVRARTTMTDEDREPENARMHRTQMAALAAMRAAA  
 AGLGHPSSPGGSEDGPPISGDEDTAREGLSSPALHGSVLEAGAGHAEGDRHLMVGSDDDDTKSKWEEQE  
 LEELGEEEEEEEEEDDFEEEEEEGLGPPEASLGTAGLFTRKAPPAQAFRGDGGPRMLSGPERLGP  
 AHPSHMASQMPDPHDGWTFFEEQFKQLYELDADPKRKEFLDDLFSFMQKRGTPVNRIPIMAKQVLDL  
 FMLYVLVTEKGLVEVINKKLWREITKGLNLPTSITSAFTLRTQYMKYLYPYECERRGLSSPNELQA  
 AIDSNRREGRRQSFGGSLFAYSPSGAHSMLPSPKLPVTPPLGLAASNGSSITPAPKIKKDSAIPIT  
 VPGRLPVSLAGHPVVAQAAAQAAAAQAAVAQAALQLREKLESTEPPEKMMALVADEQQRMLQRAV  
 QQSFLAMTALQPMNIRINSQASESRQDSAVSLTSANGSNSISMSVEMNGIVYTGVLFAQPPPTAP  
 SAPGKGGVSSIGTNTTGSRTGASGSTVSGGVGLPGVSTPTMSSTSNNSLP

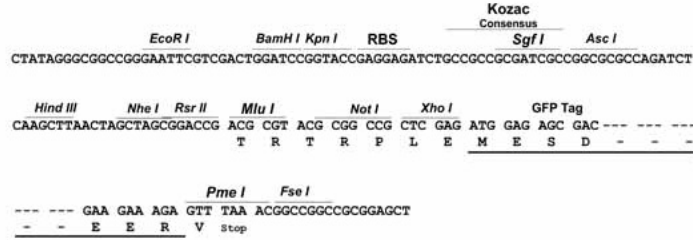
**TRTRPLE** – GFP Tag – V

**Restriction Sites:**

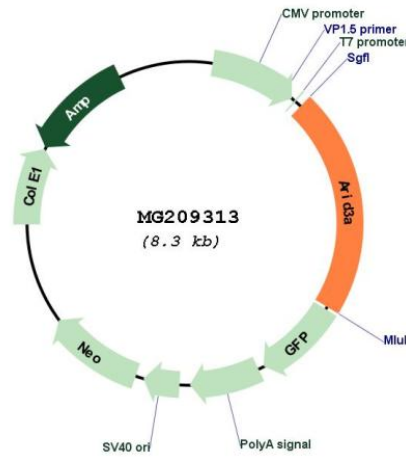
Sgfl-MluI

Cloning Scheme:

Cloning sites used for ORF Shutting:



Plasmid Map:



ACCN: NM\_007880  
 ORF Size: 1803 bp

<b>OTI Disclaimer:</b>	The molecular sequence of this clone aligns with the gene accession number as a point of reference only. However, individual transcript sequences of the same gene can differ through naturally occurring variations (e.g. polymorphisms), each with its own valid existence. This clone is substantially in agreement with the reference, but a complete review of all prevailing variants is recommended prior to use. <a href="#">More info</a>
<b>OTI Annotation:</b>	This clone was engineered to express the complete ORF with an expression tag. Expression varies depending on the nature of the gene.
<b>Components:</b>	The ORF clone is ion-exchange column purified and shipped in a 2D barcoded Matrix tube containing 10ug of transfection-ready, dried plasmid DNA (reconstitute with 100 ul of water).
<b>Reconstitution Method:</b>	<ol style="list-style-type: none"><li>1. Centrifuge at 5,000xg for 5min.</li><li>2. Carefully open the tube and add 100ul of sterile water to dissolve the DNA.</li><li>3. Close the tube and incubate for 10 minutes at room temperature.</li><li>4. Briefly vortex the tube and then do a quick spin (less than 5000xg) to concentrate the liquid at the bottom.</li><li>5. Store the suspended plasmid at -20°C. The DNA is stable for at least one year from date of shipping when stored at -20°C.</li></ol>
<b>RefSeq:</b>	<a href="#">NM_007880.2</a> , <a href="#">NP_031906.1</a>
<b>RefSeq Size:</b>	5327 bp
<b>RefSeq ORF:</b>	1806 bp
<b>Locus ID:</b>	13496
<b>UniProt ID:</b>	<a href="#">Q62431</a>
<b>Cytogenetics:</b>	10 C1
<b>Gene Summary:</b>	Transcription factor involved in B-cell differentiation. Binds a VH promoter proximal site necessary for induced mu-heavy-chain transcription. Binds the minor groove of a restricted ATC sequence that is sufficient for nuclear matrix association. This sequence motif is present in matrix-associating regions (MARS) proximal to the promoter and flanking E mu. Activates E mu-driven transcription by binding these sites. May be involved in the control of cell cycle progression by the RB1/E2F1 pathway.[UniProtKB/Swiss-Prot Function]