

## Product datasheet for **MG209312**

### **Slc17a8 (NM\_182959) Mouse Tagged ORF Clone**

#### **Product data:**

Product Type:	Expression Plasmids
Product Name:	Slc17a8 (NM_182959) Mouse Tagged ORF Clone
Tag:	TurboGFP
Symbol:	Slc17a8
Synonyms:	BC042593; Vglut3
Mammalian Cell Selection:	Neomycin
Vector:	pCMV6-AC-GFP (PS100010)
E. coli Selection:	Ampicillin (100 ug/mL)



[View online »](#)

**ORF Nucleotide Sequence:**

>MG209312 representing NM\_182959  
 Red=Cloning site Blue=ORF Green=Tags(s)

TTTTGTAATACGACTCACTATAGGGCGGCCGGAATTCGTCGACTGGATCCGGTACCGAGGAGATCTGCC  
 GCC**CGGATCGCC**

ATGCCATTTAAAGCATTGATACCTTCAAAGAAAAGATTTGAAACCTGGGAAGGAAGGAGTGAAGAATG  
 CCGTGGGAGACTCGCTGGGCATCTTACAAAGAAAATCGATGGGACCAATGAAGAGGAAGATGCCATTGA  
 GCTGAATGAAGAAGGAAGGCCCGTGCAGACGTCCAGAGCACATCGCCCTGTCTGTGACTGCAGCTGCTGC  
 GGCATCCCAAGCGGTACATCTGTGACTGCAGCTGCTGCGGCATCCCAAAACGGTACATCATTGCTGTCA  
 TGAGCGGCTCGGCTTCTGCATTTCTTTGGGATTCGGTGCAACCTTGGAGTGGCCATTGTGAAAATGGT  
 CAACAATAGCACTGTGTATGTGGATGGGAAACCAGAAATTCAGACAGCGCAGTTAACTGGGACCCAGAG  
 ACGGTGGGCTGATCCATGGATCTTTTTCTGGGGTTATATTGTGACACAAATCCCGGTGGCTTCATTT  
 CAAACAAGTTTGCTGCTAGCAGGTCTTTGGAGCCGCATCTTCTTGACATCAACTCTGAACATGTTTAT  
 CCCTTCTGCGGCGAGGGTGCATTACGGCTGTGTATGGGTGTGAGGATTTGCAGGGTCTGGTGGAGGGT  
 GTGACCTACCCTGCCTGCCATGGGATGTGGAGTAAAGTGGGCGCCTCCCTGGAGAGAAGCCGTCTAGCCA  
 CGACTTCTTCTGTGGTTCTATGCTGGGGCAGTTGTTGCTATGCCTCTTGACAGGGGATTGGTGCAGTA  
 CATTGGCTGGGCTCTGTCTTTACATCTACGGTATGTTGGGATTATTTGGTATATGTTTTGGCTGCTG  
 CAGGCTTATGAGTGGCCGCGAGCTACCCAACAATATCCAATGCAGAAAGGACCTACATAGAGACAAGCA  
 TAGGAGAAGGGGCCAACTTGCCAGTCTGAGCAAATCAACACACCATGGAGAAGGTTTTTACATCCTT  
 GCCTGTCTATGCCATCATTGTGGCAAATCTGTAGAAGCTGGACCTTCTATTGCTCCTGATAAGTCAG  
 CCAGCTTACTTTGAGGAGTCTTTGGATTTGCAATAAGTAAGGTGGTCTCTTGTGACAGTGTCCACACA  
 TGGTGATGACAATCGTGGTGCCCATCGGAGGACAACTGGCTGATTATTTAAGAAGCCGAAAGATTTTGAC  
 CACAACCGCTGTGAGAAAGATCATGAATTGTGGAGGCTTTGGCATGGAGGCAACCTTGTCTCTGGTGGTT  
 GGATTTCCCATACCAAAGGAGTGGCTATCTCCTTCTGGTGGTCTGCTGTAGGATTTAGTGGCTTTGCTA  
 TTTGAGGCTTCAATGTCAACCACCTGGACATTGCTCCACGCTATGCCAGCATCCTCATGGGGATCTCAAA  
 TGGTGTGGGGACCCTCTCTGGAATGGTTTGTCCCTCATTGTTGGTGAATGACTAAGCACAAGACCCGG  
 GAGGAGTGGCAGAATGTGTTCTCATAGCAGCGCTGGTACACTACAGCGGAGTCTCTTCTACGGGGTCT  
 TCGCTTCTGGGAAAAACAGGACTGGGCTGACCCAGAGAATCTCTCTGAGGACAAATGTGGAATCATTGA  
 CCAAGATGAGTTAGCTGAGGAGACAGAACTCAACCACGAGACTTCGTAAGTCCCAGAAAGAAGATGTCT  
 TATGGAGCCACCACCCAGAATTGTGAGGTCCAGAAGACGGAGTGGAGACAACAGAGAGAATCTGCCTTCG  
 ACGGGGAGGAGCCATTATCCTACCAGGCCGAAGGAGACTTCTCAGAAACATCC

**ACGCGTACGCGGCCGCTCGAG - GFP Tag - GTTTAA**

**Protein Sequence:**

>MG209312 representing NM\_182959  
 Red=Cloning site Green=Tags(s)

MPFKAFDTFKEKILKPGKEGVKNAVGDLSGILQKIDGTNEEEDAIELNEEGRPVQTSRAHRPVDCSCC  
 GIPKRYICDCSCCGIPKRYIIAVMSGLGFCISFGIRCNLGVAIVEMVNNSTVYVDGKPEIQTAQFNWDPE  
 TVGLIHGSFFWGYIVTQIPGGFISNKFAASRVFGAAIFLTSTLNMFIPSAARVHYGCVMGVRILQGLVEG  
 VTPACHGMWSKWAPPLERSRLATTSFCGSYAGAVVAMPLAGVLVQYIGWASVFYIYGMFGIIWYMFLL  
 QAYECPAAHPTISNAERTYIETSIGEGANLASLSKFNTPWRRFFTSLPVYAIIVANFCRSWTFYLLLSIQ  
 PAYFEEVFGFAISKVGLLSAVPHVMVTIVVPIGGQLADYLRSRKILTTTAVRKIMNCGGFGMEATLLLIV  
 GFSHTKGVASIFLVAVGFSGFAISGFNVNHLDIAPRYASILMGISNGVGTLSGMVCPLIVGAMTKHKTR  
 EEWQNVFLIAALVHYSGVIFYGVFASGEKQDWADPENLSEDKCGIIDQDELAETEELNHETFVSPRKKMS  
 YGATTQNCQEVQKTEWRQRESAFDGEELSYQAEGDFSETS

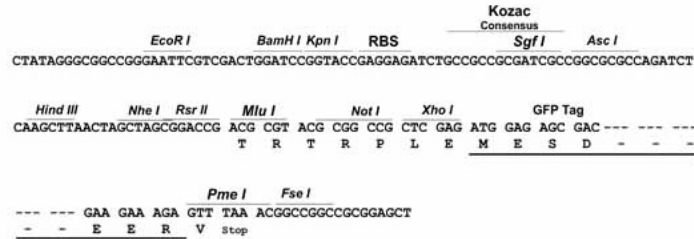
**TRTRPLE - GFP Tag - V**

**Restriction Sites:**

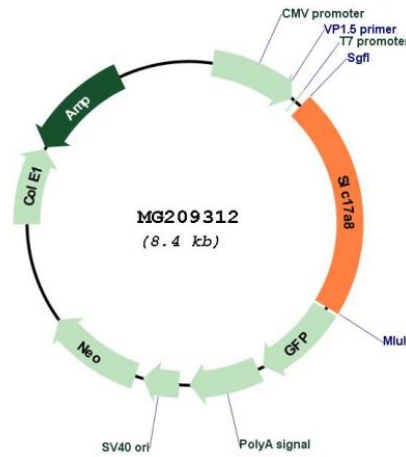
Sgfl-MluI

Cloning Scheme:

Cloning sites used for ORF Shutting:



Plasmid Map:



ACCN: NM\_182959

ORF Size: 1803 bp

<b>OTI Disclaimer:</b>	The molecular sequence of this clone aligns with the gene accession number as a point of reference only. However, individual transcript sequences of the same gene can differ through naturally occurring variations (e.g. polymorphisms), each with its own valid existence. This clone is substantially in agreement with the reference, but a complete review of all prevailing variants is recommended prior to use. <a href="#">More info</a>
<b>OTI Annotation:</b>	This clone was engineered to express the complete ORF with an expression tag. Expression varies depending on the nature of the gene.
<b>Components:</b>	The ORF clone is ion-exchange column purified and shipped in a 2D barcoded Matrix tube containing 10ug of transfection-ready, dried plasmid DNA (reconstitute with 100 ul of water).
<b>Reconstitution Method:</b>	<ol style="list-style-type: none"><li>1. Centrifuge at 5,000xg for 5min.</li><li>2. Carefully open the tube and add 100ul of sterile water to dissolve the DNA.</li><li>3. Close the tube and incubate for 10 minutes at room temperature.</li><li>4. Briefly vortex the tube and then do a quick spin (less than 5000xg) to concentrate the liquid at the bottom.</li><li>5. Store the suspended plasmid at -20°C. The DNA is stable for at least one year from date of shipping when stored at -20°C.</li></ol>
<b>RefSeq:</b>	<a href="#">NM_182959.3</a>
<b>RefSeq Size:</b>	4481 bp
<b>RefSeq ORF:</b>	1806 bp
<b>Locus ID:</b>	216227
<b>UniProt ID:</b>	<a href="#">Q8BFU8</a>
<b>Cytogenetics:</b>	10 C2
<b>Gene Summary:</b>	Mediates the uptake of glutamate into synaptic vesicles at presynaptic nerve terminals of excitatory neural cells. May also mediate the transport of inorganic phosphate. [UniProtKB/Swiss-Prot Function]