

## Product datasheet for **MG209311**

### Hirip3 (NM\_172746) Mouse Tagged ORF Clone

#### Product data:

Product Type:	Expression Plasmids
Product Name:	Hirip3 (NM_172746) Mouse Tagged ORF Clone
Tag:	TurboGFP
Symbol:	Hirip3
Synonyms:	B130036O03; C86302
Mammalian Cell Selection:	Neomycin
Vector:	pCMV6-AC-GFP (PS100010)
E. coli Selection:	Ampicillin (100 ug/mL)



[View online »](#)

**ORF Nucleotide Sequence:**

>MG209311 representing NM\_172746  
 Red=Cloning site Blue=ORF Green=Tags(s)

TTTTGTAATACGACTCACTATAGGGCGGCCGGAATTCGTCGACTGGATCCGGTACCGAGGAGATCTGCC  
 GCC**GCGATCGCC**

ATGGCGCCGGGAGATGAGATGCGAAAATTCCTCGCAGCTTCTTTTCGAGCTTGCCTGGACCTCAGCTCGG  
 TTACGCACGCCATCGTGCACAGAAATTTTATTACAGTGGTGGGATCATCTTGAACCTGAAGAGAA  
 GCAGGCGTTGAAGCGGCTGGTGGAGGAGGAGCTGCCGAAAATGCAGGCGGATGCTGGTACCAGGGAAGGA  
 AAGCCAGACTTTATCAAAGTGAAGAGGTCTCTGCTCCCTGCAGTGACCCAAAGAAGAAAAGTTCCGCT  
 TTAATTCAGAGTCAGAATCCAGCTCTTACCATCCAGTCCAGATGGCTCAGGACCCTCAACAAAGAACAG  
 GACAACCAAGAAGACATGTCTAAGAAGAGCCTTAAAGAAAGCAGTTGAGAGCACAGATGAAGACCACAA  
 ACAGACCTGGATGCAAAGATGGGATTGGAGGAGAGCAGTGAGGGGAAGCAGAGGGCTCTGTTAGATCAG  
 GTAAGGTCACCGAGGAAGAGGAGACATGAAACAAGAACAGAAGGGCCAGTTAGAAAGCAAGCTGGGGC  
 CAAAGACAAGCAAGTACCACTCAAGGCAGACAGGAAGCAGTTAGGGAAGAGAGTGGGAGCAGTGAGGAG  
 GAGGCTGTGCTGCAGAGAGCAAAGGTGGAGGGAAGCACAGGTGCTAACTGCCAGGAGGAGAGTGAAGAGA  
 GCGGAGAGGAGAGCCAGCTAAGAAGAAAAGAGCTTAGTGAGCCAGATCCAGAAGTAACAGAGCAGAGAG  
 AACAGCCAGGGAGAGAAAAGACTATAAGCAGAAAAGCAGGCCCTGGGAGGCCAACTGGAGGCTTGCAGAC  
 AGCGAGGCAGAGAAGGAAGGGGGCACAGTGGGCAGTGGGGACAGCAGTGAGGAGGGGGAGGCAGAGAAGG  
 AAGGAGGCACAGTGGGCAGTGGGGACAGCAGTGAGAAGGGGGAGGCAGAGAAGGAAGAGGGCACAGTGGG  
 TAGTGGGGACAGCAGTGGGAGGGAGAAGAGCACTCGGTGAAGAGAAAAGCAAGGTCAGGACCCAGACC  
 GAGAGTGGGAGGAGGCAGAACACAAGCAGCAGGATGACAGTAAACAGCACAGGAGCAAGCAGCTGCTC  
 AAGGCCTACAAAAGTCAAGCAGCCTAGGCAGCAGTAATGGTGACAGTGACACAGAGGGGAAGTGAAGTGA  
 CTTCCAGGCAGGACAAAACACCAAAAGAGGAGGAAGAGCCGCTCTTCCAACAAGAGCTCCAAGAACGGC  
 CAGGCCCGAAGTTGTTTCATCTTTCATCAGATTCCAGTCCAGAACCACAGGTCAGAAGGGCAGGCCGAA  
 GTTCTCATCTTTCATCAGATTCCAGTCCAGAACCACAGGTCGGAAGGCTGCCTCTCGTGTGGAGAGGA  
 CCACCCAGCTGTGGCTAGACTAAAGCGTTACATTCGAGCCTGTGGTGCCACCGAAACTACAAGAAGCTG  
 CTGGGCTCCTGCAGTCCCAAGGCGCGCTGAGTGTCTCAGGGCTGAGCTGGAAGCACTGGGCATGA  
 AGGGGAACCTTCTTGGAGAAGTGTGCGCTCTGAAGCTGCAGCGGGAAGAGGCAGCTGAAGTGGCTGC  
 CCTGGATGTTGCCAATCATCAGCAGTACAGGCCGCCACGAAGACGAAATGCCTGGAACCTTACAGG  
 GAAGGGACCTCCCAGGAGAGACTTATCGCCGAACCTGGACTCAGAAGAGGAGCAGCCGCGCAAGCAC  
 CTCAGACTGGTCCCATATGCGTGATATCATCAGCAGTGACGGTGACAGCAGC

**ACGCGTACGCGGCCGCTCGAG - GFP Tag - GTTTAA**

**Protein Sequence:**

>MG209311 representing NM\_172746  
 Red=Cloning site Green=Tags(s)

MAPGDEMRFTRSFRRACPDLSVTHAIVRQKFLIHVGRDHLEPEEKQALKRLVEEELPKMQADAGTREG  
 KPDFIKVKRSPAPCSDPKKKRFRFNSESESSSPSPDGSSTKNRTTKTCLRRALKKAVESTDEDHQ  
 TDLDAKMGLEESSEGEAEGSVRSKGVTEEEEDMKQEQQKQVVRKQAGAKDKQVPLKADRQVREESGSSEE  
 EAVLQRAKVEGSTGANQEESEESGEEPAKKELSEPRSRNRAERTARERKSYKQKSRPGRPTGGLRD  
 SEAEKEGGTVGSGDSSEEGEAEKEGGTVGSGDSSEKGEAEKEEGTVGSGDSSEEGEEHSVSRKSKVRTQT  
 ESGRRQNTSSRDDSNTQEQAAAQGTTKSGSLGSSNGDSDTEREVSQSAGQNTKEERKSRSSNKSXNG  
 QARSCSSSDSSPEPTGQKGRSSSSSDSGPEPTGRKAASRCGEDHPAVARLKRYIRACGAHRNYKKL  
 LGSCSSHKARLSVLRAELEALGMKGNPSLEKCRALKLQREEAAEVAALDVANIISSTGRPRRRNAWNPSG  
 EGTSPGETYRRTLDSEEEQPRQAPPDWSHMRDIISDGDSS

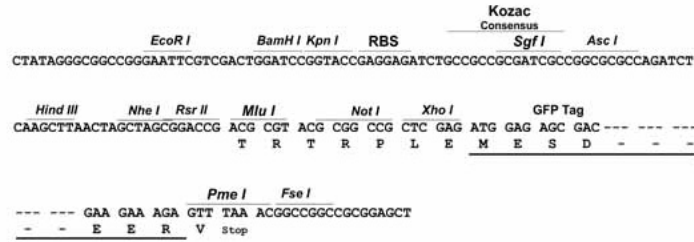
**TRTRPLE - GFP Tag - V**

**Restriction Sites:**

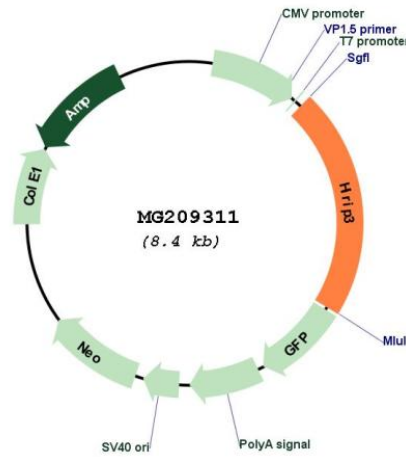
Sgfl-MluI

## Cloning Scheme:

Cloning sites used for ORF Shutting:



## Plasmid Map:



ACCN: NM\_172746

ORF Size: 1803 bp

<b>OTI Disclaimer:</b>	The molecular sequence of this clone aligns with the gene accession number as a point of reference only. However, individual transcript sequences of the same gene can differ through naturally occurring variations (e.g. polymorphisms), each with its own valid existence. This clone is substantially in agreement with the reference, but a complete review of all prevailing variants is recommended prior to use. <a href="#">More info</a>
<b>OTI Annotation:</b>	This clone was engineered to express the complete ORF with an expression tag. Expression varies depending on the nature of the gene.
<b>Components:</b>	The ORF clone is ion-exchange column purified and shipped in a 2D barcoded Matrix tube containing 10ug of transfection-ready, dried plasmid DNA (reconstitute with 100 ul of water).
<b>Reconstitution Method:</b>	<ol style="list-style-type: none"><li>1. Centrifuge at 5,000xg for 5min.</li><li>2. Carefully open the tube and add 100ul of sterile water to dissolve the DNA.</li><li>3. Close the tube and incubate for 10 minutes at room temperature.</li><li>4. Briefly vortex the tube and then do a quick spin (less than 5000xg) to concentrate the liquid at the bottom.</li><li>5. Store the suspended plasmid at -20°C. The DNA is stable for at least one year from date of shipping when stored at -20°C.</li></ol>
<b>RefSeq:</b>	<a href="#">NM_172746.3</a> , <a href="#">NP_766334.1</a>
<b>RefSeq Size:</b>	2511 bp
<b>RefSeq ORF:</b>	1806 bp
<b>Locus ID:</b>	233876
<b>UniProt ID:</b>	<a href="#">Q8BLH7</a>
<b>Cytogenetics:</b>	7 F3
<b>Gene Summary:</b>	May play a role in chromatin function and histone metabolism via its interaction with HIRA and histones.[UniProtKB/Swiss-Prot Function]