

## Product datasheet for **MG209307**

### **Gpr37 (NM\_010338) Mouse Tagged ORF Clone**

#### **Product data:**

Product Type:	Expression Plasmids
Product Name:	Gpr37 (NM_010338) Mouse Tagged ORF Clone
Tag:	TurboGFP
Symbol:	Gpr37
Synonyms:	A1848630; Pael-R
Mammalian Cell Selection:	Neomycin
Vector:	pCMV6-AC-GFP (PS100010)
E. coli Selection:	Ampicillin (100 ug/mL)



[View online »](#)

**ORF Nucleotide Sequence:**

>MG209307 representing NM\_010338  
 Red=Cloning site Blue=ORF Green=Tags(s)

TTTTGTAATACGACTCACTATAGGGCGGCCGGAATTCGTCGACTGGATCCGGTACCGAGGAGATCTGCC  
 GCC**GCGATCGCC**

ATGCCAGCCCGGGCGCGCCTCTCTCGCGCACATCGCGGCTGCTGCTCCTTCTGCTGTTTAAAGTTTCTG  
 TCTCTGCTGCCCTGAGCTTTGTCCCTGAGCCCAGGAATGGAACCTGTCTGGGGGAGAGCTGTCCCACT  
 GATCCAACGCGCAGCAGGGATGCCCGTGACCTGGGAATTCGGCAAAAGACGCTCTGCGAGTCCATGTG  
 CCCAGAGAGAAACTGGAAGCAGAGGTGAGAGGGGCGACCTCTTGGGACCTCCCACCACCCAGGGGCGGTG  
 ACACAGGTGTGATTGAAGAAGCGGCGGCTGCTGGGCCCTTGGGACCTCCAACCAAGCCACCAAGTGCCTG  
 GAGATGAAAAAGTGCCAGGGTAAAGAACCATCCGGGCATTTGAGGAGAAGGGACCCACGGATCCCAA  
 CTCTTCTTTCCGACATCGGAGGGGGGAGAGATGAGTTCCAAGCGCGATGGGATCCCCAGAGCAGGCAGG  
 AGCACAGTGTAAAACGGAACCCAGAGATCTTTTTACTGGCCACGAAGAACTGGACAACCCAGGATTC  
 CCAACACAGGCCCTCAGCAGTACACGAAGGAAGACCCTTGCTCCTCCAGGCAGGGCACTACCGCAAAAC  
 GGGTCTGCAGATGACTGGTTCCCTGACCAAGGGGTCCACGCCGTGGAACACCACGCGCGCGTGAGAT  
 TGAAGAACCCTTCTACCCATTGACCAAGAATCCTACGGAGCCTATGCGGTGATGTGCTTATCTGTGGT  
 GATCTTTGGGACCGGCATTATTGGCAACTTGGCAGTGTGTGCATCGTGTGTACAATTACTACATGAGG  
 AGCATCTCCAATTCTCTCTTGGCCAACCTGGCTTTCTGGGACTTTCTCATCATCTTCTTCTGCCCTCCCC  
 TGGTCACTTCCATGAGTTGACTAAGAAGTGGCTTTTGGGAAGATTTCTCCTGCAAGATCGTGCCTATAT  
 CGAGGTGGCTTCTCTGGGTGCTACTACCTTACCTTATGTGACTGTGCATAGATCGCTTCCGGGCTGCC  
 ACCAAGTCCAGATGACTATGAAATGATTGAAAATTGCTCTCCACCACTGCCAAACTTCCCGTTATCT  
 GGGTTGGAGCTCTGCTTTTGGCCCTCCGGAAGTTGCTCCTCCGACAGTGAGCAAGGAAGATTTGGGCTT  
 TAGTGGCCAGGCTCCTGCAGAACGGTGTGTCATAAAGATCTCCTGATTACCGGACACAATCTATGTT  
 TTGGCTCTCACCTATGATGGTGAAGGCTTTGGTGGTATTTTGGCTGCTACTTTTGTCTGCCACACTTT  
 TCACCATCACCTGCTCTAGTACTGCTCGGAAGATCCGCAAGCGGAGAAGGCCAGTACCCGTGGAAA  
 CAAGCGGCAGATCCATCTAGAGAGCCAGATGAACTGCACAGTGGTGGCTCTGACCATTTTATATGGGTTT  
 TGCATCATCCCTGAGAATATCTGCAACATTGTCACTGCCTACATGGCCACGGGCGTCTCTCAGCAGACCA  
 TGGACCTGCTCAACATCATCAGCCAGTTCCTTTTGTGTTTTCAAGTCTGTGTACCCCCGTGCTCCTCTT  
 CTGCTCTGCAGACCCTCAGCAGGGCCTTATGGAGTGTGCTGCTGCTGTGTGAGGAGTGTATCCAG  
 AAGTCTTCCACTGTGACCAGTGCAGACAACGACAACGAGTACACCACAGAGCTGGAGCTGTCCGCTTCA  
 GTACTATCCGACGGGAGATGTCCACTTTTGCTTCTGTGGGACTCATTGC

**ACGCGT**ACGCGGCCGCTCGAG - GFP Tag - GTTTAA

**Protein Sequence:**

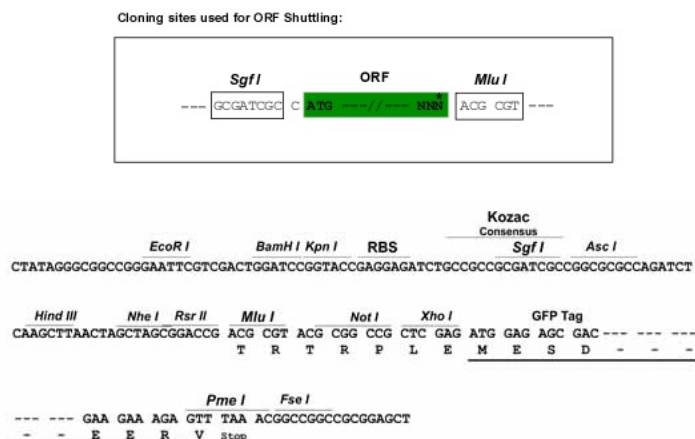
>MG209307 representing NM\_010338  
 Red=Cloning site Green=Tags(s)

MPARGAPLSRTRLLLLLFFKVSVAALSFVPEPRNGTCLGESCSPLIQRRSRDARGPGNSAKDALRVHV  
 PREKLEAEVRGATSWDLPPRGGDTGVIEEAAAAGPLGPPTKPPSAWRWKSQAQKEPSGHLRRRDPDTPQ  
 LFFPTSEGGEMSSKRDGIPQSRQEHSVKTEPRDLFYWPRRTGQLQDSQHRPSAVHEGRTLAPPGRALPQN  
 GSADDWVPDQGGPRRNTTRRVLKPNFYPLTQESYGAYAVMCLSVVIFGTGIIGNLAVMCIVCHNYMR  
 SISNSLLANLAFWDFLIIFFLPLVIFHELTKWLLLEDFSKIVPYIEVASLGVTTFTLCALCIDRFRAA  
 TNVQMYEYMIENCSSTAKLAVIWWGALLLALPEVVLRLQSKEDLGFSGQAPAERCVIKISPDLPTIYV  
 LALTYDGARLWYFQCYFCLPTLFTITCSLVTARKIRKAEKASTRGNKRQIHLESQMNCVVALTILYGF  
 CIIPENICNIVTAYMATGVSQQTMDLLNIISQFLLFKSCVTPVLLFCLCRPFSRAFMECCCCCEECIQ  
 KSSTVTSDDNDNEYTTELELSPFSTIRREMSTFASVGTGHC

**TRTRPLE** - GFP Tag - V

**Restriction Sites:**

Sgfl-MluI

**Cloning Scheme:**


**ACCN:** NM\_010338

**ORF Size:** 1800 bp

**OTI Disclaimer:** The molecular sequence of this clone aligns with the gene accession number as a point of reference only. However, individual transcript sequences of the same gene can differ through naturally occurring variations (e.g. polymorphisms), each with its own valid existence. This clone is substantially in agreement with the reference, but a complete review of all prevailing variants is recommended prior to use. [More info](#)

**OTI Annotation:** This clone was engineered to express the complete ORF with an expression tag. Expression varies depending on the nature of the gene.

**Components:** The ORF clone is ion-exchange column purified and shipped in a 2D barcoded Matrix tube containing 10ug of transfection-ready, dried plasmid DNA (reconstitute with 100 ul of water).

**Reconstitution Method:**

1. Centrifuge at 5,000xg for 5min.
2. Carefully open the tube and add 100ul of sterile water to dissolve the DNA.
3. Close the tube and incubate for 10 minutes at room temperature.
4. Briefly vortex the tube and then do a quick spin (less than 5000xg) to concentrate the liquid at the bottom.
5. Store the suspended plasmid at -20°C. The DNA is stable for at least one year from date of shipping when stored at -20°C.

**RefSeq:** [NM\\_010338.2](#)

**RefSeq Size:** 4372 bp

**RefSeq ORF:** 1803 bp

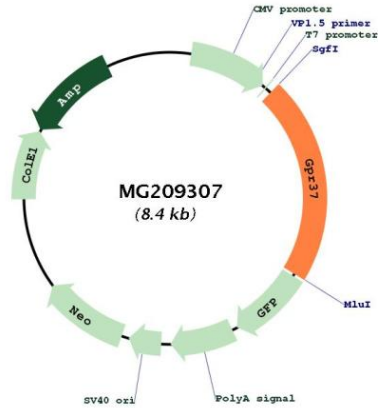
**Locus ID:** 14763

**UniProt ID:** [Q9QY42](#)

**Cytogenetics:** 6 11.65 cM

**Gene Summary:** Receptor for the neuroprotective and glioprotective factor prosaposin. Ligand binding induces endocytosis, followed by an ERK phosphorylation cascade (By similarity). [UniProtKB/Swiss-Prot Function]

**Product images:**



Circular map for MG209307