

## Product datasheet for **MG209306**

### Ints11 (NM\_028020) Mouse Tagged ORF Clone

#### Product data:

Product Type:	Expression Plasmids
Product Name:	Ints11 (NM_028020) Mouse Tagged ORF Clone
Tag:	TurboGFP
Symbol:	Ints11
Synonyms:	2410006F12Rik; AU044035; Cpsf3l
Mammalian Cell Selection:	Neomycin
Vector:	pCMV6-AC-GFP (PS100010)
E. coli Selection:	Ampicillin (100 ug/mL)



[View online »](#)

**ORF Nucleotide Sequence:**

>MG209306 representing NM\_028020  
 Red=Cloning site Blue=ORF Green=Tags(s)

TTTTGTAATACGACTCACTATAGGGCGGCCGGGAATTCGTCGACTGGATCCGGTACCGAGGAGATCTGCC  
 GCC**CGCATCGCC**

ATGCCCGAGATTAGGGTCACTCCCTTGGGGCTGGCCAGGATGTAGGCCGAAGCTGCATCTTGGTCTCCA  
 TTTTCGGGGAAGAATGTCATGTTGGACTGTGGGATGCACATGGGCTACAATGATGACAGGCCGCTTCTCTGA  
 CTTTTCTTACATACCCAGAGTGGCCGCTGACTGACTTTCTGGACTGTGTGATCATCAGCCACTCCAC  
 CTGGACCATTGTGGGCACTCCCCTACTTCAGTGAAATGGTGGGCTACGATGGACCCATCTATATGACCC  
 ATCCTACCCAGGCCATCTGCCCATCTGTTGGAAGACTACCGCAAGATTGCAGTGGACAAGAAGGGCGA  
 GGCCAATTTCTCACTTCTCAGATGATCAAGACTGTATGAAGAAGTGGTGGCTGATCACCTGCACCAG  
 ACAGTTCAGTGGATGATGAGCTGGAATCAAGGCATACTATGCAGGCCACGTCTGGGGCAGCCATGT  
 TCCAGATTAAGTGGGCTCGGAGTCTGTGGTCTACACGGGTGACTATAACATGACCCAGACCGGCATT  
 GGGGGCTCGTGGATTGACAAGTCTGCCCAACTTGCTCATCACAGAATCCACATATGCTACAACCATC  
 CGAGATCCAAACGCTGCAGAGAGCGAGATTTCTAAAGAAAGTTCATGAAACTGTGGAGCGTGGAGGAA  
 AGGTGCTGATTCCTGTGTTTGGCTGGGCCGAGACAAGAAGTCTGCATCCTGCTGGAGACCTTCTGGGA  
 GCGCATGAACCTGAAGGTGCCATATACTTCTCTACGGGCTGACAGAGAAAGCCAACTACTACAAG  
 CTCTTCATCACCTGGACCAACCAGAAGATCCGGAAGACGTTCTGTCAGAGGAACATGTTTGGATTAAGC  
 ACATCAAAGCCTTGGACCGACATTTGCTGACAACCCAGTCCCATGGTTGTGTTGCCACACCTGGGAT  
 GCTGCATGCTGGCAATCCCTGCAAATCTCCGGAAGTGGCAGGAAATGAGAAGAATGTTGTCATCATG  
 CCTGGTTATTGTGCAAGGCACCGTGGCCACAAGATCCTTAGTGGCAACGTAACCTGAAATGGAAG  
 GGCCCGCAGATGCTGGAGGTAAGATGCAAGTGGAAATACATGCTCCTCAGCGCCATGCTGATGCCAAGGG  
 CATCATGCAGCTGGTAGGACAAGCGGAGCCGAGAGTGTCTGTTGGTGCATGGCCGAAGCCAAGAAGATG  
 GAGTTCCTGAGGCAGAAGATTGAGCAGGAATCCGGGTGACGTGTACATGCCGGCCAATGGTGAGACAG  
 TGACGCTGCCACAAGCCCTAGCATCCCTGTGGGCATCTCCCTGGGATTGCTGAAGCGGGAGATGGTGCA  
 GGGGCTGTTGCCTGAAGCCAAAAAAGCTAGGCTTTTACATGGCACCTCATTATGAAAGACAGTAATTTT  
 CGGCTGGTATCCTCAGAGCAAGCCCTGAAGGAGCTGGGCTGGCAGAGCACCAACTTCGTTACCTGTC  
 GTGTGCACCTGCAGGACACACGCAAGAACAAGAAACAGCTTTACGTGTGTACAGCCATCTCAAGAGCAC  
 CCTCAAGGACCACTGTGTACAGCATCTCCCGATGGCTCTGTGACTGTGGAGTCCATTCTAATCCAGGCT  
 GCCGCCATTTCGAGGACCTGTTACCAAGGTGCTATTGGTCTCCTGGACTTACCAGGATGAAGAGCTGG  
 GAAGTTCCTCACAACATTGCTCAAAAATGGCCTTCTCAGGCTCCACG

**ACGCGTACGCGGCCGCTCGAG** - GFP Tag - GTTTAA

**Protein Sequence:**

>MG209306 representing NM\_028020  
 Red=Cloning site Green=Tags(s)

MPEIRVTPLAGAQDVGRSCILVSIISGKNVMLDCGMHMGYNDRRFPDFSYITQSRLTDFLDCVIIISHFH  
 LDHCGALPYFSEMVGYDGPIMTHPTQAIPIILLEDYRKIAVDKKGEANFFTSQMIKDCMKVADHLHQ  
 TVQVDELEIKAYYAGHVLGAAMFQIKVGSSEVVYTGDNMTPDRHLGAAWIDKCRPNLLITESTYATTI  
 RDSKRRCRERDFLKKVHETVERGGKVLIPVFALGRAQELCILLETFWERMNLKVPYIFSTGLTEKANHYK  
 LFIITWNTQKIRKTFVQRNMFQKHIKAFDRFTADNPGPMVVFATPGMLHAGQSLQIFRWAGNEKNMVM  
 PGYCVQGTVGHKILSGQRKLEMEGRQMLEVKMQVEYMSFSAHADAKGIMQLVGQAEPESVLLVHGEAKKM  
 EFLRQKIEQEFRVSCYPANGETVTLPTSPSIPVGISLGLLKREMVQGLLPEAKKPRLLHGTLMKDSNF  
 RLVSSEQALKELGLAEHQLRFTCRVHLQDTRKEQETALRVYSHLKSTLKDHCVQHLPDGSVTVESILIQ  
 AAHSEDPGTVKLLVSWTYQDEELGSFLTLLKNGLPQAPS

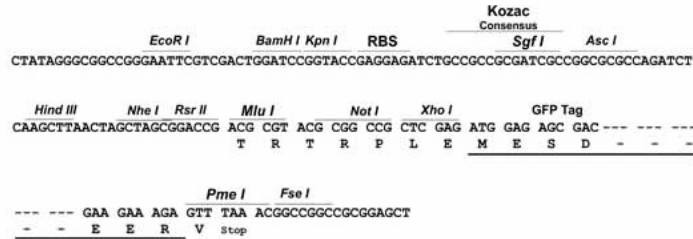
**TRTRPLE** - GFP Tag - V

**Restriction Sites:**

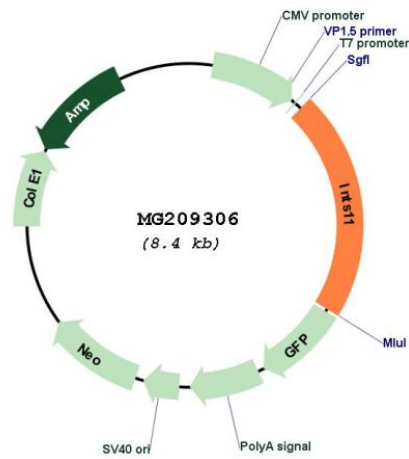
SgfI-MluI

Cloning Scheme:

Cloning sites used for ORF Shutting:



Plasmid Map:



ACCN: NM\_028020

ORF Size: 1800 bp

<b>OTI Disclaimer:</b>	The molecular sequence of this clone aligns with the gene accession number as a point of reference only. However, individual transcript sequences of the same gene can differ through naturally occurring variations (e.g. polymorphisms), each with its own valid existence. This clone is substantially in agreement with the reference, but a complete review of all prevailing variants is recommended prior to use. <a href="#">More info</a>
<b>OTI Annotation:</b>	This clone was engineered to express the complete ORF with an expression tag. Expression varies depending on the nature of the gene.
<b>Components:</b>	The ORF clone is ion-exchange column purified and shipped in a 2D barcoded Matrix tube containing 10ug of transfection-ready, dried plasmid DNA (reconstitute with 100 ul of water).
<b>Reconstitution Method:</b>	<ol style="list-style-type: none"><li>1. Centrifuge at 5,000xg for 5min.</li><li>2. Carefully open the tube and add 100ul of sterile water to dissolve the DNA.</li><li>3. Close the tube and incubate for 10 minutes at room temperature.</li><li>4. Briefly vortex the tube and then do a quick spin (less than 5000xg) to concentrate the liquid at the bottom.</li><li>5. Store the suspended plasmid at -20°C. The DNA is stable for at least one year from date of shipping when stored at -20°C.</li></ol>
<b>RefSeq:</b>	<a href="#">NM_028020.2</a> , <a href="#">NP_082296.1</a>
<b>RefSeq Size:</b>	2348 bp
<b>RefSeq ORF:</b>	1803 bp
<b>Locus ID:</b>	71957
<b>UniProt ID:</b>	<a href="#">Q9CWS4</a>
<b>Cytogenetics:</b>	4 87.66 cM
<b>Gene Summary:</b>	Catalytic component of the Integrator complex, a complex involved in the small nuclear RNAs (snRNA) U1 and U2 transcription and in their 3'-box-dependent processing. The Integrator complex is associated with the C-terminal domain (CTD) of RNA polymerase II largest subunit (POLR2A) and is recruited to the U1 and U2 snRNAs genes. Mediates the snRNAs 3' cleavage. Mediates recruitment of cytoplasmic dynein to the nuclear envelope, probably as component of the INT complex.[UniProtKB/Swiss-Prot Function]