

## Product datasheet for **MG209299**

### **Klc2 (NM\_008451) Mouse Tagged ORF Clone**

#### **Product data:**

Product Type:	Expression Plasmids
Product Name:	Klc2 (NM_008451) Mouse Tagged ORF Clone
Tag:	TurboGFP
Symbol:	Klc2
Synonyms:	8030455F02Rik; AW212649; KLC-2; KLC 2
Mammalian Cell Selection:	Neomycin
Vector:	pCMV6-AC-GFP (PS100010)
E. coli Selection:	Ampicillin (100 ug/mL)



[View online »](#)

**ORF Nucleotide Sequence:**

>MG209299 representing NM\_008451  
 Red=Cloning site Blue=ORF Green=Tags(s)

TTTTGTAATACGACTCACTATAGGGCGGCCGGAATTCGTCGACTGGATCCGGTACCGAGGAGATCTGCC  
 GCC**CGGATCGCC**

ATGGCCACGATGGTGCTTCTCGAGAGGAGAAGCTGAGTCAGGACGAGATAGTGCTGGCCACCAAGCGCG  
 TGATCCAGGGTTTAGAGACCCTGAGAGGGGAGCATCGTGCCCTGCTAGCTCCCCTAGCTTCTCATGAAGC  
 AGGCGAGGCCGAGCCGGGCTCACAGGAGCGCTGCCTCCTCTGCGCCGCTCCCTGGAGGCCATCGAGCTG  
 GGGCTTGGGGAGGCTCAGGTGATCCTGGCATTATCAAGCCATCTGGGGGCTGTGGAGTCAGAGAAGCAGA  
 AGCTGCGGGCTCAGGTGCGGCGCCTGGTACAAGAGAACCAGTGGTTGCGTGAGGAGCTGGCAGGGACACA  
 GCAGAAGCTGCAGCGCAGTGAACAGGCGGTGGCTCAGCTGGAGGAAGAGAAGCAGCACCTGCTATTCATG  
 AGTCAGATCCGAAAGCTGGATGAGGATGCTTCCCAAATGAGGAGAAGGGTGATGTCCCAAAGACTCCC  
 TGGATGACCTGTTTCCCAATGAAGATGAACAGAGCCCAGCCCCAGCCCTGGAGGAGGAGATGTAGCTGC  
 ACAGCATGGGGGCTATGAGATCCAGCAGCGCTACGGACCCTCCACAACCTGGTAATCCAGTATGCTTCA  
 CAAGGCCGCTATGAGGTGGCCGTGCCCTCTGCAAGCAGGCACTGGAAGATTTGGAGAAGACATCAGGCC  
 ATGACCACCCTGATGTGGCCACCATGCTGAACATCCTGGCACTGGTTTATCGGGACCAGAATAAGTACAA  
 GGATGCTGCTCACCTGCTCAATGATGCCCTGGCTATCCGGGAAAAGACTGGGCAAGGACCACCCAGCT  
 GTGGCTGCGACCTCAACAATCTGGCTGTTCTCTACGGCAACCGGGCAAGTACAAGAGGCTGAGCCAC  
 TGTGCAAGAGAGCACTGGAGATCCGGGAGAAGTCTGGGCAAGTTTACCCAGATGTGGCAAGCAGCT  
 CAGCAACCTGGCCTTGTGTGCCAGAACCAGGGCAAAGCTGAGGAGGTGGAATACTACTACCGGAGAGCC  
 CTGGAGATCTATGCCACACGCTTGGTCTGATGACCCCAATGTGGCGAAGACCAAGAACAACCTGGCTT  
 CTTGCTACTGAAACAGGGCAAGTACCAGGATGCAGAGACCCTGTACAAGGAGATCCTTACCCGTGCGCA  
 CGAGAAGGAGTTTGGCTCAGTCAATGGAGAGAACAAGCCCATCTGGATGCACGCAGAGGAGCGCGAGGAG  
 AGCAAGGATAAGCGCCGGACAGCGCCCTATGGGGAGTATGGCAGCTGGTACAAGCCTGTAAGTTG  
 ACAGTCCACAGTCAACACCACTCTGCGAAGCTTGGGCGCCTGTACCGCGCCAGGGCAAGCTGGAAGC  
 CGCACACACACTGGAAGACTGTGCCAGCCGAGCCGAAACAGGGCCTGGATCCTGCCAGCCAGACCAAG  
 GTGGTAGAACTGTTAAAAGATGGCAGTGGTGGACGAGGACACCGCCGTGGCAGCAGAGATGTGGTGGGC  
 CTCAATCTGAGTCGGACCTGGAGGAGTCAAGGCTGCAGCTGAGTGGAGTGGGACGGCAGCGGCTCTCT  
 GCGGCGCAGTGGCTCCTTTGGAAAGCTCCGGGATGCTCTGAGACGCAGCAGTGAAGTCTGTTGAGGAAG  
 CTGACGGGAGGGGCCCCACAGGAGCCCCCTAAGTCTAGGATGAAGAGGGCCAGCTCTTAACTTCTTA  
 ACAAGAGTGTGGAAGAGCCAGTCCAGCCTGGAGGCACGGGTCTTCTGACAGCCGCACTTTGAGCTCCAG  
 CTCATGGACCTCTCTCGAAGAAGCTCCCTGGTGGGC

**ACGCGT**ACGCGGCCGCTCGAG – GFP Tag – GTTTAA

**Protein Sequence:**

>MG209299 representing NM\_008451  
 Red=Cloning site Green=Tags(s)

MATMVLPREEKLSQDEIVLGTKAVIQGLETLRGEHRALLAPLASHEAGEAEPGSQERCLLLRRSLEAIEL  
 GLGEAQVILALSSHLGAVESEKQKLRAQVRRLLVQENQWLREELAGTQQKLQRSEQAVAQLEEEKQHLLFM  
 SQIRKLDDEASPNEEKGDVPKDSLDDLFPNEDEQSPAPSPGGDVAAQHGGYEIPARLRTLHNLVIQYAS  
 QGRYEVAVPLCKQALDLEKTSGHDPDVATMLNILALVYRDQNKYKDAHLLNDALAIREKTLGKDHPA  
 VAATLNNLAVLYGKRGKYKEAEPLCKRALEIREKVLGKFHPDVAKQLSNLALLCQNQGKAEVEVEYYRRA  
 LEIYATRLGPDDPNVAKTKNNLASCYLKQGYQDAETLYKEILTRAHEKEFGSVNGENKPIWMHAEEREE  
 SKDKRRDSAPYGEYGSWYKACKVDSPTVNTTLRSLGALYRRQGLKLEAAHTLEDCASRSRKQGLDPASQTK  
 VVELLKDGSGRGHRGSRDVAGPQSESDLEESGPAAEWSGDGSGSLRRSGSFGKLRDALRRSSEMLVRK  
 LQGGGPQEPNSRMKRASLNFLNKSVEEPPVQGGTGLSDSRTLSSSSMDLSRRSSLVG

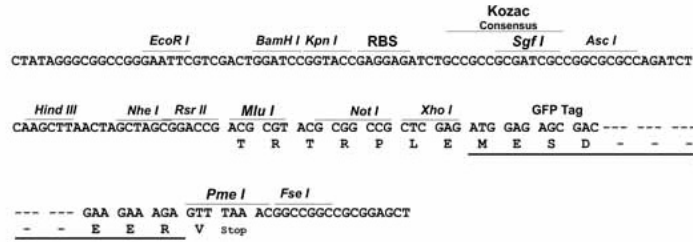
**TRTRPLE** – GFP Tag – V

**Restriction Sites:**

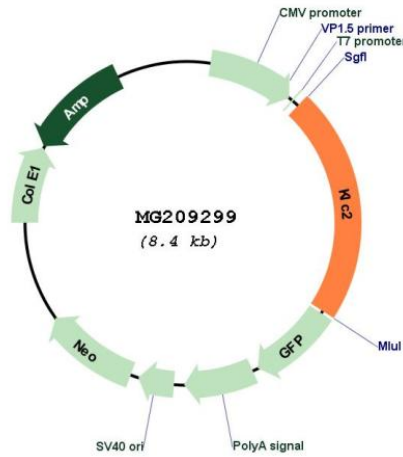
SgfI-MluI

Cloning Scheme:

Cloning sites used for ORF Shutting:



Plasmid Map:



ACCN: NM\_008451  
 ORF Size: 1857 bp

<b>OTI Disclaimer:</b>	The molecular sequence of this clone aligns with the gene accession number as a point of reference only. However, individual transcript sequences of the same gene can differ through naturally occurring variations (e.g. polymorphisms), each with its own valid existence. This clone is substantially in agreement with the reference, but a complete review of all prevailing variants is recommended prior to use. <a href="#">More info</a>
<b>OTI Annotation:</b>	This clone was engineered to express the complete ORF with an expression tag. Expression varies depending on the nature of the gene.
<b>Components:</b>	The ORF clone is ion-exchange column purified and shipped in a 2D barcoded Matrix tube containing 10ug of transfection-ready, dried plasmid DNA (reconstitute with 100 ul of water).
<b>Reconstitution Method:</b>	<ol style="list-style-type: none"><li>1. Centrifuge at 5,000xg for 5min.</li><li>2. Carefully open the tube and add 100ul of sterile water to dissolve the DNA.</li><li>3. Close the tube and incubate for 10 minutes at room temperature.</li><li>4. Briefly vortex the tube and then do a quick spin (less than 5000xg) to concentrate the liquid at the bottom.</li><li>5. Store the suspended plasmid at -20°C. The DNA is stable for at least one year from date of shipping when stored at -20°C.</li></ol>
<b>RefSeq:</b>	<a href="#">NM_008451.3</a>
<b>RefSeq Size:</b>	3032 bp
<b>RefSeq ORF:</b>	1860 bp
<b>Locus ID:</b>	16594
<b>Cytogenetics:</b>	19 4.25 cM