

Product datasheet for **MG209294**

Slc6a1 (NM_178703) Mouse Tagged ORF Clone

Product data:

Product Type:	Expression Plasmids
Product Name:	Slc6a1 (NM_178703) Mouse Tagged ORF Clone
Tag:	TurboGFP
Symbol:	Slc6a1
Synonyms:	A730043E01; GABATHG; GABATR; Gabt; Gabt1; GAT-1; Gat1; XT-1; Xtrp1
Mammalian Cell Selection:	Neomycin
Vector:	pCMV6-AC-GFP (PS100010)
E. coli Selection:	Ampicillin (100 ug/mL)



[View online »](#)

ORF Nucleotide Sequence:

>MG209294 representing NM_178703
 Red=Cloning site Blue=ORF Green=Tags(s)

TTTTGTAATACGACTCACTATAGGGCGGCCGGGAATTCGTCGACTGGATCCGGTACCGAGGAGATCTGCC
 GCC**CGGATCGCC**

ATGGCGACTGACAACAGCAAGGTGGCTGATGGGCAGATCTCTACTGAGGTGAGCGAGGCCCTGTGGCCA
 GCGACAAGCCAAAACCTGGTAGTCAAGGTGCAGAAGAAGGCCGGGACCTCCCTGACCGGACACATG
 GAAGGGACGCTTCGACTTCTCATGTCCTGCGTGGGCTATGCCATCGGCCTGGGCAATGTGTGGAGTTC
 CCTTACCTCTGTGGGAAAAACGGTGGCGGGCCTTCTAATCCCATATTTCTGACGCTCATCTTTGCGG
 GTGTTCTCTCTCTTTTGGAGTGTCCCTAGGCCAGTACACCTCCATTGGGGGCTGGGCGTATGGAA
 GCTGGCGCCCATGTTCAAGGGTGTGGCCCTCGCGGCAGCTGTGCTGTCTTCTGGCTGAACATCTACTAC
 ATCGTCATCATCTCTGGGCCATCTACTACCTGTACAACCTCTTACCACGACCCCTGCCATGGAAACAGT
 GTGACAACCCGTGGAACACTGACCGCTGCTTCTCCAACACAGCCTGGTCAATACCACCAACATGACCAG
 CGCCGTGGTGGAGTTCTGGGAGCGCAACATGCACCAGATGACAGATGGACTGGACAAGCCAGGACAGATC
 CGCTGGCCTCTGGCCATCACACTGGCCATTGCCTGGGTGCTCGTGTATTTCTGCATCTGGAAGGGTGTG
 GTTGGACTGGAAAGGTGGTCTACTTCTCAGCCACGTACCCTACATCATGCTTATCATCCTGTTCTTCCG
 TGGAGTGACGCTTCCCGGGGCAAGGAGGGGATCCTCTTCTACATCACACCCAACCTCCGAAAGTGTCT
 GATTCTGAGGTGTGGCTTACGCGGCCACCCAGATCTTCTTCTCTACGGGCTGGGCTGGGGTCCCTGA
 TTGCTCTGGGAAGCTACAACCTTTCCACAACAATGTGTACAGGGACTCCATCATCGTTTGTGCATCAA
 CTCCTGCACCAGCATGTTGCCGATTTCGTCATCTTCCATCGTGGCTTCATGGCTCATGTACCAAG
 AGGTCCATAGCTGATGTGGCAGCCTCAGGCCGGGGTGGCATTCTTGGCGTACCCTGAGGCTGTGACAC
 AGTACCCATCTCTCCCTCTGGGCTATCTCTTCTTCCATGCTGCTGATGCTGGCATTGACAGCCA
 GTTCTGTACCGTGGAGGGCTTCATCACTGCCCTGGTGGACGAGTACCCAGACTTCTCCGAATCGCCGT
 GAACTTTCATTGCTGCCGTGTGCATCGTGCCTACCTGATTGGCCTGTCTAACATCACCCAGGGTGGCA
 TTTATGTCTTCAAACCTGTTGATTACTCTGCCAGCGCATGAGCTTGTCTGTTCTGTTTCTTCTCGA
 GTGTGTCTCCATTTCTGGTTTTATGGTGTCAACCGTTCATGACAACATCCAGGAGATGGTTGGCTCC
 AGGCCCTGCATCTGGTGAAGCTGTGCTGGTCTTTTTTACACCCATCATTGTGGCGGGCGTGTCTCT
 TCAGTGTGTGCAGATGACACCACTCCATGGGAAGCTATGTTTTCCCAAGTGGGGCCAGGGCGTGGG
 CTGGCTCATGGCTCTGTCTCCATGGTGTCTATCCCTGGTACATGGCTTACATGTTCTCACCCCTGAAG
 GGCTCCCTGAAGCAGCTCTCCAGGTATGATTACGCCAGTGAAGATATTGTGCCCTGAGAATGGCC
 CTGAGCAGCCGAGGCTGGCAGCTCAGCCAGCAAGGAGGCTACATC

ACGCGTACGCGGCCGCTCGAG – GFP Tag – GTTTAA

Protein Sequence:

>MG209294 representing NM_178703
 Red=Cloning site Green=Tags(s)

MATDNSKVADGQISTEVSEAPVASDKPKTLVVKVQKKAGDLPDRDTRWKGRFDLMSVCVGYAIGLGNVWRF
 PYLCGKNGGGAFLIPYFLTLIFAGVPLFLLLECSLQYTSIGGLGVWKLAPMFKGVGLAAAVLSFWLNIIYY
 IVIISWAIYYLYNSFTTLPWKQCDNPWNDRCFSNYSLVNTTNMTSAVVEFWERNMHQMTDGLDKPGQI
 RWPLAITLAIWVLYVFCIWKGVGWTGKVVYFSATYPYIMLIILFFRGVTLPGAKEGILFYITPNFRKLS
 DSEVWLDAAATQIFFSYGLGLGSLIALGSYNSFHNNVYRDSIIVCCINSCTSMFAGFVIFSIVGFMAHVTK
 RSIADVAASGPGLAFLAYPEAVTQLPISPLWAILFFSMLMLGIDSQFCTVEGFITALVDEYPRLLRNRR
 ELFIAAVCIVSYLIGLSNITQGGIYVFKLFDYYSASGMSLLFLVFECVSI SWFYGVNRFYDNIQEMVGS
 RPCIWWKLCWSFFTPIIVAGVFLFSAVQMTPLTMGSYVFPKWQGVGWLMLSSMVLIPWYMAYMFLTLK
 GSLKQRLQVMIQPSSEDIRPENGPQAGSSASKEAYI

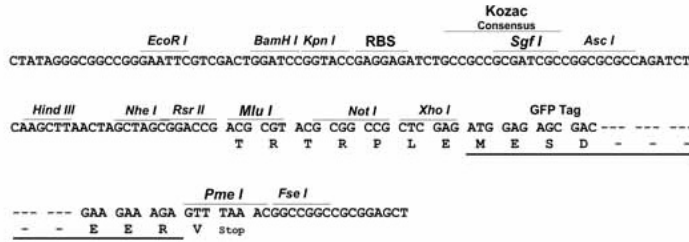
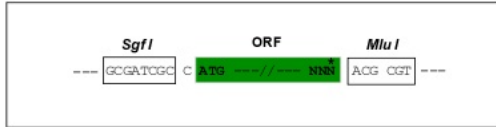
TRTRPLE – GFP Tag – V

Restriction Sites:

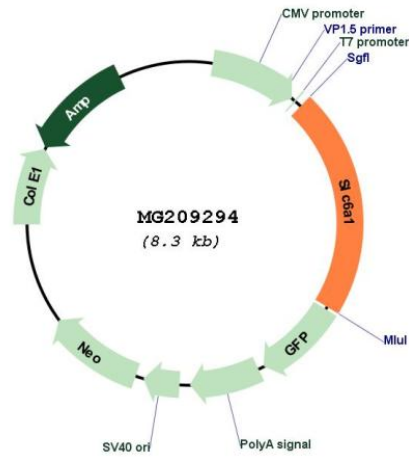
Sgfl-MluI

Cloning Scheme:

Cloning sites used for ORF Shutting:



Plasmid Map:



ACCN: NM_178703
 ORF Size: 1797 bp

OTI Disclaimer:	The molecular sequence of this clone aligns with the gene accession number as a point of reference only. However, individual transcript sequences of the same gene can differ through naturally occurring variations (e.g. polymorphisms), each with its own valid existence. This clone is substantially in agreement with the reference, but a complete review of all prevailing variants is recommended prior to use. More info
OTI Annotation:	This clone was engineered to express the complete ORF with an expression tag. Expression varies depending on the nature of the gene.
Components:	The ORF clone is ion-exchange column purified and shipped in a 2D barcoded Matrix tube containing 10ug of transfection-ready, dried plasmid DNA (reconstitute with 100 ul of water).
Reconstitution Method:	<ol style="list-style-type: none"> 1. Centrifuge at 5,000xg for 5min. 2. Carefully open the tube and add 100ul of sterile water to dissolve the DNA. 3. Close the tube and incubate for 10 minutes at room temperature. 4. Briefly vortex the tube and then do a quick spin (less than 5000xg) to concentrate the liquid at the bottom. 5. Store the suspended plasmid at -20°C. The DNA is stable for at least one year from date of shipping when stored at -20°C.
RefSeq:	NM_178703.2 , NP_848818.1
RefSeq Size:	4318 bp
RefSeq ORF:	1800 bp
Locus ID:	232333
UniProt ID:	P31648
Cytogenetics:	6 E3
Gene Summary:	Terminates the action of GABA by its high affinity sodium-dependent reuptake into presynaptic terminals.[UniProtKB/Swiss-Prot Function]