

Product datasheet for **MG209287**

Enox2 (NM_145951) Mouse Tagged ORF Clone

Product data:

Product Type:	Expression Plasmids
Product Name:	Enox2 (NM_145951) Mouse Tagged ORF Clone
Tag:	TurboGFP
Symbol:	Enox2
Synonyms:	APK1; Cova1; tNOX
Mammalian Cell Selection:	Neomycin
Vector:	pCMV6-AC-GFP (PS100010)
E. coli Selection:	Ampicillin (100 ug/mL)



[View online »](#)

ORF Nucleotide Sequence:

>MG209287 representing NM_145951
 Red=Cloning site Blue=ORF Green=Tags(s)

TTTTGTAATACGACTCACTATAGGGCGGCCGGAATTCGTCGACTGGATCCGGTACCGAGGAGATCTGCC
 GCC**CGCATCGCC**

ATGACGCTGCCTGTGTCTGATCCAGCTGCATGGGCCACAGCAATGAATAATCTTGAATGGCTCCACTGG
 GAATTGCTGGACAACCAATTTTACCTGACTTCGATCCTGCCCTTGGGATGATGACTGGAATACCACCAAT
 AACTCCCATGATGCCGGTTTGGGCATAGTCCCGCCACCGATTCTCCAGATATGCCGTAGCAAAGGAG
 ATCATACACTGCAAAAGCTGCACGCTCTTCCCTCCCAACCCAAATCTTCCACCACCTGCAACACGAGAAA
 GGCCACCAGGCTGTAAGACAGTGTGGTGGCTGCCTGAAAATGGGACAGAGCAGATCATTGTGGA
 AGTGTTTGAACAGTGTGGAGAGATTATTGCTATCCGGAAGAGCAAAAAGAACTTCTGTACATTCGCTTT
 GCTGAGGAATACATGGTGGACAAAGCCCTCTATCTGTCTGGTTACCGAATTCGTCTGGGCTAGTACTG
 ACAAGAAGGACACAGGCCGCTCCATGTTGACTTTGCCAGGCTCGGGATGACTTATATGAGTGGGAGTG
 TAAACAGCGTATGCTAGCCAGAGAGGAGCGGCACCGTAGAAGGATGGAAGAAGAAAGAATCGCTCCACCA
 TCCCCACCTCCAGTGGTCCACTATTCAGATCATGAATGCAGCATTGTTGCTGAAAAACTCAAAGATGATT
 CCAAATTCCTCGGAAGCTGTGCAGACCTTGTCACTGGATTGAGAGGGGGGAAGTGAACCGCCGAGTGC
 CAACCACTTCTACTCCATGATCCAGTCAGCCAACAGCCATGTCCGCCGCTGGTAAATGAGAAAGCTACC
 CATGAGAAAGAGATGGAAGAAGCAAAAGAGAAGTTCAAGCAGGCCCTTTCTGGAATTCCTATTCAATTTG
 AGCAGATAGTAGCTGTGTACCATTCCGCTTCCAAACAGAAGGCATGGGACCACCTTCAAAAAGCACAACG
 TAAAAACATCAGTGTGGTGCAAAACAGCTGAGGAAATTCGCAACATTCATAATGATGAATTAATGGGA
 ATCAGAAGAGAAGAAGAAATGAAATGTCTGATGATGAAATAGAAGAGACAACAGAAAACAAAAGAAACGG
 AGGAATCAGCCTTAGTGTACAGGCAGAAGCTCTGAAGGAGGAAAATGATAGCCTCCGCTGGCAGCTGGA
 CGCATACCGGAATGAGGTAGAAGCTGCTCAACAGGAACAAGGCAAGCCACAGGGAGGATGACCCAAAC
 AAGGAACAGCAGCTGAACTTCTGCAGCAAGCCCTACAAGGGATGCAACAGCATCTGCTCAAAGTCCAAG
 AGGAATACAAAAGAAAGAAAGCTGAGCTTGACCGAATCAAAGACGACAATTTACAGGTAGAACAAGTGT
 GGAAAAATTTTATGAAAAGCAGGAAAAGTGTGTTCTAGACTGTGTGCATCAAGCCAAGAAGGTGAGCAA
 CCTCTTGAGAAGACCGCAGTCAGCAATCCTGTCAAATCTGAACGTGAGGCACTGCTAGTGGGATCATCT
 CCACATTCCTTCCAGTCCACCCATTTGGAGCCAGCATTGAATACATCTGTTCTACTTGAATCGTCTCGA
 TAATAAGGCAAGTACCAAATACCCAGCAAATTAACCCTTCTCCACTTACCAGTACGACCAGTGTGAT
 GTGGAATCTCTCATGAGTAGACTCCAGCATACCTTCAGACAGGAAATGACTGGAGTTGGAGCCAGCCTGG
 AGAAGAGATGAAATTCGTGGTTTTGAGGCTTGAAGCTGACC

ACGCGTACGCGGCCGCTCGAG - GFP Tag - GTTTAA

Protein Sequence:

>MG209287 representing NM_145951
 Red=Cloning site Green=Tags(s)

MTLPVSDPAAWATAMNNLGMAPLGIAGQPILPDFDPALGMMTGIPPITPMMPGLGIVPPPIPPDMMPVAKE
 I IHCKSCTLFPPNPPLPPPATRRERPPGCKTVFVGLPENGTEQIIIVEVFEQCGEIIAIRKSKKNFCHIRF
 AEEYMVDKALYLSGYRIRLGSSTDKKDTGRLHVDFAQARDDL YEWCKQRMLAREERHRRRMEEERMRPP
 SPPPVVHYSDEHCSIVAELKDDSKFSEAVQTLT TWIERGEVNRRSANHFYSMIQSANSVRRRLVNEKAT
 HEKEMEEAKEKFKQALSGILIQFEQIVAVYHSASKQKAWDHFTKAQRKNISVWCKQAEERIRNIHNDELGM
 IRREEEMEMSDDEIEETTETKETEEESALVSQAEALKEENDSLRWQLDAYRNEVELLKQEQQKAHREDDPN
 KEQQLKLLQQALQGMQQHLLKVQEEYKKKEAELDRIKDDNLQVEQLLENFHEKQENCGRSLCASSQEGEQ
 PLEKTAVSNPVKSEREALLVGIISTFLHVHPFGASIEYICSYLNRLDNKASYQIPSKLTTSPLLPISTSD
 VESLMSRLQHTFRQEMTVGASLEKRWKFCGFEGFLKLT

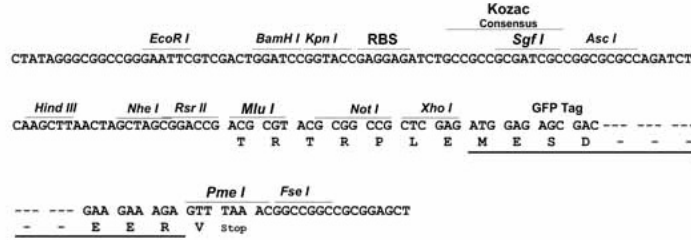
TRTRPLE - GFP Tag - V

Restriction Sites:

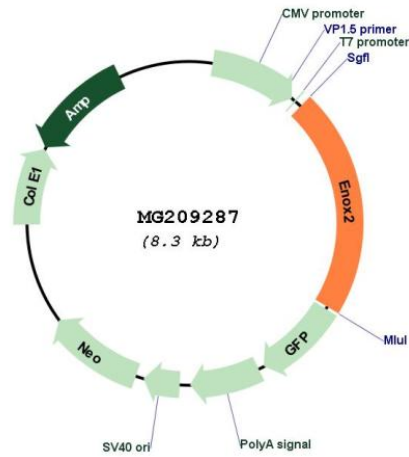
Sgfl-MluI

Cloning Scheme:

Cloning sites used for ORF Shutting:



Plasmid Map:



ACCN: NM_145951
 ORF Size: 1794 bp

OTI Disclaimer:	The molecular sequence of this clone aligns with the gene accession number as a point of reference only. However, individual transcript sequences of the same gene can differ through naturally occurring variations (e.g. polymorphisms), each with its own valid existence. This clone is substantially in agreement with the reference, but a complete review of all prevailing variants is recommended prior to use. More info
OTI Annotation:	This clone was engineered to express the complete ORF with an expression tag. Expression varies depending on the nature of the gene.
Components:	The ORF clone is ion-exchange column purified and shipped in a 2D barcoded Matrix tube containing 10ug of transfection-ready, dried plasmid DNA (reconstitute with 100 ul of water).
Reconstitution Method:	<ol style="list-style-type: none">1. Centrifuge at 5,000xg for 5min.2. Carefully open the tube and add 100ul of sterile water to dissolve the DNA.3. Close the tube and incubate for 10 minutes at room temperature.4. Briefly vortex the tube and then do a quick spin (less than 5000xg) to concentrate the liquid at the bottom.5. Store the suspended plasmid at -20°C. The DNA is stable for at least one year from date of shipping when stored at -20°C.
RefSeq:	NM_145951.5
RefSeq Size:	3107 bp
RefSeq ORF:	1797 bp
Locus ID:	209224
UniProt ID:	Q8R0Z2
Cytogenetics:	X A5
Gene Summary:	May be involved in cell growth. Probably acts as a terminal oxidase of plasma electron transport from cytosolic NAD(P)H via hydroquinones to acceptors at the cell surface. Hydroquinone oxidase activity alternates with a protein disulfide-thiol interchange/oxidoreductase activity which may control physical membrane displacements associated with vesicle budding or cell enlargement. The activities oscillate with a period length of 22 minutes and play a role in control of the ultradian cellular biological clock (By similarity).[UniProtKB/Swiss-Prot Function]