

Product datasheet for **MG209281**

Ptpn11 (NM_011202) Mouse Tagged ORF Clone

Product data:

Product Type:	Expression Plasmids
Product Name:	Ptpn11 (NM_011202) Mouse Tagged ORF Clone
Tag:	TurboGFP
Symbol:	Ptpn11
Synonyms:	2700084A17Rik; AW536184; PTP1D; PTP2C; SAP-2; SH-PTP2; SH-PTP3; SHP-2; Shp2; Syp
Mammalian Cell Selection:	Neomycin
Vector:	pCMV6-AC-GFP (PS100010)
E. coli Selection:	Ampicillin (100 ug/mL)



[View online »](#)

ORF Nucleotide Sequence:

>MG209281 representing NM_011202
 Red=Cloning site Blue=ORF Green=Tags(s)

TTTTGTAATACGACTCACTATAGGGCGGCCGGAATTCGTCGACTGGATCCGGTACCGAGGAGATCTGCC
 GCC**GCGATCGCC**

ATGACATCGCGGAGATGGTTTCACCCCAACATCACTGGTGTGGAGGCAGAGAATCTCCTGCTGACCAGAG
 GAGTCGATGGCAGTTTTTTAGCAAGGCCAGTAAGAGTAACCCTGGAGACTTCACCTCTGTCTGTTAGAAG
 AAATGGAGCTGTTACCCACATCAAGATTAGAACAAGTGGGACTACTATGACCTCTATGGTGGGAGAAG
 TTTGCCACTTTGGCTGAACTGGTTCAGTATTACATGGAACACCATGGGCAGCTGAAAAGAGAAGAATGGAG
 ATGTTATCGAGCTCAAGTACCCGCTGAACTGTGCAGACCTACCTCTGAAAGGTGGTTCCATGGTCACTT
 GTCTGGAAAAGAAGCAGAGAAGCTGCTGACGGAGAAGGGCAAGCATGGCAGCTTCTCGTTCGAGAGAGC
 CAGAGCCACCCCGGAGACTTCGTCTCTCCGTGCGCACTGGTGACGACAAAGGGGAGAGCAACGACGGCA
 AGTCCAAAGTGACCCACGTATGATCCGCTGTCAGGAGCTGAAAACGACGTTGGTGGGGGAGAGCGCTT
 TGACTCTCTGACAGACCTGGTGGAGCATTACAAGAAGAACCCATGGTGGAGACGCTGGGCACAGTCTG
 CAGCTCAAGCAGCCCTCAACACAACCTCGTATCAATGCTGCTGAAATTGAAAGCCGGTTCGAGAGTTAA
 GCAAGCTGGCTGAGACCACAGATAAAGTCAAGCAGGGCTTTTGGGAAGAGTTTGAGACGCTCCAGCAACA
 GGAATGCAAACTTCTCTATAGCCGAAAAGAAGGACAGAGACAAGAAAATAAAAACAAAAACAGATACAAA
 AACATCCTGCCCTTTGATCATACCAGGGTCTTCTGATGATGGGGATCCCAATGAGCCTGTTTCTGATT
 ACATTAATGCAACATCATATGCTGAGTTTGGACCAAGTGAACAATTCAAACCCAAAAAGAGTTA
 CATTGCCACTCAAGGCTGCCTGCAGAACACGGTGAATGACTTCTGGCGGATGGTGTCCAGGAGAAGTCT
 CGAGTCATTGTCATGACCACAAAGGAAGTGGAGAGAGGGAAGAGCAAATGTGTCAAGTACTGGCCTGATG
 AGTATGCGCTCAAAGAATACGGGGTTCATCGGTGTTAGGAACGTCAAAGAAAAGTCCCGCCCATGACTACAC
 TTTACGAGAGCTCAAACCTCTAAGGTCCGACAAGCTCTACTCCAGGGAACACAGAGAGAACCGTCTGG
 CAGTACCACTTTTCGGACCTGGCCAGACCATGGCGTGCCTAGTGACCCTGGAGGTGTGCTGGACTTCTGG
 AGGAGGTCCACCACAAGCAGGAGAGCATCGTGGATGCAGGCCCTGCTGGTTCCTGACGCGCTGGGAT
 TGGCCGGACAGGAACCTTATTGTGATTGACATCCTTATTGACATCATTGAGAGAAAGGTGGACTGT
 GACATCGAGCTTCTAAAACATTAGATGGTGCAGTCCAGAGGTCCGGGATGGTCCAGACAGAAGCAC
 AGTACCGGTTTATCTACATGGCTGTCCAGCACTACATAGAGACGCTGCAGCGCCGGATCGAGGAGGAGCA
 GAAAAGCAAAAGAAAAGGACATGAATATACCAATATTAAGTATTCCTTGGTGGACCAGACAAGTGGTGTG
 CAGAGTCCCTGCCACCCTGCACCCAACGCCACCTGTGCAGAAATGAGGGAGGACAGCGCCCGAGTCT
 ATGAGAACGTGGGCTCATGCAGCAGCAGAGGAGTTTCAGA

ACGCGTACGCGGCCGCTCGAG - GFP Tag - GTTTAA

Protein Sequence:

>MG209281 representing NM_011202
 Red=Cloning site Green=Tags(s)

MTSRRWFHPNITGVEAENLLLTRGVDGSFLARPSKSNPGDFTLSVRRNGAVTHIKIQNTGDYYDLYGGEK
 FATLAELVQYYMEHHGQLKEKNGDVIELKYPLNCADPTSERWFHGLSGKEAEKLLTEKGKHSFLVRES
 QSHPGDFVLSVRTGDDKESNDGKSKVTHVMIRCQELKYDVGGERFDSLTDLVEHYKKNPMVETLGTVL
 QLKQPLNTRINAAEIESRVRELSKLAETTDKVKQGFWEFEFETLQQECKLLYSRKEGQRQENKNKNRYK
 NILPFDHTRVVLHDGPNPVSVDYINANIIMPEFETKCNNSKPKKSYIATQGCLQNTVDFWRMVFQENS
 RVIVMTTKEVERGKSKCVKYPDEYALKEYGVMRVRNVKESAAHDYTLRELKLSKVGQALLQGNTERTVW
 QYHFRTWPDHGVPSPDGGVLDLFLVEVHHKQESIVDAGPVVHCSAGIGRTGTFIVIDILIDIIREKGVDC
 DIDVPKTIQMVRSQRSGMVQTEAQYRFIYMAVQHYIETLQRRIEEEQKSKRKGHEYTNIKYSLVQDQSGD
 QSPLPCTPTPPCAEMREDSARVYENVGLMQQQRFR

TRTRPLE - GFP Tag - V

Restriction Sites:

Sgfl-MluI

Cloning Scheme:



ACCN: NM_011202

ORF Size: 1791 bp

OTI Disclaimer: Due to the inherent nature of this plasmid, standard methods to replicate additional amounts of DNA in E. coli are highly likely to result in mutations and/or rearrangements. Therefore, OriGene does not guarantee the capability to replicate this plasmid DNA. Additional amounts of DNA can be purchased from OriGene with batch-specific, full-sequence verification at a reduced cost. Please contact our customer care team at custsupport@origene.com or by calling 301.340.3188 option 3 for pricing and delivery.

The molecular sequence of this clone aligns with the gene accession number as a point of reference only. However, individual transcript sequences of the same gene can differ through naturally occurring variations (e.g. polymorphisms), each with its own valid existence. This clone is substantially in agreement with the reference, but a complete review of all prevailing variants is recommended prior to use. [More info](#)

OTI Annotation: This clone was engineered to express the complete ORF with an expression tag. Expression varies depending on the nature of the gene.

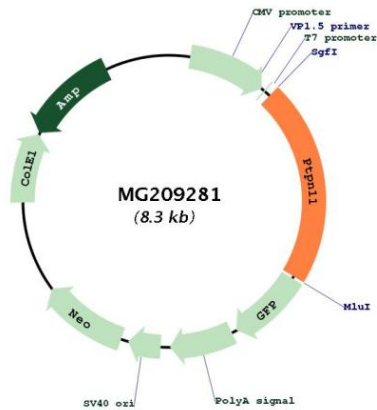
Components: The ORF clone is ion-exchange column purified and shipped in a 2D barcoded Matrix tube containing 10ug of transfection-ready, dried plasmid DNA (reconstitute with 100 ul of water).

- Reconstitution Method:
1. Centrifuge at 5,000xg for 5min.
 2. Carefully open the tube and add 100ul of sterile water to dissolve the DNA.
 3. Close the tube and incubate for 10 minutes at room temperature.
 4. Briefly vortex the tube and then do a quick spin (less than 5000xg) to concentrate the liquid at the bottom.
 5. Store the suspended plasmid at -20°C. The DNA is stable for at least one year from date of shipping when stored at -20°C.

RefSeq: [NM_011202.3, NP_035332.1](#)
 RefSeq Size: 5628 bp
 RefSeq ORF: 1794 bp
 Locus ID: 19247
 UniProt ID: [P35235](#)
 Cytogenetics: 5 F

Gene Summary: Acts downstream of various receptor and cytoplasmic protein tyrosine kinases to participate in the signal transduction from the cell surface to the nucleus. Positively regulates MAPK signal transduction pathway. Dephosphorylates GAB1, ARHGAP35 and EGFR. Dephosphorylates ROCK2 at 'Tyr-722' resulting in stimulation of its RhoA binding activity. Dephosphorylates CDC73.[UniProtKB/Swiss-Prot Function]

Product images:



Circular map for MG209281