

Product datasheet for **MG209269**

Tbkbp1 (NM_198100) Mouse Tagged ORF Clone

Product data:

Product Type:	Expression Plasmids
Product Name:	Tbkbp1 (NM_198100) Mouse Tagged ORF Clone
Tag:	TurboGFP
Symbol:	Tbkbp1
Synonyms:	3110043L15Rik; ProSAPiP2; SINTBAD
Mammalian Cell Selection:	Neomycin
Vector:	pCMV6-AC-GFP (PS100010)
E. coli Selection:	Ampicillin (100 ug/mL)



[View online »](#)

ORF Nucleotide Sequence:

>MG209269 representing NM_198100
 Red=Cloning site Blue=ORF Green=Tags(s)

TTTTGTAATACGACTCACTATAGGGCGGCCGGAATTCGTCGACTGGATCCGGTACCGAGGAGATCTGCC
 GCC**CGGATCGCC**

ATGGAGTCCATGTTTGAAGATGACATCAGCATCTGACCCAAGAGGCCTTGGGGCCAGTGAGGTGTGGC
 TGGATGGTCTGGAGACCGTCCCTGGGAGGGGACATGTGTTCTGCCTCCCACTTTGCCCTCATCACAGC
 CTACGGAGACATCAAGGAAAGGCTAGGAGGCCTGGAGAGGGAGAATGCCACCCTCCGCCGTCGCCTCAAA
 GTCTATGAGATCAAGTATCCGCTGATCACTGATTTTGGAGAGGAGCATGGCTTCCCTCTGTATGAACTCA
 AGGATGGTCCCTGCTGGAGGTGGAGAAGGTCACTGTCAGCAACGACTCAACCAATTCACACAGGTT
 GCAGAAGAGTAAGGAGCAGGAGGAGCAGCTCGGGGAGATGATCCAGGCTTACGAGAACTGTGCGTGGAG
 AAAAGCGACTTGGAGACAGAGCTGGGGGAGATGCGGGCCCTGGTAGAGACTCATCTACGGCAGATCTGTG
 GTCTGGAGAAACAGCTGCAGCAACAGCAGGGCCCTCGGGACGCAGCTTTCTCCAGCTGAGCCCCCAGC
 TGTCCCCGCCTCAGCCTGCTGACTTGGACCTGCACTATCTGGCTCTGAGAGGGGGACCTGCCTTGGGT
 CATGGTTGGCCTGGCCCTACGAGTGAAGTGTGAGCGAGCTGGAGAGGAGCGCCTGGAAGAGGCCCTGG
 AGGCTGCGCAGGGGGAGGCTCGGGGGGCTCAGCTCCGGGAGGAGCAACTCCAGGCGGAATGCGAGAGACT
 TCAGGGAGAGCTGAAGCAACTGCAGGAGACCCGGGCCAGGATCTGGCCTCCAACCAAGTCGGAATGTGAC
 ATGGCTTGGGTCAAGAGAGTTGGGGATGATCAGGTGAACCTGGCCTGGCCTACACAGAAGTACAGAGG
 AGCTGGTTCGGCTTCGGGAGCTGAGTCCCTGCAGGGGAGGATCTTGAGGACTTTGCTGCAGGAACAGGC
 CCGCAACGCAGGCCAAAGGCACTCACCGCTGTCGCAACGCTCACTCCCGGCCCTGCGTGCCCTCACCC
 TCCCCGCCTGCCGACCGCCGCTGTGCCCGTGCAGTCCCCGCTGCACAGCGCCGTTGCCCGTGC
 CCCCCTGCCCTTCGCCCCAGCAGCGCCGCTCGCCGCTCGCCGCTCGCCGCTCGCCGCTCGCCGCTCGCCG
 CGCTCGCCCGTGCCGCGTCTGCCAGTCGCCAGTCCCTCAGCGCCGCTCGCCTGTGCCACCCAGCTGC
 CCGCCCCGACGCCCGCCGCCACCACCGGGGAGAGGACGCTGGCCGAGCGTGTCTACGCCAAGC
 CGCCAGCACACGCCAAGGCCGGCTTCCAGGGCCGCCGAGCTACTCGGAGCTGGCGAGGGGGCGGC
 CTACGCTGGTGCCTCCCCGCTGGCTACAGGCCGAGGCTGCCACACTTCCCAAGCCCCGCGCTATGGC
 GGGAGCTCTACGGCAGGCCGCTCAGCCCGCGCCGAGCCTTTGAGGGCATCCGCTGCGCTTTGAGAAGC
 AGCCATCTGAAGAAGAGGAGTGGCTATGCCGGCCAGCCGCCAGTCCCAGGCGGGCACCATCCGCTG
 CGCTTCTGTGCGGGCTTCCCATCCAGAGTGCCTGCGGCCACCGCTATGCCACGCTGAGCAC
 GCACAGTCTGGCCATCCATCAACCTACTGATGGAGACGGTGGGCTCTGATATCCGAGCTGCCCTCT
 GCCAGCTGGGTTCCCTGTTGGGTACCCAGATGATGCTCTCATCAACACATAGACTCCCACCTTGAGAA
 CAGCAAGATC

ACGCGTACGCGGCCGCTCGAG - GFP Tag - GTTTAA

Protein Sequence:

>MG209269 representing NM_198100
 Red=Cloning site Green=Tags(s)

MESMFEDDISILTQEALGPSEVWLDGPGDPSLGGDMCSASHFALITAYGDIKERLGGLERENATLRRRLK
 VYEIKYPLITDFGEEHGFPLYELKDGSLLEVEKVSLLQQLRDAAFSSLSPPAVPASACPDLDLHYLALRGGPALG
 KSDLETELGEMRALVETHLRQICGLEKQLQQQGLRDAAFSSLSPPAVPASACPDLDLHYLALRGGPALG
 HGWPGPTSVSVSELEERRLEEALEAAQGEARGAQLREEQLQAECERLQGELKQLQETRAQDLASNQSECD
 MAWVKRVGDDQVNLALAYTELTEELGRLRELSLQGRILRLLQEARNAGQRHSPLSRHSPAPACPS
 SPPARPPPCAPCQSPAAQRRSPVPPCSPQRRSPASPCSPVPPQRRSPVPPSCQSPQRRSPVPPSC
 PAPQPRPPPPGERTLAERVYAKPPSHHAKAGFQGRRSYSELAEGAAYAGASPAWLQAEAAATLKP
 PRAYG
 GELYGRPLSPRRAFEGIRLRFKQPSEEEEWAMPASPPSPEAGTIRCASFCAGFPIPESPAATAYAHAEH
 AQSWPSINLLMETVGSDIRSCPLCQLGFPVGYPPDALIKHIDSHLENSKI

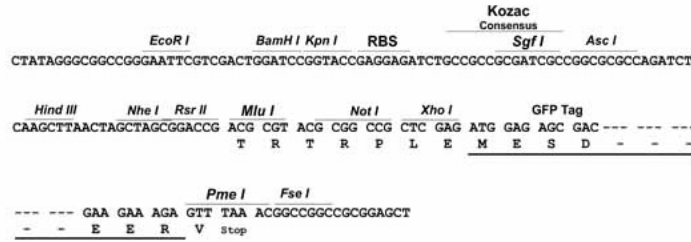
TRTRPLE - GFP Tag - V

Restriction Sites:

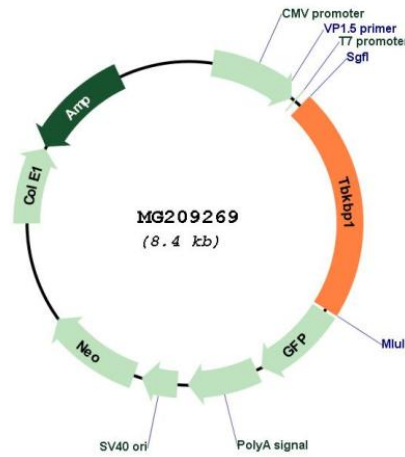
Sgfl-MluI

Cloning Scheme:

Cloning sites used for ORF Shutting:



Plasmid Map:



ACCN: NM_198100
 ORF Size: 1830 bp

OTI Disclaimer:	The molecular sequence of this clone aligns with the gene accession number as a point of reference only. However, individual transcript sequences of the same gene can differ through naturally occurring variations (e.g. polymorphisms), each with its own valid existence. This clone is substantially in agreement with the reference, but a complete review of all prevailing variants is recommended prior to use. More info
OTI Annotation:	This clone was engineered to express the complete ORF with an expression tag. Expression varies depending on the nature of the gene.
Components:	The ORF clone is ion-exchange column purified and shipped in a 2D barcoded Matrix tube containing 10ug of transfection-ready, dried plasmid DNA (reconstitute with 100 ul of water).
Reconstitution Method:	<ol style="list-style-type: none">1. Centrifuge at 5,000xg for 5min.2. Carefully open the tube and add 100ul of sterile water to dissolve the DNA.3. Close the tube and incubate for 10 minutes at room temperature.4. Briefly vortex the tube and then do a quick spin (less than 5000xg) to concentrate the liquid at the bottom.5. Store the suspended plasmid at -20°C. The DNA is stable for at least one year from date of shipping when stored at -20°C.
RefSeq:	NM_198100.3
RefSeq Size:	3358 bp
RefSeq ORF:	1833 bp
Locus ID:	73174
UniProt ID:	A2A9T0
Cytogenetics:	11 D
Gene Summary:	Adapter protein which constitutively binds TBK1 and IKKε playing a role in antiviral innate immunity. Essential for the efficient induction of IRF-dependent transcription following infection with Sendai virus.[UniProtKB/Swiss-Prot Function]