

## Product datasheet for **MG209259**

### Sox13 (BC007130) Mouse Tagged ORF Clone

#### Product data:

Product Type:	Expression Plasmids
Product Name:	Sox13 (BC007130) Mouse Tagged ORF Clone
Tag:	TurboGFP
Symbol:	Sox13
Synonyms:	AA407916; AW259412; AW540933; Sox-13
Mammalian Cell Selection:	Neomycin
Vector:	pCMV6-AC-GFP (PS100010)
E. coli Selection:	Ampicillin (100 ug/mL)



[View online »](#)

**ORF Nucleotide Sequence:**

>MG209259 representing BC007130  
 Red=Cloning site Blue=ORF Green=Tags(s)

TTTTGTAATACGACTCACTATAGGGCGGCCGGGAATTCGTCGACTGGATCCGGTACCGAGGAGATCTGCC  
 GCC**CGGATCGCC**

ATGGTGAAGTGCACCATCAAGTCTGAGGAGAAGAAGGAGCCTTGCCACGAGGCTCCCAAGTGCAGCCC  
 CTGCAGTGGAGACCCAGCCTGGAGACCCGGCCCGGCCTCTCAGGATGCTGCCACCGCTAAAGCTCCTCC  
 TCAGGACTGTGCCTCACCAGAGAGCAGTGGTCCCCAGAACCAGAGACCAGCAGCTTCAGAGGCTGCT  
 TCGGGAAGCCAGGAGCGCCTGGACTTCAACCGCAACTACAGGAAGTTGTGCCAGCCATCGAGAAGTGC  
 TGTCCAGTACTGGAAGGAGAGGTTTCTGGGAAGAAGCAATGTGGAAGCTAAGGATGTCAAAGGGACCCA  
 AGAGAGCCTGGCTGAGAAGGAATCCAGCTTTTGGTCATGATCCATCAGCTCTCTGCCCTTCGGGACCCAG  
 CTCCTTACGGCCACTCTGAGCAGAAGAATGGCCGCCATGCTGTTTGAAGCAGCAGCAACAGATGG  
 AACTGGCCAGGCAGCAGCAGGAGCAGATCGCCAAGCAGCAGCAGCAGCTGATTCAACAGCAGCACAAGAT  
 CAACCTCTGCAGCAGCAGATCCAGCAGTTAACATGCCTTACGTCATGATCCAGCCTTCCCCCAAGC  
 CACCAGCCTTTGCTGTCACTCCTGACTCCAGCTGGCTTACCTATTACGCCATTCCCTGTAAGCCAG  
 TGGAAATCCCACTGCAGCTGCTGCACAGCCCGCCTGCCCTGTGGTGAAGAGGTCGGGGGTGGCCGCCCA  
 CCACCCCTGCAGGAGCCCCACAACCACTGAACCTCACAGCCAAGCCAAAGGTACCCGAGCTGCCAAC  
 ACCTCCAGCTCTCCAGCCTGAAGATGAACAGTTGTGGGCTCGCCCCGCGCCAGCCATGGGGCTCCCAAA  
 GGGACCTGCAATCCAGCCCCCAGCCTGCCTCTGGGCTTCTTGGTGAAGGGGACGCCGTAACCAAAGC  
 CATCCAGGATGCCCGCAGCTGCTGCACAGCCACAGTGGGGCTTGGAAAATCCCCAATACCCATTCC  
 CGGAAGGACCTCATCAGCCTGGACTCCTCCCGCCAAGGAGCGGCTGGAGGAGAGCTGTGTGCATCCCC  
 TGGAGGAAGCCATGCTGAGCTGTGACATGGATGGCTCCCGCATTTTTCCGAGTCTCGGAACAGCAGCCA  
 CATCAAGAGACCCATGAATGCCTTCATGGTGTGGGCAAGGATGAACGGAGGAAAATTCAGGCCTTC  
 CCAGACATGCATAACTCCAGCATCAGCAAGATCCTTGGTTCTCGTGGAAAGTCCATGACCAACCAGGAGA  
 AACAGCCGTACTACGAGGAGCAGGCCCGTCTGAGCCGGCAGCACCTGGAGAAATACCCTGACTATAAGTA  
 CAAGCCAAGGCCTAAGCGTACCTGTGTCGTGGAGGGCCGGCGGCTGCGCGTGGGCGAGTACAAGGCCTTG  
 ATGAGGACACGGCGCCAGGGTCTCGCCAAAGCTACACCATCCCCCGCAGGCTGGCCAGGCACAGGTGA  
 GCTCAGATATCCTGTTCCCTCGGCAGCGGGCTTCCCCCTGGCACGTCCACTGGTGGAGCACTATGACCC  
 CCAGGGCCTGGACCCCAACATGCCTGTCATCATCAATACCTGCAGTCTCCGGGAGGAAGGGGAGGGCACA  
 GATGACAGGCACTCGGTGGCCGATGGAGAGATGTACCGGTACAGCGAGGACGAGGACTCAGAGGGTGACG  
 AGAAGAGTGATGAGGAGCTGGTGGTACTCACAGAC

**ACGCGTACGCGGCCGCTCGAG** – GFP Tag – GTTTAA

**Protein Sequence:**

>MG209259 representing BC007130  
 Red=Cloning site Green=Tags(s)

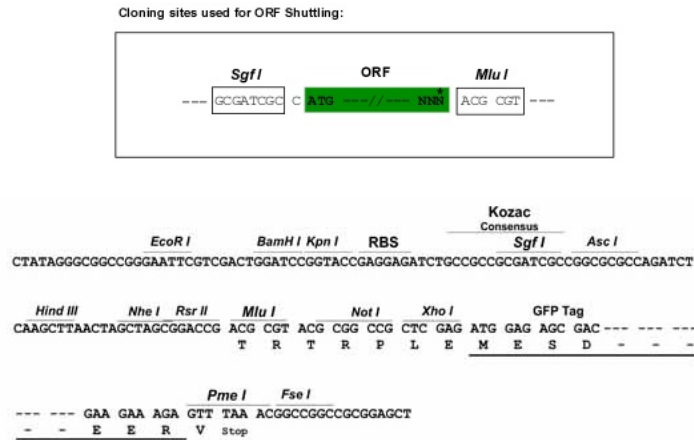
MVNCTIKSEEKKEPCHEAPQGAAPAVETQPGDPAPASQDAATAKAPPQDCASPESSGSPEPKRPAASEAA  
 SGSQERLDFNRNLQEVVPAIEKLLSSDWKERFLGRSNVEAKDVKGTQESLAEKELQLLVMIHQLSALRDQ  
 LLTAHSEQKNMAAMLFEKQQQMELARQQEQIAKQQQLIQQHKINLLQQQIQVNMPPYVMPAFPPS  
 HQPLPVTPDSQLALPIQIPCKPVEYPLQLLHSPAPVVKRSGVAHHPLQEPQPLNLTAKPKVPELPN  
 TSSPSLKMNSCGPRPASHGAPTRDLQSSPPLPLGFLGEGDAVTKAIQDARQLLHSHSGALENSPNTPF  
 RKDLISLDSSPAKERLEESCVHPLEEAMLSCDMDGSRHFSESRNSSHIKRPMNAMVWAKDERRKILQAF  
 PDMHNSSIISKILGSRWKSMTNQEKPYYEEQARLSRQHLEKYPDYKYKPRPKRTCVVEGRRLRVGEYKAL  
 MRTRRQGARQSYTIPPQAGQAQVSSDILFPRAAGLPLARPLVEHYDPQGLDPNMPVIINTCSLREEGEGT  
 DDRHSVADGEMYRYSEDEDESEGDEKSDEELVVLTD

**TRTRPLE** – GFP Tag – V

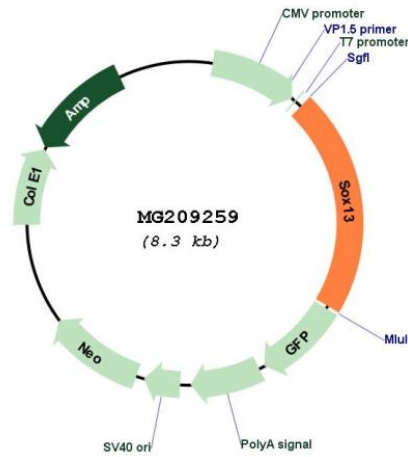
**Restriction Sites:**

Sgfl-MluI

Cloning Scheme:



Plasmid Map:



ACCN: BC007130

ORF Size: 1787 bp

<b>OTI Disclaimer:</b>	The molecular sequence of this clone aligns with the gene accession number as a point of reference only. However, individual transcript sequences of the same gene can differ through naturally occurring variations (e.g. polymorphisms), each with its own valid existence. This clone is substantially in agreement with the reference, but a complete review of all prevailing variants is recommended prior to use. <a href="#">More info</a>
<b>OTI Annotation:</b>	This clone was engineered to express the complete ORF with an expression tag. Expression varies depending on the nature of the gene.
<b>Components:</b>	The ORF clone is ion-exchange column purified and shipped in a 2D barcoded Matrix tube containing 10ug of transfection-ready, dried plasmid DNA (reconstitute with 100 ul of water).
<b>Reconstitution Method:</b>	<ol style="list-style-type: none"><li>1. Centrifuge at 5,000xg for 5min.</li><li>2. Carefully open the tube and add 100ul of sterile water to dissolve the DNA.</li><li>3. Close the tube and incubate for 10 minutes at room temperature.</li><li>4. Briefly vortex the tube and then do a quick spin (less than 5000xg) to concentrate the liquid at the bottom.</li><li>5. Store the suspended plasmid at -20°C. The DNA is stable for at least one year from date of shipping when stored at -20°C.</li></ol>
<b>RefSeq:</b>	<a href="#">BC007130</a> , <a href="#">AAH07130</a>
<b>RefSeq Size:</b>	3364 bp
<b>RefSeq ORF:</b>	1787 bp
<b>Locus ID:</b>	20668
<b>Cytogenetics:</b>	1 E4
<b>Gene Summary:</b>	Binds to the sequence 5'-ACAAT-3'. [UniProtKB/Swiss-Prot Function]