

Product datasheet for **MG209257**

PPP2R5D (NM_009358) Mouse Tagged ORF Clone

Product data:

Product Type:	Expression Plasmids
Product Name:	PPP2R5D (NM_009358) Mouse Tagged ORF Clone
Tag:	TurboGFP
Symbol:	PPP2R5D
Synonyms:	B'delta; TEG-271; Tex271
Mammalian Cell Selection:	Neomycin
Vector:	pCMV6-AC-GFP (PS100010)
E. coli Selection:	Ampicillin (100 ug/mL)



[View online »](#)

ORF Nucleotide Sequence:

>MG209257 representing NM_009358
 Red=Cloning site Blue=ORF Green=Tags(s)

TTTTGTAATACGACTCACTATAGGGCGGCCGGGAATTCGTCGACTGGATCCGGTACCGAGGAGATCTGCCGCCGCGATCGCC

ATGTCCTATAAACTGAAGAAGGATAAGGAACCCTCCAAGCTTGCCAAAGGCACAGCCAAGCCAGCAGCTCAAGCAAGGATGGTGGAGGGGAGAACACCGATGAGGCCAGCCAGCCAGTCTCAGTACCATCATCAACAAGCGACCCAGCAACAGTACACCACCCCAACAACAAGTCAAGTACTCAGGGGACCCAGATTGTCAAGAAAGAACGACGCCAAAGCTCCTTCCCCTTCAACCTCAACAAGAACCGGGAGCTACAAA AACTTCTGCCTTGAAGACTCACCAACCCAGGAACGTGAGGAGCTGTTTATCCAGAAGCTACGCCAGTCTGTGTCTCTTTGACTTCGTGTGACGCCACTCAGTACCTCAAATGCAAAGAGGTGAAGCGGGCAGGACTCAATGAGATGGTGGAGTATATCACCCACAGCCGTGATGTTGTCAGTGGCCATCTACCTGAGGCTGTCACCATGTTTTTCAGTGAATCTTCCGGACGCTGCCTCCTTCATCGAATCCACAGGAGCAGAGTTTGA CCCTGAGGAAGATGAGCCAACCTTGAAGCTGCCTGGCCGCATCTCCAGCTCGTGTACGAGTTTTTCTTACGTTTTCTGGAGTCTCCAGATTTCCAGCCAAATATAGCCAAGAAGTACATTGACCAGAAGTTTGTACTTGCTCTCCTGGACCTATTCGATAGTGAAGACCTAGAGAGCGGGATTTTCTCAAGACCATTTTGCATCGCATCTATGGCAAGTTTTTGGGGCTCCGGCTTATATTCGTAGGCAGATCAACCACATCTTCTACAGGTTTATCTATGAGACTGAGCATCACAATGGGATTGCGGAGCTGCTGGAGATCCTGGGCAGCATCATCAATGGCTTGCCTTGGCCCTTAAGGAAGAACAAGGTGTTTCTCGTCCGTGCTCCTGCTTCCACTCACAAAAGTCAAGTCTCTGAGTGTATACCACCTCAGTTGGCGTACTGTGTGGTGCAGTTCCTGGAGAAGGAGAGCAGTCTCACTGAGCCGGTGAATTTGGGACTTCTCAAGTTTTGGCCTAAGACCCACAGCCCAAGGAGGTGATGTTTCTGACGACTGGAGGAGATTCTAGATGTCAATTGAACCTCGGAGTTCAGTAAAGTCATGGAGCCGCTTCCGCCAGCTTGCCAAATGTGTTTCCAGCCCAATTTCCAGGTGGCGGAGCGCCCTCTACTACTGGAACAATGAGTACATCATGAGCCTCATCAGCGACAATGCTGCCCGCATCCTCCCATCATGTTTCTGCACTCTATAGAACTCCAAAAGCCACTGGAACAAGACAATCCATGGACTCATCTACAATGCCCTGAAGCTTTCATGGA GATGAACCAGAAGCTGTTTGACGACTGCACACAGCAGTACAAGGCGGAGAAGCAGAAGGGCAGGTTCCGAATGAAGGAGAGAGAGGAGATGTGGCAGAAGATCGAGGAGCTGGCCCGCTCAATCCCGAGTACCCTATGT TCGGGCTCCTCCGCACTGCCCTGTGTACTCCATGGAGACAGAGACGCCACAGCAGAGGACATTCA GCTCCTGAAGAGGACGGTGGAGACAGAGCCGTGCAGATGCTGAAGGACATCAAGAAGGACAAAAGTGTCTCCGGAGGAAGTCAGAGCTGCCACAGGACGTGTACACCATCAAGGCACTAGAGGCGCACAGCGGGCAG AAGAGTTCCTGACTGCCAGCCAGGAGGCCCT

ACGCGTACGCGGCCGCTCGAG - GFP Tag - GTTTAA

Protein Sequence:

>MG209257 representing NM_009358
 Red=Cloning site Green=Tags(s)

MSYKLLKDKPEPSKLAKGTAKPSSSSKGGGENTDEAQPQPQSQSPSSNKRPSNSTPPPTQLSKIKYSGGPQIVKKERRQSSFPFNLNKNRELQKLPALKDSPTQEREELFIQKLRQCCVLFDFVSDPLSDLKCKEVKRALNEMVEYIITHSRDVVTEAIYPEAVTMFSVNLFRLLPPSSNPTGAEFDPDEDEPTLEAAWPHLQLVVEFFLRFLESPDFQPNIAKKYIDQKFLVALLDLFSEDPREDFLKTILHRIYKFLGLRAYIRRQINHFYRFIYETEHNHIAELLEILGSIINGFALPLKEEHKVFVVRVLLPLHKVKSLSVYHPQLAYCVVQFLEKESLTPVIVGLLKFWPKTHSPKVMFLNELEEILDVIEPSEFSKVMPLFRQLAKCVSSPHFQVAERALYYWNN EYIMSLISDNAARILPIMPALYRNSKSHWNTIHGLIYNALKLFMEMNQKLFDDCTQQYKAEKQGRFRMKEREEMWQKIEELARLNPQYPMFRAPPPLPPVYSMETETPTAEDIQLLKRTVETEAVQMLKDIKKDKVLLRRKSELQPDVYTIKALEAHKRAEEFLTASQEAL

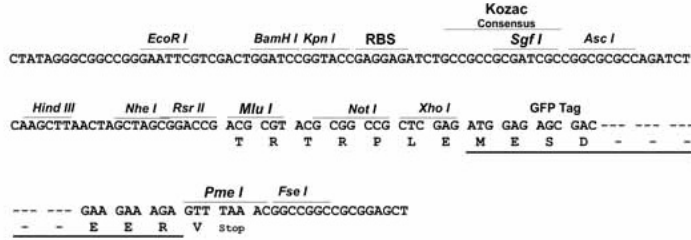
TRTRPLE - GFP Tag - V

Restriction Sites:

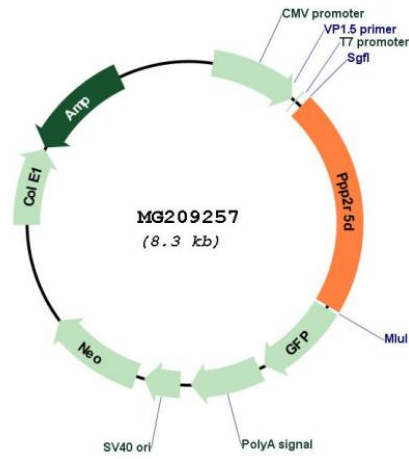
Sgfl-MluI

Cloning Scheme:

Cloning sites used for ORF Shuttling:



Plasmid Map:



ACCN: NM_009358

ORF Size: 1782 bp

OTI Disclaimer:	The molecular sequence of this clone aligns with the gene accession number as a point of reference only. However, individual transcript sequences of the same gene can differ through naturally occurring variations (e.g. polymorphisms), each with its own valid existence. This clone is substantially in agreement with the reference, but a complete review of all prevailing variants is recommended prior to use. More info
OTI Annotation:	This clone was engineered to express the complete ORF with an expression tag. Expression varies depending on the nature of the gene.
Components:	The ORF clone is ion-exchange column purified and shipped in a 2D barcoded Matrix tube containing 10ug of transfection-ready, dried plasmid DNA (reconstitute with 100 ul of water).
Reconstitution Method:	<ol style="list-style-type: none"> 1. Centrifuge at 5,000xg for 5min. 2. Carefully open the tube and add 100ul of sterile water to dissolve the DNA. 3. Close the tube and incubate for 10 minutes at room temperature. 4. Briefly vortex the tube and then do a quick spin (less than 5000xg) to concentrate the liquid at the bottom. 5. Store the suspended plasmid at -20°C. The DNA is stable for at least one year from date of shipping when stored at -20°C.
RefSeq:	NM_009358.3 , NP_033384.2
RefSeq Size:	2926 bp
RefSeq ORF:	1785 bp
Locus ID:	21770
Cytogenetics:	17 C