

Product datasheet for **MG209253**

Lsr (NM_017405) Mouse Tagged ORF Clone

Product data:

Product Type:	Expression Plasmids
Product Name:	Lsr (NM_017405) Mouse Tagged ORF Clone
Tag:	TurboGFP
Symbol:	Lsr
Synonyms:	ILDR3; Lisch7
Mammalian Cell Selection:	Neomycin
Vector:	pCMV6-AC-GFP (PS100010)
E. coli Selection:	Ampicillin (100 ug/mL)



[View online »](#)

ORF Nucleotide Sequence:

>MG209253 representing NM_017405
 Red=Cloning site Blue=ORF Green=Tags(s)

TTTTGTAATACGACTCACTATAGGGCGGCCGGGAATTCGTCGACTGGATCCGGTACCGAGGAGATCTGCC
 GCC**CGGATCGCC**

ATGGCGCCGGCGCCAGCGCGTGTGCTGGGGCGCCTGGCTCCACCCGGCCACCAGATCTTCGTGTGTC
 TTTTCTCATCTTTACTGCCAGACCGTGCCAGTGCCATCCAGGTGACCGTGCCCTGACCCCTACCACGT
 AGTGATCTGTTCCAGCCAGTGACACTACACTGCACCTACCAGATGAGCAATACCCTCACAGCCCCTATC
 GTGATCTGGAAGTATAAGTCGTTCTGTGCGGACCGTGTGCCGACGCCTTCTCCCCTGCCAGCGTGGACA
 ACCAGCTCAACGCCAGCTGGCGCTGGCAACCCCGGCTACAACCCCTATGTGGAGTGCCAGGACAGCGT
 ACGCACTGTCAAGGTGGTGGCCACCAACAGGGCAATGCTGTGACCTGGGAGACTACTACCAGGGCAGG
 AGAATCACCATCACAGGAAATGCTGACCTGACCTTCGAGCAGACGGCCTGGGAGACAGTGGAGTGTATT
 ACTGCTCCGTGGTCTCAGCCAAGATCTGGATGGGAACAACGAGGCGTACGCAGAGCTCATTGTCCTTGG
 CAGGACCTCAGAAGCCCCTGAGCTCCTACCTGGTTTTTCGGGCGGGGCCCTTGAAGATTGGCTCTTTGTG
 GTCGTGGTCTGCCTGGCAAGCCTCCTCTTCTCCTCCTCGGCATCTGCTGGTCCAGTGTGTCCCC
 ACACCTGCTGCTGCTATGTCAGATGTCCCTGCTGCCAGACAAGTGTGTGCCCTGAGGCCCTTATGC
 TGCTGGCAAAGCAGCCACCTCAGGTGTGCCAAGCATCTATGCCCCAGCATCTATACCCACCTCTCTCT
 GCCAAGACTCCGCCACCTCCGCCTGCCATGATTCCTATGCGTCTCCTATGGGTACCCTGGAGACTTTG
 ACAGGACCAGCTCAGTTGGTGGCCACAGCTCCAGGTGCCCTGCTGCGTGAAGTGGATGGGAGCGTATC
 TTCAGAAGTACGAAGTGGCTACAGGATCCAGGCTAACAGCAAGATGACTCCATGAGGGTCTATACTAT
 ATGGAGAAGGAGCTAGCCAACCTCGATCCTTCCCGGCTGGCCCTCCCAATGGCCGAGTGGAAACGGCCA
 TGAGTGAAGTAACCTCCCTCCATGAAGATGACTGGCGATCTCGGCCTCCAGGGCTCTGCCCTCACACC
 CATCAGGGATGAGGAGTGAATCGCCACTCCCCTCGGAGTCCCAGAACATGGGAGCAGGAACCCCTTCAA
 GAACAGCCAAGGGTGGTTGGGGTCTGGGCGGCCCTCGGGCCGCTCTGTGGATGCTCTAGATGACATCA
 ACCGGCCTGGCTCCACTGAATCAGGAAGTCTTCTCCCCAAGTGTGGACGGAGAGGGCGGGCCTATGC
 ACCTCCGAGAAGTCGAGCCGGGATGACCTCTATGACCCGACGATCCTAGAGACTTGCCACATTCCCGA
 GATCCCCACTATTATGATGATTTGAGGTCTAGGGATCCACGTGCTGACCCAGATCCCGTACGGATCCC
 ACGATCCTCGGGATGCTGGCTTCAAGTACGGGACCCCTCAGTATGATGGGCGACTTTAGAAGAGGCTTT
 AAAGAAAAAGGGGCTGGGAGAGAAGACGCGTTTACAGGGAGGAAGAAGAAGAAGAGAGGGGCCAC
 TATCCCCAGCACCTCCGCCTTACTCTGAGACTGACTCGCAGGCCCTCGAGGGAGCGGAGGATGAAAAAGA
 ATTTGGCCCTGAGTCGGGAAAGTTAGTCGTC

AG**CGGACCG**ACGCGTACGCGGCCGCTCGAG - GFP Tag - GTTTAA

Protein Sequence:

>MG209253 representing NM_017405
 Red=Cloning site Green=Tags(s)

MAPAASACAGAPGSHPATTFIVCLFLIIYCPDRASAIQVTVDPYHVILFQPVTLHCTYQMSNTLTAPI
 VIWKYKSFCDRVADAFSPASVDNQLNAQLAAGNPGYNPYVEQCDSVRTVVRVATKQGNVTLGDYYQGR
 RITITGNADLTFEQTAWGDSGVYYSVSAQDLNNEAYAEILVLRGRTSEAPPELLPGFRAGPLEDWLFV
 VVVCLASLLFFLLLGICWCQCCPHTCCCYVRCPCPDKCCPEALYAAGKAATSGVPSIYAPSIYTHLSP
 AKTPPPPPAMIPMRPPYGYPGDFDRTSSVGGHSSQVPLLRVDDGVSSEVRSGYRIQANQQDDSMRVLYY
 MEKELANFDPSRPGPPNGRVERAMSEVTSLHEDDWRSRPSRAPALTPIRDEEWNRHSPRSPRTWEQELQ
 EQPRGGWGSGRPRARSVDALDDINRPGSTESGRSSPPSSGRRGRAYAPPRSRRDDLYDPDDPRDLPHSR
 DPHYYDDLRSRDRADPRSRQRSHDPRDAGFRSRDPQYDGRLLLEEALKKKGAGERRRVYREEEEEEEGH
 YPPAPPYSETDSQASRERRMKNLALSRESLVY

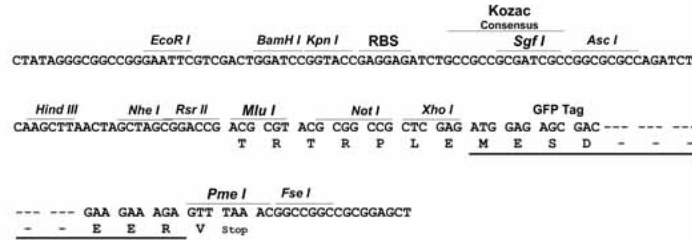
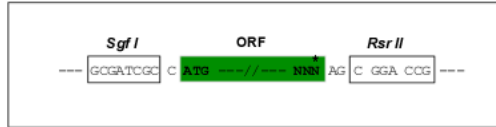
SGP**TRRRLE** - GFP Tag - V

Restriction Sites:

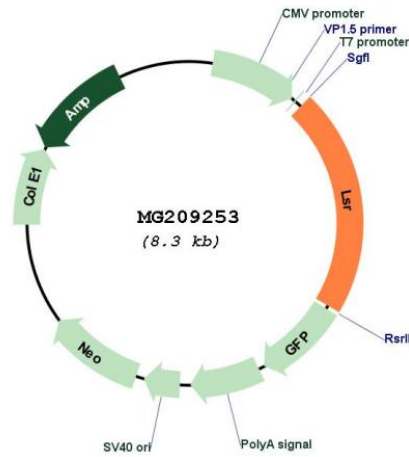
Sgfl-RsrII

Cloning Scheme:

Cloning sites used for ORF Shuttling:



Plasmid Map:



ACCN: NM_017405

ORF Size: 1782 bp

OTI Disclaimer:	The molecular sequence of this clone aligns with the gene accession number as a point of reference only. However, individual transcript sequences of the same gene can differ through naturally occurring variations (e.g. polymorphisms), each with its own valid existence. This clone is substantially in agreement with the reference, but a complete review of all prevailing variants is recommended prior to use. More info
OTI Annotation:	This clone was engineered to express the complete ORF with an expression tag. Expression varies depending on the nature of the gene.
Components:	The ORF clone is ion-exchange column purified and shipped in a 2D barcoded Matrix tube containing 10ug of transfection-ready, dried plasmid DNA (reconstitute with 100 ul of water).
Reconstitution Method:	<ol style="list-style-type: none">1. Centrifuge at 5,000xg for 5min.2. Carefully open the tube and add 100ul of sterile water to dissolve the DNA.3. Close the tube and incubate for 10 minutes at room temperature.4. Briefly vortex the tube and then do a quick spin (less than 5000xg) to concentrate the liquid at the bottom.5. Store the suspended plasmid at -20°C. The DNA is stable for at least one year from date of shipping when stored at -20°C.
RefSeq:	NM_017405.2
RefSeq Size:	1982 bp
RefSeq ORF:	1785 bp
Locus ID:	54135
UniProt ID:	Q99KG5
Cytogenetics:	7 B1
Gene Summary:	Probable role in the clearance of triglyceride-rich lipoprotein from blood. Binds chylomicrons, LDL and VLDL in presence of free fatty acids and allows their subsequent uptake in the cells (By similarity).[UniProtKB/Swiss-Prot Function]