

## Product datasheet for **MG209249**

### Ankrd24 (BC017633) Mouse Tagged ORF Clone

#### Product data:

Product Type:	Expression Plasmids
Product Name:	Ankrd24 (BC017633) Mouse Tagged ORF Clone
Tag:	TurboGFP
Symbol:	Ankrd24
Synonyms:	4631433D01Rik; 5730519E19Rik; D10Bur2e
Mammalian Cell Selection:	Neomycin
Vector:	pCMV6-AC-GFP (PS100010)
E. coli Selection:	Ampicillin (100 ug/mL)



[View online »](#)

**ORF Nucleotide Sequence:**

>MG209249 representing BC017633  
 Red=Cloning site Blue=ORF Green=Tags(s)

TTTTGTAATACGACTCACTATAGGGCGGCCGGAATTCGTCGACTGGATCCGGTACCGAGGAGATCTGCC  
 GCC**GCGATCGCC**

ATGCCTGACTTCCAGGAGCTGATGCACTGATGCCAAAGAACCAGAGTCCATCAGCAGAGGAAATAGTTG  
 CTTCCTACAGGAGCAGGTGGCTCAGCTACCAGGCAGAACCAGGAGCTGCTGGAAAAGGTCAGATCCT  
 TGAGGAGTTTAAAAGGATGAGGCGCAGATGGCAGAAGAAAGTCAGGCCGAGGTCGTCGCCCTGGTCTTG  
 TATGAATCCTTACGGGCAGAGCTTGAGCAGCTTCGGAGGCAATACACAGAGGCCATGCATTCGCAGCAGC  
 AGCAGCAGGAGGGGAGCCACCCAGGGCTCAAGAAGGAGAAGAGACAGCATACCAGGAAATCAAGGATAA  
 GGGAACTACTATCCAGAATGGACCCAGCGTCCCAGACCTCAACGGCACCACATATGCAGAAAACAAAGCA  
 AATGGAATGGAATCCAAGCAGGAGGCTCAAGGGTGTCTGGAATACTGAAGCAGGGGTTTCAGAAGCAG  
 CACCCATAGAACCCGAGGCTGCAGGTTCCAGAGGCCACGGGAAAGACAGACTGGCAGCCAAGGAAATGGA  
 CACTAGTGTACTATGGCTGAGGCCCTAAATGTGAAAGCTCTAGGTGACAATGCCGAAAGTGAGCCAGTG  
 GCTGCCGAAGATACAGGAGGAAAAGAGAATCCAGGAATGAAAGCTGATGAGGTGGATGTGTTGGCACAGG  
 CAGGGCTCACAGGTACAGTGATTAGAAACATGGAGGCCATCGGAGTGCGGGATACAGGAATTCAGGCCAC  
 AGGATTAGAGGCTAAGGCAGTGAAGACCACTGGAGTGCAGGCCACAGTGGCGGAGGTCATAGGAGTGAAG  
 GTCACAGGAGTGCAGACCACAGCGATAGAAGCTATAGGAGTCAAGGACACCACCCAGGTGGCCACAGGAG  
 CGCAGGCCGATTGCTGGCAGGCCACGGAGGCAGACTGCACCGAGCGCAGGACACAGCTATGGAGCCAC  
 GGGGGCACAGGCCACTGTGACAGAGACTACGGAAGCCGAGACCAGCGGCACGGAGGACCCCTTGCCTGCG  
 ATCCTGCACCCGGGGCGGGCGGGCGGGCTGCAGGCCGAGCTGGAGACCCGGATCCGCGGTCTGGAGG  
 AGCGCTACGCAGAAGGGAGCGGGAGGCTGCGGCCGAGTTAGAGGCTGCTCGGGCCGTTTTCAGAGGC  
 TGAGGAGCGCGCGGGGCGGAGCCGCGAGCTAGAGGCCGCTTCGGGAATTGCTGGCCACGGCCACGGCT  
 ACCGGCGAGCGCCACGCACAGAGGCCGCGGAGTTGCGCCAAGCGCTAGCTGCCTCCGAGGCTCGGGTCCG  
 CCGAACTCAGCTTACCCTGGACGCCGCTCGCAGGAGGCTGGAGCGCATGCGCGGGGCTCGGTTCTGCG  
 GGACGAGCAGCAGCAGCGCTGAGCGCCCTGCGCGACCACGTGACCCGGCTGCAGGCGCAGCTGGCGGAC  
 CTGGCGCGCAGGCACGAGAAGACTAGCGCAGAGGCTTCCAGATCACAGACCTGTCAAAGAAGTCTTTA  
 CACTGAAGGAGGCTCTGAAGGTGCAGCAGTCCACCCAGCCAGCTCCAAGGAGGAGGAGGCTCTGCGCGG  
 CCAGGTGACAGCCCTGCAGCAGCAGATACAGGAGGAGGCCGGGAGCATGGCGCTGTGGTGGCTTTATAC  
 CGCACCCATCTCCTGTATGCCATTACAGGACAGATGGATGAGGATGTACAGTGCATTTTGGCCAGATTC  
 TGCAGATGCAGCGGCTTCAGGCTCAGGGTCCG

**ACGCGTACGCGGCCGCTCGAG** - GFP Tag - GTTTAA

**Protein Sequence:**

>MG209249 representing BC017633  
 Red=Cloning site Green=Tags(s)

MPDFPGADALMPKNQSPSAEEIVASLQEVAQLTRQNQELLEKVVQILEEFKDEAQMEESSQAEVPLVL  
 YESLRAELEQLRRQYTEAMHSQQQQEGEPPRAQEGEETAYQEIKDKGITIQNGPSVPLNGTTYAETKA  
 NGMELQAGGSKGVWNTAEVSEAAPIEPEAAGSEATGKDRLAAKEMDTSATMAEALNVKALGDNAESEP  
 AAEDTGGKENPGMKADEVDVLAQAGLTGTVIRNMEAIGVRDTGIQATGLEAKAVKTTGVQATVAEIVGK  
 VTGVQTTAIEAIGVKDTTQVATGAQADCWQATEADCTGAQDTAMEPTGAQATVTETTEAETSGTEDPCAA  
 ILHPGAAAAALQAELETRIRGLEEALRRRERAAAAELEAARGRF AEAAAARGRSRELEALRELLATATA  
 TGERARTEAAELRQALAASEARVAEL SSTVDAAREELERMARGASVPADEHEHALSALRDHVTRLQAQLAD  
 LARRHEKTSAEVFQITDLSKEVFTLKEALKVQQSTPASSKEEEALRGQVTALQQQIQEEAREHGAVVALY  
 RTHLLYAIQGMDEDVQCILSQILQMQLQAQGR

**TRTRPLE** - GFP Tag - V

**Restriction Sites:**

Sgfl-MluI

**Cloning Scheme:**


**ACCN:** BC017633

**ORF Size:** 1784 bp

**OTI Disclaimer:** The molecular sequence of this clone aligns with the gene accession number as a point of reference only. However, individual transcript sequences of the same gene can differ through naturally occurring variations (e.g. polymorphisms), each with its own valid existence. This clone is substantially in agreement with the reference, but a complete review of all prevailing variants is recommended prior to use. [More info](#)

**OTI Annotation:** This clone was engineered to express the complete ORF with an expression tag. Expression varies depending on the nature of the gene.

**Components:** The ORF clone is ion-exchange column purified and shipped in a 2D barcoded Matrix tube containing 10ug of transfection-ready, dried plasmid DNA (reconstitute with 100 ul of water).

**Reconstitution Method:**

1. Centrifuge at 5,000xg for 5min.
2. Carefully open the tube and add 100ul of sterile water to dissolve the DNA.
3. Close the tube and incubate for 10 minutes at room temperature.
4. Briefly vortex the tube and then do a quick spin (less than 5000xg) to concentrate the liquid at the bottom.
5. Store the suspended plasmid at -20°C. The DNA is stable for at least one year from date of shipping when stored at -20°C.

**RefSeq:** [BC017633](#), [AAH17633](#)

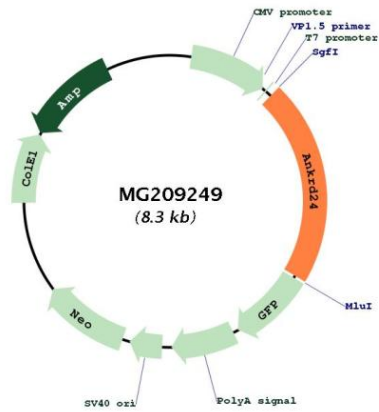
**RefSeq Size:** 2339 bp

**RefSeq ORF:** 1784 bp

**Locus ID:** 70615

**Cytogenetics:** 10 39.72 cM

Product images:



Circular map for MG209249