

Product datasheet for **MG209248**

Acot11 (NM_025590) Mouse Tagged ORF Clone

Product data:

| | |
|---------------------------|---|
| Product Type: | Expression Plasmids |
| Product Name: | Acot11 (NM_025590) Mouse Tagged ORF Clone |
| Tag: | TurboGFP |
| Symbol: | Acot11 |
| Synonyms: | 1110020M10Rik; 2010309H15Rik; AW060409; BFIT; BFIT1; mKIAA0707; Thea; Them1 |
| Mammalian Cell Selection: | Neomycin |
| Vector: | pCMV6-AC-GFP (PS100010) |
| E. coli Selection: | Ampicillin (100 ug/mL) |



[View online »](#)

ORF Nucleotide Sequence:

>MG209248 representing NM_025590
 Red=Cloning site Blue=ORF Green=Tags(s)

TTTTGTAATACGACTCACTATAGGGCGGCCGGAATTCGTCGACTGGATCCGGTACCGAGGAGATCTGCC
 GCC**GCGATCGCC**

ATGATTCAAGATGTGGGCAACCACTTGCAGGGGCTTCGCCTCTATGTTCTCTAATCGCACATCCCGGA
 AGTCAATCTCCATCCGGAGTCTGGAGACCCTCTACCATGGCAGAGGGTGAAGGATACCGAACCACCCAC
 GGAGGTGCAGATGAGCCAGCTGGTACTGCCCTGCCACACCAACCACCGTGGGGAGCTGAGCATTGGACAG
 TTGCTCAAGTGGATCGACACCACAGCCTGCCTATCAGCGGAGAGGCATGCTGGCTGTCCCTGCGTCACAG
 CCTCTATGGATGACATCTACTTCGACCATACCATTAGTGTGCGCCAAGTGGTGAATATCAAGGCCAAGGT
 GAACCGGGCCTTCAACTCCAGCATGGAGGTGGGAATCCAGGTGGTCTCTGAGGATCTGTGCTCTGAGAAG
 CAGTGGAGTGTCTGCAAGGCCTTGGCCACCTTTGTGGCCACCGGGAGCTCTCAAGGTGAAGCTGAAGC
 AGGTCATCCATTGACCGAGGAGGAGAAGACTGAACATGGGGTGGCGGCTGAGCGCCGGCGTATGCGACT
 GGTCTATGCAGACACCATCAAAGATCTCCTAACCCACTGTGTATCCAGGACGATTTGGACAAGGACTGC
 AGCAATATGGTGGCAGCCGAGAAGACCCGAGTGGAGAGTGTGGAGCTGGTGTGCTCCTCACGCCAATC
 ATCAGGGCAATACCTTCGGGGGACAGATCATGGCTTGGATGGAGAATGTGGCCACCATTGCAGCCAGCCG
 GCTCTGTACGCCACCCTACGCTCAAGGCCATCGAGATGTTCCATTTCCGAGGCCCGTCTCAGGTGGGG
 GACCGTCTGGTGTCAAGGCCATCGTGAATAACGCCTTTAAGCACAGCATGGAGGTGGGTGTGTGTGTGG
 AGGCGTACCGCCAGGAAGCTGAGACCCAGCGCCGGCACATCAACAGCGCCTTCATGACCTTCGTGGTCTCT
 GGACAAAGATGACCAGCCTCAGAAGCTGCCCTGGATTCTGCCAGCCTGGAGAGGGTGAACGGCGATAC
 CGAGAAGCCAGTCCAGGAAGAAGATCCGCCTGGACAGGAAATACCTTGTGTCTGTAAGCAGGCAGAAG
 TGGCCCTGTCTGTCCCTGGGACCCTAGCAACCAAGGTATACCTGAGCTACTACAACGTCTCCTCTGAA
 GACGCTCATGGCCAAGGACAACCTGGGTGCTGTCCGTGGAGATCAGCGAGGTCCGCCTGTACATCCTAGAA
 GAGGACTTCTCTCTTTCACTTGGAGATGGTGGTAAATGTGGATGCCGCCAGGTCTTTAGCTGCTGT
 CAGACCTGCGCAGGAGACCAGAGTGGGACAAGCATTACCGGAGTGTGGAGCTGGTGCAGCAAGTGGATGA
 GGATGACGCCATCTACCACGTATCAGCCCCGCCCTGAGCGGGAACCAAGCCCAAGGACTTTGTGATC
 CTGGCCTTAGGGCGAAGCCTTGTGACAATGGGGACCCCTATGTCATTGCCCTGAGGTGGTGCAGCTGC
 CCACGCACCATGAGACACCGGAATACCAACGTGGGGAGACTCTCTGTTCAAGGCTTCTGTCTGTGGCGTGA
 GGGGGACCAGATGACTAAGTTTTCTACTACAACCAAGGCCACCCCGGCTTTCTCAACTATGTGACCACC
 AATGTGTCCGGCCTGTCTCAGAATTCTACAACACTTTCAAGGCTTGTGAGAGTTTTCTGTTGGACAACC
 GGAAATGACCTAGCTCCAGCCTCCAGACCCTC

ACGCGTACGCGGCCGCTCGAG - GFP Tag - GTTTAA

Protein Sequence:

>MG209248 representing NM_025590
 Red=Cloning site Green=Tags(s)

MIQVGNHLRRGFASMFNRTSRKSI SHPESGDPPTMAEGEGYRNPTEVQMSQLVLPCHTNHRGELSIGQ
 LLKWI DT TA CL SAERHAGCPCVTASMDIYFDHTISVGQV VNIKAKVNRAFNSMEVGIQV VSEDL CSEK
 QWSVCKALATFVAHREL SKV K L K Q V I P L T E E E K T E H G V A E R R R M R L V Y A D T I K D L L T H C V I Q D D L D K D C
 S N M V P A E K T R V E S V E L V L P P H A N H Q G N T F G G Q I M A W M E N V A T I A A S R L C H A H P T L K A I E M F H R G P S Q V G
 D R L V L K A I V N N A F K H S M E V G C V E A Y R Q E A E T Q R R H I N S A F M T F V V L D K D D Q P Q K L P W I R P Q P G E G E R R Y
 R E A S A R K K I R L D R K Y L V S C K Q A E V A L S V P W D P S N Q V Y L S Y Y N V S S L K T L M A K D N W V L S V E I S E V R L Y I L E
 E D F L S F H L E M V V N V D A A Q V F Q L L S D L R R R P E W D K H Y R S V E L V Q Q V D E D D A I Y H V I S P A L S G N T K P Q D F V I
 L A S R R K P C D N G D P Y V I A L R S V T L P T H H E T P E Y Q R G E T L C S G F C L W R E G D Q M T K V S Y Y N Q A T P G F L N Y V T T
 N V S G L S S E F Y N T F K A C E S F L L D N R N D L A P S L Q T L

TRTRPLE - GFP Tag - V

Restriction Sites:

Sgfl-MluI

Cloning Scheme:


ACCN: NM_025590

ORF Size: 1782 bp

OTI Disclaimer: The molecular sequence of this clone aligns with the gene accession number as a point of reference only. However, individual transcript sequences of the same gene can differ through naturally occurring variations (e.g. polymorphisms), each with its own valid existence. This clone is substantially in agreement with the reference, but a complete review of all prevailing variants is recommended prior to use. [More info](#)

OTI Annotation: This clone was engineered to express the complete ORF with an expression tag. Expression varies depending on the nature of the gene.

Components: The ORF clone is ion-exchange column purified and shipped in a 2D barcoded Matrix tube containing 10ug of transfection-ready, dried plasmid DNA (reconstitute with 100 ul of water).

Reconstitution Method:

1. Centrifuge at 5,000xg for 5min.
2. Carefully open the tube and add 100ul of sterile water to dissolve the DNA.
3. Close the tube and incubate for 10 minutes at room temperature.
4. Briefly vortex the tube and then do a quick spin (less than 5000xg) to concentrate the liquid at the bottom.
5. Store the suspended plasmid at -20°C. The DNA is stable for at least one year from date of shipping when stored at -20°C.

Note: Plasmids are not sterile. For experiments where strict sterility is required, filtration with 0.22um filter is required.

RefSeq: [NM_025590.4](#), [NP_079866.2](#)

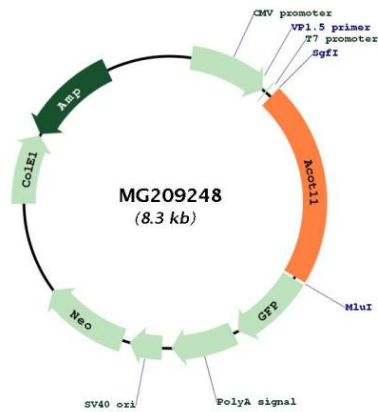
RefSeq Size: 5668 bp

RefSeq ORF: 1785 bp

Locus ID: 329910

UniProt ID: [Q8VHQ9](#)
 Cytogenetics: 4 C7
 Gene Summary: Has an acyl-CoA thioesterase activity with a preference for the long chain fatty acyl-CoA thioesters hexadecanoyl-CoA/palmitoyl-CoA and tetradecanoyl-CoA/myristoyl-CoA which are the main substrates in the mitochondrial beta-oxidation pathway.[UniProtKB/Swiss-Prot Function]

Product images:



Circular map for MG209248