

Product datasheet for **MG209221**

Canx (NM_007597) Mouse Tagged ORF Clone

Product data:

| | |
|---------------------------|--|
| Product Type: | Expression Plasmids |
| Product Name: | Canx (NM_007597) Mouse Tagged ORF Clone |
| Tag: | TurboGFP |
| Symbol: | Canx |
| Synonyms: | 1110069N15Rik; AI988026; Cnx; D11Erttd153e |
| Mammalian Cell Selection: | Neomycin |
| Vector: | pCMV6-AC-GFP (PS100010) |
| E. coli Selection: | Ampicillin (100 ug/mL) |



[View online »](#)

ORF Nucleotide Sequence:

>MG209221 representing NM_007597
 Red=Cloning site Blue=ORF Green=Tags(s)

TTTTGTAATACGACTCACTATAGGGCGGCCGGAATTCGTCGACTGGATCCGGTACCGAGGAGATCTGCC
 GCC**CGCATCGCC**

ATGGAAGGAAGTGGTTACTGTGTTGCTGCTGGTCTTGAAGTGCAGCTGTTGAGGCTCATGATGGAC
 ATGATGATGACGCGATTGATATTGAAGATGATCTTGATGATGTTATTGAAGAGGTAGAAGATTCAAATC
 TAAATCAGATGCCAGCACTCCTCCATCTCCAAAGTCCACACAAAGCTCCAGTTCCAACAGGGGAGGTT
 TATTTTGTGCTACTCCTTTGACAGAGGCTCTGTGAGGGTGGATTTTATCTAAAGCCAAAAAAGATGACA
 CTGATGATGAAATTGCCAAATATGATGGAAAGTGGGAAGTAGATGAGATGAAGGAAACAAAGCTTCCAGG
 GGATAAAGGACTTGTACTGATGTCTCGGGCCAAGCATCATGCCATCTCTGCTAACTGAATAAGCCCTTC
 CTGTTTGATACCAAGCCTCTCATTGTTCCAGTATGAGGTTAATTTTCAGAATGGAATAGAATGTGGTGGT
 CCTATGTGAAGCTGCTTCCAAGACGGCAGAGCTCAGCCTGGATCAATCCACGACAAGACTCCCTATAC
 TATTATGTTTGGTCCAGATAAGTGTGGAGAGGACTACAACTGCATTTTCATCTTTTCGACACAAAAATCCC
 AAGACAGGTGTATATGAAGAAAAACATGCTAAGAGGCCAGATGCAGATCTGAAGACCTATTTCACTGACA
 AGAAAAACGCATCTTTATACATTAATCTTGAATCCAGACAATAGTTTTGAAATATTAGTTGACCAGTCTGT
 TGTGAACAGTGGAAATCTGCTAAATGACATGACTCCTCTGTAAACCTTCACGTGAAATTGAAGACCCA
 GAAGACCGGAAGCCTGAAGATTGGGATGAAAGGCCAAAAATAGCAGATCCAGATGCTGTCAAGCCAGATG
 ACTGGGATGAAGACGCCCTTCTAAGATCCCAGATGAAGAGGCCACCAAGCCTGAAGGCTGGCTAGACGA
 CGAACCTGAGTATATCCAGACCCTGATGCAGAGAAGCCAGAGGATTGGGATGAGGATATGGACGGAGAA
 TGGGAGGCTCCTCAGATTGCCAACCCCAAGTGTGAGTCAAGCCCTGAGTGTGATGATGATGATGATGAT
 TGATTGACAACCCCAATTATAAGGGCAAATGGAAGCCTCCAATGATTGACAACCCCAACTACCAGGGAAT
 CTGGAAACCAAGGAAAAATACCAATCCAGATTTCTTTGAAGACCTAGAACCTTTTAAGATGACTCCTTTC
 AGTGCTATTGGTTGGAGCTCTGGTCCATGACATCCGACATCTTTTTTGACAACCTTATCATTAGTGGTG
 ACCGAAGAGTAGTTGATGATTGGGCAATGATGGGTGGGGCTGAAGAAAGCTGCTGATGGGGCTGCTGA
 GCCAGGTGATGCTGCAGATGCTGGAGGCAGCTGAAGAGCGTCCATGGCTTTGGGTGGTCTACATTTTG
 ACTGTAGCTTTGCCAGTGTCTTGTGATCCTCTTCTGCTGTTCTGAAAAGAAACAGTCCAATGCTATGG
 AGTACAAGAAGACGGATGCTCCCAGCCAGATGTGAAGGATGAAGAAGGGAAGGAAGAAGAAGAACAA
 GAGGGATGAAGAGGAAGAAGAGGAGAAGCTTGAAGAGAAACAGAAGAGTGTGCTGAAGAAGATGGTGT
 ACTGGCAGTCAAGATGAGGAAGATAGCAAGCCTAAAGCAGAGGAGGATGAAATTTTGAACAGATCGCCAA
 GAAACAGAAAGCCACGAAGAGAG

ACGCGTACGCGGCCGCTCGAG – GFP Tag – GTTTAA

Protein Sequence:

>MG209221 representing NM_007597
 Red=Cloning site Green=Tags(s)

MEGWLLCLLLVLGTAAVEAHDGHDDDAIDIEDLDDVIEEVEDSKSKSDASTPPSPKVITYKAPVPTGEV
 YFADSFDRGSLSGWILSKAKKDDTDEIAKYDGKWEVDEMKETLPGDKGLVLMsRAKHHAISAKLNKPF
 LFDTKPLIVQYEVNFQNGIECGGAYVKLLSKTAE LSLDQFHDKTPYTIMFGPDKCGEDYKLFIFRHKNP
 KTGvYEEKHAKRPDADLKYFTDKKTHLYTLILNPDNSFEILVDQSVVNSGNLLNDMTPPVNPSREIEDP
 EDRKPEDWDERPKIADPDAVKPDDWEDAPSKIPDEEATKPEGWLDDEPEYIPDPDAEKPEDWDEDMDGE
 WEAPQIANPKCESAPGCGVWQRP MIDNPNYKWKWPPMIDNPNYQGIWKPRKIPNPDFFEDLEPFKMPF
 SAIGLELWSMTSDIFFDNFIISGDRRVVDDWANDGWGLKKAADGAAEPGVVLQMLEAAEERPWLVVYIIL
 TVALPVFLVILFCCSGKKQSNAMAYKKTDPQPDYKDEEGKEEKNKRDEEEEEKLEEKQKSDAEEDGV
 TGSQDEEDSKPKAEDEILNRSRNRKPRRE

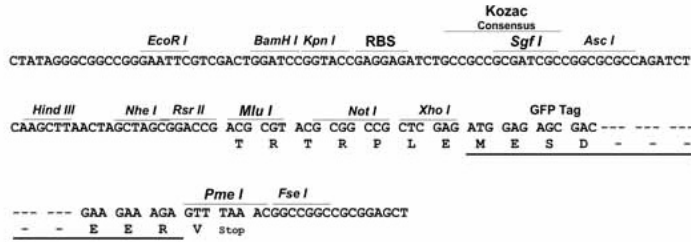
TRTRPLE – GFP Tag – V

Restriction Sites:

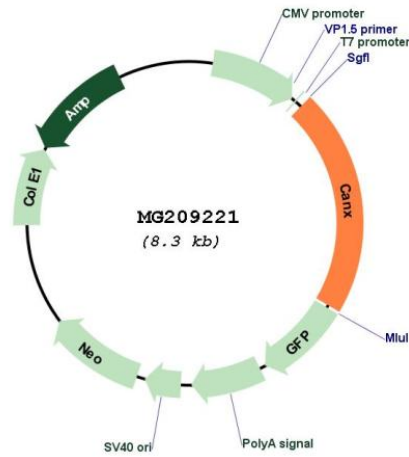
Sgfl-MluI

Cloning Scheme:

Cloning sites used for ORF Shutting:



Plasmid Map:



ACCN: NM_007597
 ORF Size: 4289 bp

| | |
|-------------------------------|--|
| OTI Disclaimer: | The molecular sequence of this clone aligns with the gene accession number as a point of reference only. However, individual transcript sequences of the same gene can differ through naturally occurring variations (e.g. polymorphisms), each with its own valid existence. This clone is substantially in agreement with the reference, but a complete review of all prevailing variants is recommended prior to use. More info |
| OTI Annotation: | This clone was engineered to express the complete ORF with an expression tag. Expression varies depending on the nature of the gene. |
| Components: | The ORF clone is ion-exchange column purified and shipped in a 2D barcoded Matrix tube containing 10ug of transfection-ready, dried plasmid DNA (reconstitute with 100 ul of water). |
| Reconstitution Method: | <ol style="list-style-type: none">1. Centrifuge at 5,000xg for 5min.2. Carefully open the tube and add 100ul of sterile water to dissolve the DNA.3. Close the tube and incubate for 10 minutes at room temperature.4. Briefly vortex the tube and then do a quick spin (less than 5000xg) to concentrate the liquid at the bottom.5. Store the suspended plasmid at -20°C. The DNA is stable for at least one year from date of shipping when stored at -20°C. |
| RefSeq: | NM_007597.3 , NP_031623.1 |
| RefSeq Size: | 3739 bp |
| RefSeq ORF: | 1776 bp |
| Locus ID: | 12330 |
| UniProt ID: | P35564 |
| Cytogenetics: | 11 30.46 cM |
| Gene Summary: | Calcium-binding protein that interacts with newly synthesized glycoproteins in the endoplasmic reticulum. It may act in assisting protein assembly and/or in the retention within the ER of unassembled protein subunits. It seems to play a major role in the quality control apparatus of the ER by the retention of incorrectly folded proteins. Associated with partial T-cell antigen receptor complexes that escape the ER of immature thymocytes, it may function as a signaling complex regulating thymocyte maturation. Additionally it may play a role in receptor-mediated endocytosis at the synapse.[UniProtKB/Swiss-Prot Function] |