

Product datasheet for **MG209210**

Atad3a (NM_179203) Mouse Tagged ORF Clone

Product data:

Product Type:	Expression Plasmids
Product Name:	Atad3a (NM_179203) Mouse Tagged ORF Clone
Tag:	TurboGFP
Symbol:	Atad3a
Synonyms:	2400004H09Rik; Atad3; mKIAA1273; Tob3
Mammalian Cell Selection:	Neomycin
Vector:	pCMV6-AC-GFP (PS100010)
E. coli Selection:	Ampicillin (100 ug/mL)



[View online »](#)

ORF Nucleotide Sequence:

>MG209210 representing NM_179203
 Red=Cloning site Blue=ORF Green=Tags(s)

TTTTGTAATACGACTCACTATAGGGCGGCCGGGAATTCGTCGACTGGATCCGGTACCGAGGAGATCTGCC
 GCC**GCGATCGCC**

ATGTCGTGGCTCTTCGGCATCAAGGGCCCCAAGGGCGAAGGCACAGGGCCTCCGCTGCCCTTGCCGCCCC
 CTAACCCGGGGCGGAGGGCGCGGTGACCGCGGGCGGGAGACCGCCATCGCCCAAGGACAAATGGAG
 CAACTTCGACCCGACGGGCTGGAACGTGCGGCCAAAGCGGCTCGCGAGTTGGAGCACTCGCGCCATGCC
 AAGGAGGCACTGAGTCTCGCACAGATGCAGGAGCAGACGCTGCAGCTGGAACAGCAGTCCAAGCTCAAGG
 AGTACGAAGCTGCCGTAGAGCAGCTGAAGAGCGAACAGATCCGTGTGCAAGCCGAGGAAAGAAGGAAAAAC
 CCTGACTGAAGAGACACGACAGCACCAGGCTAGGGCCAGTACCAGGATAAGCTCGCTCGACAGCGCTAT
 GAGGACCAGCTGAAACAACAGCAACTTCTGAATGAAGAGAATTTAAGGAAACAAGAGGAGTCTGTGCAGA
 AGCAGGAGGCCATACGGCGAGCCACTGTGGAGCGCGAGATGGAGCTGAGGCATAAAAACGAGATGTTGCC
 GGTGGAAGCTGAAGCCCAGCACGGGCCAAGGCTGATCGAGAGAATGCAGATATCATCCGGGAACAGATT
 CGACTCAAGGCTGCTGAGCACCGCCAGACCATCTTGGAGTCTATCAGGACAGCTGGCACCTTGCTTGGTG
 AAGGATCCGTGCATTTGTGACAGACTGGGACAAAGTGACAGCTACGGTGGCTGGTTGACACTATTAGC
 TGTTGGAGTCTATTCTGCAAAGAATGCTACTTCTGTTGCTGGTCCGTATATTGAGGCCGATTGGGAAAAG
 CCGTCCTTGGTGAGAGAGACCTCCCGAATCTCAGTGCTAGAGGCATTGAGGCATCCCATCCAGGTCAGCA
 GCGACTGGTTCAGCAGACCCAGGATGCATTGGAGGGCGTCATCCTCAGTCTAGCCTGGAGGCACGGGT
 CCGAGATATTGCCATCGCAACAAGAAAATACCAAGAAGAACAAAAGCCTGTATAGGAACGTTCTGATGAT
 GGGCCCCGGGGACTGGCAAGACACTATTGCCAAGAACTTGCCTGCATTGAGGATGGACTTTCGACTG
 TCATGACAGGCGGGGACGTGGCCCCAATGGGGCGGGAGGGTGTGACTGCCATGCACAAGGCTTTCGACTG
 GGCAAGCACAGCCGACGAGGCCTCCTGCTCTTTGGATGAAGCAGACGCCTTCCCTCAGGAAACGAGCG
 ACTGAAAAGATAAGTGAAGACCTCAGGGTACTCTGAATGCCTTCTACAGGACAGGACAGCAGCAGTA
 GTAAGTTCATGCTGGTCTGGCCAGTAACCAGCCTGAGCAGTTTGATTGGGCTATCAATGACCGCATTGA
 CGAGATGGTCTGCTTTGCCCTGCCACAGCGGGAGGAGCGAGAGCGCCTGGTGAGAATGTATTTTGACAAG
 TATGTCCTTAAGCCGGCCACAGAAGGAAAGCAGCGCTTGAAGGTGGCCAGTTTGACTATGGAAAGAAAT
 GCTCAGAGTTGCCAGTAACGGAGGGGATGTCAGGCCGGGAGATTGCTCAGCTTGCTGTGGCGTGGCA
 GGCCATGGCATATTCATCTGAGGATGGAGTCTCACGGAAGCTATGATGGATGCCCGTGTGCAGGATGCT
 GTGCAGCAGCACCAGCAGAAGATGCAGTGGCTTAAAGTAGAGAGACCCGATTCCAGACCAACAAGCCGC
 CACATCCTTCACTCCTCAGCTGC

ACGCGTACGCGGCCGCTCGAG - GFP Tag - GTTTAA

Protein Sequence:

>MG209210 representing NM_179203
 Red=Cloning site Green=Tags(s)

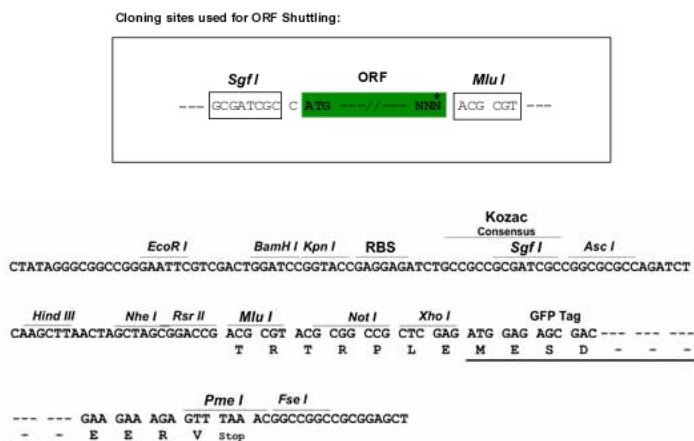
MSWLFGIKGPKEGTGPPLPLPPAQPGEAGGGDRGAGDRPSPKDKWSNFDPTGLERAACAARELEHSRHA
 KEALSLAQMQEQLQLEQQSKLKEYEAAVEQLKSEQIRVQAEERRKLTETEQRHQARAQYQDKLARQRY
 EDQLKQQQLLNEENLRKQEEVQKQEAIRRATVEREMELRHKNEMLRVEAEARARAKADRENADIIREQI
 RLKAAEHRQTILESIRTAGTLLGEGFRAFVTDWKVTATVAGLTLLAVGVYSAKNATSVAGRYIEARLGK
 PSLVRETSRISVLEALRHPIQVSRRLVSRPQDALEGVILSPSLEARVRDIAIATRNTKKNKSLYRNVLMY
 GPPGTGKTLFAKKLALHSGMDYAIMTGGDVAPMREGVTAHMKVFDWASTSRRGLLLFVDEADAF LRKRA
 TEKISEDLRATLNAFLHRTGQHSKFMLVLASNQPEQFDWAINDRIDEMVCFALPQREERERLVRMYFDK
 YVLKPATGKQRLKVAQFDYGGKCEVAQLTEGMSGREIAQLAVAWQAMAYSSSEDGVLTEAMMDARVQDA
 VQQHQQKMQWLKVERPDSQTNKPPHPSLLSC

TRTRPLE - GFP Tag - V

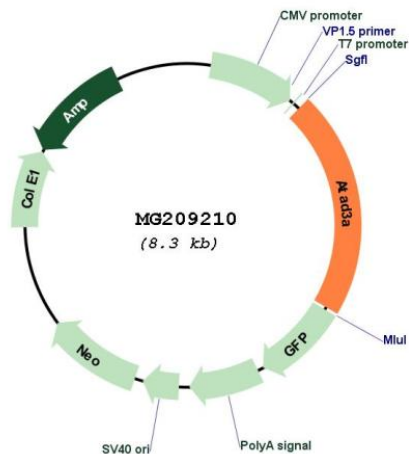
Restriction Sites:

Sgfl-MluI

Cloning Scheme:



Plasmid Map:



ACCN: NM_179203

ORF Size: 1773 bp

OTI Disclaimer:	The molecular sequence of this clone aligns with the gene accession number as a point of reference only. However, individual transcript sequences of the same gene can differ through naturally occurring variations (e.g. polymorphisms), each with its own valid existence. This clone is substantially in agreement with the reference, but a complete review of all prevailing variants is recommended prior to use. More info
OTI Annotation:	This clone was engineered to express the complete ORF with an expression tag. Expression varies depending on the nature of the gene.
Components:	The ORF clone is ion-exchange column purified and shipped in a 2D barcoded Matrix tube containing 10ug of transfection-ready, dried plasmid DNA (reconstitute with 100 ul of water).
Reconstitution Method:	<ol style="list-style-type: none">1. Centrifuge at 5,000xg for 5min.2. Carefully open the tube and add 100ul of sterile water to dissolve the DNA.3. Close the tube and incubate for 10 minutes at room temperature.4. Briefly vortex the tube and then do a quick spin (less than 5000xg) to concentrate the liquid at the bottom.5. Store the suspended plasmid at -20°C. The DNA is stable for at least one year from date of shipping when stored at -20°C.
RefSeq:	NM_179203.3
RefSeq Size:	2414 bp
RefSeq ORF:	1776 bp
Locus ID:	108888
UniProt ID:	Q92511
Cytogenetics:	4 E2
Gene Summary:	Essential for mitochondrial network organization, mitochondrial metabolism and cell growth at organism and cellular level. May play an important role in mitochondrial protein synthesis. May also participate in mitochondrial DNA replication. May bind to mitochondrial DNA D-loops and contribute to nucleoid stability. Required for enhanced channeling of cholesterol for hormone-dependent steroidogenesis (By similarity).[UniProtKB/Swiss-Prot Function]