

Product datasheet for **MG209179**

Lmnb1 (NM_010721) Mouse Tagged ORF Clone

Product data:

Product Type:	Expression Plasmids
Product Name:	Lmnb1 (NM_010721) Mouse Tagged ORF Clone
Tag:	TurboGFP
Symbol:	Lmnb1
Mammalian Cell Selection:	Neomycin
Vector:	pCMV6-AC-GFP (PS100010)
E. coli Selection:	Ampicillin (100 ug/mL)



[View online »](#)

ORF Nucleotide Sequence:

>MG209179 representing NM_010721
 Red=Cloning site Blue=ORF Green=Tags(s)

TTTTGTAATACGACTCACTATAGGGCGGCCGGGAATTCGTCGACTGGATCCGGTACCGAGGAGATCTGCC
 GCCGCGATCGCC

ATGGCGACCGCGACCCCCGTGCAGCAGCAGCGGGCGGGCAGCCGCGCCAGCGCCCCGCCACGCCGCTCA
 GCCCACGCGCCTGTGCGCCTGCAGGAGAAAGAGGAGCTGCGGGAGCTCAACGACCGCCTGGCTGTGTA
 CATCGATAAGGTGCGCAGCCTGGAGACGGAGAACAGCGCCTGCAGCTGCAGGTGACCGAGCGCAGGAG
 GTGCGCGGCCGCGAGCTCACCGCCTCAAGGCTCTCTACGAGACCGAGCTGGCCGACGCACGCCGCGCTC
 TGGACGACACGGCCGCGAGCGCCCAAGCTCCAGATCGAGCTGGCAAGTTCAAGGCCGAGCAGACCA
 GCTGCTGCTCAATTATGCCAAGAAGGAATCTGATCTCAGTGGAGCCAGATCAAGCTTCGAGAGTATGAG
 GCGGCACTAAACTCTAAGGATGCGGCGTGGCTACTGCCCTAGGGGACAAAAAGAGTTTAGAGGGAGACT
 TGGAGGATCTGAAAGATCAGATTGCCAGCTAGAAGCATCCTTATCTGCCGCAAAAAGCAGTTAGCAGA
 TGAACCTTACTTAAAGTGGATTTGGAGAATCGCTGTCAGAGCCTTACTGAGGACTTGGAGTTTCGTA
 AATATGTATGAAGAGGAGATCAATGAGACAAGGAGGAAGCATGAGACCCGCTTGGTGAAGTGGACTCTG
 GCGTCAGATTGAGTATGAGTACAAGCTGGCTCAAGCCCTGCATGAGATGCGGGAGCAGCAGCAGCGCA
 GGTGAGGCTGTACAAGGAAGAGCTGGAGCAGACCTACCACGCCAAGCTTGAGAATGCCAGACTCTCCTCA
 GAGATGAACACTTCCACTGTCAACAGTGCCCGGAAGAGCTGATGGAGAGCCGGATGAGGATCGAGAGCC
 TCTCCTCACAGCTCTTAACTGCAGAAAGAGTCTAGAGCGTGTGGAAAGGATCCAGGAATTGGAGGA
 CATGCTTGCTAAGGAGAGAGACAACTCGCGCCGATGCTGTCTGACAGAGAGAGAGATGGCGGAGATC
 AGGGACAGATGCAGCAGCAGCTGAGTGATTATGAGCAGCTGCTGGACGTGAAGCTGGCCTGGACATGG
 AGTACAGCGCTACAGGAAGCTCCTGGAAGCGAAGAAGAGCGGTTAAAGCTCTCTCAAGCCCTTCTTC
 CCGGGTGACCGTGTCCAGAGCGTCTCCAGTCCGAGTGTGCGCACCAACAGAGGAAAGCGGAAGAGATT
 GATGTGGAGGAGTGGAGGCGAGCAGCAGTGTAGCATTTCCTCCTCAGCCACGGGAACGTGT
 GCATTGAAGAGATAGATGTTGATGGGAAGTTTATTCGCTTGAAGAACAATCTGAGCAGGATCAACCAAT
 GGGAGGCTGGGAGATGATCAGAAAAATTGGAGACACATCAGTCAGTTACAAATATACCTCAAGATATGTG
 CTGAAGGCTGGCCAGACTGTCACAGTGTGGGCTGCAAATGCTGGCGTCACAGCCAGCCCTCAACTGACC
 TCATCTGGAAGAACCAGAACTCTGGGGTACTGGTGAAGATGTGAAGTTATATTGAAGAATTCTCAGGG
 AGAGGAGGTTGCTCAGAGAAGCACAGTCTCAAGACCACCATACCCGAGGAGGAGGAGGAGGAGGAGGAG
 GAGCCCATCGGAGTGGCTGTGGAGGAGGAGCGTTCCACCAGCAGGGAGCCCAAGAGCATCCAATAAAA
 GCTGTGCCATTATG

ACGCGTACGCGGCCGCTCGAG - GFP Tag - GTTTAA

Protein Sequence:

>MG209179 representing NM_010721
 Red=Cloning site Green=Tags(s)

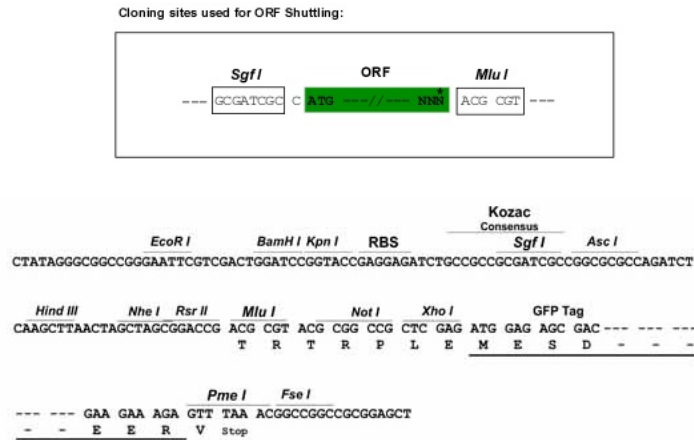
MATATPVQQRAGSRASAPATPLSPTRL SRLQEKEELRELNDRLAVYIDKVRSLLETENSALQLQVTEREE
 VRGREL TGLKAL YETELADARRALDDTARERAKLQIELGKFAEHDQLLLNYAKKESDLSGAQIKLREYE
 AALNSKDAALATALGDKKSLEGDLEDLKDQIAQLEASLSAAKKQLADETLLKVDLENRCQSLTEDLEFRK
 NMYEEEINETRRKHETRLVEVDSGRQIEYKYLAQALHEMREQHDAQVRLYKEELEQTYHAKLENARLSS
 EMNTSTVNSAREELMESRMRIESLSSQLSNLQKESRACLERIQELEDMLAKERDNSRRMLSDREREMAEI
 RDQMQQQLSDYEQLLDVKLALDMEISAYRKLLEGEERLKLSPSPSSRVTVSRASSRSVRTRRGRKRKRV
 DVEESEASSSVSISHSASATGNVCIEEIDVDGKFI RLKNTSEQDQPMGGWEMIRKIGDTSVSYKYTSRYV
 LKAGQTVTVWAANAGVTASPTDLIWKQNQNSWGTGEDVKVILKNSQGE EVAQRSTVFKTTIPEEEEEEEEE
 EPIGVAVEEERFHQQGAPRASNKSCAIM

TRTRPLE - GFP Tag - V

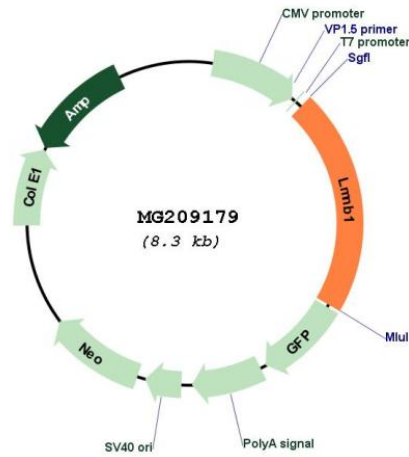
Restriction Sites:

Sgfl-Mlul

Cloning Scheme:



Plasmid Map:



ACCN:

NM_010721

ORF Size:	1764 bp
OTI Disclaimer:	The molecular sequence of this clone aligns with the gene accession number as a point of reference only. However, individual transcript sequences of the same gene can differ through naturally occurring variations (e.g. polymorphisms), each with its own valid existence. This clone is substantially in agreement with the reference, but a complete review of all prevailing variants is recommended prior to use. More info
OTI Annotation:	This clone was engineered to express the complete ORF with an expression tag. Expression varies depending on the nature of the gene.
Components:	The ORF clone is ion-exchange column purified and shipped in a 2D barcoded Matrix tube containing 10ug of transfection-ready, dried plasmid DNA (reconstitute with 100 ul of water).
Reconstitution Method:	<ol style="list-style-type: none">1. Centrifuge at 5,000xg for 5min.2. Carefully open the tube and add 100ul of sterile water to dissolve the DNA.3. Close the tube and incubate for 10 minutes at room temperature.4. Briefly vortex the tube and then do a quick spin (less than 5000xg) to concentrate the liquid at the bottom.5. Store the suspended plasmid at -20°C. The DNA is stable for at least one year from date of shipping when stored at -20°C.
RefSeq:	NM_010721.2 , NP_034851.2
RefSeq Size:	2871 bp
RefSeq ORF:	1767 bp
Locus ID:	16906
UniProt ID:	P14733
Cytogenetics:	18 30.84 cM
Gene Summary:	Lamins are components of the nuclear lamina, a fibrous layer on the nucleoplasmic side of the inner nuclear membrane, which is thought to provide a framework for the nuclear envelope and may also interact with chromatin.[UniProtKB/Swiss-Prot Function]