

Product datasheet for **MG209170**

Senp2 (NM_029457) Mouse Tagged ORF Clone

Product data:

Product Type:	Expression Plasmids
Product Name:	Senp2 (NM_029457) Mouse Tagged ORF Clone
Tag:	TurboGFP
Symbol:	Senp2
Synonyms:	2310007L05Rik; 4930538C18Rik; AI646780; AW554757; mKIAA1331; Smt3ip2; SuPr-1
Mammalian Cell Selection:	Neomycin
Vector:	pCMV6-AC-GFP (PS100010)
E. coli Selection:	Ampicillin (100 ug/mL)



[View online »](#)

ORF Nucleotide Sequence:

>MG209170 representing NM_029457
 Red=Cloning site Blue=ORF Green=Tags(s)

TTTTGTAATACGACTCACTATAGGGCGGCCGGAATTCGTCGACTGGATCCGGTACCGAGGAGATCTGCC
 GCC**CGGATCGCC**

ATGTACAGATGGCTGGCTAAGGTTCTCGCACCATTCTTCGTTGTGTGAGCGGCCCGCCCGGGGCC
 GCGCCCTACTCAAGAGGGCGCTCCAGCAGCACTCTGTTTTCTACTGCAGTGGACTGATGAGATCCC
 AGCCAAAAGGCCAAGATTAGATTGCTTTATTCACCAAGTGAAGAACAGTCTCTACAAATGCTGCCAGTTTA
 TTTGGATTCCCGTTCAGCTGACCACAAAACCATGGTGTCTTCTGCTTGAATGGAACACGGAATGTGG
 CCCCTTCTGGAGAGGTCTTTTGAAGTCTTCTGAGCTGATGAGTTCTGGATCCTGCAGCAGCAT
 GCTGAACTGGTAATAAATCTCCTAATGGAATAAGCGACTATCCAAAGATCAGAGTGACAGTGACCCGC
 GATCAGCCACGGAGAGTCTGCCCTCTTTGGTTTTACGCTGAAATCGGAAGGCTATAATAGAAGGCCAA
 GTGGTCGTCGCCATAGCAAAAGCAATCCAGAGAGTTCTTAACATGGAAGCCTCAGGAGCAAGGTGTGAC
 AGAGATGATTTCTGAAGAGGGTGGCAAGGGTGTGAGGCGTCCCCACTGCACCGTGGAGGAGGGTGTCCAA
 AAGGATGAAAGAGAAAAGTATCGAAAGTATTGGAGCGACTTAAAGAAGGTGCTCATGGAAGCACGTTC
 CTTCCACGGTTTACACCACAGTTCTCAGAGAATTCAGATGGACACATTAAGACCAAAGGCTGGGTGGA
 GGAGCAGAATCATGGCGTCAGAACAACCCATTTTGTCCAAAACAGTATAGAGTTGTTGAAAACAAGGGA
 CCTCTCTGTTCAATGAGAAGTAAAAGAGGTATCAAAAGGGAAAGCTGATACAGAGAAGGTGGTGGGAC
 TCCGATTTGAAAAGGAAGGTACAAGAGGACACCAATGGAGCCTGATCTGTCAGAAGAAGTGTCTGCCCG
 ACTTCGCTAGGAAGTGAAGCAATGGCTTACTCAGAAGGAAAATACAGTGCTTGAGATAAAGGAAAAG
 AACTTCCGAGCAAAAGAGAAGGACAGAAGAACGGAAGACCTCTTTGAATTTACAGAGGACATGAAAAGG
 AAATCAGTAATGCCCTGGGCCACGGCCACCAGATGAGATTTTGGCAGCGCTTTCAAGTTGCGAATCAC
 CCGCGGAGACATCCAGACCTTAAAGAACTATCATTGGCTCAACGATGAGGTCATTAATTTTTATATGAAT
 CTTTTAGTGAAAAGGAGTAAAAGCAAGGTTATCCAGCACTTTCATGCATTAGTACATTCTTCTATCCTA
 AGCTAAAGTCTGGAGTTACCAAGCAGTAAAAGATGGACCAAAGGGTAAATCTCTTCAACAAGAACT
 TGTTCTGGTACCTATTTCATCGGAAGGTACATTGGAGCCTGGTGGTATGGACCTAAGAAAAAGTGTCTT
 AAATATCTGGATTCTATGGGACAAAAGGCCACAGGATCTGTGAGATTCTTCTCAGTATTTACAGGATG
 AAAGCAAGACAAAAGAAATACAGATCTCAACCTCTTAGAGTGGACCCACTACAGCATGAAGCCACATGA
 GATTCCTCAGCAGTTGAATGGGAGTGACTGTGGAATGTTACTTGTAAATATGCAGATTATTTCTAGG
 GACAAACCTATCACATTCCTCAGCACCAGATGCCTCTTCCGGAAGAAGATGGTGTGGGAGATCCTTC
 ACCAGCAGTTGCTG

ACGCGTACGCGGCCGCTCGAG - GFP Tag - GTTTAA

Protein Sequence:

>MG209170 representing NM_029457
 Red=Cloning site Green=Tags(s)

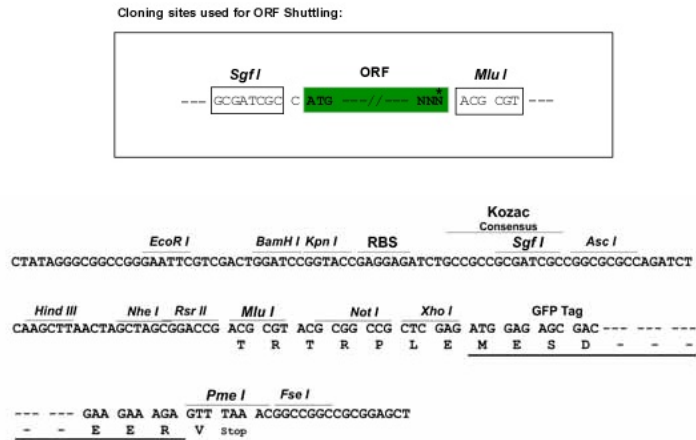
MYRWLAKVLGTLRLCERPAPGARALLKRRSSSTLFSTAVDTDEIPAKRPRLDCFIHQVKNLSLYNAASL
 FGFPFQLTTKPMVSSACNGTRNVAPSGEVFVSNSSSCELMSSGSCSSMLKLGKSPNGISDYPIKIRVTVTR
 DQPRRVLPSFGFTLKSEGYNRRPSGRHRHSKNPESSLTWKPQEQGVTEMISEEKGVRRPHCTVEEGVQ
 KDEREKYRKLLERLKEGAGHSTFPPTVSHHSSQRIQMDTLKTKGWVEEQNHGVRTTHFVPKQYRVVETRG
 PLCSMRSEKRYSGKADTEKVVGLRFEKEGTRGHQMEPDLSEEVSARLRLGSGSNGLLRKISVLEIKEK
 NFPSKEKDRRTEDLFEFTEDMEKEISNALGHGPPDEILSSAFKLRITRQDIQTLKNYHWLNDEVINFYMN
 LLVERSKQGYPALHAFSTFFYPKLSGGYQAVKRWTGKVNLFQELVLPVPIHRKVHWSLVVMDLRKKCL
 KYLDSMGQKGHRIICEILLQYLQDESKTRNTDLNLEWTHYSMKPHEIPQQLNGSDCGMFTCKYADYISR
 DKPITFTQHQMPLFRKKMWEIFHQQLL

TRTRPLE - GFP Tag - V

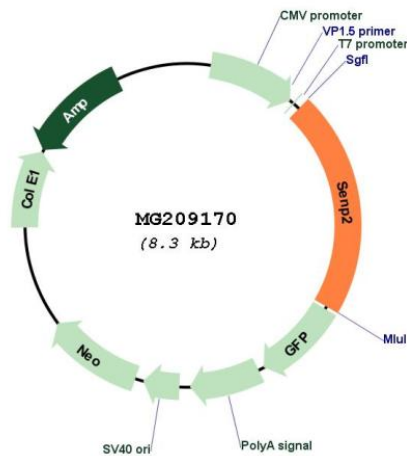
Restriction Sites:

Sgfl-MluI

Cloning Scheme:



Plasmid Map:



ACCN: NM_029457

ORF Size: 1764 bp

OTI Disclaimer:	The molecular sequence of this clone aligns with the gene accession number as a point of reference only. However, individual transcript sequences of the same gene can differ through naturally occurring variations (e.g. polymorphisms), each with its own valid existence. This clone is substantially in agreement with the reference, but a complete review of all prevailing variants is recommended prior to use. More info
OTI Annotation:	This clone was engineered to express the complete ORF with an expression tag. Expression varies depending on the nature of the gene.
Components:	The ORF clone is ion-exchange column purified and shipped in a 2D barcoded Matrix tube containing 10ug of transfection-ready, dried plasmid DNA (reconstitute with 100 ul of water).
Reconstitution Method:	<ol style="list-style-type: none">1. Centrifuge at 5,000xg for 5min.2. Carefully open the tube and add 100ul of sterile water to dissolve the DNA.3. Close the tube and incubate for 10 minutes at room temperature.4. Briefly vortex the tube and then do a quick spin (less than 5000xg) to concentrate the liquid at the bottom.5. Store the suspended plasmid at -20°C. The DNA is stable for at least one year from date of shipping when stored at -20°C.
RefSeq:	NM_029457.3 , NP_083733.1
RefSeq Size:	4499 bp
RefSeq ORF:	1767 bp
Locus ID:	75826
UniProt ID:	Q91ZX6
Cytogenetics:	16 B1
Gene Summary:	Protease that catalyzes two essential functions in the SUMO pathway. The first is the hydrolysis of an alpha-linked peptide bond at the C-terminal end of the small ubiquitin-like modifier (SUMO) propeptides, SUMO1, SUMO2 and SUMO3 leading to the mature form of the proteins. The second is the deconjugation of SUMO1, SUMO2 and SUMO3 from targeted proteins, by cleaving an epsilon-linked peptide bond between the C-terminal glycine of the mature SUMO and the lysine epsilon-amino group of the target protein. May down-regulate CTNNB1 levels and thereby modulate the Wnt pathway. Deconjugates SUMO2 from MTA1 (By similarity). Plays a dynamic role in adipogenesis by desumoylating and promoting the stabilization of CEBPB (PubMed:20194620). Isoform 3 activates transcription. [UniProtKB/Swiss-Prot Function]