

Product datasheet for **MG209162**

Syt3 (NM_016663) Mouse Tagged ORF Clone

Product data:

Product Type:	Expression Plasmids
Product Name:	Syt3 (NM_016663) Mouse Tagged ORF Clone
Tag:	TurboGFP
Symbol:	Syt3
Synonyms:	A1385753; sytIII
Mammalian Cell Selection:	Neomycin
Vector:	pCMV6-AC-GFP (PS100010)
E. coli Selection:	Ampicillin (100 ug/mL)



[View online »](#)

ORF Nucleotide Sequence:

>MG209162 representing NM_016663
 Red=Cloning site Blue=ORF Green=Tags(s)

TTTTGTAATACGACTCACTATAGGGCGGCCGGAATTCGTCGACTGGATCCGGTACCGAGGAGATCTGCC
 GCC**CGGATCGCC**

ATGCTCGGGACTATGAAGATGACCTCTGTGCGGGCGCTCATCTGGTCTCAGACCTCTGTGCACGGG
 TCCGAGATGCTGATACCAATGATAGGTGTCAAGAGTTCAACGAAGTTCGCGATCAGAGGATATCCCCGGG
 TCCGGATGCAGATATTTCCGTGAGCCTGCTGTGAGTATCGTGACATTCTGTGGCATCGTCTCTGGGT
 GTCTCCCTCTTCGTGCTCCTGGAAGTTGTGCTGGGTGCCCTGGAGGGACAAAGGAGGCTCAGCAGTGGGTG
 GTGGCCCCCTGCGCAAAGACTTAGCCCCGGGGTGGGCTGGCAGGCCTGGTAGGAGGTGGTGGCACCA
 CCTAGGAGCCAGCCTCGGTGGTCACTCCCTGCTGGGTGGCCACACCATCATGGGCACACAGCCACCAT
 CCACCATTTGCGGAGCTGCTGGAACCAGGTGGTCTTGGGGCTCTGAGCCGCCAGAACCTTCTACCTGG
 ACATGGACTCATATCCAGAGGCTGCTGTGGCCTCTGTGGTAGCTGCTGGAGTCAAACCAAGCCAGACATC
 CCCTGAGCTGCCTTCTGAGGGTGAACAGGTTCTGGGCTGCTCCTGCTGCCTCCCAGTGGTGGGGCTTA
 CCCAGTGCCAGTCTCATCAGCAGGTACAAGTCTAGCACCCACCACAAGGTACCCAGCCCTGCCTCGGC
 CCCTCACCCAGCAGACCCTGACCACCAAGCAGACCCAAGCACTGAGGAGCGACCGCTGCACTGCCTT
 ACCTCTGCCGGGTGGAGAGGAAAAGCCAAGCTCATCGGTGAGTCAAACCAAGAGCTGTACCAGGGCACT
 GGACCCGGTGGTGGCGAGGGCGGGGCTCAGGGGAAGCAGGGGCACCCTGTGGCCGCATCAGTTTTGCC
 TCCGGTACCTCTATGGTCTGACCATCTCGTGGTGGGATCCTACAGGCCTGGATCTCCAGCAAAGGA
 CTCCAATGGGTTCTCAGACCCCTACGTCAAGATCTACCTGTTGCCTGATCGAAAAAGAAGTCCAGACC
 AAGGTGCACAGGAAGACGTTGAACCCATCTTCAACGAGACGTTTCAAGTCTCGGTGCCCTGGCCGAGC
 TGGCACAGCGCAAGCTGCACTTCAGCGTCTGACTTCGACCGTCTCGCGGCATGATCTCATTGGCCA
 GGTGGTTTTGGACAACCTGCTGGAGCTGGCTGAACAGCCCCCTGACCGCCGCTCTGGAGGGACATCCTG
 GAGGGTGGCTCGAAAAAGCAGATCTCGGAGAGCTCAACTTCTCTCTGCTACCTCCCCACGGCTGGG
 GCCTCACCGTGCACATCAAAAGCCTCTAACCTCAAAGCAATGGACCTCACTGGTTTCTCAGACCCCTA
 TGTGAAGGCTCTCTGATCAGCGAGGGCGGCTGTAAGAAACGGAAGACCTCCATTAAGAAGAACACA
 CTGAACCCACGTACAACGAGGCCCTGGTGTTCGACGTGGCTCCCAGAGCGTGGAGAACGTGGGTCTCA
 GCATCGCAGTGGTAGACTATGACTGCATCGCCACAATGAAGTATCGGGGTGTCCGCGTGGGTCCAGA
 GGCTGCCGACCCACACGGCAGAGAACACTGGGCAGAGATGCTGGTAACCCGCGCAAGCCTGTGAAACAC
 TGGCACCAGCTAGTGGAGGAGAAGACTCTGAGCAGCTTCAAAGGGTGGCAAAGGATTGTCAGAGAAAG
 AGAATTCAGAG

ACGCGTACGCGGCCGCTCGAG - GFP Tag - GTTTAA

Protein Sequence:

>MG209162 representing NM_016663
 Red=Cloning site Green=Tags(s)

MSGDYEDDLRRALILVSDLCARVRDADTNDRCQEFNELRIRGYPRGPDADISVSLLSVIVTFCGIVLLG
 VSLFVSWKLCWVPWRDKGSAVGGGPLRKDLAPGVGLAGLVGGGGHHLGASLGGHPLLGGPHHHGHTAHH
 PPF AEELLEPGGLGGSEPPPEPSYLDMSYPEAAVASVVAAGVKPSQTSPELPSGGTGSGLLLLPPSGGGL
 PSAQSHQQVTS LAPTRYPALPRPLTQQTLTTQADPSTEERPPALPLPLPGGEEKAKLIGQIKPELYQGT
 GPGRRRGGSGEAGAPCGRISFALRYLYGSDHLVVRILQALDLPKDSNGFSDPYVKIYLLPDRKKKFQT
 KVHRKTLNPIFNETFQFSVPLAELAQRKLFVSYDFDRFSRHDLIGQVLDNLLLELAEQPPDRPLWRDIL
 EGGSEKADLGELNFSCLYLPAGRLTVTIKASNLKAMDLTGFSDPYVKASLISEGRRLLKRRKTSIKKNT
 LNPTYNEALVFDVAPESVENVGLSIAVVDYDCIGHNEVIGVCRVGPAAADPHGREHWAEMLANPRKPVHE
 WHQLVEEKTLSSFTKGGKGLSEKENSE

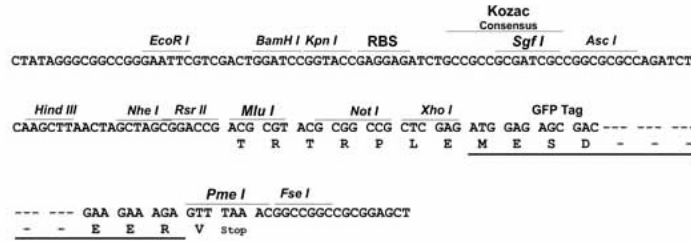
TRTRPLE - GFP Tag - V

Restriction Sites:

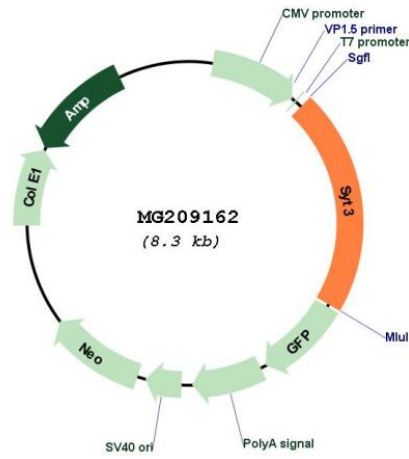
Sgfl-MluI

Cloning Scheme:

Cloning sites used for ORF Shutting:



Plasmid Map:



ACCN: NM_016663

ORF Size: 1761 bp

OTI Disclaimer:	The molecular sequence of this clone aligns with the gene accession number as a point of reference only. However, individual transcript sequences of the same gene can differ through naturally occurring variations (e.g. polymorphisms), each with its own valid existence. This clone is substantially in agreement with the reference, but a complete review of all prevailing variants is recommended prior to use. More info
OTI Annotation:	This clone was engineered to express the complete ORF with an expression tag. Expression varies depending on the nature of the gene.
Components:	The ORF clone is ion-exchange column purified and shipped in a 2D barcoded Matrix tube containing 10ug of transfection-ready, dried plasmid DNA (reconstitute with 100 ul of water).
Reconstitution Method:	<ol style="list-style-type: none">1. Centrifuge at 5,000xg for 5min.2. Carefully open the tube and add 100ul of sterile water to dissolve the DNA.3. Close the tube and incubate for 10 minutes at room temperature.4. Briefly vortex the tube and then do a quick spin (less than 5000xg) to concentrate the liquid at the bottom.5. Store the suspended plasmid at -20°C. The DNA is stable for at least one year from date of shipping when stored at -20°C.
RefSeq:	NM_016663.2 , NP_057872.2
RefSeq Size:	2432 bp
RefSeq ORF:	1764 bp
Locus ID:	20981
UniProt ID:	O35681
Cytogenetics:	7 28.83 cM
Gene Summary:	Ca(2+) sensor involved in Ca(2+)-dependent exocytosis of secretory vesicles through Ca(2+) and phospholipid binding to the C2 domain. Ca(2+) induces binding of the C2-domains to phospholipid membranes and to assembled SNARE-complexes; both actions contribute to triggering exocytosis. Plays a role in dendrite formation by melanocytes.[UniProtKB/Swiss-Prot Function]