

Product datasheet for **MG209153**

Taf1b (NM_020614) Mouse Tagged ORF Clone

Product data:

Product Type:	Expression Plasmids
Product Name:	Taf1b (NM_020614) Mouse Tagged ORF Clone
Tag:	TurboGFP
Symbol:	Taf1b
Synonyms:	4930408G01Rik; A230108M10Rik; p63; TAFI68; Tafi86
Mammalian Cell Selection:	Neomycin
Vector:	pCMV6-AC-GFP (PS100010)
E. coli Selection:	Ampicillin (100 ug/mL)



[View online »](#)

ORF Nucleotide Sequence:

>MG209153 representing NM_020614
 Red=Cloning site Blue=ORF Green=Tags(s)

TTTTGTAATACGACTCACTATAGGGCGGCCGGAATTCGTCGACTGGATCCGGTACCGAGGAGATCTGCC
 GCC**CGGATCGCC**

ATGGATGTGGAGGAGGTGAAAGCGTTCCAGAGACCCTGTTCTCAGTGTGCTGCTGTCTCCTGGGCCTTA
 CCGATGAAGGCAATATTACTGTACTTCCCTGCCACAATGTCACAGATCGATCTGAGGAAGTGGTGAGCGC
 TGCAGATATCCCCAACACCAAGATCAACTCCATCAACAGGGGGCTGAGACAGAGAAGCAAGCATGAGAAA
 GGCTGGGATTGGTATGTGTGTGAAGTTTCCAGTGCATACTTTATCACCAGCAAAAGCCCTGGAGACCC
 TCGGAGTAAGCCAGAACTAAAGAATGAAGTCTTACACAATTTTGAAGCGCTACCTTCAGAAGAGCAA
 ACAGGCCATTGTA AAAACCCAGTTCGTAAGTGAAGTGAAGCAAGTATTAGAAGACAGTGTGCAG
 TCCTCGGACTTGGGCAGTATCTTGAAGTGAAGTGAAGTGAAGTGAAGTGAAGTGAAGTGAAGTGAAGT
 TCCAATCTGACCCTCAGATTCAAAGCCTTCCCTGTACCAAAGGATCCCAAAGTCAAGTGTGTCTG
 CTCTGGCTCTGTTGATGGAGTGGAGTACTCCGAGCGGAAGGAGAAGGGGCTTGTGAAGATGACGGTGCC
 AGGACACTTGCTCTCTGCT
 GGTTTGTGAAGAGGATCATATCCGTACATAAATGCTTTTAAGCTTTTTCCAGAAGAGATGAAAGTGA
 TGGTCGTGACAAAGGCATCTTTGCTATAGAGTCTTGGCCTGACTATGAAGACATCTATAAAAACATGATT
 GAACCTGGCCATATTTTTAGATTTGCCTCGTTCCAGACATAACGGAAGACTGCTACCTCCATCCCAACA
 CCTTGTGTATGAAATACTTACTGGAGGTCAATCTCCCTGATGAAATGCACACTTTAACCTGTCAAGTAGT
 AAAGTTGACTGGAATTGGGAAGTGGATTTTCTGACGTTGATCCTATAGCTAAAACGAAAAGGACAGTT
 AAATATGATGTGCAGGCTATGGCTGTCTTGTGGTTGTGTTGAAGCTGCTGTTTTTGTGGATGACAAGC
 TGGAAATGGTCTTACTCAGATCTTGTGAGCGTACAACGAACAACAGAGAAGACACGCCCCAGTTTGA
 TTTCCAGAAAATGGTACCAAGTTATGAAGAAAACCTTTTGTGAGAAAAGACGAAAATGGGAAGAAGCGAGG
 GCCAGGTATGCTTGGAAAACCAAAGGCCACTCTACCGTTCACACATCGATAAGTCCGTCGCATATAAGA
 GAAGAAAATGGTGGAGAATCTTCAAAAACAATTTAGTGCCTGGTTGGTTCATCACCCGTGGTTGAAAA
 GCAGGCCCTTCAAGTTTTCAGTTCACTGGACTGAAGAAGGCACTGATAGCCCTGTTTCCATGGACAC
 AGCCTCCAGGACTCCTGATAATGAAAGGCCAGTCCATGATAACCAAGAACTCCCTGTATTGGCTCAGTA
 CCCAGAAGTTCTGAAAAGCTATTGTAACATGTGACAACTACGAAGAATCAAATTTTTCTTTGAGTTA
 CCAGTTTATACTAAACATCTTCTCTTCTTACTGAGAATAAAGACCTCTGCTCTCCATGAAGAAGTGAAG
 TTAAGTGAAGAAGAACTTTTTGAAAAAAAATACAACGAATCAAAAAGAGCTCAGGATCCAAGAAAGGAA
 GAAGACAC

ACGCGTACGCGGCCGCTCGAG - GFP Tag - GTTTAA

Protein Sequence:

>MG209153 representing NM_020614
 Red=Cloning site Green=Tags(s)

MDVEEVKAFDRCSQCAAVSWGLTDEGKYYCTSCHNVDRSEEVVSAADIPNTKINSINRGLRQRSKHEK
 GWDWYVCEGFQCILYHQAKALETLGVSPCLKNEVLHNFWKRYLQKSKQAYCKNPVRTSGRKAKVLEDSVQ
 SSDLGSDLELLSDTTCPLESEAEFQSDPQIPKPFVTKGSPKSASVCSGSDGVEYSERKEKGLVKMTVP
 RTLALCSLSLLWQRETITVSDLLRFVEEDHIPYINAFKLFPEEMKVVYGRDKGIFAIESWPDYEDIYKMI
 ELAIFLDLPRFPDITEDCYLHPNTLCMKYLLEVNLPDEMHTLTCQVVKLTGIGEVDLTFDPIAKTKRTV
 KYDVQAMAVIVVVLKLLFLLDDKLEWSYDLAEAYNEQHREDTPQFDFRKWYQVMKKTDFEKRKWEAR
 ARYAWKTKRPLYRSHIDKSVAYKRRKMVENLQKQFSALVGSSPVVEKQAPSSFQFNWTEEGTDSPCFHGH
 SLQGLLIMKGQSMITKNSLYWLSTQKFKSYCKHVTTYEESNLSYQFILNIFSLRIKTSALHEEVS
 LLEKKLFEKYNESKSKSSGSKGRRH

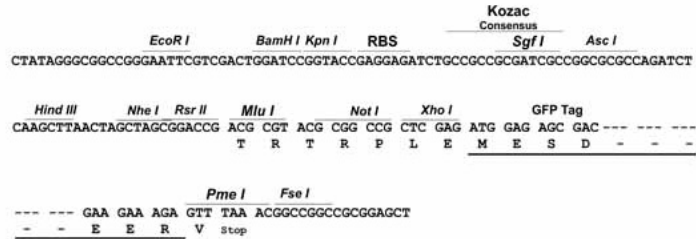
TRTRPLE - GFP Tag - V

Restriction Sites:

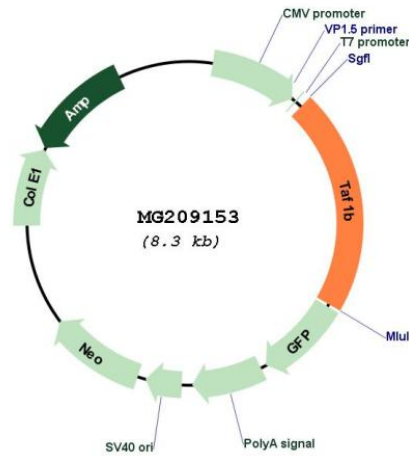
SgfI-MluI

Cloning Scheme:

Cloning sites used for ORF Shutting:



Plasmid Map:



ACCN: NM_020614
 ORF Size: 1758 bp

OTI Disclaimer:	The molecular sequence of this clone aligns with the gene accession number as a point of reference only. However, individual transcript sequences of the same gene can differ through naturally occurring variations (e.g. polymorphisms), each with its own valid existence. This clone is substantially in agreement with the reference, but a complete review of all prevailing variants is recommended prior to use. More info
OTI Annotation:	This clone was engineered to express the complete ORF with an expression tag. Expression varies depending on the nature of the gene.
Components:	The ORF clone is ion-exchange column purified and shipped in a 2D barcoded Matrix tube containing 10ug of transfection-ready, dried plasmid DNA (reconstitute with 100 ul of water).
Reconstitution Method:	<ol style="list-style-type: none">1. Centrifuge at 5,000xg for 5min.2. Carefully open the tube and add 100ul of sterile water to dissolve the DNA.3. Close the tube and incubate for 10 minutes at room temperature.4. Briefly vortex the tube and then do a quick spin (less than 5000xg) to concentrate the liquid at the bottom.5. Store the suspended plasmid at -20°C. The DNA is stable for at least one year from date of shipping when stored at -20°C.
RefSeq:	NM_020614.2 , NP_065639.2
RefSeq Size:	2019 bp
RefSeq ORF:	1761 bp
Locus ID:	21340
UniProt ID:	P97358
Cytogenetics:	12 A1.3
Gene Summary:	Component of RNA polymerase I core factor complex that acts as a GTF2B/TFIIB-like factor and plays a key role in multiple steps during transcription initiation such as pre-initiation complex (PIC) assembly and postpolymerase recruitment events in polymerase I (Pol I) transcription. Binds rDNA promoters and plays a role in Pol I recruitment as a component of the SL1/TIF-IB complex and, possibly, directly through its interaction with RRN3. [UniProtKB/Swiss-Prot Function]