

## Product datasheet for **MG209150**

### Ctps2 (NM\_018737) Mouse Tagged ORF Clone

#### Product data:

Product Type:	Expression Plasmids
Product Name:	Ctps2 (NM_018737) Mouse Tagged ORF Clone
Tag:	TurboGFP
Symbol:	Ctps2
Synonyms:	A830031M15Rik; AI326475; Ctpsh
Mammalian Cell Selection:	Neomycin
Vector:	pCMV6-AC-GFP (PS100010)
E. coli Selection:	Ampicillin (100 ug/mL)



[View online »](#)

**ORF Nucleotide Sequence:**

>MG209150 representing NM\_018737  
 Red=Cloning site Blue=ORF Green=Tags(s)

TTTTGTAATACGACTCACTATAGGGCGGCCGGAATTCGTCGACTGGATCCGGTACCGAGGAGATCTGCC  
 GCC**CGGATCGCC**

ATGAAGTATATCCTGGTTACTGGTGGGGTCATCTCAGGCATTGGTAAAGGGATTATCGCCAGCAGCATTG  
 GGACTATTCTCAAGTCATGTGGACTCCGAGTTACTGCCATCAAAATTGACCCCTATATTAACATCGATGC  
 TGGAACTTTCTCACCTTATGAACATGGTGAAGTATTTGTTTTAAATGATGGTGGAGAAGTTGATTTGGAC  
 CTTGGAACTATGAAAGATTCTTGGACATTAATCTCTATAAAGACAACAACATCACCAGTGGGAAGATAT  
 ATCAGCATGTGATCAACAAGAGAGGGCGCGGTGATTACCTGGGAAAACTGTTCAAGTTGCCCCATAT  
 TACTGATGCTATCCAGGAGTGGTTATGAATCAAGCCAAGGTGTCTGTGGATGGCAATAAGGAAGATCCC  
 CAGATATGTGTTATTGAGCTGGGAGGCACCATTGGAGACATTGAAGGAATGGCATTGTGGAAGCATTCC  
 GACAGTCCAGTTTAAAGCCAAGAAAGAGAATTTCTATAATTCATGTCAGCCTGTGCCACAGCCAG  
 TGCTACTGGAGAACAAAAACCAAGCCACGCAAAACAGTGTCCGTGCGCTGAGAGGGTTGGGCTGTCT  
 CCGGATCTGATCGTCTGCCGTAGTTCAACCCCATTTGAGATGGCTGTGAAGGAGAAGATTTCTATGTTTT  
 GTCACGTGAACCCCTGAACAGGTCATCTGTATCCATGATGTTTTCTCCATCTACCGAGTGCCTCTCCTTTT  
 GGAGGAGCAAGGTGTGGTTAAATATTTTCAAGAGAGATTGGGCCTGCCATCAATGATTGTTCAAGTAAT  
 TTGCTTTTCAAGTGGAAAGCCATGGCTGACAGGTATGAGAGATTGCAGAAAAATAGTTCCATAGCCCTGG  
 TTGGTAAATACACCAAACTCAGGACTGCTACGCCTCTGTGTTCAAAGCACTGGAACACTCAGCCTTGGC  
 CATCAACCACAAGTTGAACTGATGTACATAGACTCCATTGATCTGGAGCCAGTACCAAAGCCGAGGAT  
 CCTGTGAAATCCATGAAGCTTGGCAGAAGCTGTGCTTAGCTGATGGGATTCTTGTGCCCGGAGGGTTTG  
 GAATCCGAGGAACATTGGGAAAACCTCAGGCAATTTCTGTTGGCAAGGACAAAGAAGATTCATTTCTGGG  
 AATTTGCCTTGGGATGCAACTGGCAGTGATTGAGTTTGAAGAACTGCCTGAACCTGAAAGATGCTAAT  
 TCTACAGAATTTGAGCCAAACACTCCAGTCCCATTGGTAATTGACATGCCTGAACACAACCTGGCGATT  
 TGGGAGGAACAATGAGACTGGGGTTAAGACGAAGTGTTCACAACTGAAAACCTCCATACTGAAGAAGCT  
 TTATGGTGACGTTCCCTTACATAGAAGAAAGACACCGACATCGCTATGAGGTGAACCCTAACCTGATCAAC  
 CAATTTGAGAATAAAGACCTTTGTTTTGTCGGTGAGGATGTAGATGGGAAGAGGATGGAAATTTGTTGAGT  
 TGACAAGTCATCCATATTTTCATTTGGTGTCCAGTCCATCCTGAGTTTTCTCTAGGCCAATGAAGCCTTC  
 CCCTCCGTACCTGGGCTCTTACTTGCAGCAACGGGGAATCTGAATGCCATCTGCAGCAGATGAACAAG  
 CTGCCATACAGTGATGGATACAGTGATGCCAGCGATGACAGCTTCCAGAGGCAAAGCTTGCTGAAGTGG  
 ATCTCAAC

**ACGCGT**ACGCGGCCGCTCGAG - GFP Tag - GTTTAA

**Protein Sequence:**

>MG209150 representing NM\_018737  
 Red=Cloning site Green=Tags(s)

MKYILVTGGVISIGIGKGIASSIGTILKSCGLRVTAIKIDPYINIDAGTFSPYEHGEVFLNDGGEVDLD  
 LGNYERFLDINLYKDNITTGKIYQHVINKERRGDYLGKTVQVPHITDAIQEWVMNQAKVSVGDNKEDP  
 QICVIELGGTIGDIEGMAFVEAFRQFQFKAKKENFYNIHVSLVPQPSATGEQKTKPTQNSVRALRGLGLS  
 PDLIVCRSSTPIEMAVKEKISMFCNVNPEQVICIHDVSSIYRVPLLLLEEQGVVYFQERLGLPINDCSSN  
 LLLFKWKAMADRYERLQKICSIALVGKYTKLRDCYASVFKALEHSALAINHKLNLMYIDSIDLEPVTKAED  
 PVKFHEAWQKLCADGILVPGGFGIRGTLGKLQAI SWARTKKIPFLGICLGMQLAVIEFARNCLNLKDNAN  
 STEFEPNTPVPLVIDMPEHNPGDLGGTMRLGLRRTVFTTENSILKLYGDVPYIEERHRHRYEVNPNLIN  
 QFENKDLFCVGEDVDGKMEIVELTSHYPYFVIGVQFHPEFSSRPMKPSPPYLGLLLAATGNLNAHLQQMKN  
 LPYSDGYSDASDDSFPEAKLAELDLN

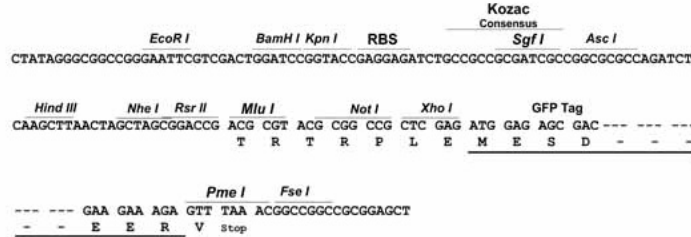
**TRTRPLE** - GFP Tag - V

**Restriction Sites:**

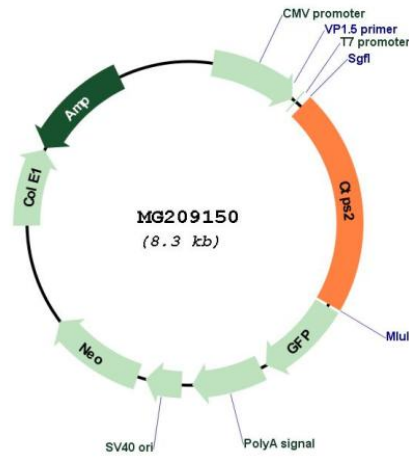
Sgfl-MluI

Cloning Scheme:

Cloning sites used for ORF Shutting:



Plasmid Map:



ACCN: NM\_018737  
 ORF Size: 1758 bp

<b>OTI Disclaimer:</b>	The molecular sequence of this clone aligns with the gene accession number as a point of reference only. However, individual transcript sequences of the same gene can differ through naturally occurring variations (e.g. polymorphisms), each with its own valid existence. This clone is substantially in agreement with the reference, but a complete review of all prevailing variants is recommended prior to use. <a href="#">More info</a>
<b>OTI Annotation:</b>	This clone was engineered to express the complete ORF with an expression tag. Expression varies depending on the nature of the gene.
<b>Components:</b>	The ORF clone is ion-exchange column purified and shipped in a 2D barcoded Matrix tube containing 10ug of transfection-ready, dried plasmid DNA (reconstitute with 100 ul of water).
<b>Reconstitution Method:</b>	<ol style="list-style-type: none"><li>1. Centrifuge at 5,000xg for 5min.</li><li>2. Carefully open the tube and add 100ul of sterile water to dissolve the DNA.</li><li>3. Close the tube and incubate for 10 minutes at room temperature.</li><li>4. Briefly vortex the tube and then do a quick spin (less than 5000xg) to concentrate the liquid at the bottom.</li><li>5. Store the suspended plasmid at -20°C. The DNA is stable for at least one year from date of shipping when stored at -20°C.</li></ol>
<b>RefSeq:</b>	<a href="#">NM_018737.5</a> , <a href="#">NP_061207.1</a>
<b>RefSeq Size:</b>	5606 bp
<b>RefSeq ORF:</b>	1761 bp
<b>Locus ID:</b>	55936
<b>UniProt ID:</b>	<a href="#">P70303</a>
<b>Cytogenetics:</b>	X F4
<b>Gene Summary:</b>	Catalyzes the ATP-dependent amination of UTP to CTP with either L-glutamine or ammonia as the source of nitrogen. Constitutes the rate-limiting enzyme in the synthesis of cytosine nucleotides (By similarity).[UniProtKB/Swiss-Prot Function]