

Product datasheet for **MG209146**

Gad2 (NM_008078) Mouse Tagged ORF Clone

Product data:

Product Type:	Expression Plasmids
Product Name:	Gad2 (NM_008078) Mouse Tagged ORF Clone
Tag:	TurboGFP
Symbol:	Gad2
Synonyms:	6330404F12Rik; GAD(65); Gad-2; GAD65
Mammalian Cell Selection:	Neomycin
Vector:	pCMV6-AC-GFP (PS100010)
E. coli Selection:	Ampicillin (100 ug/mL)



[View online »](#)

ORF Nucleotide Sequence:

>MG209146 representing NM_008078
 Red=Cloning site Blue=ORF Green=Tags(s)

TTTTGTAATACGACTCACTATAGGGCGGCCGGGAATTCGTCGACTGGATCCGGTACCGAGGAGATCTGCC
 GCC**CGGATCGCC**

ATGGCGTCTCCTGGCTCCGGCTTTTGGTCTTCGGATCTGAAGATGGCTCTGCGGATCTGAGAACCCGG
 GCACAGCGAGAGCGTGGTGCCAGGTGGCCAAAAGTTCACGGGCGGCATCGGAAAACAGCTGTGCGCTCT
 GCTCTATGGAGACTCCGGGAAGCCAGCGGAGGGCGGGAGCGTGACCTCGCGGCCGCCACCGGGAAG
 GTCGCCTGCACCTGCGACCAAAAACCTGCAACTGCCCAAAGGGGATGTCAACTACGCGTTTCTGCACG
 CAACAGACCTGCTGCCAGCGTGTGATGGAGAAAGGCCACTCTGGCATTCTACAAGATGTTATGAACAT
 TTTGCTTCAGTACGTGGTAAAAGTTTCGATAGATCAACTAAAGTGATCGATTTCCATTACCCCAATGAG
 CTTCTTCAAGAGTATAATTGGGAATTGGCAGACCAACCGCAAAATCTGGAGGAAATTTTGACGCATTGCC
 AAACAACCTAAAATATGCAATTAACAGGGCATCCCCGATATTTAATCAGCTGTCTACTGGATTGGA
 TATGGTTGGATTAGCAGCAGACTGGTTGACATCAACAGCAAACACTAACATGTTACCTATGAGATCGCC
 CCTGTATTTGTGCTGCTAGAATATGTTACACTAAAGAAAATGAGAGAAATCATTGGCTGGCCCGGGGCT
 CTGGCGATGGAATCTTTTCTCCTGGTGGCGCCATCTCCAACATGTATGCCATGCTCATTGCCCGCTATAA
 GATGTTTTCCAGAAGTCAAGGAGAAGGGGATGGCAGCAGTCCCGAGGCTCATCGCGTTCACATCAGAGCAT
 AGTCACTTTTCTCTCAAGAAGGGAGCTGCAGCCTTAGGGATTGGAACAGACAGTGTGATTCTGATTAAT
 GTGACGAGAGAGGGAAAATGATTCATCTGATCTTGAAGAAGAATCCTTGAAGTCAAACAGAAAGGATT
 TGTTCCCTTCTGGTGAAGTGCACAGCTGGAACACCGTGTATGGGGCTTTTGATCCCTCTTGGCTGTA
 GCTGACATCTGCAAAAAGTATAAGATCTGGATGCACGTGGATGCTGCTGGGGTGGAGGGTTACTGATGT
 CCCGAAACACAAGTGGAAAGCTGAGTGGAGTAGAGAGGGCAACTCTGTGACATGGAATCCTCACAAGAT
 GATGGGTGTCCTTGCAGTGTTCAGTCTCCTGGTTAGAGAGGAGGGACTGATGCAGAGCTGCAACCAG
 ATGCATGCTTCTACCTCTTTCAGCAAGATAAGCACTATGACCTGTCTATGACACAGGAGACAAGGCC
 TGCAGTGTGGACGCCATGTGGATGTCTTAAATATGGCTCATGTGGAGAGCAAAGGGGACTACTGGGTT
 TGAGGCACACATTGATAAGTGTGGAGCTAGCAGAGTATTTATACACTATCATAAAAAACCGAGAAGGC
 TATGAAATGGTGTGATGGGAAGCCTCAACACACAAATGTCTGCTTCTGGTTGTACCTCTAGTTTGC
 GCACTCTGGAAGACAATGAAGAGAGAATGAGCCGCTCTCAAAGGTGGCGCCAGTGATTAAGCCAGAAT
 GATGGAGTATGGGACCACAATGGTCAGTACCAACCTTAGGGGACAAGGTCAACTTCTCCGCATGGTC
 ATCTCAAACCTGCAGCAACTACCAAGACATTGACTTCTTATTGAAGAAATCGAACGCTCGGACAAG
 ATTTG

AG**CGGACCG**ACGCGTACGCGGCCGCTCGAG - GFP Tag - GTTTAA

Protein Sequence:

>MG209146 representing NM_008078
 Red=Cloning site Green=Tags(s)

MASPGSGFWSFGSEDGSADPENPGTARAWCQVAQKFTGGIGNKLCALLYGDSGKPAEGGGSVTSRAATGK
 VACTCDQKPCNCPKGDVNYAFLHATDLLPACDGERPTLAFQDVMNILLQYVVKSFDRSTKVIDFHYPNE
 LLQEYNWELADQPQNLEEILTHCQTTLKYAIKTHGHPRYFNQLSTGLDMVGLAADWLTSTANTNMFTYEIA
 PVFVLLLEYVTLKKMREIIGWPGGSGDGFSPGGAISNMYAMLIARYKMFPEVKEKGMMAVPRLIAFTSEH
 SHFSLKKGAAALGIGTDSVILIKCDERGMIPSDLERRILEVKQKGFVPLVSATAGTTVYGAFDPLLAV
 ADICCKYKIWMHVDAAWGGLLMSRKHKWLKSGVERANSVTWNPHKMMGVPLQCSALLVREEGLMQSCNQ
 MHASYLFQQDKHYDLSDYTDGKALQCGRHVDVFKLWLMWRAKGTTFEAHIDKCLELAEYLYTIKKNREG
 YEMVFDGKPKHTNVCFWFVPPSLRRTLEDNEERMSRLSKVAPVIKARMEYGTMMVSYQPLGDKVNFVFRM
 YISNPAATHQDIDFLIEEIERLGQDL

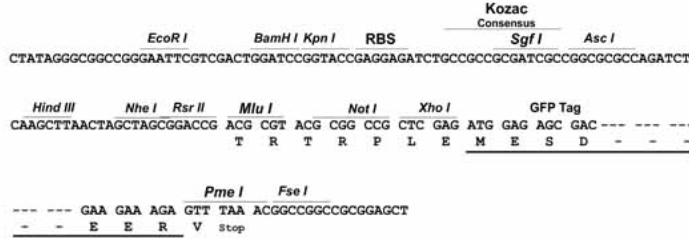
SGP**TRRRLE** - GFP Tag - V

Restriction Sites:

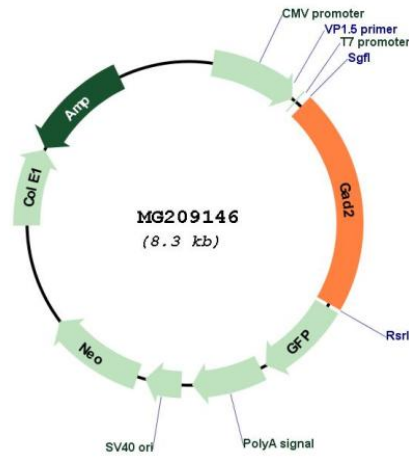
Sgfl-RsrII

Cloning Scheme:

Cloning sites used for ORF Shuttling:



Plasmid Map:



ACCN: NM_008078
 ORF Size: 1755 bp

OTI Disclaimer:	The molecular sequence of this clone aligns with the gene accession number as a point of reference only. However, individual transcript sequences of the same gene can differ through naturally occurring variations (e.g. polymorphisms), each with its own valid existence. This clone is substantially in agreement with the reference, but a complete review of all prevailing variants is recommended prior to use. More info
OTI Annotation:	This clone was engineered to express the complete ORF with an expression tag. Expression varies depending on the nature of the gene.
Components:	The ORF clone is ion-exchange column purified and shipped in a 2D barcoded Matrix tube containing 10ug of transfection-ready, dried plasmid DNA (reconstitute with 100 ul of water).
Reconstitution Method:	<ol style="list-style-type: none">1. Centrifuge at 5,000xg for 5min.2. Carefully open the tube and add 100ul of sterile water to dissolve the DNA.3. Close the tube and incubate for 10 minutes at room temperature.4. Briefly vortex the tube and then do a quick spin (less than 5000xg) to concentrate the liquid at the bottom.5. Store the suspended plasmid at -20°C. The DNA is stable for at least one year from date of shipping when stored at -20°C.
RefSeq:	NM_008078.2 , NP_032104.2
RefSeq Size:	5625 bp
RefSeq ORF:	1758 bp
Locus ID:	14417
UniProt ID:	P48320
Cytogenetics:	2 15.15 cM
Gene Summary:	Catalyzes the production of GABA.[UniProtKB/Swiss-Prot Function]